

M2D5: Assessing re-tuned system

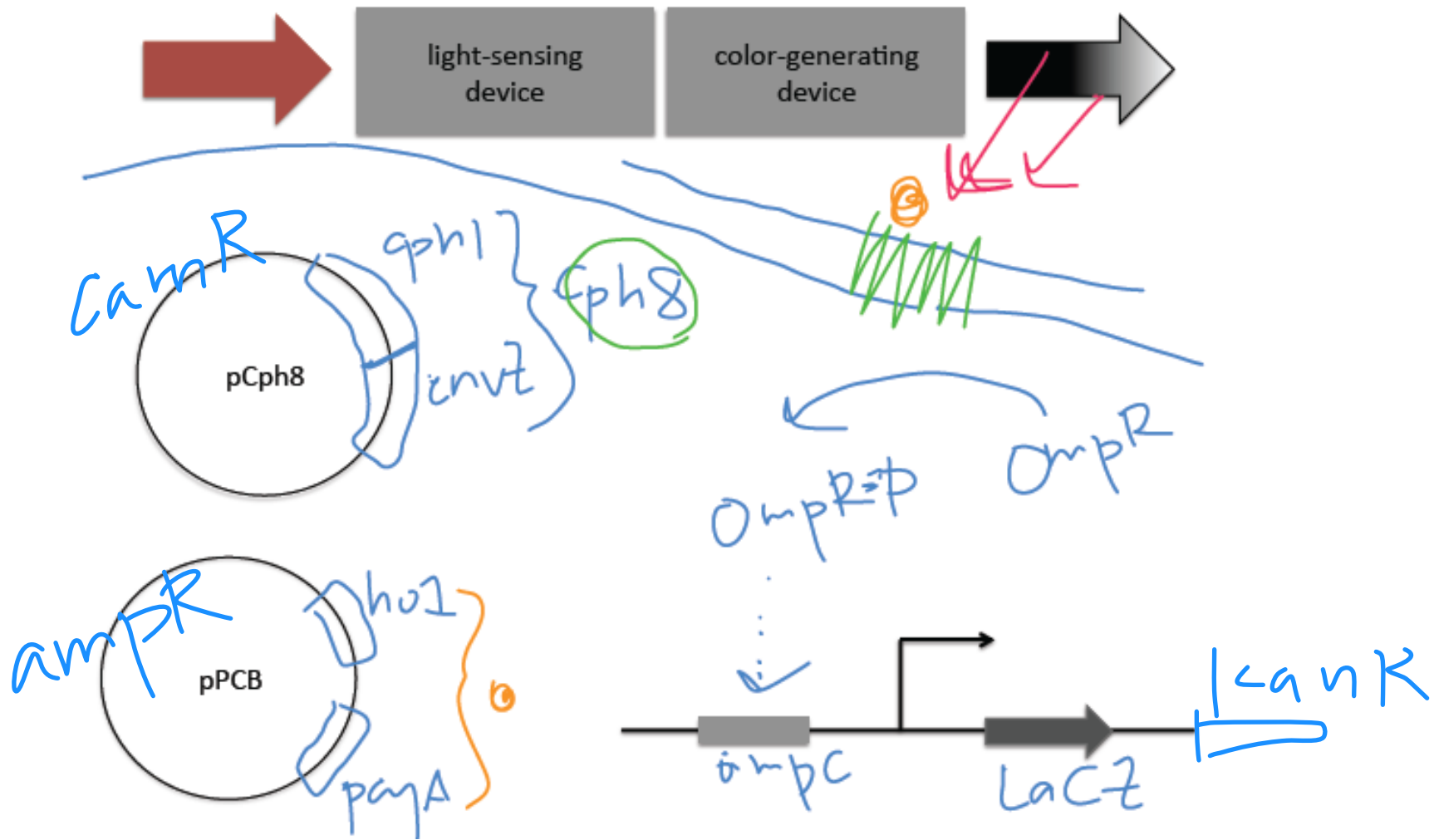
10/23/14

Lab business

October 30

- For next week...
 - Calculate length of Cph8
 - Draft of Materials and Methods for Mod 2 report
- Reserve your article for M2D7 Journal Club
 - Upload slides to Stellar (.ppt)
 - Presentations will start at 11a in 6-104
 - Lunch will be provided
- Thank you again to our presenters and to the audience!

Bacterial photography system details

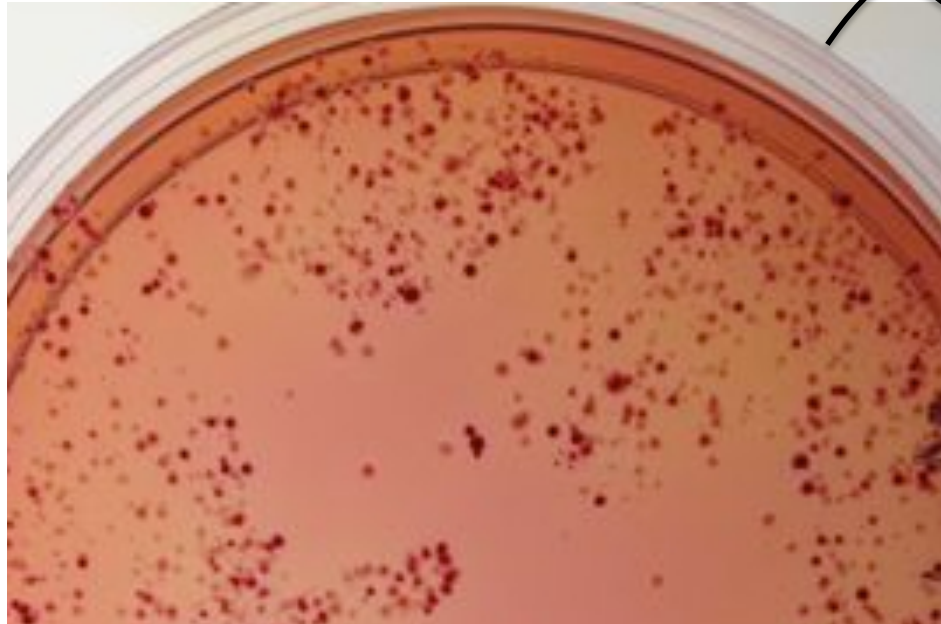
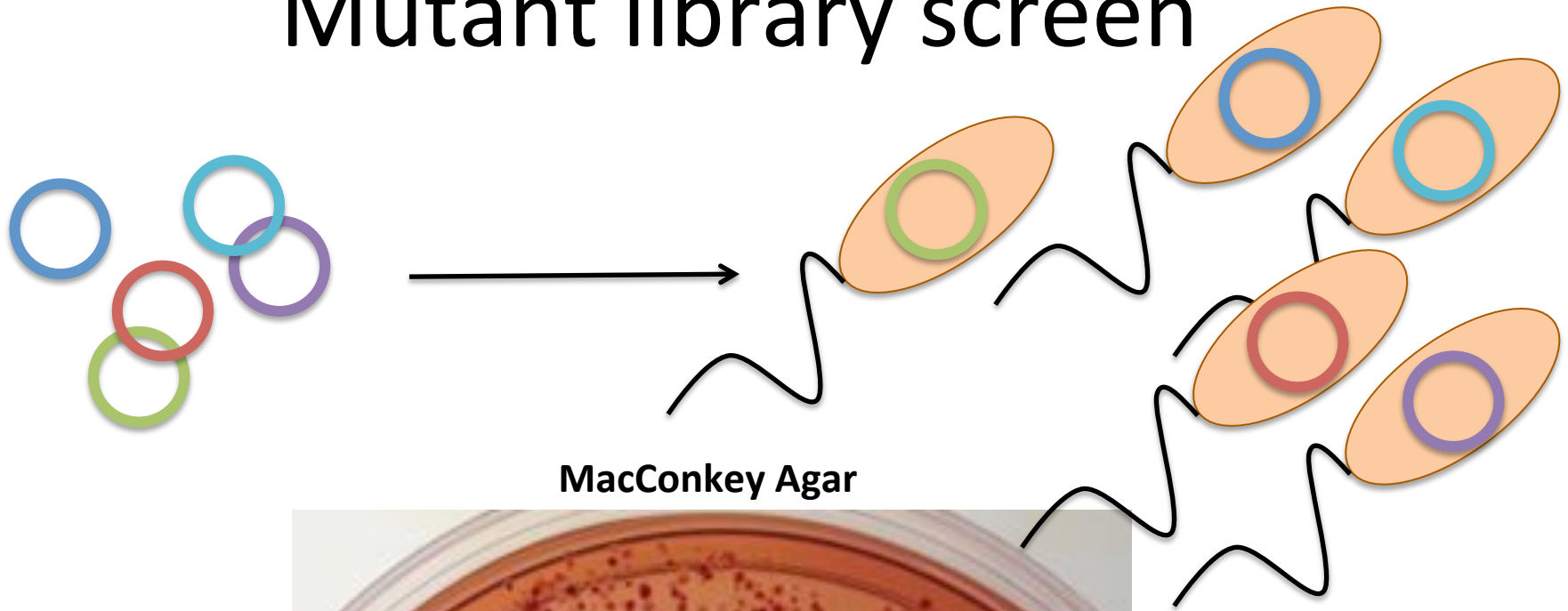


Mutant library construction

EnvZ	H243	D244	L245	R246	T247R (K+P-)	P248
wt seq	CAC	GAC	TTG	CGC	Thr = ACG	CCG
Cph8	H537	D538	L539	R540	T541	P542
	Kinase Dead mutant				NNY mutagenesis	
	GCC = Ala				CTY = Leu	
					CCY = Pro	
					CAY = His	
					CGY = Arg*	
					TTY = Phe	
					TCY = Ser	
					TAY = Tyr	
					TGY = Cys	
					ATY = Ile	
					ACY = Thr	
					AAY = Asn	
					AGY = Ser	again
					GTY = Val	
					GCY = Ala	
					GAY = Asp	
					GGY = Gly	
					N = G A T C	
					Y = C T	
					15 possible amino acids	
					No stops	

	U	C	A	G	
U	Phe	Ser	Tyr	Cys	U
	Phe	Ser	Tyr	Cys	C
	Leu	Ser	STOP	STOP	A
	Leu	Ser	STOP	Trp	G
C	Leu	Pro	His	Arg	U
	Leu	Pro	His	Arg	C
	Leu	Pro	Gln	Arg	A
	Leu	Pro	Gln	Arg	G
A	Ile	Thr	Asn	Ser	U
	Ile	Thr	Asn	Ser	C
	Ile	Thr	Lys	Arg	A
	Met	Thr	Lys	Arg	G
G	Val	Ala	Asp	Gly	U
	Val	Ala	Asp	Gly	C
	Val	Ala	Glu	Gly	A
	Val	Ala	Glu	Gly	G

Mutant library screen



Assessing Cph8 mutants

- How can we identify the Cph8 mutation?
- How do we know that mutation is altering activity and not protein production?

Today

1. Prepare mutant plasmids for sequencing
2. Complete β -galactosidase assay using:
 - Your Cph8 mutants (grown in light and dark)
 - NB466 (grown in light and dark)
 - Kinase dead H537 mutant (grown in light and dark)
3. Inoculate for protein analysis
4. Visit from the writing faculty at 4p

