

# Cholinergic modulation of GABA<sub>A</sub> receptor mediated inhibition in neocortex

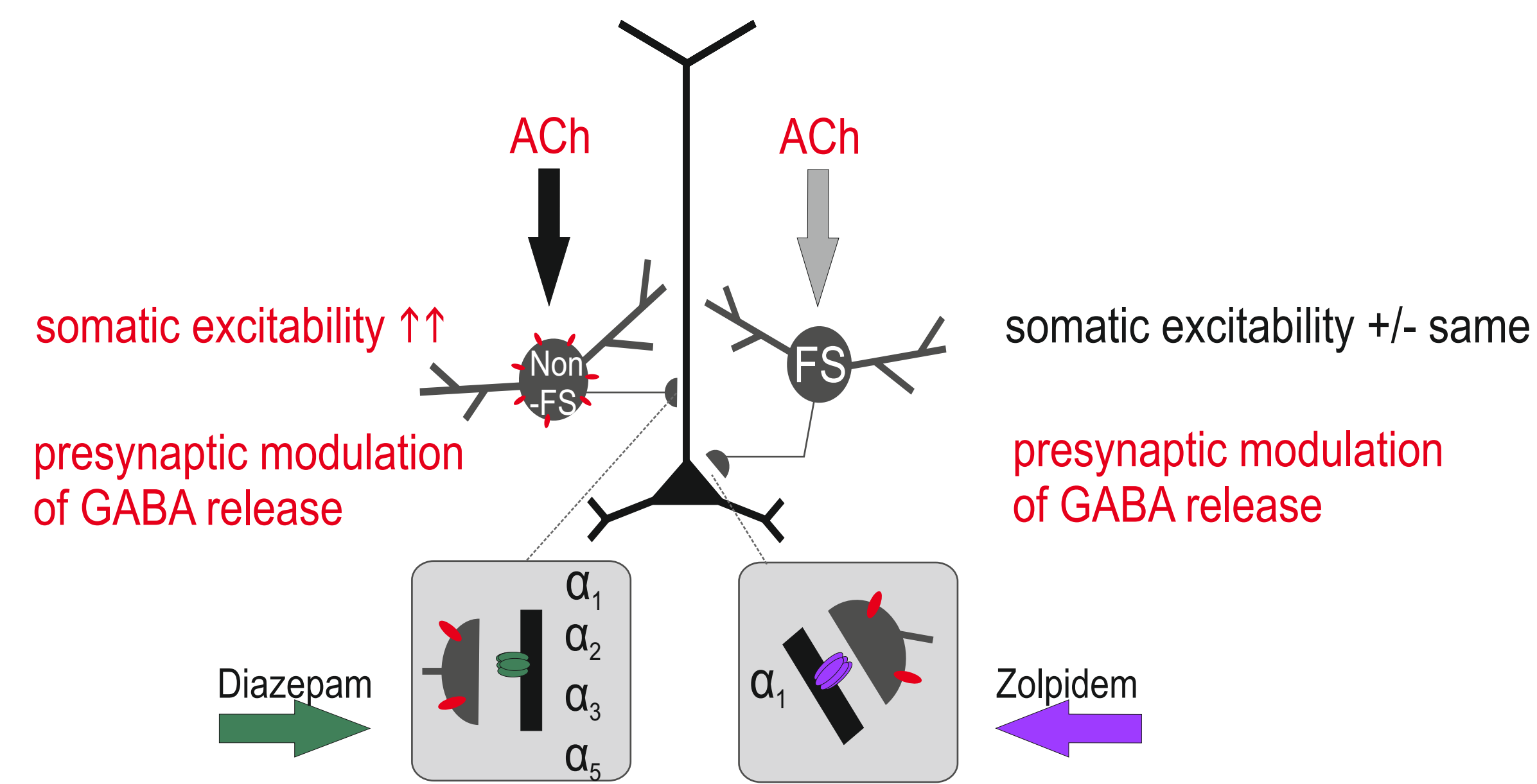
Luise Liebig<sup>1</sup>, Uwe Rudolph<sup>2</sup>, Bernd Antkowiak<sup>1</sup>, Harald Hentschke<sup>1</sup>

<sup>1</sup> University Hospital Tübingen, Department of Anaesthesiology and Intensive Care, Section of Experimental Anaesthesiology, Tübingen, Germany

<sup>2</sup> McLean Hospital, Genetic Neuropharmacology Laboratory, Belmont, Ma, USA



## Central Hypothesis



Acetylcholine (ACh) has differential effects on GABAergic inhibition:

- somatic excitation of some non-fast-spiking interneuron types
- presynaptic modulation of GABA release (decrease: muscarinic, increase: nicotinic)

Our central hypothesis states that **cholinergic activation of neocortex should change the quality of GABAergic inhibition by altering the relative contribution of the diverse GABA<sub>A</sub> receptor subtypes to net inhibition**

## Aim

Quantification of cholinergic effects on

- inhibitory postsynaptic currents in neocortical neurons
- the efficacy and activity-shaping influence of GABA<sub>A</sub> receptor modulators (diazepam, zolpidem) differing in their GABA<sub>A</sub> receptor subtype selectivity

## Conclusion

### Cholinergic status

- ACh modulates spontaneous activity in cortical networks in vitro in multiple ways:
  - increase of intracortical IPSC frequency -> overall increase of interneuronal excitability
  - depression of LFP peak amplitudes
  - increase of up-state frequency

### Interaction: GABA<sub>A</sub>R modulators x cholinergic status

- enhancement of GABAergic currents leads to depression of AP activity during up-states
- impact of GABA<sub>A</sub>R modulators on some aspects of activity depends on the cholinergic status
- this relationship is at least in part mediated by the α<sub>1</sub> subunit

### Conclusion: the cholinergic status impacts GABAergic inhibition in neocortex

-> cholinergic activation weakens inhibition via GABA<sub>A</sub> receptors with α<sub>2</sub>, α<sub>3</sub> or α<sub>5</sub> subunits, but less so via GABA<sub>A</sub> receptors with the α<sub>1</sub> subunit

-> we speculate that ACh may strongly suppress IPSCs of dendrite-targeting interneurons mediated by GABA<sub>A</sub> receptors with α<sub>2</sub>, α<sub>3</sub> or α<sub>5</sub> subunits

## Acknowledgements

Thanks to the Section of Experimental Anaesthesiology, Tübingen for technical support.

Supported by DFG (HE 6210/1-1)

## Methods

### Electrophysiology

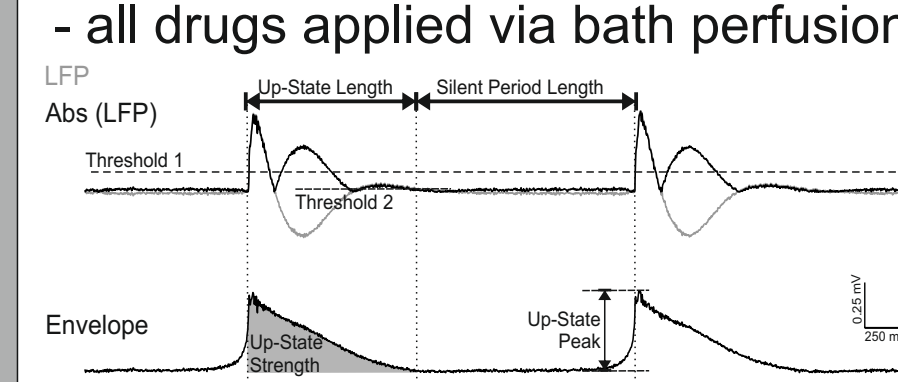
- organotypic cultures of mouse somatosensory cortex from wild type mice and α<sub>1</sub>(H101R) mice (GABA<sub>A</sub> receptors containing the α<sub>1</sub> subunit in the latter are insensitive to benzodiazepines; Rudolph et al Nature 401:796-800, 1999)

- all recordings performed at 34°C

- whole cell voltage clamp recordings were performed with glutamatergic receptors blocked; amplitudes, decay times, median charge per IPSC and charge/time carried by IPSCs were assessed

- in spontaneously active networks (glutamatergic signalling intact), phases of activity (up states) were determined from local field potentials (LFP); peri-event time histograms (PETH) of action potentials (AP) were constructed around the beginning of up-states

- all drugs applied via bath perfusion



### Drug conditions

1) Modulation of cholinergic tonus  
**ACh+**: acetylcholine (1μM) & neostigmine (1μM)  
**ACh-**: atropine (1μM) and mecamylamine (3μM)

2) GABA<sub>A</sub> receptor 'modulation profile'  
 diazepam in wild type: GABA<sub>A</sub>R containing α<sub>1,3</sub> & α<sub>5</sub> subunits  
 diazepam in α<sub>1</sub>(H101R): GABA<sub>A</sub>R containing α<sub>2,3</sub> & α<sub>5</sub> subunits  
 zolpidem in wild type: GABA<sub>A</sub>R containing α<sub>1</sub> subunits

	ACh+	ACh-
diazepam wild type	α <sub>1235</sub>	α <sub>1235</sub>
diazepam α <sub>1</sub> (H101R)	α <sub>235</sub>	α <sub>235</sub>
zolpidem wild type	α <sub>1</sub>	α <sub>1</sub>

### Statistical analysis

We used two classes of measures of effect size (MES), including 95% confidence intervals (CI), as primary statistics:

### Standardized mean differences

- *Hedges' g* (two samples): mean difference divided by pooled standard deviation (see illustration below)

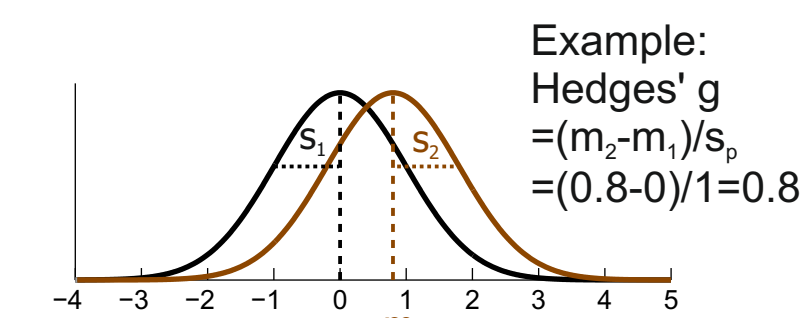
- *M<sub>d</sub>/S<sub>d</sub>* (two samples): mean difference divided by std of difference score

- *g<sub>ψ</sub>* (>2 samples & contrasts): standardized mean difference of a contrast

### Correlational measure

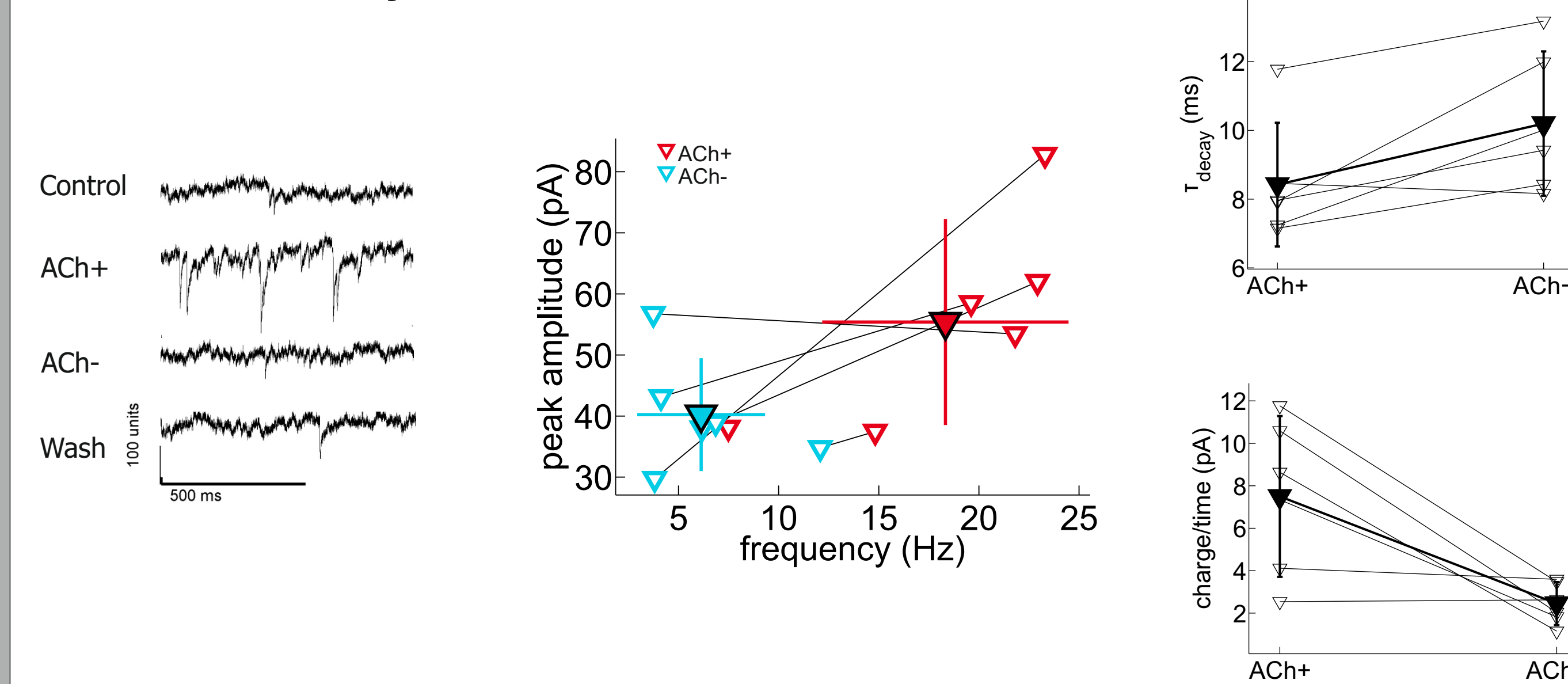
- *partial eta squared* (η<sub>p</sub><sup>2</sup>): proportion of variance due to effect (after removal of all non-effect sources of variability), range 0 (no effect) to 1.

For more detailed information on effect size statistics see Hentschke & Stüttgen, Eur. J. Neurosci. (in press) and the 'Measures of effect size toolbox' at <http://www.mathworks.com/matlabcentral/fileexchange/32398-measures-of-effect-size-toolbox>

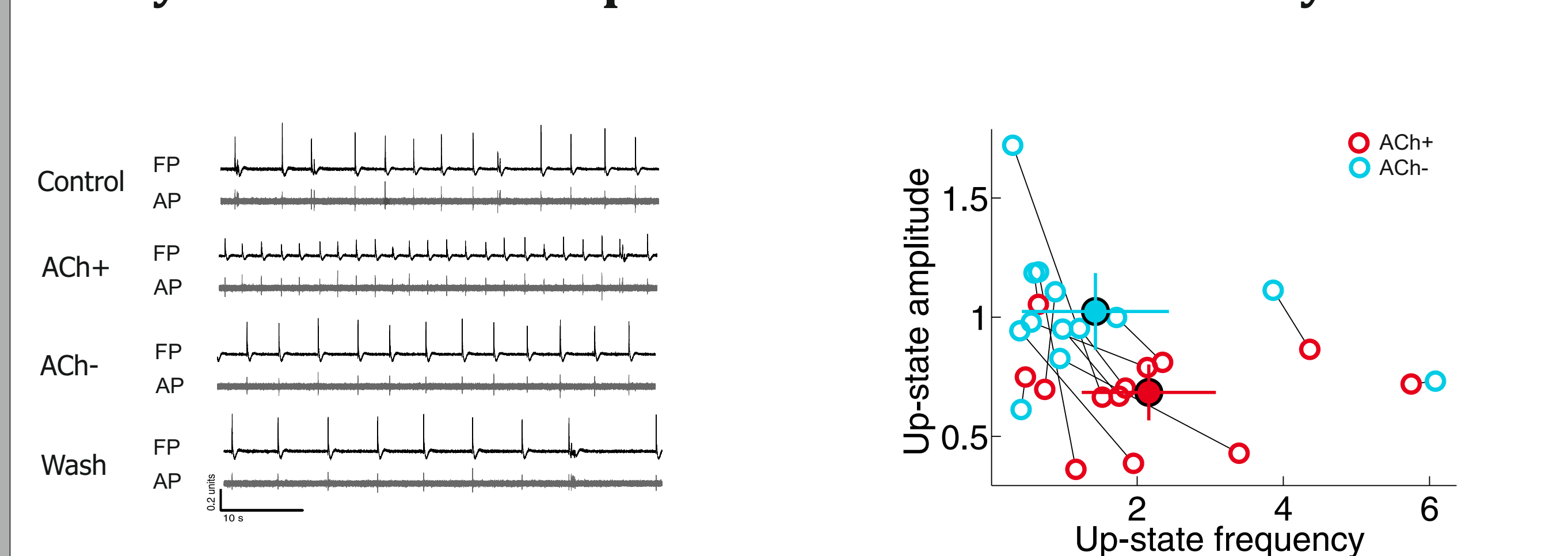


## Results

### Effects of acetylcholine on IPSCs

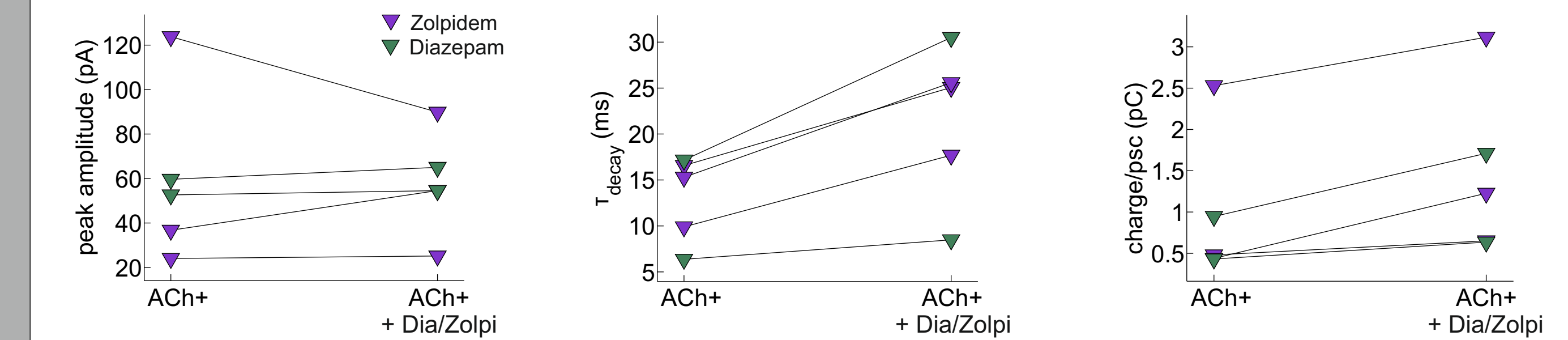


### Acetylcholine affects spontaneous network activity

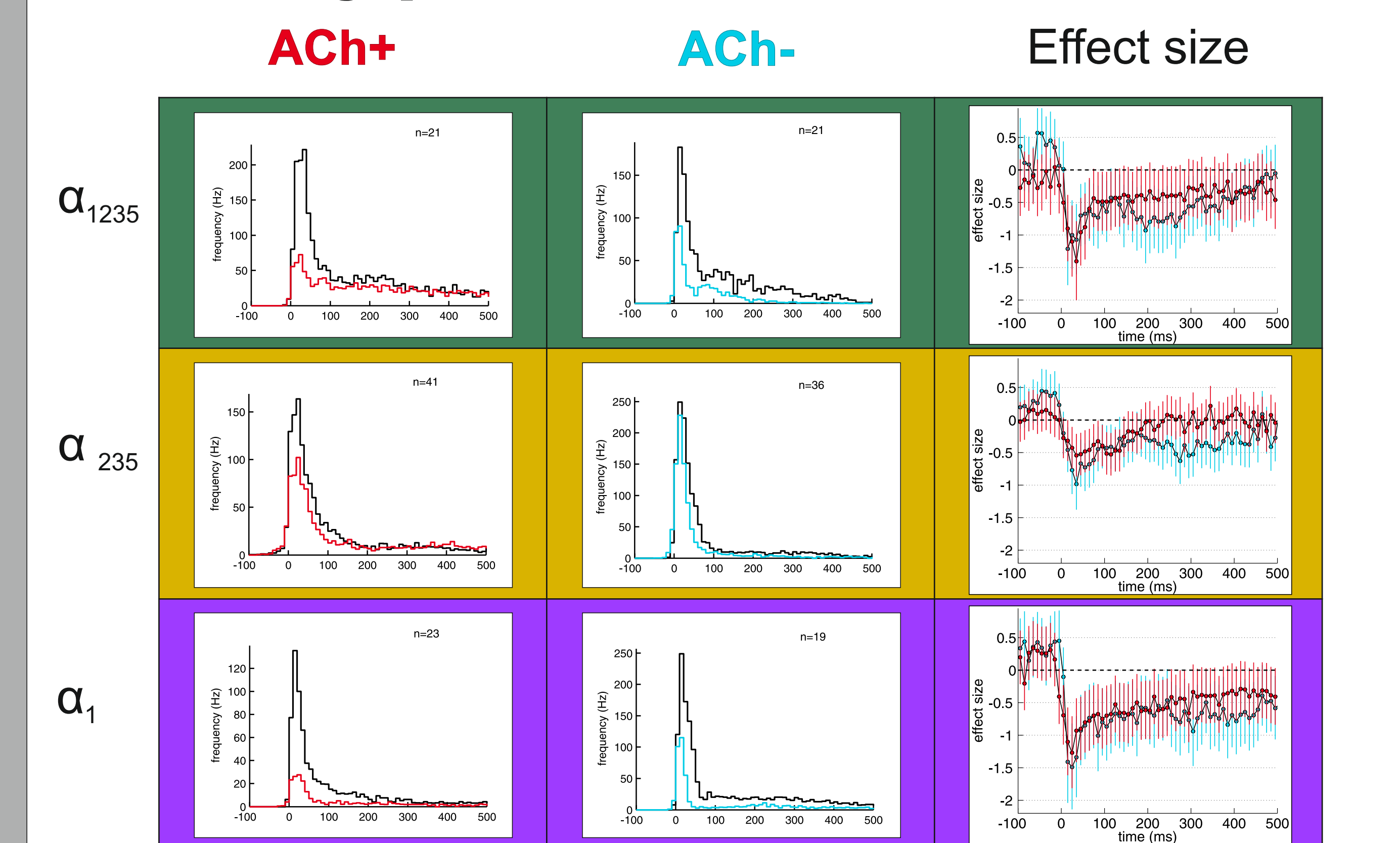


## Results

### Increase of GABAergic currents by GABA<sub>A</sub>-receptor modulators



### Acetylcholine diminishes the impact of GABA<sub>A</sub>R modulators on APs during up-states



### Interaction of the cholinergic status with the effects of GABA<sub>A</sub>R modulators

