

Inferring Adaptive Landscapes from Phylogenetic Trees: A Dissertation Proposal

Carl Boettiger^{a,*}

^aCenter for Population Biology, University of California, Davis, United States

Abstract

Phylogenetically based comparative methods are an established and rapidly expanding area of research in macroevolution. Existing approaches may produce misleading results when the traits under consideration reflect different niche specialization across the taxa in question. I propose a method that addresses these difficulties and extends our ability to ask new questions using phylogenetic comparative data, such as the inferring number of niches represented in the data and rate of evolutionary transitions between niches.

Keywords: Evolution, Phylogenetics, Comparative Methods

1. Multiple niches can confound existing methods

Imagine we have identified a continuously valued phenotypic trait which seems to play an important role in determining the niches of species across some array of taxa. We seek to explain the diversity across these taxa through an adaptive radiation facilitated by adaptation in this functional trait. For instance, island Anolis lizards are thought to differ in hind limb sizes and consequently select different size perches – dividing them into different classes or ecomorphs that has been observed repeatedly in different islands (Williams, 1969). To characterize the radiation, we may wish to reconstruct ancestral states of the phenotype of this trait, estimate the rate of diversification in this trait, and explore how the diversification rate may differ between clades or have changed over time. To address these questions, we must consider both the constraints of evolutionary history as well as adaptation (Losos, 1996). Using DNA sequence data, we can construct an ultrametric phylogenetic tree showing the evolutionary connections between each of his lizard species, as in Fig. 1. Then we approach these questions using the tools of phylogenetic comparative methods.

Ancestral state reconstruction methods for continuous traits (Martins and Hansen, 1997; Schluter et al., 1997) are all essentially based on the Brownian motion (BM) model of character trait evolution Felsenstein (1985), though in principle could be carried out with the Ornstein-Uhlenbeck (OU) model described by Hansen (1997). Using these methods on this data, one will always infer intermediate states such as seen in Fig. 1(a). This raises some cause for concern as the predicted values have little overlap with the values observed in the present day, Fig. 1(b). This difficulty arises whenever the observed taxa represent two distinct ranges in the continuous trait, as may be expected if the trait is responsible for niche differentiation. While such limitations have been identified, (*e.g.* Losos (1999) or Cunningham (1998)), it remains challenging to account for niche differences with existing methods.

Estimates of diversification rate are similarly challenged by this data. The actual estimations are straight-forward: For a unit-length tree shown in Fig. 1(a) under BM, the maximum likelihood estimate for the diversification rate is $\sigma = 9.4$, while under an OU model the diversification rate is estimated at $\sigma = 41$ while the stabilizing selection strength $\alpha = 42$, centered on a trait value of $\theta = 7.3$. The OU model does slightly better in model comparison measures, *i.e.* an AIC of 58 for OU vs 64 under

*Corresponding author.
Preprint submitted to Elsevier on June 6, 2010
Email address: cboettiger@ucdavis.edu (Carl Boettiger)

34 BM. This analysis prefers a model with an adaptive peak located in the middle of the valley between
 35 the two modes of the data, resembling the same pattern as in Fig. 1(b). The stabilizing selection is
 36 centered at the intermediate value $\theta = 7.3$ with an equilibrium width of $\sqrt{\frac{\sigma^2}{2\alpha}} = 4.4$, approximately
 37 the same as the width of either mode. Once again, the apparent multiple niche structure of the data
 38 seems at odds with existing approaches.

39 A proposed signature of adaptive radiations is a decelerating rate of character evolution (Gavrilets
 40 and Vose, 2005; Gavrilets and Losos, 2009), which comparative methods approaches may attempt to
 41 measure through standardized contrasts (Freckleton and Harvey, 2006). Standardized contrasts are
 42 constructed by differences between ancestral and descendant states weighted by the time separating
 43 them. Applying this to the data in Fig. 1(a), we appear to see a clear signal of *accelerating* rates of
 44 evolution, where most trait change occurs in a burst of evolution at the tips. Clearly this could just be
 45 an artifact of the model due to the ancestral state estimates.

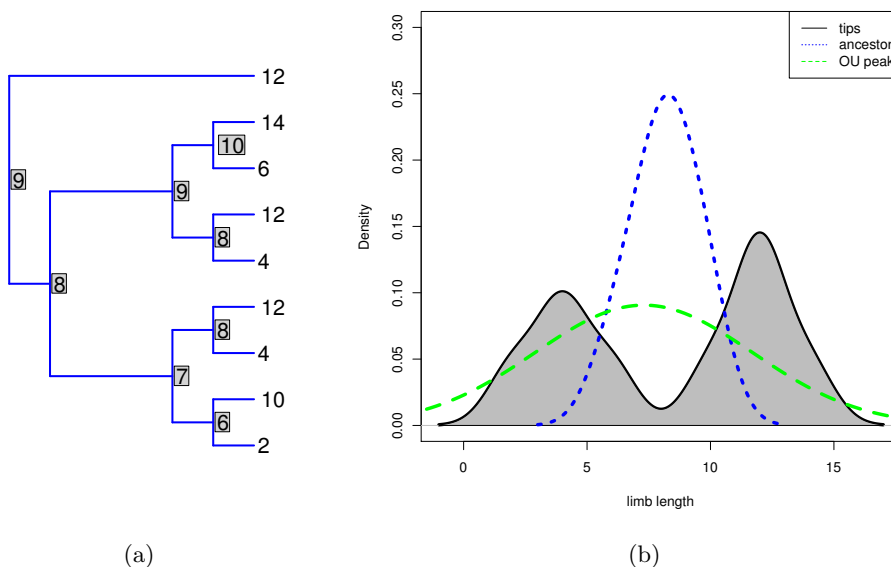


Figure 1: (a) Hypothetical *Anolis* hind limb lengths on a phylogenetic tree. Ancestral states inferred under Felsenstein’s Brownian motion model of evolution are shown at the interior nodes. (b) Distribution of observed limb lengths at tips compared to the inferred ancestral states

46 The challenges introduced by phylogenies that span traits sampled from different niches requires a
 47 new approach to accurately account for the importance of phylogenetic relationships in using compar-
 48 ative data. In this, we follow an emerging pattern in the field of comparative methods. (1) Felsenstein
 49 (1985) first introduced BM as a model of trait evolution to enable existing applications of compar-
 50 ative methods, usually correlations between two traits or trait and environment, to account for the
 51 biological reality of phylogenetic relatedness. This approach was quickly adapted to answer novel ques-
 52 tions such as estimating rates of diversification (Garland, 1992) and comparing these rates between
 53 clades (O’Meara et al., 2006; Collar et al., 2005). While the BM model provided a reasonable de-
 54 scription of diversification, it could not capture the biological reality of stabilizing selection, and could
 55 consequently give spurious results when applied to traits that were strongly conserved over a phylogeny.
 56 (2) To address this, Hansen (1997) introduced the OU model as a description of adaptive trait evolution
 57 under stabilizing selection, which in turn introduced a new class of questions – identifying the strength

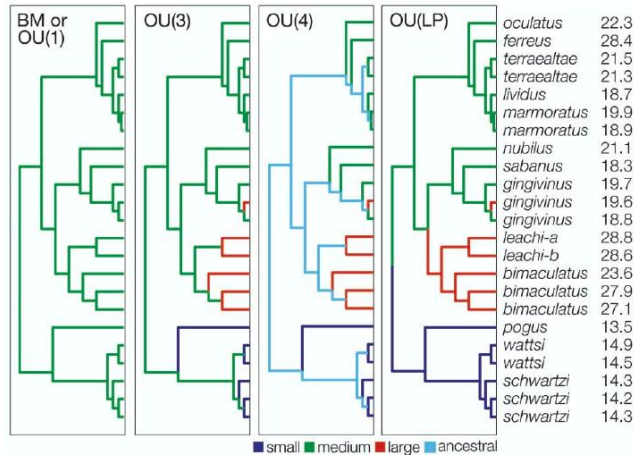


Figure 2: Possible paintings of a phylogenetic tree, taken from [Butler and King \(2004\)](#).

58 of selection and comparing model fits between OU and BM models. The existence of multiple niches
 59 continues this evolutionary cycle. To accurately apply these existing methods on such data, we need
 60 an approach that can capture multiple niches, impossible with *linear* models such as OU and BM.
 61 (3) Creating such a method not only allows us to accommodate this biological reality, but opens the
 62 door to once again exploring new questions in a comparative context, such as how many niches may
 63 be represented and how frequently transitions have occurred between them.

64 There is an existing approach attempting to deal with the challenge of multiple niches known
 65 as *painting*, which applies different OU models to different branches on the tree ([Butler and King,](#)
 66 [2004](#)). In this model-comparison approach one asks if there is evidence that a particular clade has a
 67 statistically significantly different optima than other clades (or branches) on the tree; much as has been
 68 done for BM model in [O’Meara et al. \(2006\)](#). There are several difficulties with this approach. First,
 69 it requires an informed way of selecting possible paintings of the tree, identifying different branches
 70 with different colors indicating they are governed by an independent evolutionary regime, as in Fig 2.
 71 Searching over all possible paintings may not only be infeasible but uninformative, as the transitions
 72 between regimes remove the phylogenetic signal. While the interpretation of different parts of the
 73 tree falling under different selective regimes seems very reasonable, transitions between such regimes
 74 may not occur only at nodes, particularly those nodes where both branches have a surviving ancestor
 75 (extinct lines introduce additional nodes on the tree). Further, it is difficult to estimate transition
 76 rates between regimes or the number of regimes that best fits the data – both potential quantities of
 77 interest. By taking a much more general, *nonlinear* model framework we will be able to address each
 78 of these challenges.

79 The introduction of OU model and the painting of multiple OU models onto a tree has allowed the
 80 field to enter the realm of model testing and model comparison. These comparisons are typically based
 81 on information criteria such as AIC, which penalize models that have more parameters by a certain
 82 factor. However, there is little reason to believe that AIC is fundamentally meaningful way to perform
 83 this discrimination. Using the data of [Butler and King \(2004\)](#) I fitted a Brownian motion model which
 84 I used to generate 1000 simulated datasets, then repeated the analysis on the simulated data. In 391
 85 of the sets the best chosen model of [Butler and King \(2004\)](#), which uses three different OU models,
 86 still has the best AIC score, indicating the penalization for extra parameters is not sufficient. As can
 87 be seen in figure 3, this 4:6 error rate is little better than a coin flip to choose models. Clearly the

88 question of model selection must be considered more carefully.

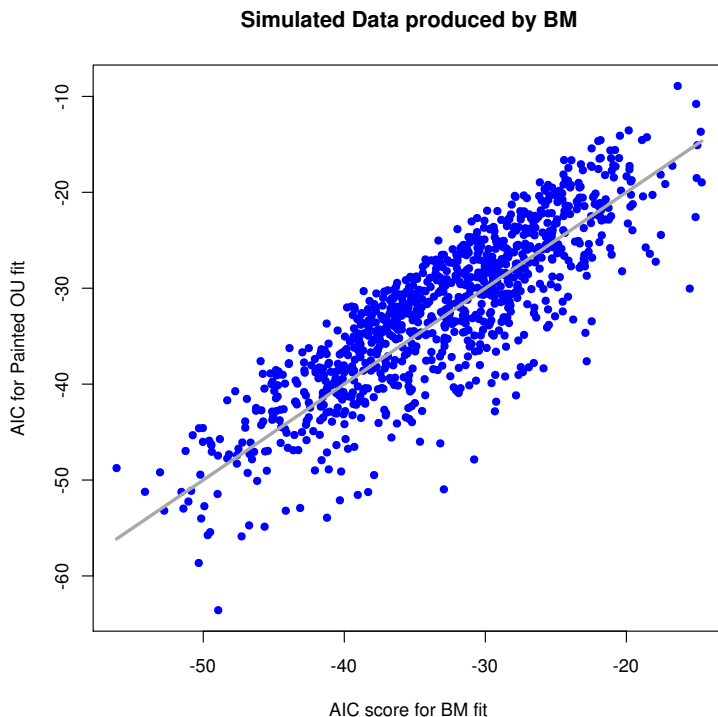


Figure 3: Points falling below the 1:1 line indicate a better (smaller, more negative) AIC score for the painted OU model despite the fact that the data was generated under BM. Note that some of the widest differences in AIC are errors.

89 In light of this, we need a new method. I propose to develop a robust, general Bayesian approach
90 that avoids these difficulties. Such a framework could explicitly account for multiple niches, and identify
91 clusters in traits or behaviors or ecology that representing niche differentiation. In the process we will
92 also visit how this approach can be used to capture other nonlinear models as well, such as bounded
93 Brownian motion models or even arbitrarily general models.

94 2. A model for multiple niches

95 Adaptive radiations are characterized by extensive diversification into a variety of ecological niches
96 over relatively short time scales that may generate much of the diversity of life. Typically this may be
97 driven either by invading an underutilized environment or through the development of a key innovation
98 (such as flight) which makes an array of possible niches available (though both these concepts of an
99 empty niche and a key innovation are subjects of active research).

100 Few examples are better studied than that of the Anolis lizards, particularly the six recognized
101 ecomorphs of the Greater Antilles Islands in the Caribbean. This radiation appears to have repeated
102 itself on four islands, through a balance of repeated invasions and repeated evolution. The ecomorphs
103 represent clusters of a suite of ecological, morphological and behavioral traits that occur repeatedly
104 though through different species across the islands, (see [Losos \(2009\)](#) for a thorough discussion).
105 Underlying the description of ecomorph is an *evolutionary* assumption – that evolution acts on this
106 suite of traits to generate the repeated emergence of the clusters.

- 107 1. It matters which traits we include in the description. We are interested in describing functional
108 traits. Measuring arbitrary traits and clustering along PCA is insufficient, as the functional trait
109 may not be a linear combination of the morphology – indeed the “many-to-one” mapping that
110 results from nonlinear interactions between morphology and performance is thought to be both
111 pervasive and important in our understanding of evolution. Fish jaw morphology provides an
112 excellent example, where performance can be well-characterized by suction index of a fish – an
113 example of the “right” functional trait which is not a linear combination of basic morphological
114 values.
- 115 2. We would like a robust quantitative way to define clusters along these trait axes. We should be
116 able to determine how many clusters exist and quantify how well we can discriminate between
117 peaks. Having identified interesting traits to test, there are two broad reasons why this clustering
118 may not be immediately apparent – noise and phylogenetic inertia. Noise could come from
119 many sources, from measurement error to environmental variation to the suite of other selective
120 demands on the traits; all of which serve to blur out distinct clusters. Phylogenetic inertia may
121 blur the distinction between groups if certain species have actively evolving in the direction of a
122 particular cluster from the vicinity of another, and hence may not fall clearly into one group.
- 123 3. We would like to do so in a way which reflects the evolutionary process. This will allow us to
124 better interpret the evolutionary significance of the parameters which define the clusters – for
125 instance, strength of selection within groups and rates of transitions between groups.
- 126 4. We would like to utilize phylogenetic information to inform the clusters. If we know the phyloge-
127 netic tree connecting all species in the analysis, we may be able to use this information not only
128 to correct for phylogenetic inertia but to penetrate the noise that may obscure clusters.

129 To make all of this more precise, we define a model that captures each of these elements. The
130 model consists of n regimes over trait space of dimension k . Within each regime is a single, linear,
131 multidimensional attractor driven by a white noise perturbation – *e.g.* the multi-dimensional Ornstein-
132 Uhlenbeck model,

$$dX = \alpha(\Theta - X)dt + \sigma dW_t \tag{1}$$

133 While in general X and θ are k dimensional trait vectors, α and σ $k \times k$ matrices of the trait
134 correlations and covariances and dW_t a k dimensional Weiner process (Brownian walk). For simplicity,
135 we will often consider a single trait, $k = 1$. In addition, a trait value may take a large jump into a
136 new regime – representing a sudden transition of environment or other selective pressure. Each regime
137 may have a unique transition rate into every other regime, reflecting how common available niches may
138 be, which we take to be constant. Assume that these transitions are independent of each other, we
139 have a Poisson process we can represent by the transition rate from regime i to j as the i, j term in
140 transition matrix \mathbb{Q} , $i \neq j$, where the diagonal terms are such that rows sum to zero. Fig. 4 provides
141 a conceptual illustration of such a model. For simplicity, we may assume that all transition rates are
142 symmetric (the rate from i to j equals the rate from j to i) or that some transitions are impossible.
143 Another convenient simplification may be that all regimes are characterized by the same diversification
144 rate σ , making the width determined entirely by α (recall that at the stationary state the distribution
145 is Gaussian with variance $\frac{\sigma^2}{2\alpha}$).

146 Such a model can capture each of the criteria discussed above.¹ (1) This model is defined over the
147 trait space of interest, or a subspace thereof. (2) It provides a quantitative description the clusters:

¹ It is worth noting that this is certainly not the only formulation of a model that satisfies these objectives. For instance, we could have used a singular *nonlinear* stochastic differential equation rather than this collection of multiple linear ones (the OU models). The regime formulation has both conceptual and practical advantages, such as separating

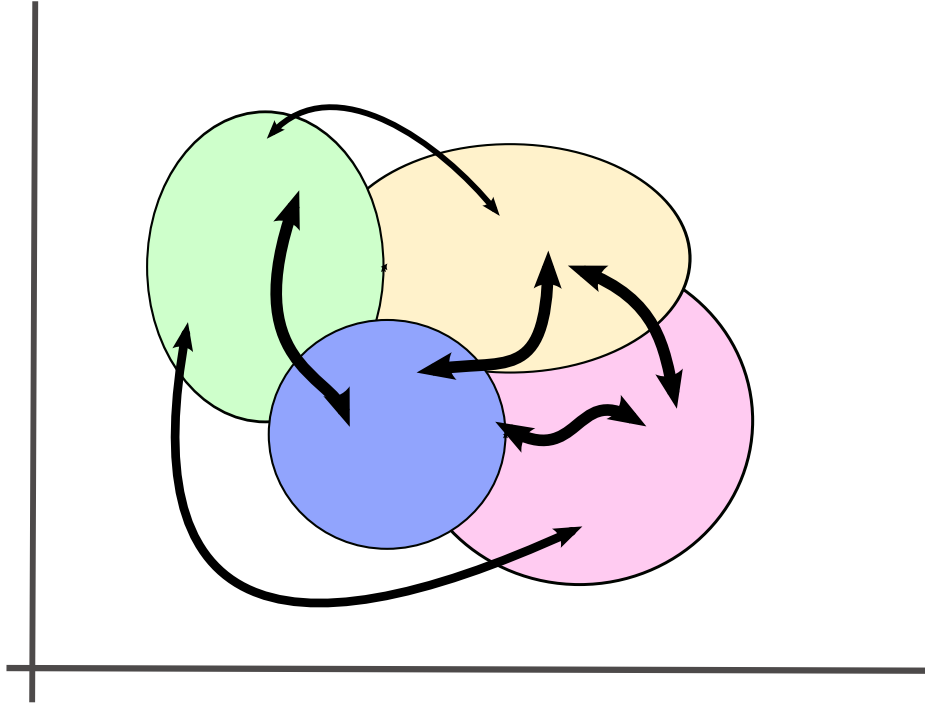


Figure 4: A conceptual model of four ecomorphs and transitions between them. Axes represent trait space, and ecomorphs differ in the location of their optima with respect to each trait and the strength of selection in each dimension. Rates of transitions may differ (as indicated by different weights) and need not be symmetric. Mathematically this could be captured by an OU process centered at the optimum of each cluster with the appropriate strength of selection α relative to diversification σ . Transitions could be captured as a Poisson process with transition rate matrix \mathbb{Q} .

148 the number (n), size ($\frac{\sigma_i^2}{2\alpha_i}$), and locations (θ_i) and capacity (through the transition rates – regimes
 149 with rapid transitions out will represent niches with lower occupancy). (3) The model has a meaningful
 150 evolutionary interpretation – θ_i are selective optima under i different environments/interactions, α_i the
 151 strengths of selection, variation within a regime is captured by σ_i while diversification rate across niches
 152 is determined by the transition rates. This can explicitly model the noise due to competing selective
 153 forces, or other fluctuations through σ_i . Lastly, it is a dynamic model, explicitly describing a time
 154 dependent process. This enables us to (4) use the phylogenetic information in the tree by assuming
 155 that separate branches of the tree spawn independent instances of the process starting from the same
 156 initial condition. Not only will this allow us to correct for phylogenetic inertia, but it improves our
 157 ability to estimate dynamic quantities of the model.

158 3. Method

159 3.1. The right data

160 The data refers to a suite (vector) of observed traits across taxa their ultrametric tree. We will
 161 assume for the moment that the traits are continuously valued. We imagine defining the observed

the process of diversification within a regime from that between regimes, while the linearity makes the regimes easy to treat.

162 traits at all of the tips of the tree, where they are interpreted as mean trait values for the species
163 (though in practice they may consist of single samples). This data could be morphological (limb length),
164 behavioral (movement speed) or ecological (structural habitat). For the moment we will ignore both any
165 uncertainty in the tree and variation in around these trait means, though later we will explore including
166 both. This kind of data and assumptions are typical of comparative methods applications. While it
167 is common to transform trait values and to use principle component analysis (PCA) combinations of
168 trait values, we caution against the unconsidered application of either of these, and prefer to focus
169 on a carefully selected, interpretable trait. Log-transforms are particularly common as a way of non-
170 dimensionalizing the data. The difficulty in doing so is that the expectation of the transformed trait
171 is not the same as the transformation of the expected trait value under non-linear transformation
172 such as logarithms – *e.g.* if the expected log limb size is constant, then the expected limb size is
173 shrinking. As mentioned before, the difficulty in PCA also stems from the linearity assumption. A good
174 example is the concept of suction index in fish feeding performance. Suction index is a non-dimensional
175 morphological trait that is closely correlated with feeding performance and differs significantly across
176 fish with different diets. The index is a nonlinear function of five morphological measurements of
177 the fish jaw, and is likely to be much more informative than generic transforms. Starting with good
178 functional morphology greatly enhances the potential of these approaches.

179 3.2. The Joint Probability

180 Having framed the model, we must define the how to evaluate the joint probability of the observed
181 data given the model. This joint probability will be the fundamental building block of the method
182 which we will use to fit parameters of the model and select between models. The joint probability of
183 seeing the observed trait data at the particular nodes at which it appears under a given model can be
184 calculated by unfolding the tree and integrating over the unknown nodes as follows: If we know the
185 root, we can use the transition densities to determine probability distribution of trait values for each
186 of its daughter nodes by knowing the length of time between them, $w(x_r, x_i, t_{ij})$. As we don't know
187 the root, we must integrate this transition density over all possible values of the root node, $P(x_r)$.
188 Similarly, we must integrate over possible values for each of the internal nodes, as they are unknown.
189 To visualize this, consider a simple example such as the tree given in Fig. 5. We could write the joint
190 probability as:

$$\begin{aligned}
 P(x_1, x_2, x_3, x_4) = \int dx_7 \left[\left[\int dx_5 w(x_7, x_5, t_5) w(x_5, x_1, t_1) w(x_5, x_2, t_1) \right] \right. \\
 \left. \times \left[\int dx_6 w(x_7, x_6, t_6) w(x_6, x_3, t_3) w(x_6, x_4, t_3) \right] P(x_7) \right] \quad (2)
 \end{aligned}$$

191 In a numerical implementation, this can be defined as a recursion over matrix multiplications.
192 Assume the trait assumes values in an interval \mathbb{I} which we discretize into m points. Then along each
193 branch we can place the transition rate as an m by m matrix of the transition rates from any point in
194 the space to any other during that time interval. As the values at the tips are known, we need only the
195 column corresponding to transitions to the observed state. If the root node is specified (as a parameter
196 of the model) then its branches are row vectors from the given trait to each point along the interval.
197 The recursion starts at the root with this row vector and multiplies the row vector it receives from
198 the previous node by the transition matrices of its left and right children. This proceeds up the tree
199 until it reaches a tip, in which case the row vector multiplies the column vector of the tip to produce
200 a scalar. The product of all these scalars is the joint probability.

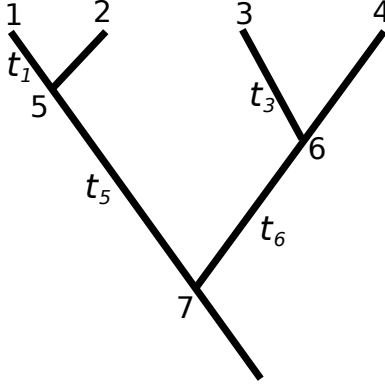


Figure 5: A simple phylogenetic tree.

201 If we assume that when a population transitions to a new state it immediately assumes trait values
 202 from the stationary distribution of the process, then the transition probability along a branch from
 203 node i to j is given by:

$$w(x_i, s_i, x_j, s_j, t_{ij}) = \underbrace{\left[e^{t_{ij} \mathbb{Q}} \right]_{s_i s_j}}_{\text{all transitions}} \Pi_{s_j}(x_j) + \underbrace{\mathbb{I}_{s_i=s_j}}_{\text{Indicator fn}} \left[\underbrace{-e^{t_{ij} Q_{s_i s_i}} \Pi_{s_i}(x_j)}_{\text{minus case no transitions}} + \underbrace{e^{t_{ij} Q_{s_i s_i}} w_{s_i}(x_i \rightarrow x_j, t_{ij})}_{\text{use the transition density instead}} \right] \quad (3)$$

204 where $\Pi_{s_j}(x_j)$ is the stationary distribution of regime s_j and $w_{s_i}(x_i \rightarrow x_j, t_{ij})$ is the time dependent
 205 rate of the OU process (see Appendix).

206 4. Fitting the model

207 Once we can calculate the joint probability of the data under a given model and parameterization,
 208 we have a wide array of potential methods that will help us search for the best value of the parameters
 209 and subsequent selection between models. For a variety of reasons, it is particularly appealing to frame
 210 this question in Bayesian context where the analysis will be performed through Markov Chain Monte
 211 Carlo (MCMC). Of particular interest is the trans-dimensional MCMC proposed by [Green \(1995, 2003\)](#),
 212 which provides a unified framework for simultaneously fitting model parameters and selecting between
 213 models that differ in the number of regimes (and hence the number of parameters) they have. Without
 214 such approach the comparison of number of transitions can be done in an information-theoretic context
 215 such as AIC or Bayes (Schwartz) Information Criterion after the models have been fitted.

216 5. Example Systems

217 Labrid fishes are a potentially rich example of such a radiation, accounting for over 600 species of
 218 wrasses and parrotfish found in diverse micro-habitats in coral reefs around the world and spanning a
 219 particularly impressive range of dietary niches, including molluscs, corals, fish parasites, zooplankton
 220 and other fishes ([Bellwood et al., 2006](#)). Dietary preference is strongly controlled by both skull and
 221 pectoral fin morphology which limits the kind of resources the fish can capture and process, and the
 222 morphological diversity in these traits reflects the ecological variation in diet ([Collar et al., 2008](#)).

223 Extensive research has documented the particular morphological traits responsible for feeding per-
224 formance. Labrid fish swim almost entirely with their pectoral fins alone, rather than relying on body
225 and caudal fin motion. Fins vary between high aspect ratio (AR), long, thin shapes that flap in a
226 wing like motion, and low AR, rounder shapes that row in a paddle motion, Fig. 6(a). High AR fins
227 perform at higher speeds and these species tend to occupy higher flow areas of the reef, while lower
228 AR fins perform better at rapid turns and maneuverability (Wainwright and Bellwood, 2001). Jaw
229 morphology differs between strong sucking jaws and powerful crushing jaws, Fig 6(b) which correlate
230 strongly with diet composition (Wainwright, 1988). As the functional roles of these complex traits
231 has clear implications for the array of possible niche types characteristic in the diversity of Labrids,
232 they provide a natural system to test how phylogenetic comparisons inform our understanding of niche
233 differences. Using these traits and available ultrametric trees for Labrid fishes, we want to explore the
234 following questions:

- 235 1. How many different niches are represented?
- 236 2. How frequently do transitions occur between niche strategies?
- 237 3. Where is each niche optima located, how far apart and with what width?
- 238 4. Can we make niche assignments of present-day species based on this reconstruction?

239 These traits may capture much of the functional diversity responsible for the niche diversity that
240 may underly an adaptive radiation, and phylogenetic comparative methods have already proved useful
241 in exploring their evolutionary significance (Collar et al., 2005, 2009, 2008). As they may underlie niche
242 differentiation, they may exhibit the kinds of clustering shown to be a challenge for existing methods
243 when exploring concepts such as ancestral states or changing rates of diversification. However, due
244 to competing demands of selection on these and other correlated traits as well as other sources of
245 variability, the distribution of traits observed in the present day may not reveal the obvious niche
246 differences presented in the imaginary example of Fig. 1(b). In fact, many potentially differentiating
247 traits often present an essentially unimodal distribution of values across observed species. Our goal,
248 then, is use the way in which those values are distributed across a phylogenetic tree to infer how many
249 different niche strategies may be represented across this distribution of traits. To see how this might
250 work in principle, let us consider another hypothetical example.

251 The first step in demonstrating that such an inference is possible in principle is to demonstrate
252 how a continuous trait under stabilizing selection for one of two distinct optima representing different
253 niche strategies could produce a unimodal distribution in trait values due to random selection on other
254 traits, environmental variation, or genetic drift. We illustrate this with a simulation shown in Fig. 7
255 under different intensities of such random effects.

256 Having seen how the problem arises, we describe how the phylogeny can help us reveal the underlying
257 structure despite the noise. Given some unimodal distribution of traits, there are many possible
258 arbitrary phylogenetic trees we could draw potentially showing how they are related. The simplest
259 description of the unimodal peak will be a single attractor (OU) at the mode or BM diffusion that
260 began at that mode. The key to distinguishing between BM, OU, and multiple niche description will
261 rely on the differences in closely related species compared to those in distantly related species. Under
262 BM, the distance in traits should be increase (as the square root) of the branch lengths between traits
263 (as this model has no stationary distribution, distances always increase). Under OU model, distantly
264 related species should appear independent, given by the decorrelation time introduced by the selective
265 force (α), since they become samples from the stationary distribution of the model. In a multiple niche
266 model, distantly related species will still appear more correlated than expected, as they may still be
267 trapped near the same niche, while not having reached the stationary distribution where they may be
268 independently likely to be found in any of the niches. We simply require an approach that can consider

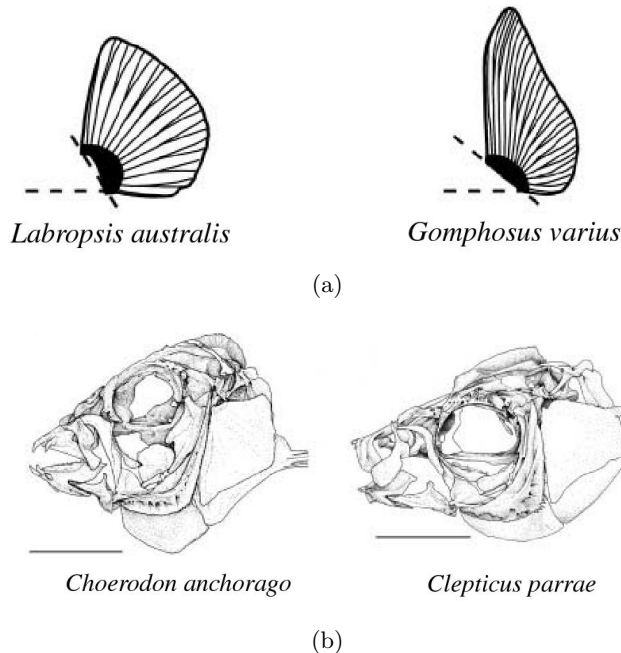


Figure 6: Fin morphology falls into essentially two distinct classes: fins with low aspect ratio (left) for faster turns and fins with high aspect ratio (right) for sustained swimming at high speed, reproduced from (Collar et al., 2008).

269 the impact of the phylogenetic structure has on the likelihood we observe the particular distribution
 270 of data along the tree tips.

271 Ultimately, we would like such a method to be implemented as an open source and freely distributed
 272 software package to facilitate this analysis, as researchers have done for existing methods *i.e.* Harmon
 273 et al. (2008); Butler and King (2004); Hansen et al. (2008); Pagel and Meade (2006); Paradis (2004);
 274 O’Meara et al. (2006).

275 6. Extensions

276 Beyond the ability to search for number and positions of niches and transitions between them,
 277 this general framework allows many other possible extensions to the phylogenetic comparative method
 278 framework. To convey this potential, we briefly list several possible directions here which we hope to
 279 incorporate.

280 6.1. Statistical indicators: estimating power, confidence intervals and posteriors

281 Some statistical validation should be part of any method. Particularly important here is the ob-
 282 servation that any particular outcome is intrinsically unlikely, given the enormous number of possible
 283 outcomes of any model. Nevertheless, estimates of power are relatively straight forward, if computa-
 284 tionally intense, to provide. Given a selected model with its maximum likelihood parameter values, one
 285 can create a set of simulated data sets and then run the method on this simulated data and compare
 286 the spread in parameter estimates from each of these runs. Creating simulated data sets is quite fast,
 287 though clearly the comparison will scale linearly with the number of simulated sets used. In the same
 288 fashion one can estimate the power of the model selection algorithm by asking for how many of the
 289 simulated data sets does the method select the same model as the best choice?

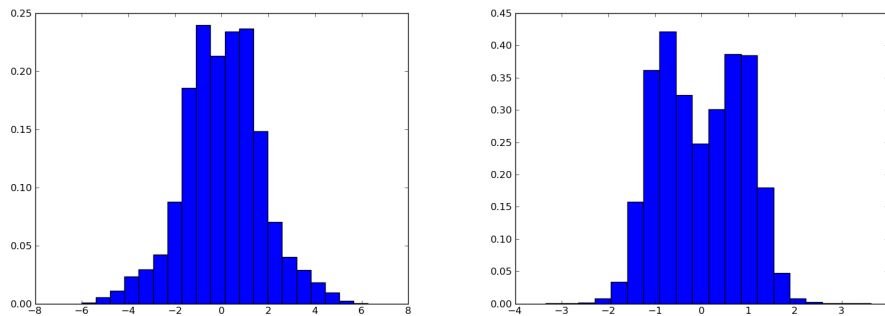


Figure 7: Variance due to random effects obscures the underlying two basins of attraction (niches) on the left. On the right, under reduced variance the shape of the adaptive landscape is more visible

290 6.2. Multi-dimensional traits

291 Though we have discussed this in the context of a single continuous trait, the principles involved
 292 are the same for vector valued traits. This requires determining the transition density from any point
 293 in this vector space to any other point, which quickly becomes computationally intensive in the general
 294 case. In practice, several analytical shortcuts may be possible. Further, if the evolution of the traits is
 295 independent, a scalar valued model could be applied independently for each trait. Such an approach
 296 could be used to create independent contrasts under models other than BM that could then be tested
 297 for correlations with classical regression techniques.

298 6.3. Discrete traits

299 While we have focused on continuous traits for simplicity of presentation, this method is equally well
 300 suited to handle discrete phenotypic traits. While Pagel (1994); Pagel et al. (2004) already provide
 301 a phylogenetic comparative methods framework for discrete traits, our approach can handle both
 302 simultaneously; in fact the regime model is one such example of this – the regimes could represent
 303 discrete traits which influence which optimum a continuous trait centers around; *i.e.* nocturnal /
 304 diurnal behavior and temperature preference, or carnivory / omnivory / herbivory and a continuous
 305 measure of tooth morphology.

306 6.4. Incorporating fossils

307 Incorporating fossil information in this approach is very straight forward, as the information can
 308 be specified at the appropriate node and then treated like a tip value, rather than being integrated
 309 over. Available fossil information can also be used to assess the accuracy of ancestral state reconstruc-
 310 tion under this approach by running the model without the fossil data and comparing. The method
 311 could also be applied to evolutionary experiments in microbes, where freezers could preserve samples
 312 throughout the evolutionary history for comparison.

313 6.5. Changing Environments: Niche creation and loss

314 This relaxes the Markov assumption in the transition densities, calculating transition densities for
 315 going from state x_1 at time t_1 to state x_2 at time t_2 ($w(x_1, x_2, t_1, t_2)$), rather than going from x_1 to x_2 in
 316 an interval $t = t_2 - t_1$. Simple applications of this would simply divide the tree into epochs – say after
 317 a fixed time (perhaps predetermined based on external data) transition densities are computed with a
 318 model of three peaks and before that time with a model using only two peaks, and this fit is compared
 319 to the model scores of always using two or always using three peaks. This provides a potential test

320 of whether the data shows any evidence of such a shift occurring, or at least an estimate that the
321 data lacks the power to detect such a change. This can be used as a way of incorporating additional
322 information about climate such as might be estimated from timing of ice ages or the introduction of
323 a novel species or an antibiotic (say, for model of bacterial evolution) into the system, or attempt to
324 estimate the timing of the transition as a model parameter.

325 The goal of the extensions is to allow more of what we know about the biology and its environmental
326 context to inform our method, rather than increase the number of things we attempt to estimate with
327 limited data. This is crucial to bear in mind, for while they may sound different, the ability to do one
328 enables the ability to do the other – adding a source of information or estimating it as a free parameter.
329 Thus adding fossils is the converse of estimate ancestral states, and estimating such a time shift the
330 converse of using external information about such a change to enforce a shift. While it is tempting
331 to be as agnostic as possible, the goal should be more on the former use, fixing constraints based on
332 additional data, than on the latter – estimating more quantities with less data.

333 6.6. Bounded diversification and noise models

334 Brownian motion may provide a reasonable model within a certain range of trait values but be
335 bounded by certain constraints. We may imagine this as a random walk in a box, and attempt to
336 estimate where the locations of the walls of this box might be based on the data. These could be
337 represented by reflecting boundaries or as soft boundaries where species experience stronger selection
338 towards the center if they approach the boundary but no directional selection when far from any wall.

An alternative construction to this might simply limit the phenotypic variance available at the
extreme ends of a range. For instance, one could choose a model of the form:

$$dX = \beta \exp\left(\frac{-(X - \theta)^2}{2\sigma^2}\right) dB_t, \quad (4)$$

339 a random walk where the size of the steps decreases away from the center of the range θ , that is, high
340 diversification rates are found near the center of the trait distribution but decrease as one moves away.²

341 6.7. Ecologically realistic models

342 Ecological interactions are largely abstracted away in this approach. [Gavrilets and Vose \(2005\)](#) and
343 [Gavrilets and Losos \(2009\)](#) consider several detailed individual-based computer simulations of adaptive
344 radiations driven by explicit mechanisms. It would thus be a valuable test what level of detail can be
345 recovered by the methods proposed here using data generated under these simulations (which recreate
346 both the phylogenetic history and the character trait evolution).

347 Such individual, mechanistically based descriptions could also be employed directly in this approach.
348 Recall that the only conditions on possible models is the ability to somehow specify (potentially by
349 simulation) a transition density. In this way such rich mechanistic simulations can be directly tested
350 against phylogenetic data, or used to approximate a transition density equation that can be so tested.

351 6.8. Scoring empirical performance landscapes

352 This approach is not limited to adaptive landscapes or niche structures that can be specified by
353 simple functions. In some cases, researchers can actually measure performance of an organism with
354 respect to a fitness correlate across a diversity of morphologies – such as suction index or prey capture.
355 These performance landscapes could be input directly into the model as representations of fitness

²One could view this as an SDE for the transformed variable with constant noise term by Lamperti transform, see [Iacus \(2008\)](#).

356 constraints with respect to these traits, rather than the simple multi-modal functional forms otherwise
 357 assumed. The method would not have to fit any parameters for the shape of this landscape, though it
 358 may choose the best fit of a noise parameter, and could return likelihood score for the model. While not
 359 directly amiable to simple model comparison metrics such as AIC, the ability to determine likelihood
 360 alone may be informative.

361 7. Significance and Broader Impacts

362 An understanding of the mechanisms and patterns responsible for generating biodiversity lies at
 363 the heart of many important challenges we face today – from vanishing biodiversity due to exploitation
 364 and anthropogenic environmental changes and the ability of existing species to adapt in face of those
 365 changes to the control of diseases and pests that continually evolve away from control measures. Thanks
 366 to rapid developments in sequencing technology, bioinformatic methods and computational power,
 367 phylogenetic information is increasingly available for a diversity of taxa. Despite there limitations in
 368 power, simplifying assumptions and other shortcomings, phylogenetic comparative methods often offer
 369 us our only periscope back into the past of evolutionary history, beyond the temporal capacities of
 370 experiment and the paucity of the fossil record. New methods both extend our ability to utilize this
 371 information and lessen our chances of being trapped by the limited tools we have available.

372 The continued development in phylogenetic comparative methods influences not only how we ap-
 373 proach problems but in how we approach science as a process. We select the best description available
 374 based on the observed evidence rather than evaluating and rejecting descriptions serially. We use meth-
 375 ods customized for the particular biological questions we seek to answer, rather than one-size-fits-all
 376 methods designed to ignore and abstract away that biology. Though the methods become more com-
 377 plex, they are implemented in software that makes it easier for researchers to easily and accurately
 378 implement the method in way that is repeatable, standardized, and easily verifiable by the rest of the
 379 community. Software is open source, allowing the research community to see clearly how details and
 380 methods are implemented, as well as catch errors or suggest improvements or extensions that can easily
 381 be distributed. Research communities emerge around the infrastructure these methods create, such
 382 as email lists, forums, websites and wikis that connect researchers across boundaries of institutions,
 383 nationalities, disciplines and academic degrees. New data sets and methods are more rapidly dissemi-
 384 nated and shared through the common infrastructure, and science proceeds at both a greater pace and
 385 with greater cross-validation.

386 Appendix A. Model Library

Brownian Motion

$$dX_t = \sigma dB_t \tag{A.1}$$

Ornstein-Uhlenbeck

$$dX_t = \alpha(\theta - X_t)dt + \sigma dB_t \tag{A.2}$$

N Gaussian Niches:

$$dX_t = \left(\sum_i \alpha_i (\theta_i - X_t) e^{-\frac{(\theta_i - X_t)^2}{2\omega_i^2}} \right) dt + \sigma dB_t \tag{A.3}$$

387 **Appendix B. Why the linear process is easy**

388 If the continuous trait dynamics are generated by a diffusion process with linear rates, *i.e.* an
 389 stochastic differential equation (SDE) of the form $dX_t = f(X_t)dt + g(X_t)dB_t$ and $f(x)$ and $g(x)$ are
 390 linear functions of x , then the resulting diffusion is a Gaussian process. Any collection of points resulting
 391 from a Gaussian process has a multivariate normal distribution. Further, if evolution unfolds on a
 392 phylogenetic tree according to a Gaussian process, the joint distribution of any set of taxon phenotypes
 393 is a multivariate normal, as proved in Hansen and Martins (1996). This is easily demonstrated by
 394 induction: starting with MVN set of traits X we can always add a node Y that is not an ancestor to any
 395 of the existing nodes, then the joint distribution of X and Y is multivariate normal. Consequently, to
 396 determine the joint distribution it suffices to calculate the expected trait values and variance-covariance
 397 structure of the nodes.

$$\text{Cov}(X_i, X_j) = \text{Cov}(E(X_i|X_z), E(X_j|X_z)) \quad (\text{B.1})$$

398 Because f is linear, it is straightforward to find the moments of the SDE. The conditional expect-
 399 ation $E(X_i|X_z)$ comes from solving the ODE with linear f and constant g , $dE(X_i) = E(f(X_i))dt$
 400 with the initial condition $E(X_i(0)) = X_z$. Similarly we can find the variance: for instance, for the OU
 401 process with initial condition $X(0) = X_a$ we have,

$$E(X_t|X_a) = \alpha \int_0^t \theta(s)e^{-\alpha(t-s)}ds + X_ae^{-\alpha t}, \quad (\text{B.2})$$

which for constant θ is

$$E(X_t|X_a) = \theta(1 - e^{-\alpha t}) + X_ae^{-\alpha t} \quad (\text{B.3})$$

$$\text{Var}(X_t|X_a) = \frac{\sigma^2}{2\alpha}(1 - e^{-2\alpha t}), \quad (\text{B.4})$$

$$\text{Cov}(X_i, X_j) = e^{-\alpha t_{ij}} \text{Var}(X_a), \quad (\text{B.5})$$

402 see Hansen (1997).

403

404 Bellwood, D. R., Wainwright, P. C., Fulton, C. J., Hoey, A. S., 2006. Functional versatility supports
 405 coral reef biodiversity. *Proceedings of The Royal Society B* 273 (1582), 101–7.

406 URL <http://www.ncbi.nlm.nih.gov/pubmed/16519241>

407 Butler, M. A., King, A. A., December 2004. Phylogenetic Comparative Analysis: A Modeling Approach
 408 for Adaptive Evolution. *The American Naturalist* 164 (6), 683–695.

409 URL <http://www.journals.uchicago.edu/doi/abs/10.1086/426002>

410 Collar, D. C., Near, T. J., Wainwright, P. C., August 2005. Comparative analysis of morphological
 411 diversity: does disparity accumulate at the same rate in two lineages of centrarchid fishes? *Evolution*
 412 59 (8), 1783–94.

413 URL <http://www.ncbi.nlm.nih.gov/pubmed/16329247>

414 Collar, D. C., O’Meara, B. C., Wainwright, P. C., Near, T. J., 2009. Piscivory Limits Diversification
 415 of Feeding Morphology in Centrarchid Fishes. *Evolution* 63 (6), 1557–1573.

416 URL <http://www.bioone.org/doi/full/10.1111/j.1558-5646.2009.00626.x?prevSearch=>

- 417 Collar, D. C., Wainwright, P. C., Alfaro, M. E., 2008. Integrated diversification of locomotion and
418 feeding in labrid fishes. *Biology Letters* 4 (1), 84.
419 URL <http://intl-rsbl.royalsocietypublishing.org/content/4/1/84.full>
- 420 Cunningham, C., September 1998. Reconstructing ancestral character states: a critical reappraisal.
421 *Trends in Ecology & Evolution* 13 (9), 361–366.
422 URL <http://linkinghub.elsevier.com/retrieve/pii/S0169534798013822>
- 423 Felsenstein, J., 1985. Phylogenies and the comparative method. *The American Naturalist* 125, 1–15.
424 URL <http://www.journals.uchicago.edu/doi/abs/10.1086/284325>
- 425 Freckleton, R. P., Harvey, P. H., 2006. Detecting Non-Brownian Trait Evolution in Adaptive Radiations.
426 *PLoS Biology* 4 (11), 2104–2111.
- 427 Garland, T. J., December 1992. Rate Tests for Phenotypic Evolution Using Phylogenetically Independent
428 Contrasts. *The American Naturalist* 140 (3), 509 – 519.
- 429 Gavrilets, S., Losos, J. B., 2009. Adaptive radiation: contrasting theory with data. *Science* 323, 732–
430 737.
431 URL <http://science.samxxzy.ns02.info/cgi/content/abstract/323/5915/732>
- 432 Gavrilets, S., Vose, A., December 2005. Dynamic patterns of adaptive radiation. *Proceedings of the*
433 *National Academy of Sciences* 102 (50), 18040–5.
434 URL <http://www.ncbi.nlm.nih.gov/pubmed/16330783>
- 435 Green, P., 1995. Reversible jump Markov chain Monte Carlo computation and Bayesian model deter-
436 mination. *Biometrika* 82 (4), 711.
437 URL <http://biomet.oxfordjournals.org/cgi/content/abstract/82/4/711>
- 438 Green, P., 2003. Trans-dimensional markov chain monte carlo. Vol. 27. Oxford University Press, p.
439 179198.
440 URL <http://books.google.com/books?hl=en&lr=&id=NecQlPWrN3AC&oi=fnd&pg=PA179&dq=Trans-dimensional+Markov+chain+Monte+Carlo&ots=wOnwarZKQd&sig=08sciWOMmaUqRl6eEzDltzTgzLo>
- 443 Hansen, T. F., 1997. Stabilizing selection and the comparative analysis of adaptation. *Evolution* 51 (5),
444 13411351.
445 URL <http://www.jstor.org/stable/2411186>
- 446 Hansen, T. F., Martins, E. P., 1996. Translating between microevolutionary process and macroevolu-
447 tionary patterns: the correlation structure of interspecific data. *Evolution* 50 (4), 14041417.
448 URL <http://scholar.google.com/scholar?hl=en&btnG=Search&q=intitle:Translating+Between+Microevolutionary+Process+and+Macroevolutionary+Patterns#0>
- 450 Hansen, T. F., Pienaar, J., Orzack, S., 2008. A comparative method for studying adaptation to a
451 randomly evolving environment. *Evolution* 62 (8), 1965–1977.
452 URL <http://www.bioone.org/doi/full/10.1111/j.1558-5646.2008.00412.x?prevSearch=>
- 453 Harmon, L. J., Weir, J. T., Brock, C. D., Glor, R. E., Challenger, W., 2008. Bioinformatics applications
454 note. *Bioinformatics* 24 (1), 129–131.
- 455 Iacus, S. M., 2008. *Simulation and Inference for Stochastic Differential Equations With R Examples*.
456 Springer, New York.

- 457 Losos, J., December 1999. Uncertainty in the reconstruction of ancestral character states and limitations
458 on the use of phylogenetic comparative methods. *Animal behaviour* 58 (6), 1319–1324.
459 URL <http://www.ncbi.nlm.nih.gov/pubmed/10600155>
- 460 Losos, J. B., 1996. Perspectives on Community Ecology. *Ecology* 77 (5), 1344–1354.
- 461 Losos, J. B., 2009. *Lizards in an Evolutionary Tree: Ecology and Adaptive Radiations of Anoles*.
462 University of California Press, Berkeley, Los Angeles, London.
- 463 Martins, E. P., Hansen, T. F., 1997. Phylogenies and the Comparative Method: A General Approach
464 to Incorporating Phylogenetic Information into the Analysis of Interspecific Data. *The American*
465 *Naturalist* 149 (4), 646–667.
- 466 O’Meara, B. C., Ané, C., Sanderson, M. J., Wainwright, P. C., May 2006. Testing for different rates of
467 continuous trait evolution using likelihood. *Evolution* 60 (5), 922–33.
468 URL <http://www.ncbi.nlm.nih.gov/pubmed/16817533>
- 469 Pagel, M., 1994. Detecting Correlated Evolution on Phylogenies: A General Method for the Compar-
470 ative Analysis of Discrete Characters. *Proceedings of The Royal Society B* 255, 37–45.
- 471 Pagel, M., Meade, A., May 2006. Bayesian Analysis of Correlated Evolution of Discrete Characters by
472 Reversible-Jump Markov Chain Monte Carlo. *The American Naturalist* 167 (6).
473 URL <http://www.ncbi.nlm.nih.gov/pubmed/16685633>
- 474 Pagel, M., Meade, A., Barker, D., 2004. Bayesian estimation of ancestral character states on phyloge-
475 nies. *Systematic biology* 53 (5), 673–84.
476 URL <http://www.ncbi.nlm.nih.gov/pubmed/15545248>
- 477 Paradis, E., 2004. APE: Analyses of Phylogenetics and Evolution in R language. *Bioinformatics* 20 (2),
478 289–290.
479 URL [http://www.bioinformatics.oupjournals.org/cgi/doi/10.1093/bioinformatics/
480 btg412](http://www.bioinformatics.oupjournals.org/cgi/doi/10.1093/bioinformatics/btg412)
- 481 Schluter, D., Price, T., Mooers, A., Ludwig, D., 1997. Likelihood of ancestor states in adaptive radia-
482 tion. *Evolution* 51 (6), 1699–1711.
483 URL <http://www.jstor.org/stable/2410994>
- 484 Wainwright, P. C., 1988. Morphology and ecology: functional basis of feeding constraints in Caribbean
485 labrid fishes. *Ecology* 69 (3), 635–645.
486 URL [http://scholar.google.com/scholar?hl=en&btnG=Search&q=intitle:Morphology+and+
487 Ecology:+Functional+Basis+of+Feeding+Constraints+in+Caribbean+Labrid+Fishes#0](http://scholar.google.com/scholar?hl=en&btnG=Search&q=intitle:Morphology+and+Ecology:+Functional+Basis+of+Feeding+Constraints+in+Caribbean+Labrid+Fishes#0)
- 488 Wainwright, P. C., Bellwood, D. R., 2001. Locomotion in labrid fishes: implications for habitat use
489 and cross-shelf biogeography on the Great Barrier Reef. *Coral Reefs* 20, 139–150.
- 490 Williams, E., 1969. The ecology of colonization as seen in the zoogeography of anoline lizards on small
491 islands. *The quarterly review of biology* 44 (4), 345–389.
492 URL <http://www.jstor.org/stable/2819224>