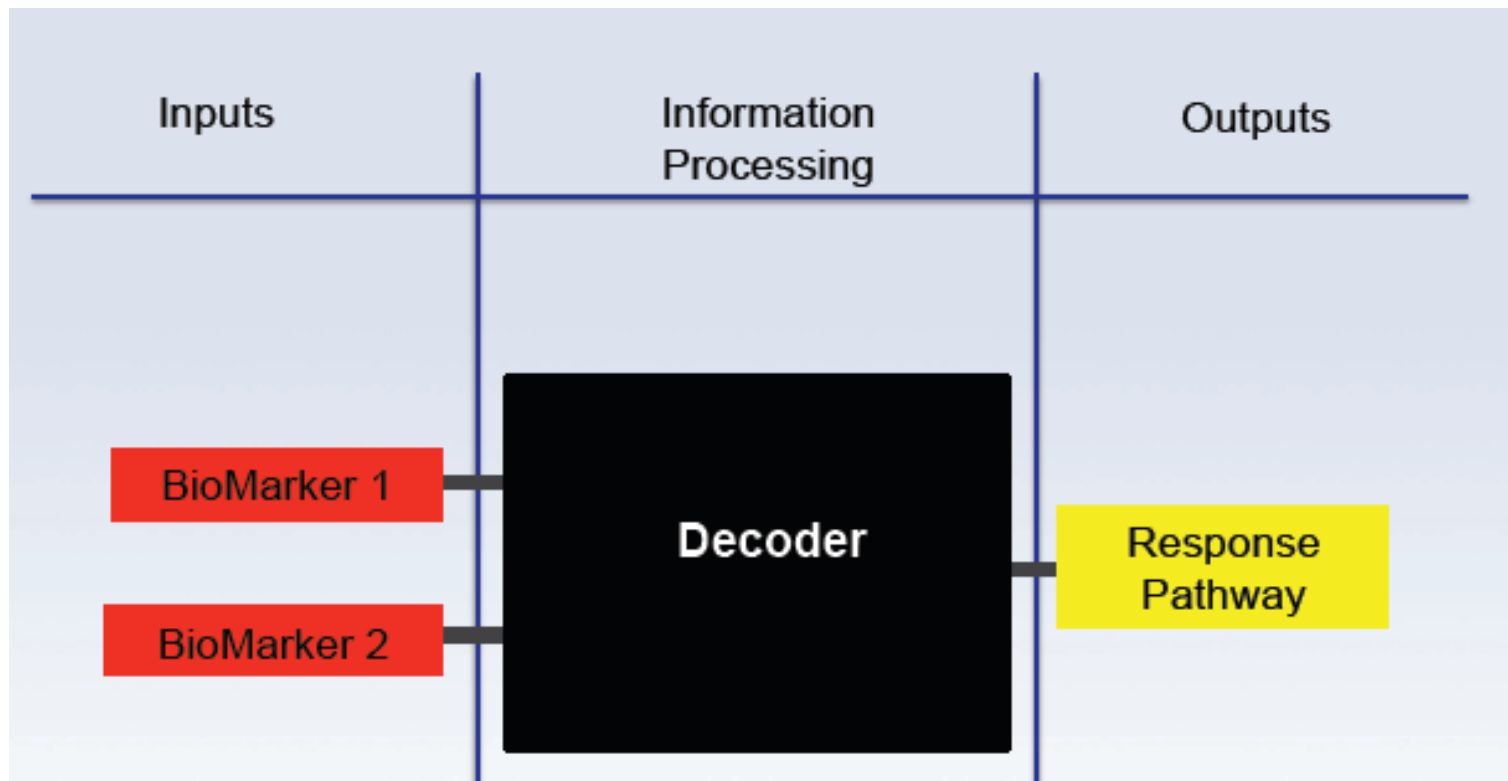


# Eau d'coli

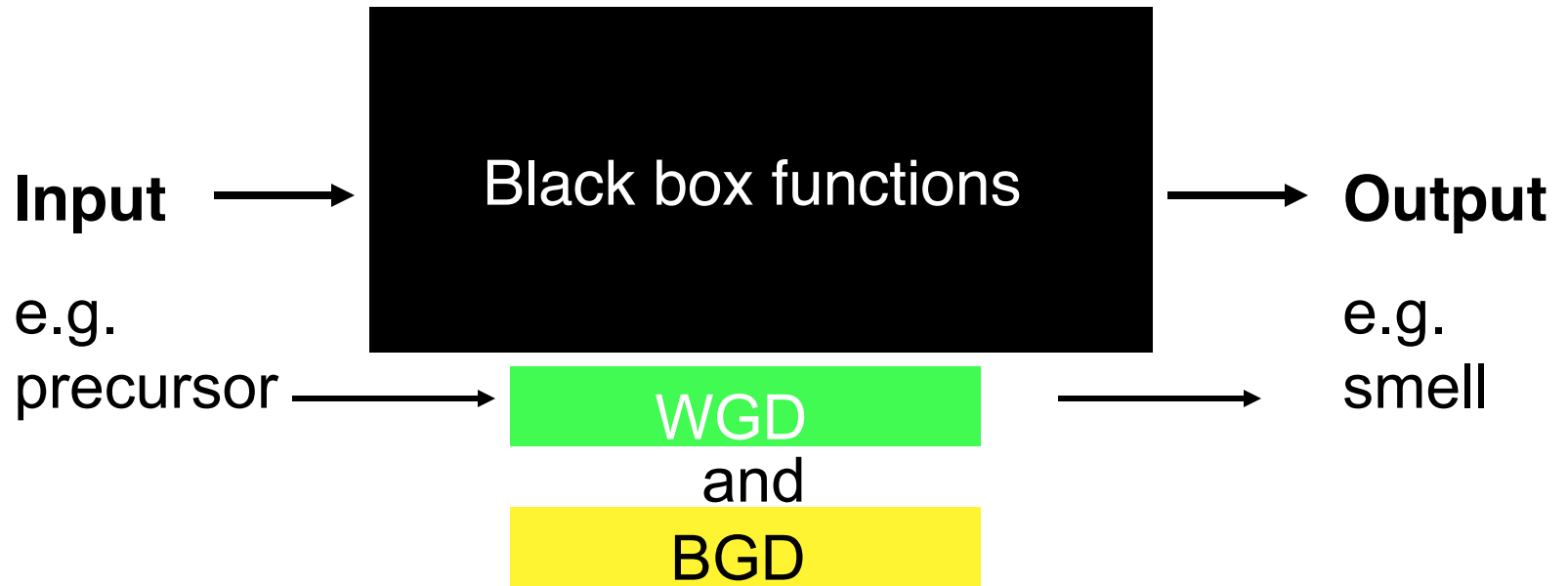
N Kuldell for 20.020

Spring 2010

# System level description: initial planning



# System level description: initial planning



WGD: Wintergreen Generating Device  
BGD: Banana Generating Device





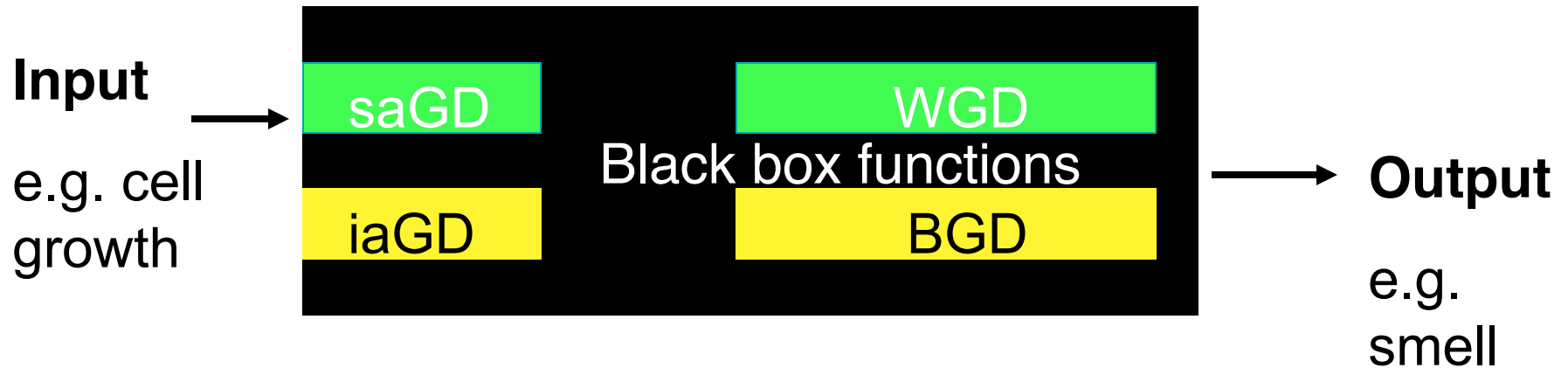
# System level description: precursor production



WGD: Wintergreen Generating Device  
BGD: Banana Generating Device

saGD: salicylic acid Gen Dev  
iaGD: isoamyl alcohol Gen Dev

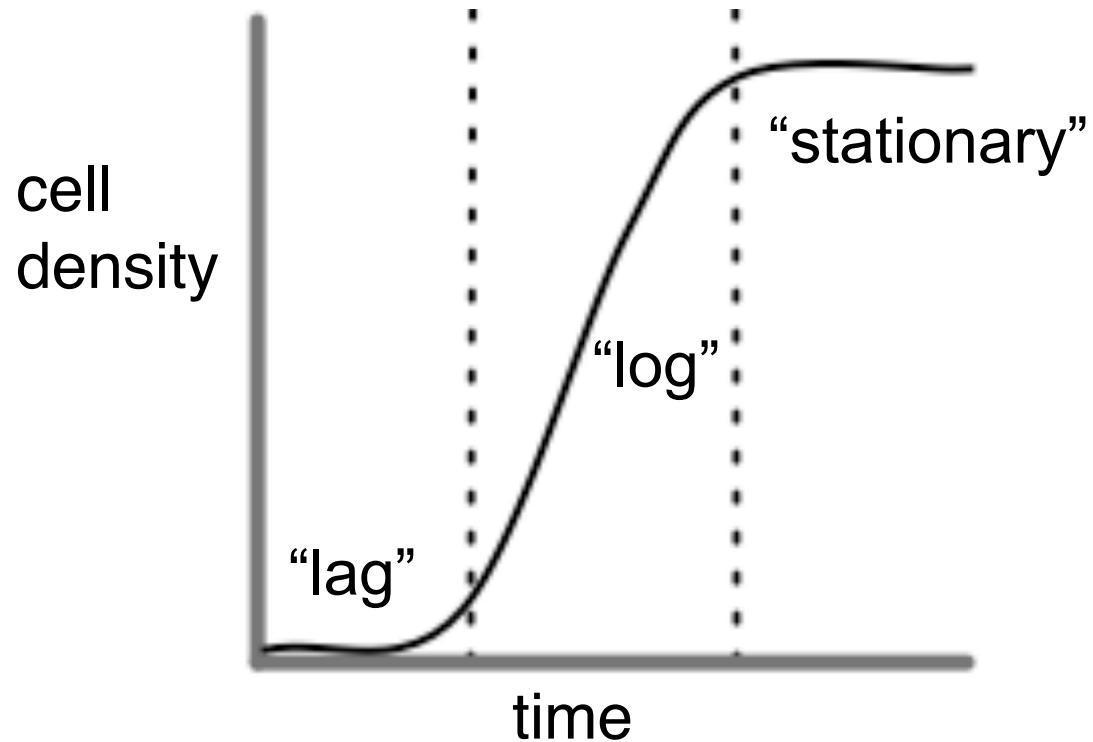
# System level description: precursor production



WGD: Wintergreen Generating Device  
BGD: Banana Generating Device

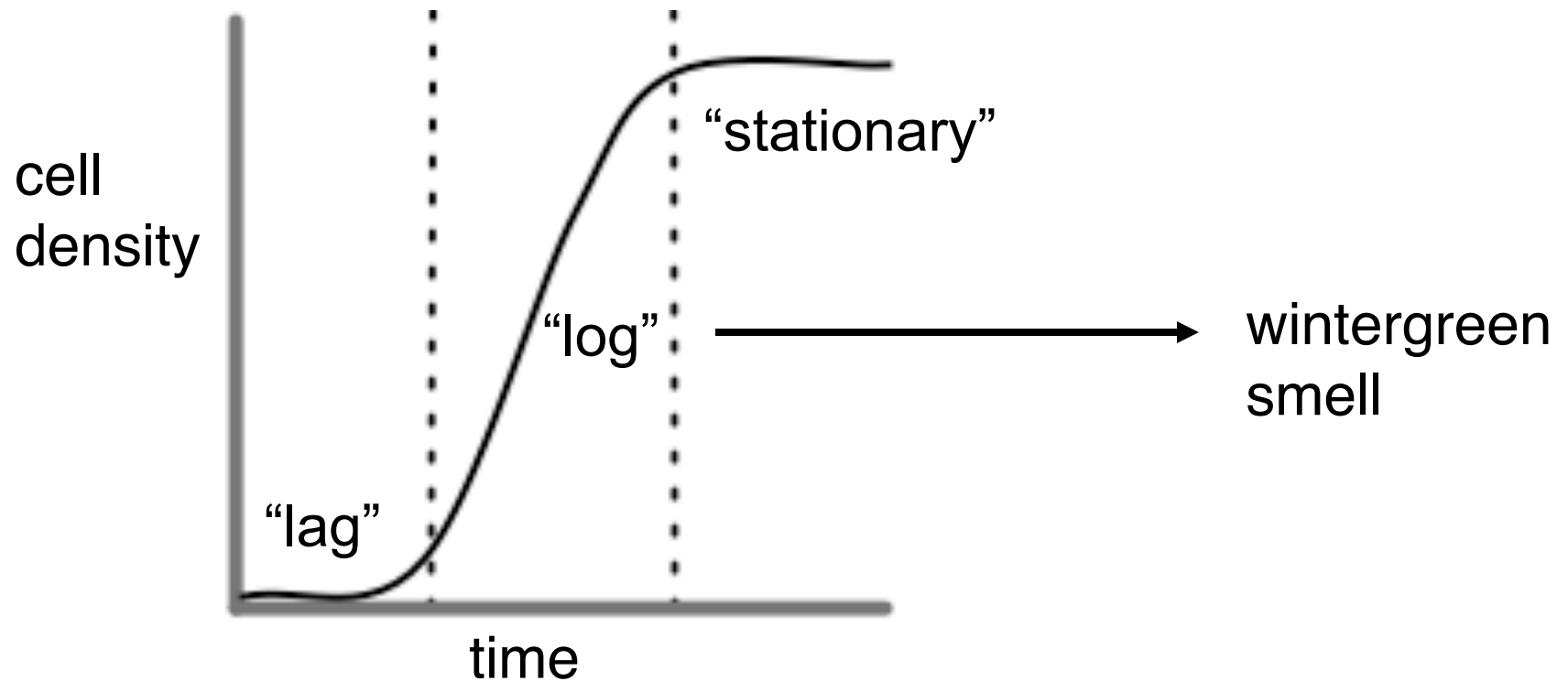
saGD: salicylic acid Gen Dev  
iaGD: isoamyl alcohol Gen Dev

# System level description: growth regulation

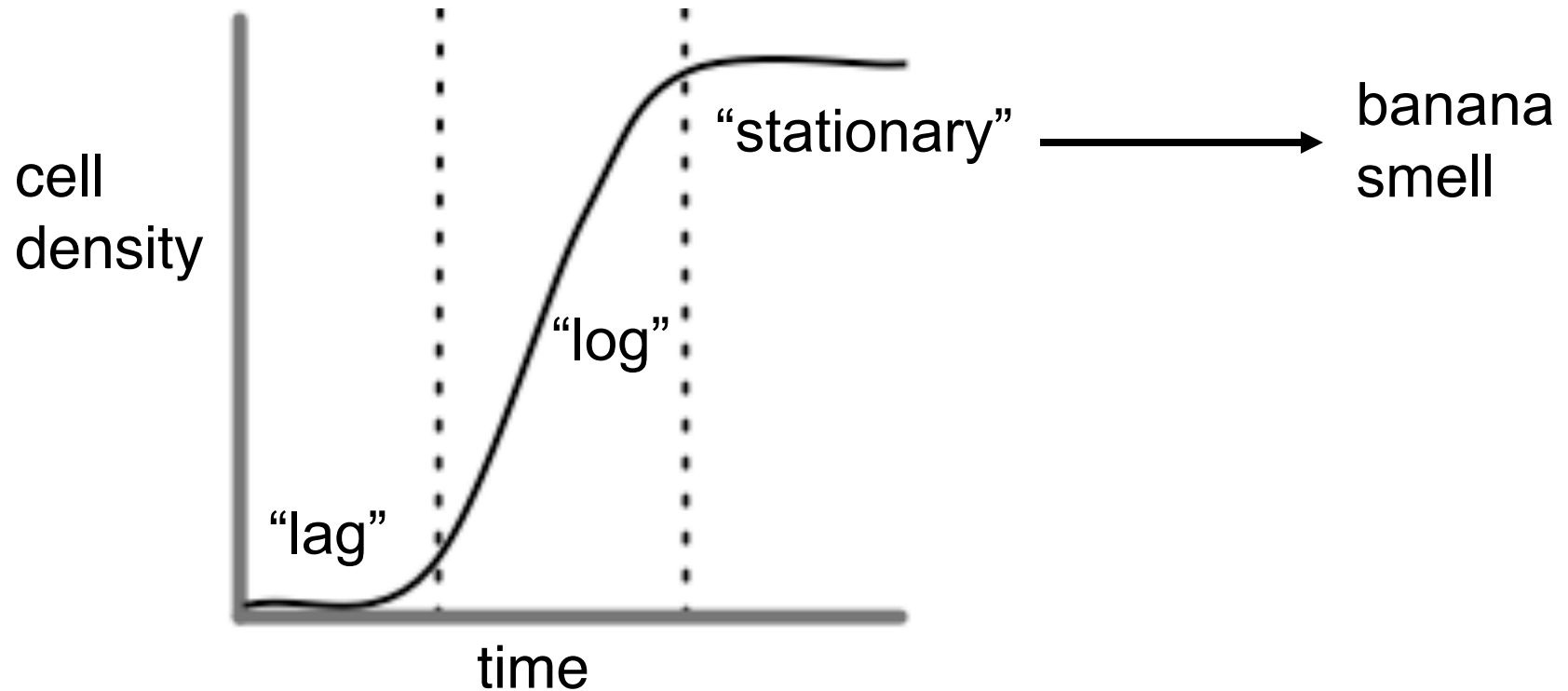




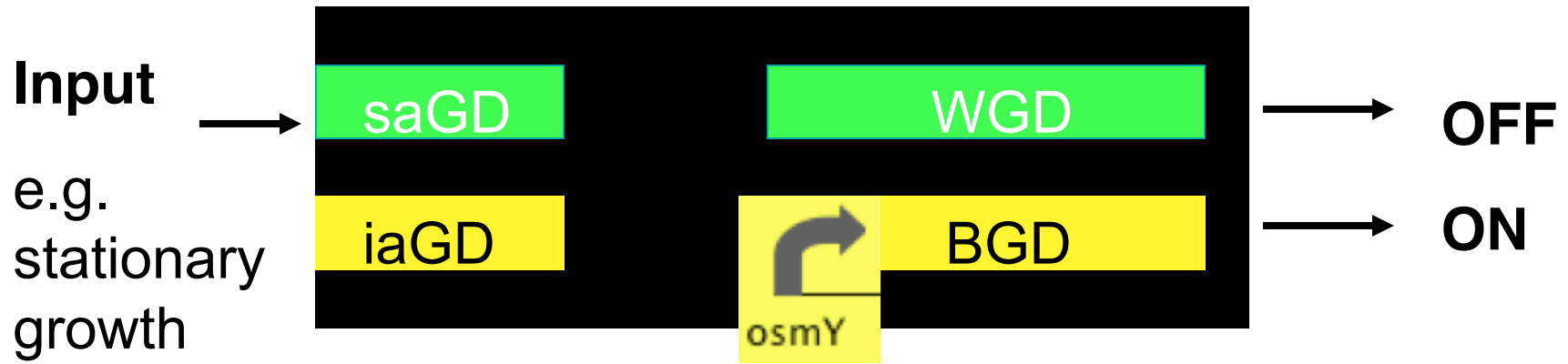
# System level description: growth regulation



# System level description: growth regulation

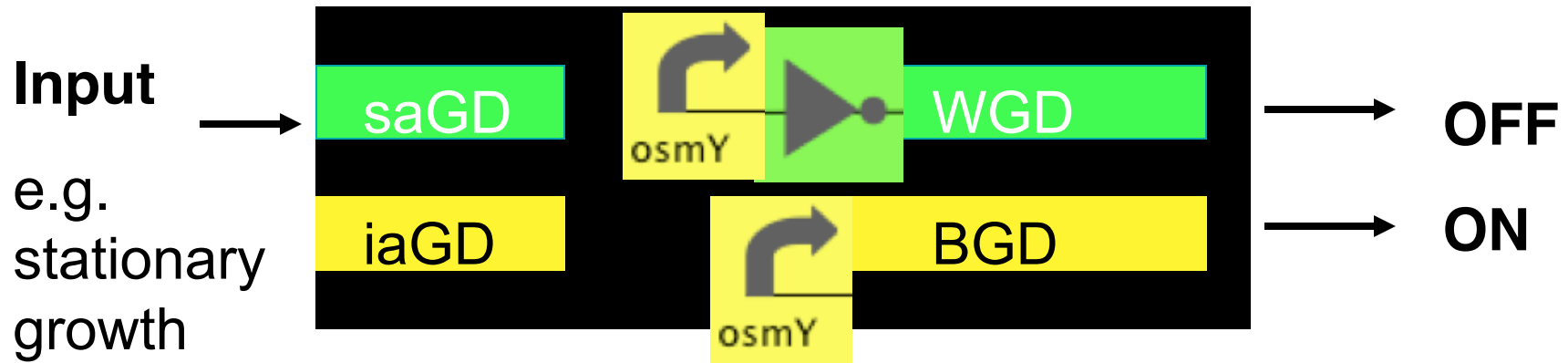


# System level description: growth regulation



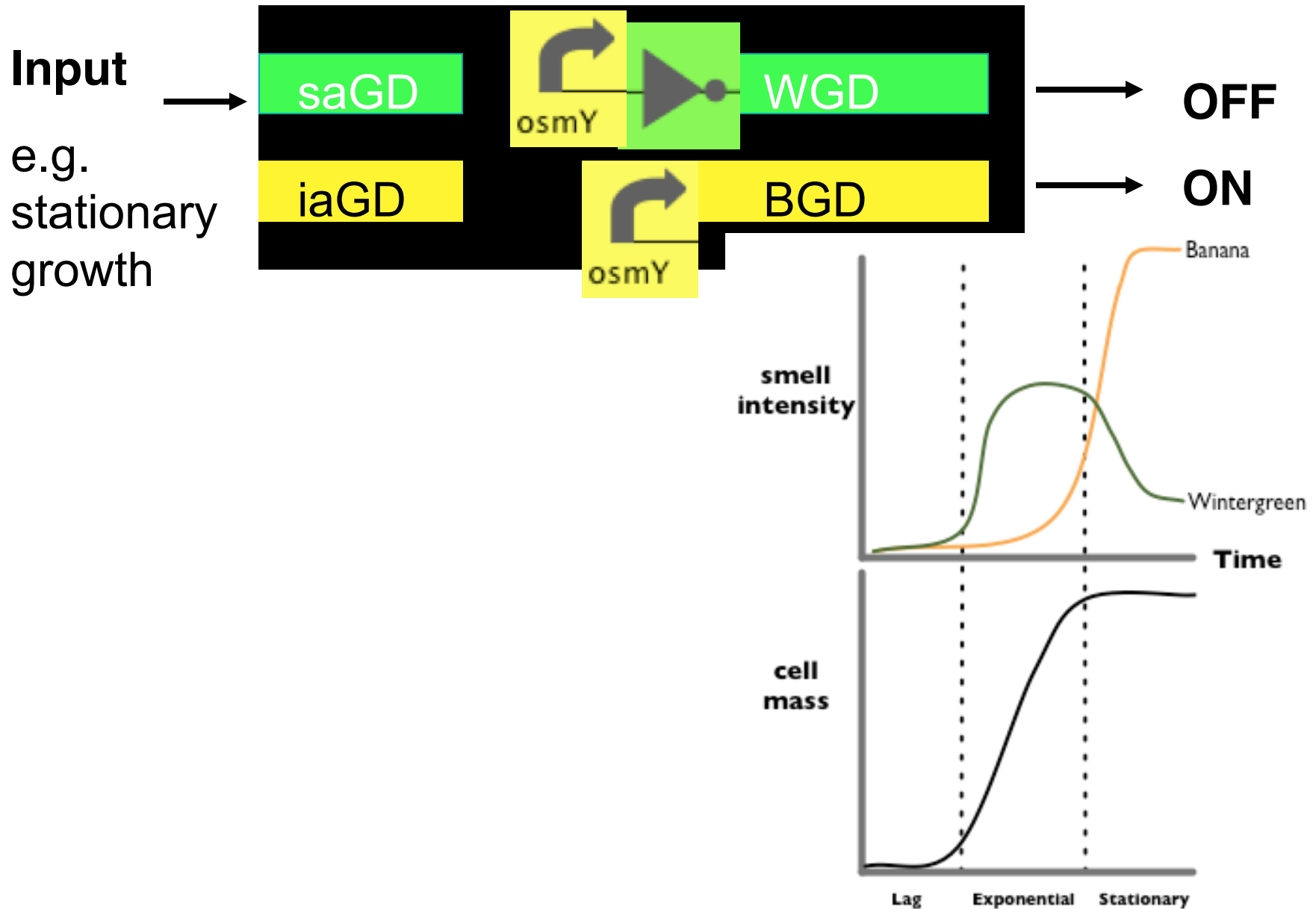
OsmY is a promoter that is only active during stationary phase

# System level description: growth regulation

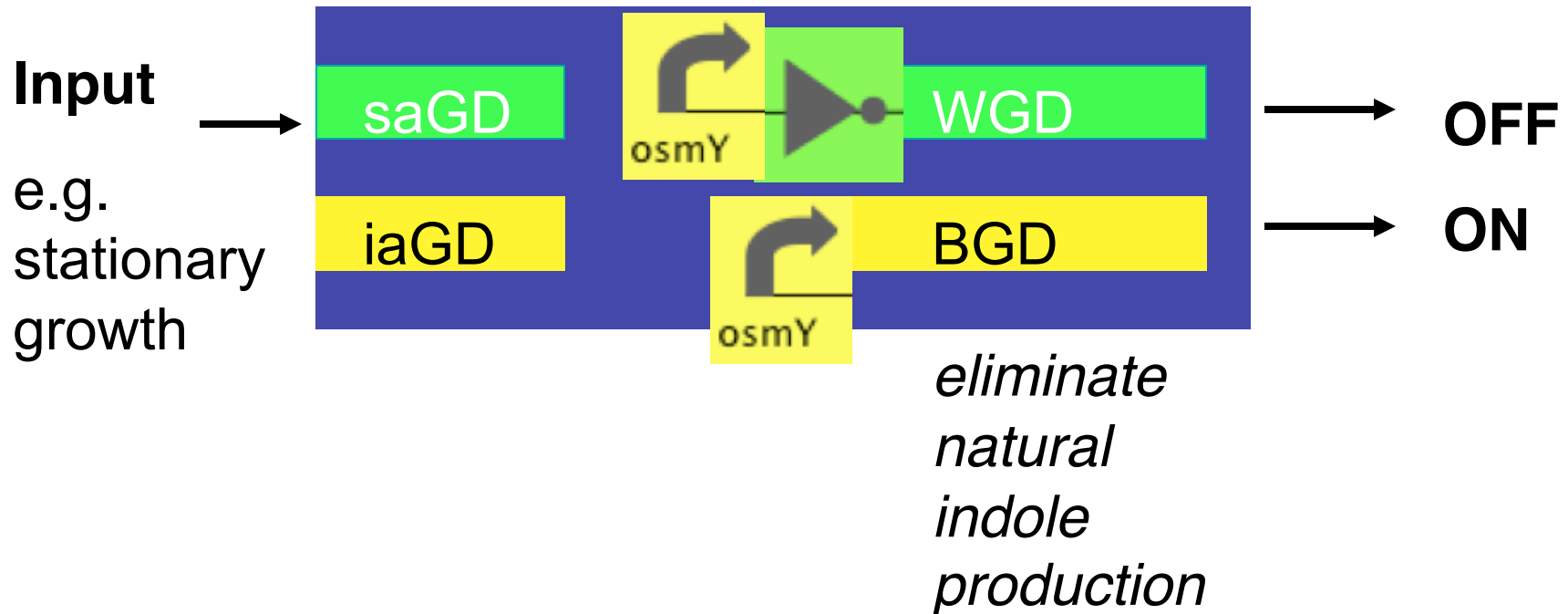


	Stationary phase	Log phase
OsmY	1	0
OsmY+ inverter	0	1

# System level description: growth regulation

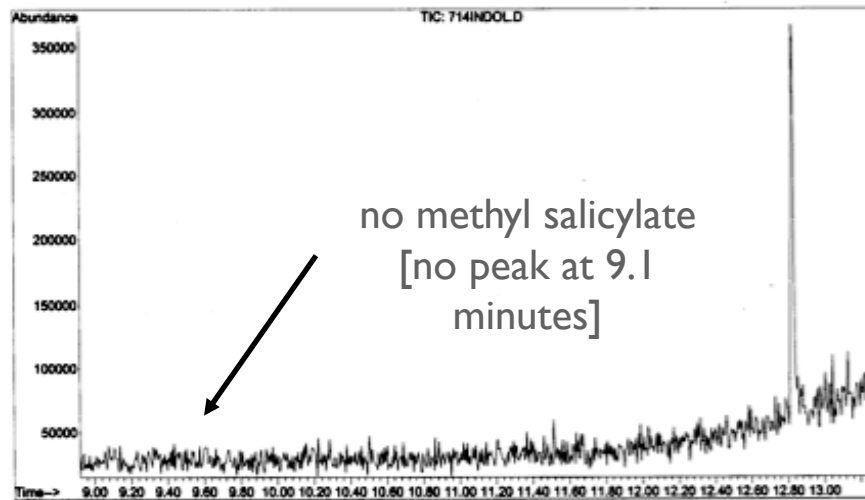


# System level description: Chassis modification

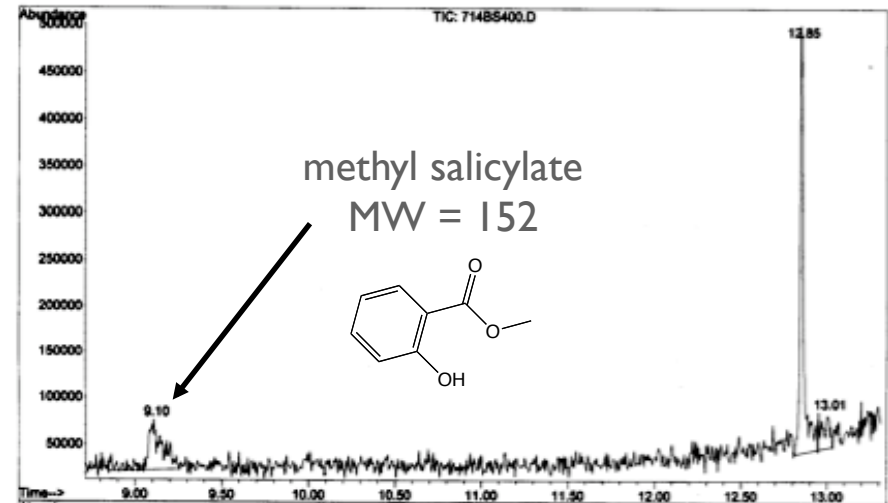


# System level test: gas chromatographs

*E. coli*



*E. coli* + precursor (SA)  
+ WGD



# System level test: uninformed experimental subjects??

