

Low-mutation-rate, reduced-genome *Escherichia coli*: an improved host for faithful maintenance of engineered genetic constructs

Csörgő B, Fehér T, Tímár, Blattner FR, Pósfai G.  
*Microbial Cell Factories* (2012), 11:11.

Presented by Queenie Chan

April 18, 2012

# Background

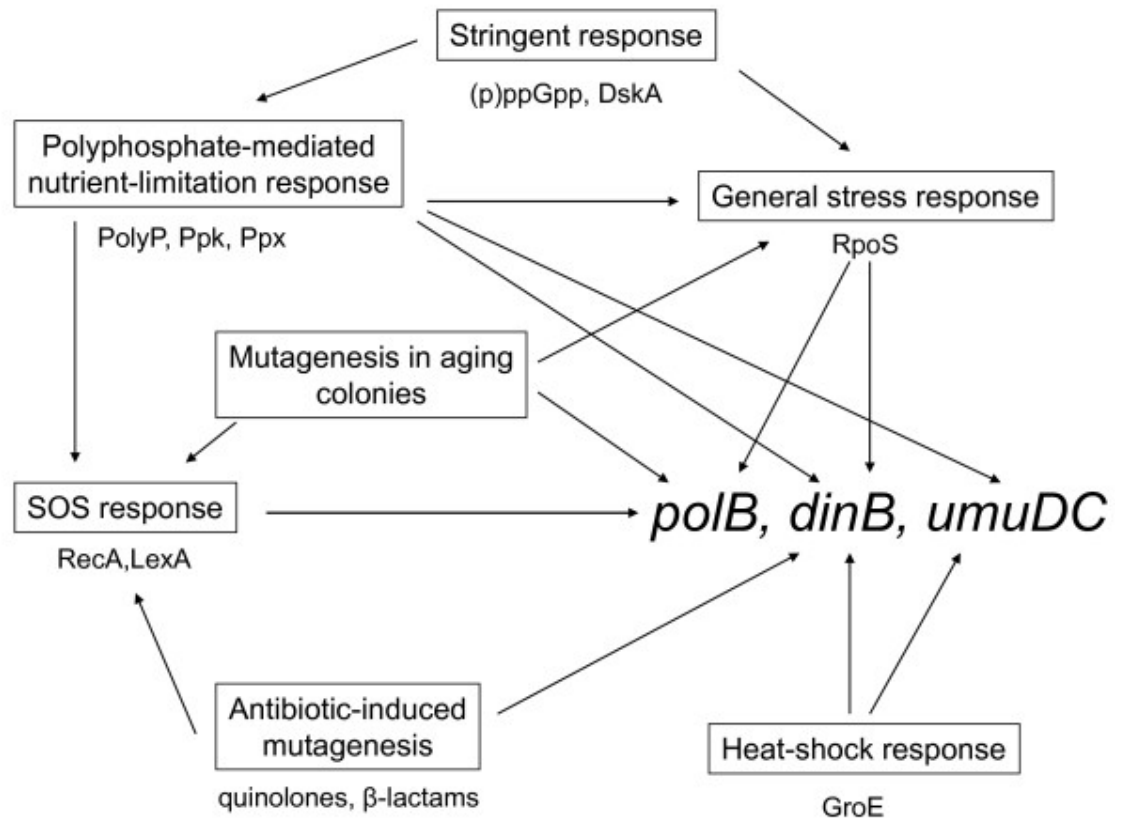
## Genetic variation

- In nature: leads to evolution & survival of the fittest
- In lab conditions: not favorable, can lead to unwanted genotypic and phenotypic alterations

# How do mutations arise?

- Stress → SOS response
  - DNA polymerases: can bypass damaged sites and stalled replication forks; create mutations

- Pol II
- Pol IV
- Pol V



# Goal

- Create chassis that allows stable production of growth-inhibiting biomolecules for applications in synthetic and molecular bio
- Why growth-inhibiting biomolecules, specifically?
  - Mutants usually positively selected for

# Project

- MG1655: wild-type *E. coli* strain
- MDS42: reduced genome *E. coli* strain
  - Genes irrelevant for lab applications (such as insertion sequences) deleted

- I. Modifying MDS42 by creating variants that are more genetically stable
- II. Evaluated variants under stressful conditions
- III. Evaluated variants transformed with toxic-product-producing gene

# Creating Variants

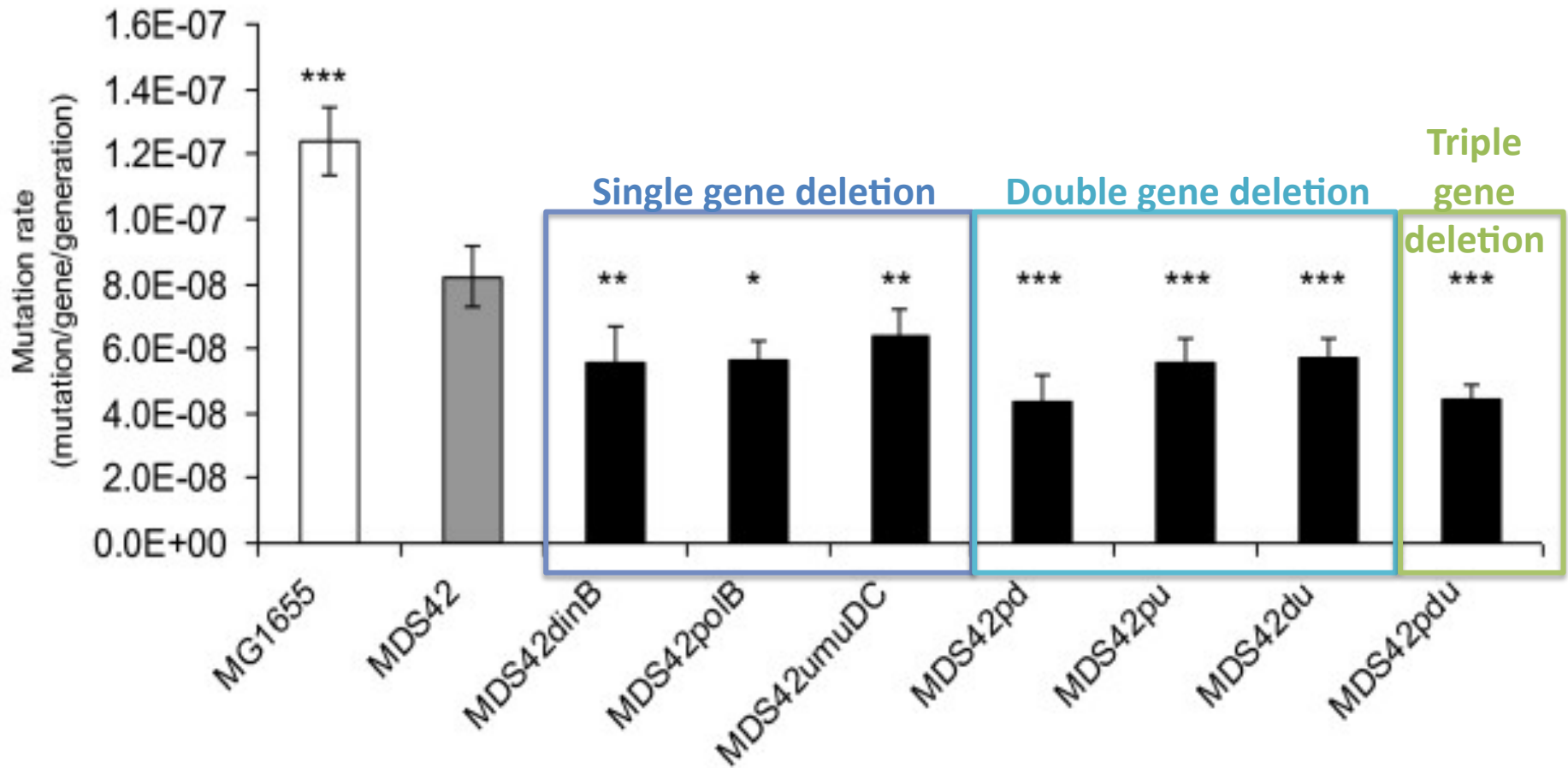
Measuring mutation rates of variants

Polymerase : gene

Pol II : *polB*

Pol IV : *dinB*

Pol V : *umuDC*

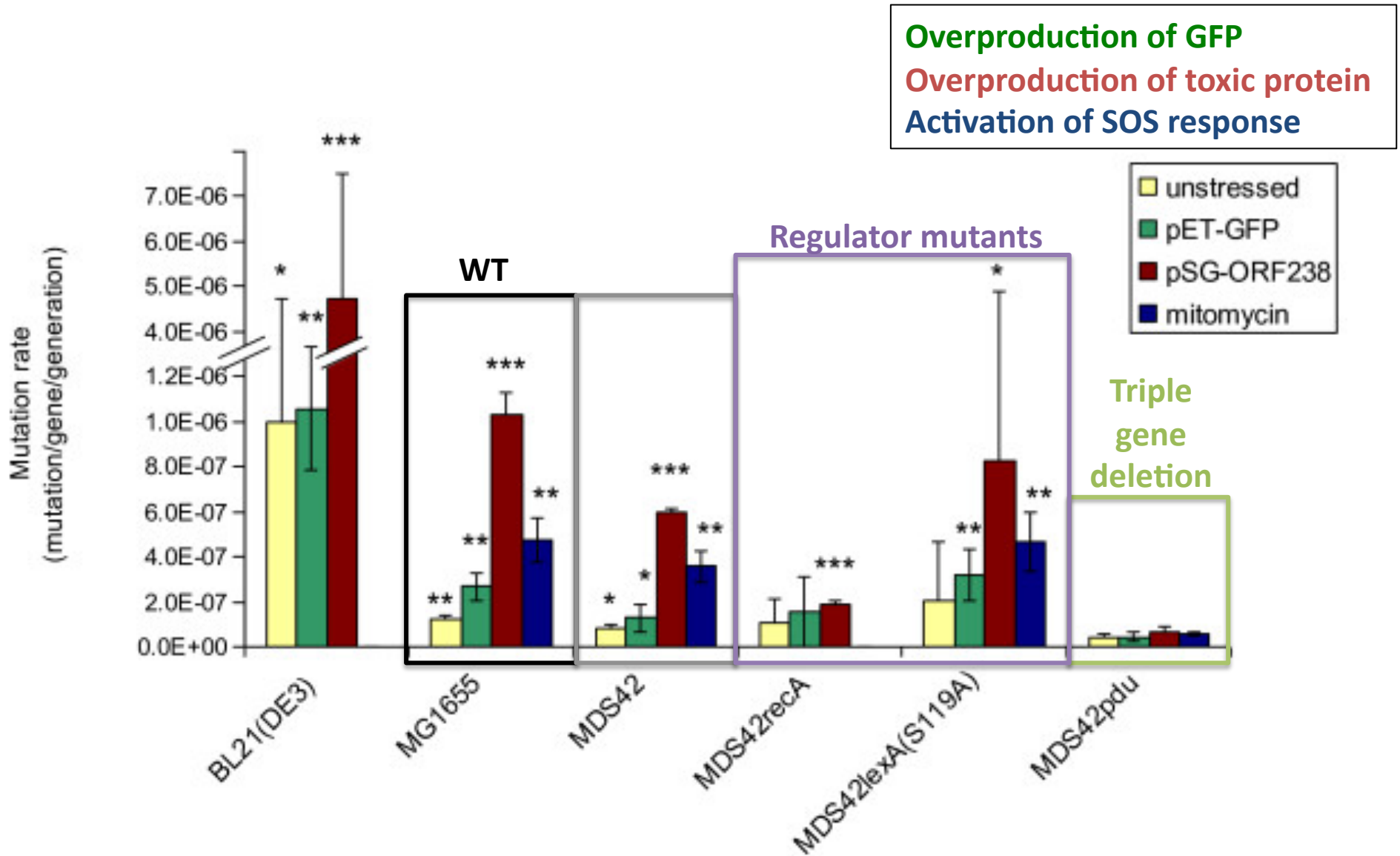


\*  $p < 0.05$   
0.001

\*\*  $p < 0.01$

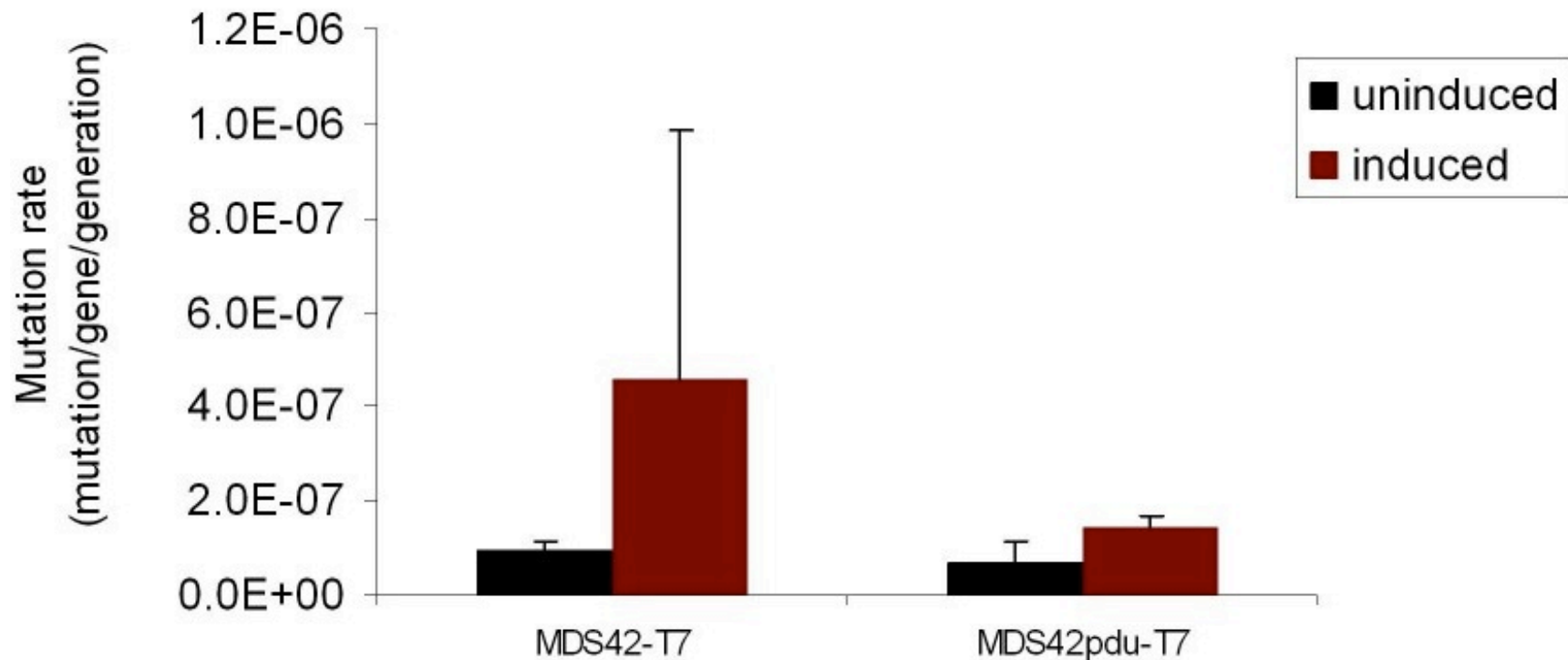
\*\*\*  $p <$

# Evaluating under Stressful Conditions



# Evaluating with Toxic Protein Gene

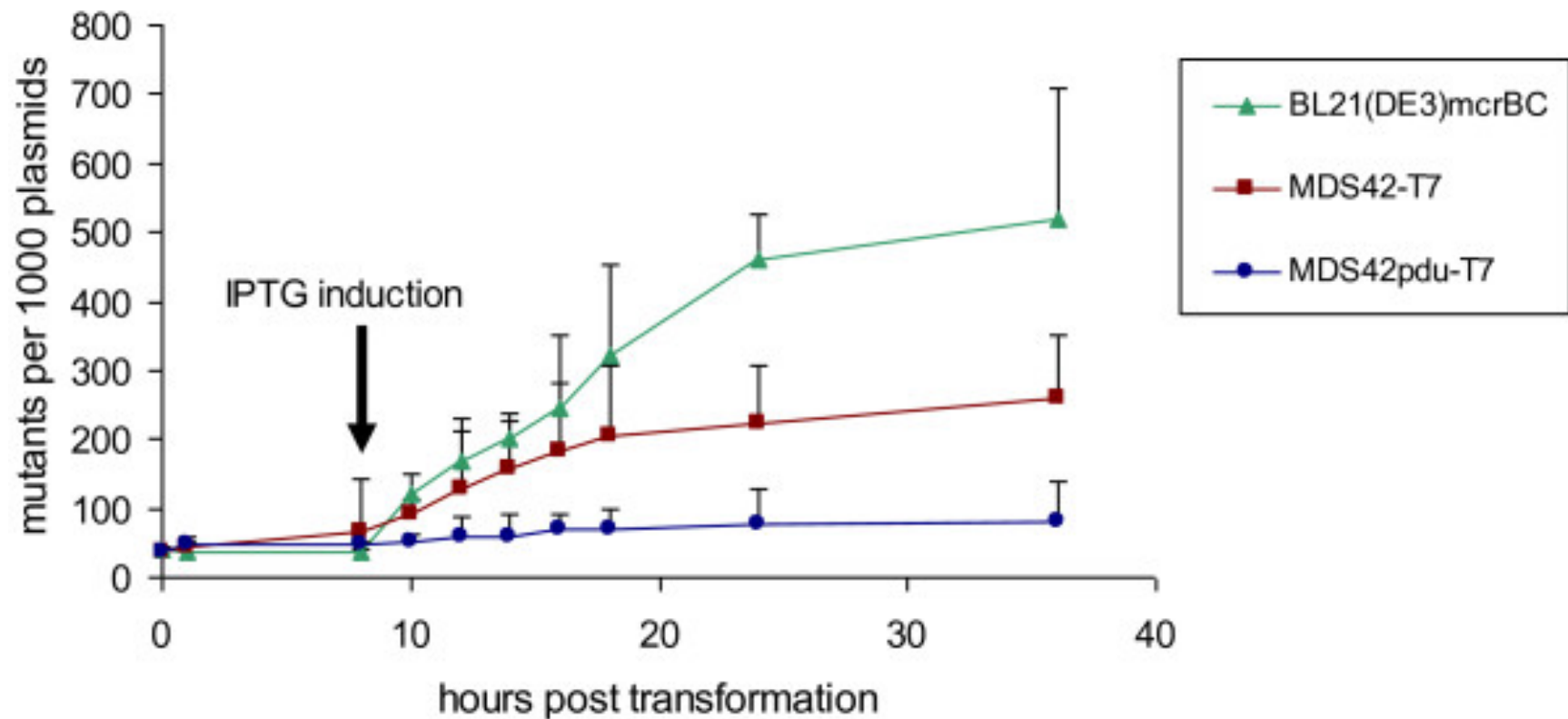
pSin32 + { BL21(DE3)mcrBC  
MDS42-T7  
MDS42pdu-T7





# Test with Toxic Protein Gene

Measuring number of mutants in different strains over time



# Conclusion

- Eliminating 3 polymerases involved in SOS response significantly decreases mutation rates
- MDS42pdu most genetically stable variation of MDS42
  - Lowest rate of mutation in response to:
    - Stressful conditions
    - Production of toxic products

# Significance

- Developed chassis that is able to stably produce growth-inhibiting biomolecules
- Applications:
  - Synthetic & molecular biology
  - Biotechnology
  - Cloning
  - DNA therapeutics

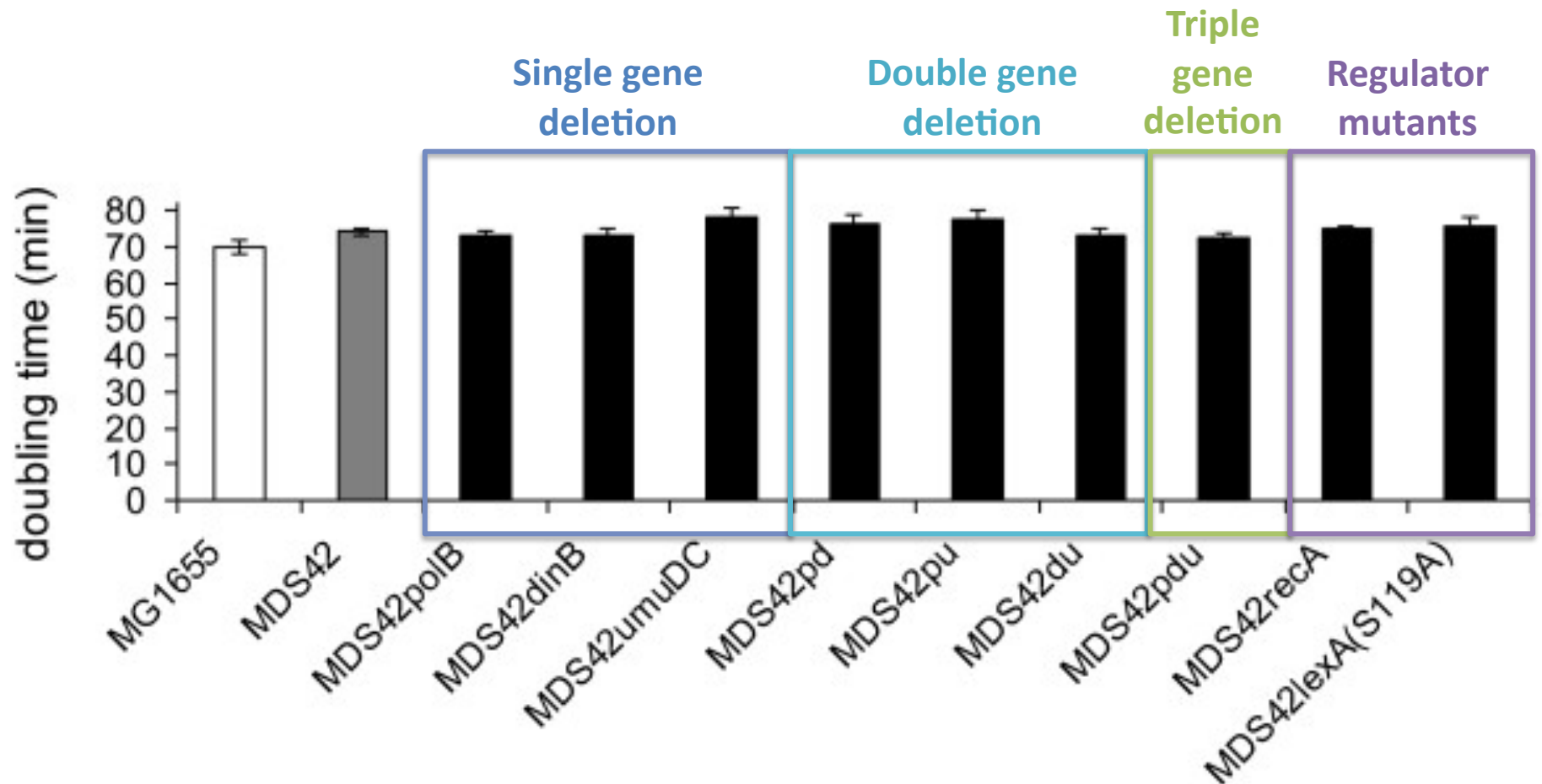
# Concerns

- Explanation for MDS42pd's (double gene deletion) slightly lower mutation rate than MDS42pdu (triple gene deletion)
- Explanation for difference in MDS42lexA (S119A) and MDS42recA (regulator mutants)'s reaction to stress
- Inclusion of BL21(DE3)

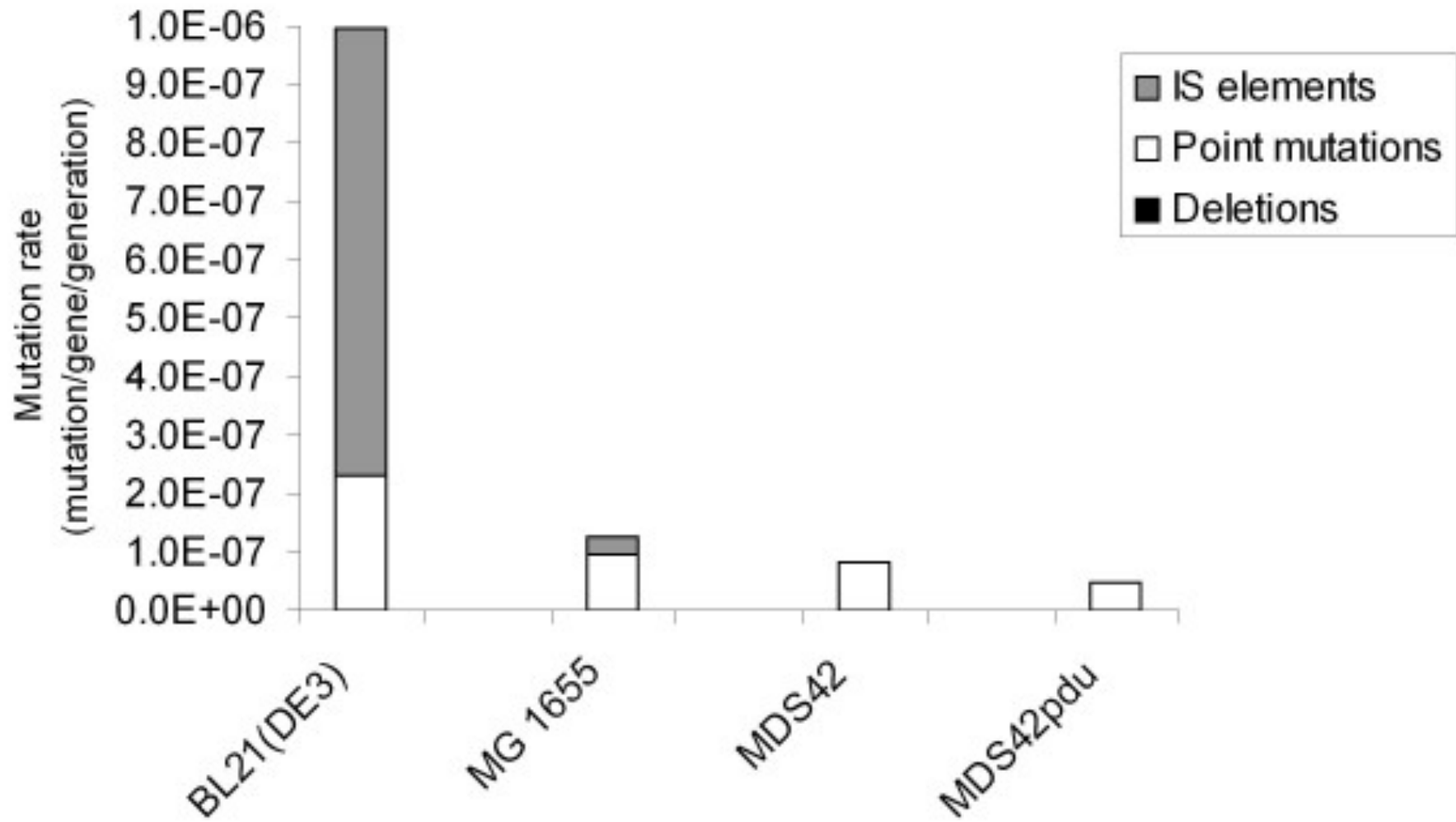
Questions?

# Supplementary Slides: Creating Variants

Verifying that variations do not affect normal cell growth



# Supplementary Slides: Characterizing Types of Mutations



# Supplementary Slides: Checking IPTG Inducibility of strains

pSin32 + { BL21(DE3)mcrBC  
MDS42-T7  
MDS42pdu-T7

