

Introductory statistics for biological engineers (+ligation)

slide 2 here - just a
supplementary note

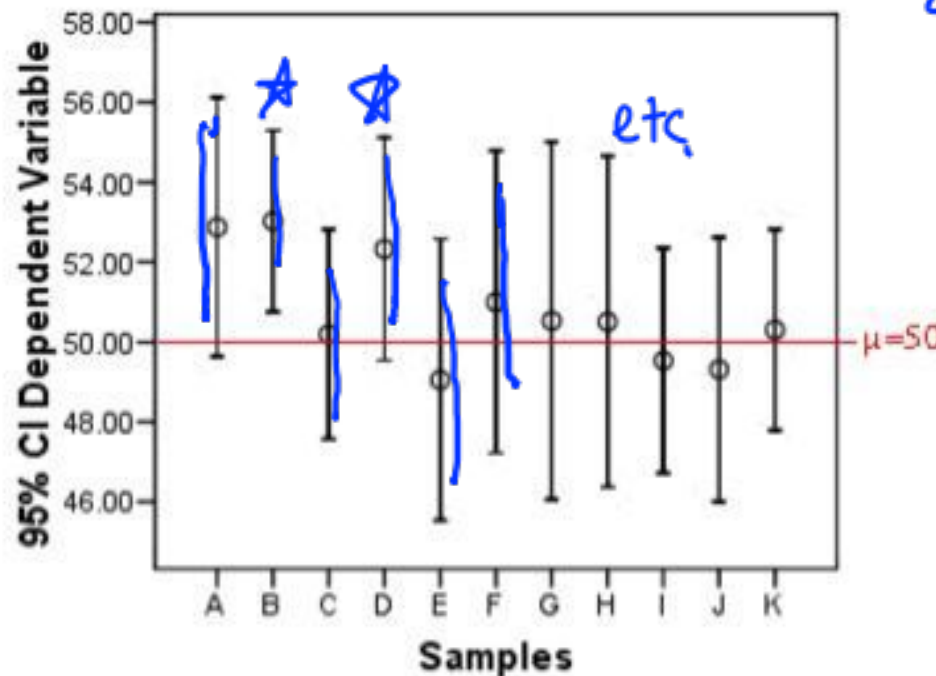
Module 1, Lecture 4

slide 3 here - corrected
(for partial digest)
plus extra notes

20.109 Fall 2014

Core content developed by: Bevin Engelward
Additional context/framing by: Agi Stachowiak
A few tweaks by: Zac Nagel (Samson lab postdoc)

Illustrating CI principle



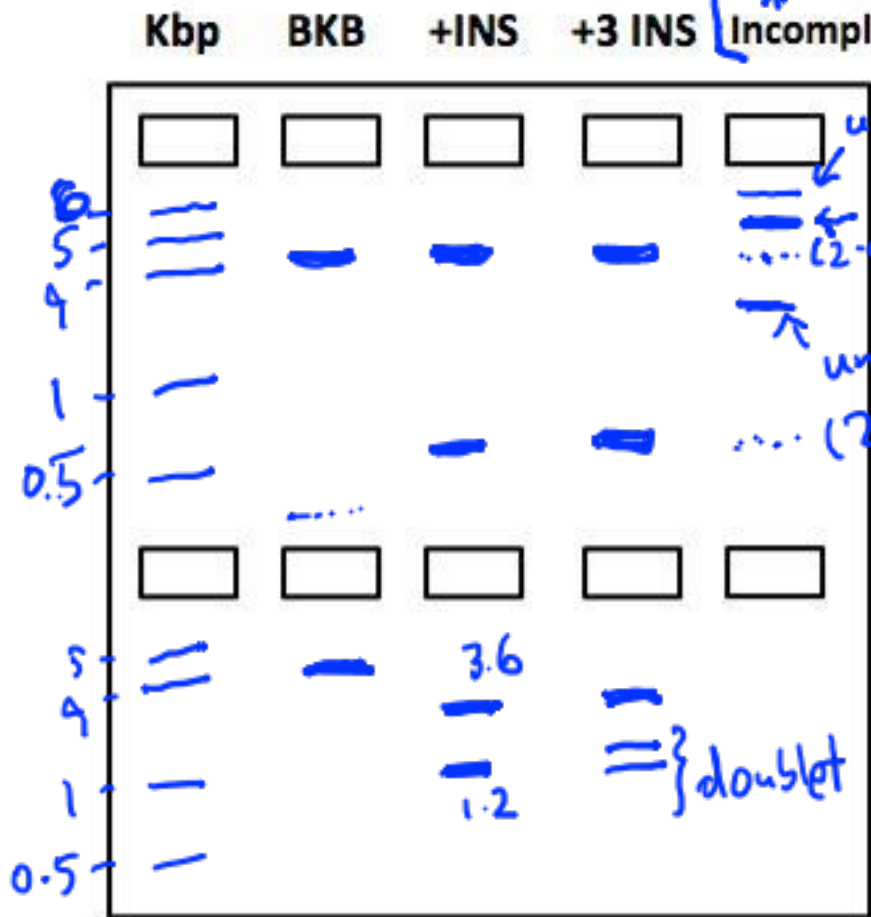
90% CI bar
doesn't extend
as far, and
thus CI will
"miss" true
mean, μ , more
often!
(compared to
the 95% CI)

Figure 2: Confidence intervals from 11 samples drawn from a population with a mean of 50.

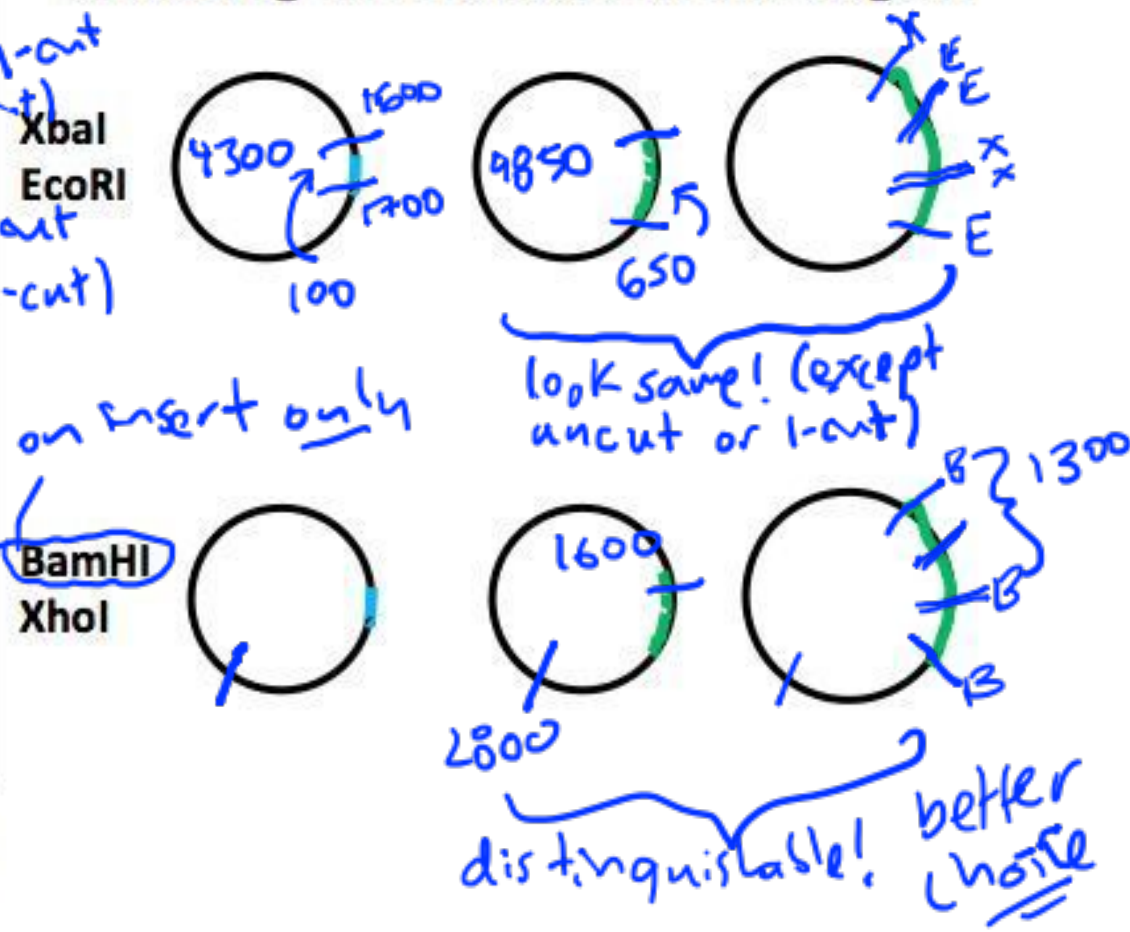
http://www.psych.utah.edu/gordon/Classes/Psych_6500/Stats%20and%20Params/ConfidenceIntervaloftheMean.pdf

M1D5 diagnostic digest preview

[of B+I, specifically, mostly uncut (two forms) and single digest]



Choosing restriction sites for digest



The only way to identify B + 3I!