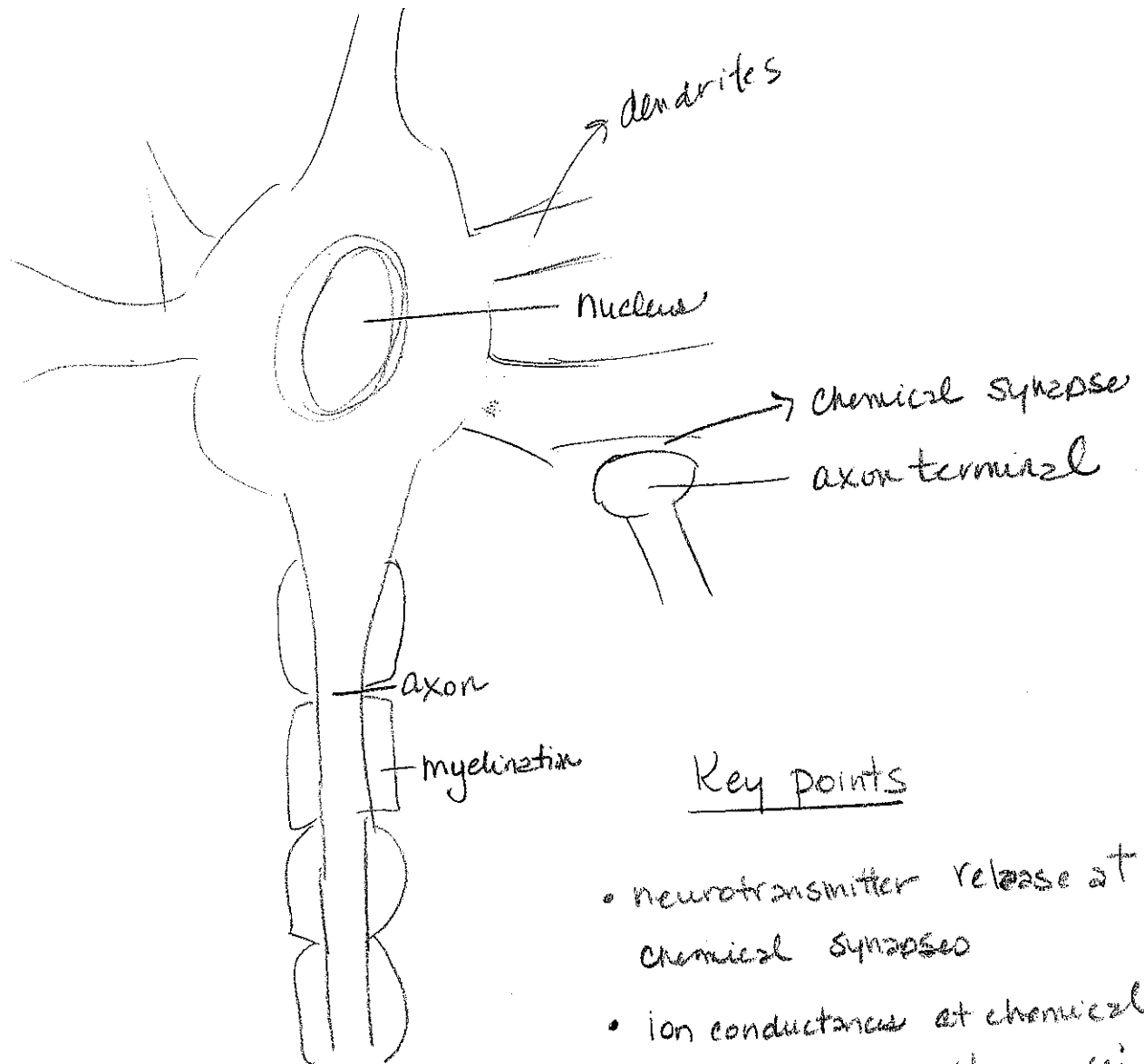


Anatomy of a Neuron

★ Figure 1.1 of Purves, p 2



Key points

- neurotransmitter release at chemical synapses
- ion conductances at chemical synapses change the cell's membrane potential, V_m
- Δ 's in V_m may initiate action potentials that propagate through the axon.

Membrane Potential

- V_m is the electrical potential difference across the cell membrane. The sign reflects the inside absolute potential relative to the outside of the cell

- The cell's lipid membrane \rightarrow **insulator**

- **Resting V_m** : in absence of input $V_m =$ negative often ~ -50 or -60 mV but varies by cell type

- V_m is set up by charged molecules

Na^+, K^+, Cl^-, Ca^{++}

$Na^+ \approx 140$ mM
 K^+ Cl^- Ca^{++}

$Na^+ \sim 140$ mM
 $K^+ \sim 5$ mM
 $Cl^- \sim 110$ mM
 $Ca^{++} \sim 1$ mM

$Na^+ \sim 10$ mM K^+ Cl^- Ca^{++}

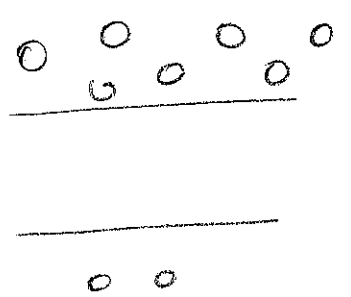
open Proteins $-$ $|$ $+$ other anions $-$
 net - charge

$Na^+ \sim 5$
 $K^+ \sim 140$ mM
 $Cl^- \sim 5$
 $Ca^{++} \sim 0.1$ μ M

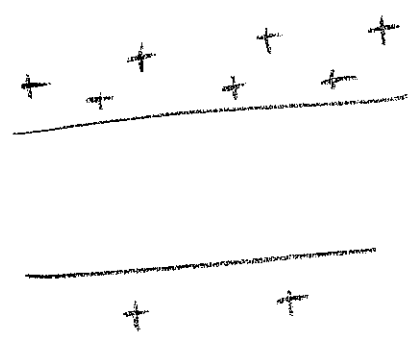
- **Electrochemical Gradients** are stored energy.
 are maintained by active ion pumps (cells must do work to create these)

- **Equilibrium Potential** of an ion.

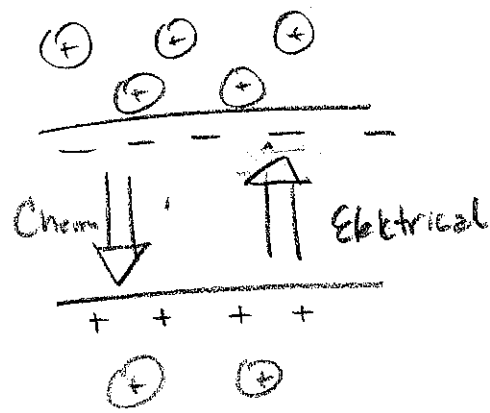
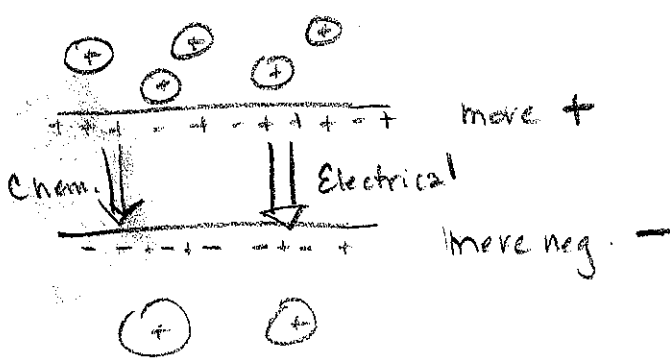
Concentration Gradient



Electrical Gradient



Charged Molecule

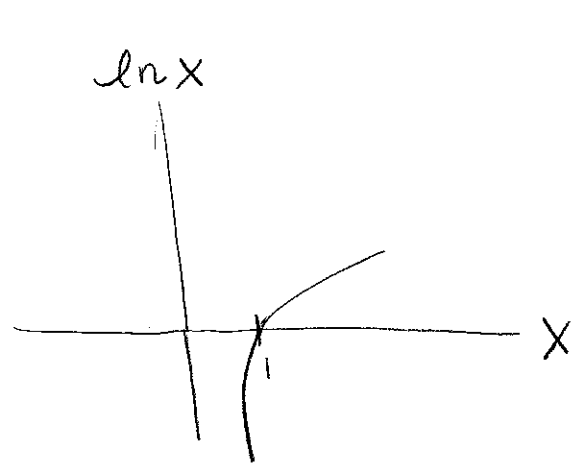


If a channel were to open for that molecule which direction would the charged ion flow?

Equil. Pot: is the V_m for which the net flow of charged ion is 0. The Chemical gradient is perfectly balanced by the electrical gradient of the membrane potential.

$$E_{ion} = \frac{RT}{zF} \ln \frac{[ion]_{out}}{[ion]_{in}}$$

$$E_{K^+} = \frac{RT}{(+1)F} \ln \left(\frac{5mM}{140mM} \right)$$



↪ < 1 so $E_{K^+} = -$

$\ln x$ for $x > 1$ is +
for $x < 1$ is -

z could be + or -

E_{Na^+} is Positive.

$(V_m - E_{ion})$ therefore reflects the driving force on the ion when a channel for that ion opens

Ion conductances, g

$$g = \frac{1}{R} \text{ units in Siemens, } S.$$

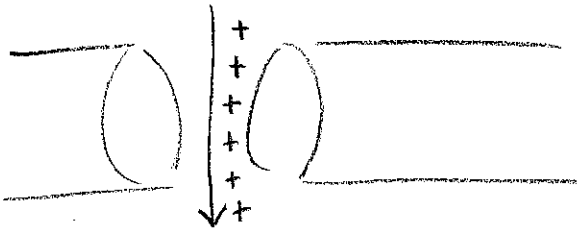
protein channels create selective conductances; ie allow selective flow of ions across the membrane

- direction + magnitude of the flow depends upon $V_m - E_{ion}$.

if $V_m = E_{ion}$, then no net flow occurs.

- Because ions carry charge, their flow is a current and therefore changes V_m .

note: takes relatively few ions to move to change V_m .



An inward current : cations in or anions out

- ion channels / conductances may be gated by chemicals or V_m itself.

- probability that the channel is open can be a function of V_m or $Conc.$

Neurotransmitter Induced Conductances st

a Chemical Synapse, figure 5.3 pg 88

Excitatory - $\boxed{Na^+, K^+}$ ^{sometimes} Ca^{++} flow into the cell depolarize, i.e. $\uparrow V_m$

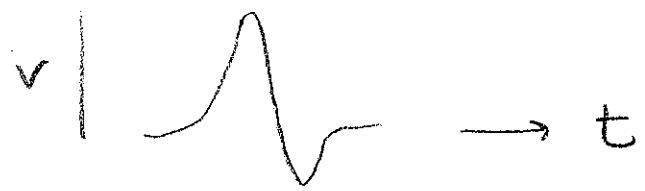
Inhibitory - Cl^- flow into the cell $\downarrow V_m$

- V_m changes due to synaptic currents can generate an action potential via voltage dependent

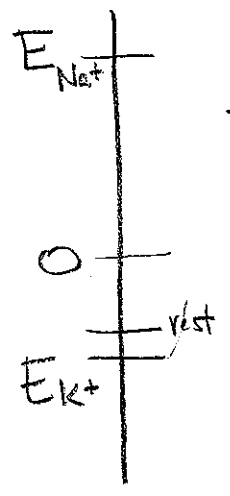
Na^+ + K^+ channels.

Action Potentials

figure 4.3



- at rest Na^+ + K^+ channels are closed.
- depolarization above a threshold induces opening of Na^+ & K^+ channels but Na^+ more quickly
- Na^+ open 1st, Na^+ flows in, $V_m \rightarrow E_{Na^+}$ which is +
- the K^+ channels open, K^+ flows out, + starts to oppose Na^+ current
- Na^+ channels naturally inactivate due to prolonged depolarization
- K^+ current pulls $V_m \rightarrow E_{K^+}$
- K^+ channels close b/c V_m has decreased



- cell returns to rest state

o threshold + a long or short path return to
2 stable state were the 2 features of
our 1st neuronal model

