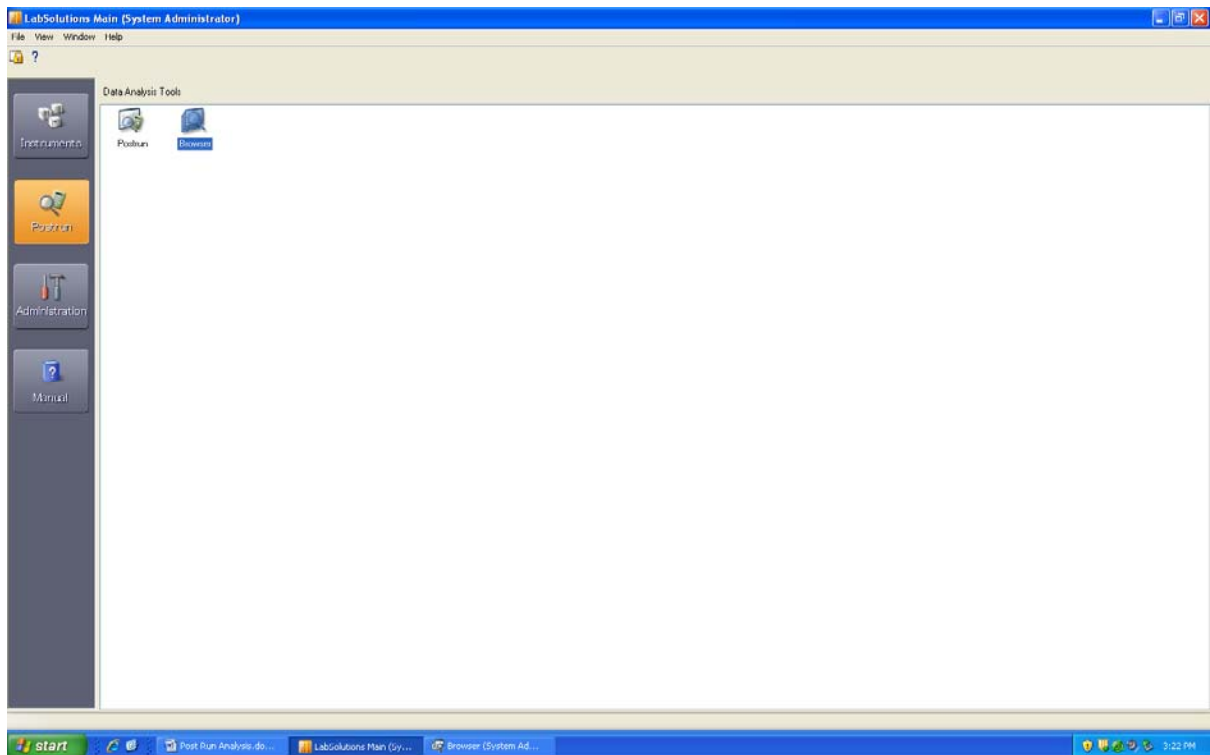


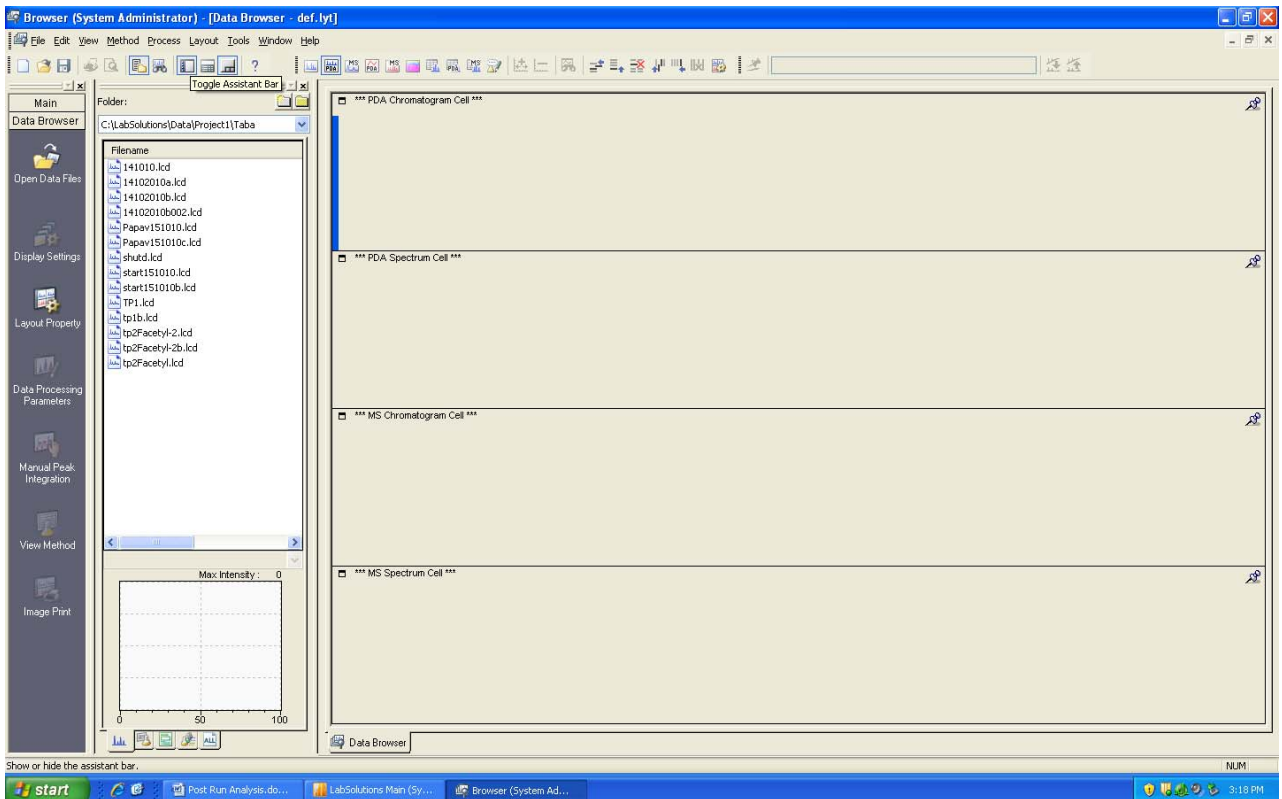
## Post-Run Analysis/Processing

### Basic Post Run Analysis method: Oct 17<sup>th</sup> 2010 by Fargol

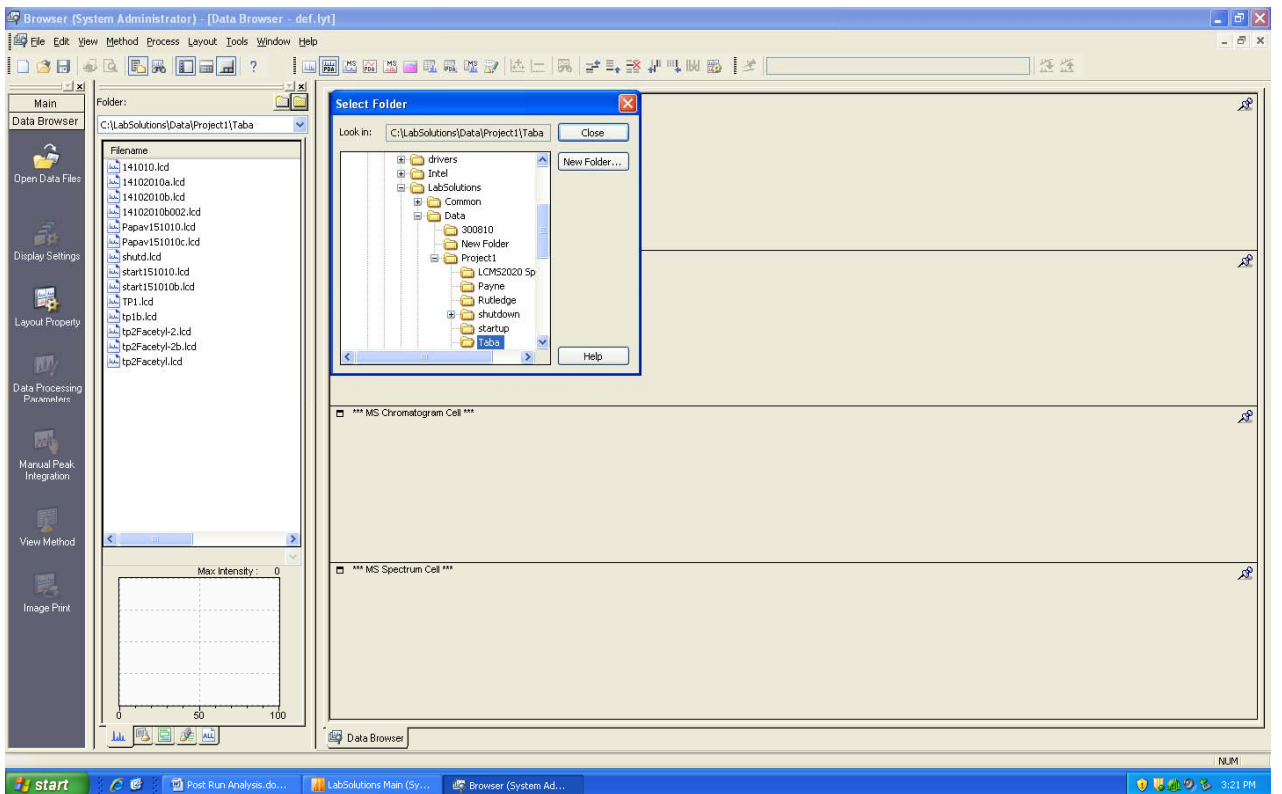
From main LabSolutions window, click Postrun from the left hand side toolbar and double click the Browser icon



Select top cell (here it's the PDA chrom. Cell):

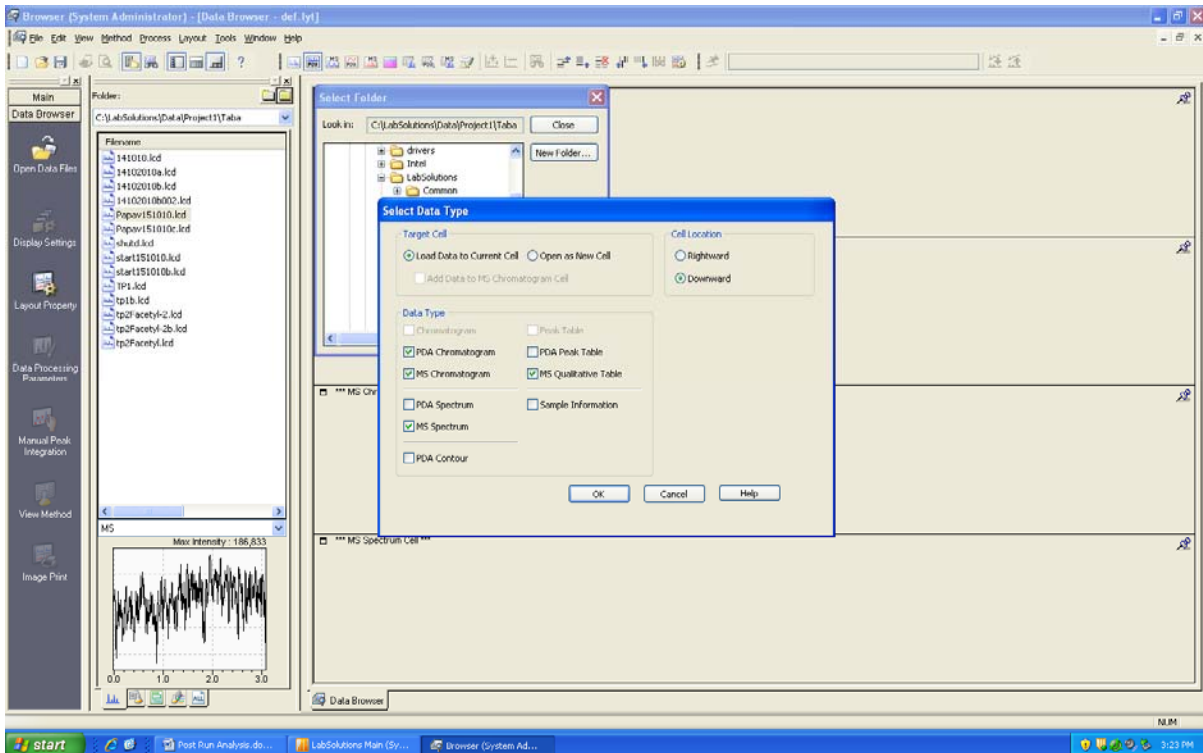


Select file (if it's not in the file toolbar then select the yellow folder by double clicking it (see where the cursor is on the next image) and then select your folder by clicking on it so that your files are visible on the file toolbar above.



Double-click your filename and select data type as in the picture (usually the PDA spec. Is not used so that is not ticked)

& click OK

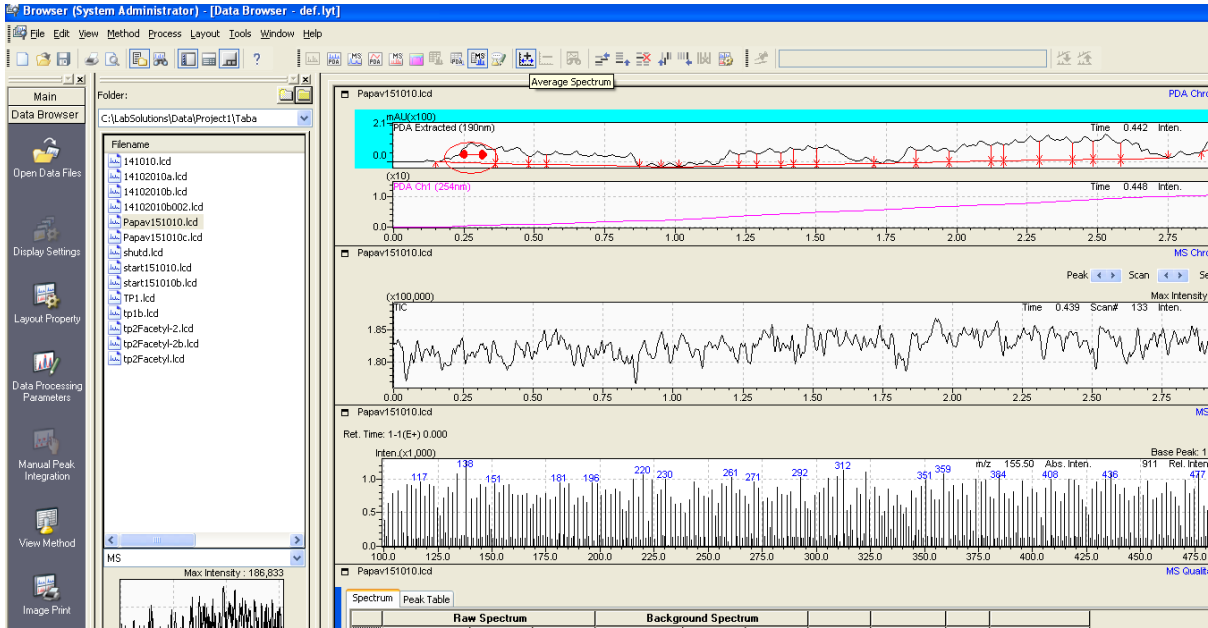


Click 'average spectrum' button depicted in the picture below:

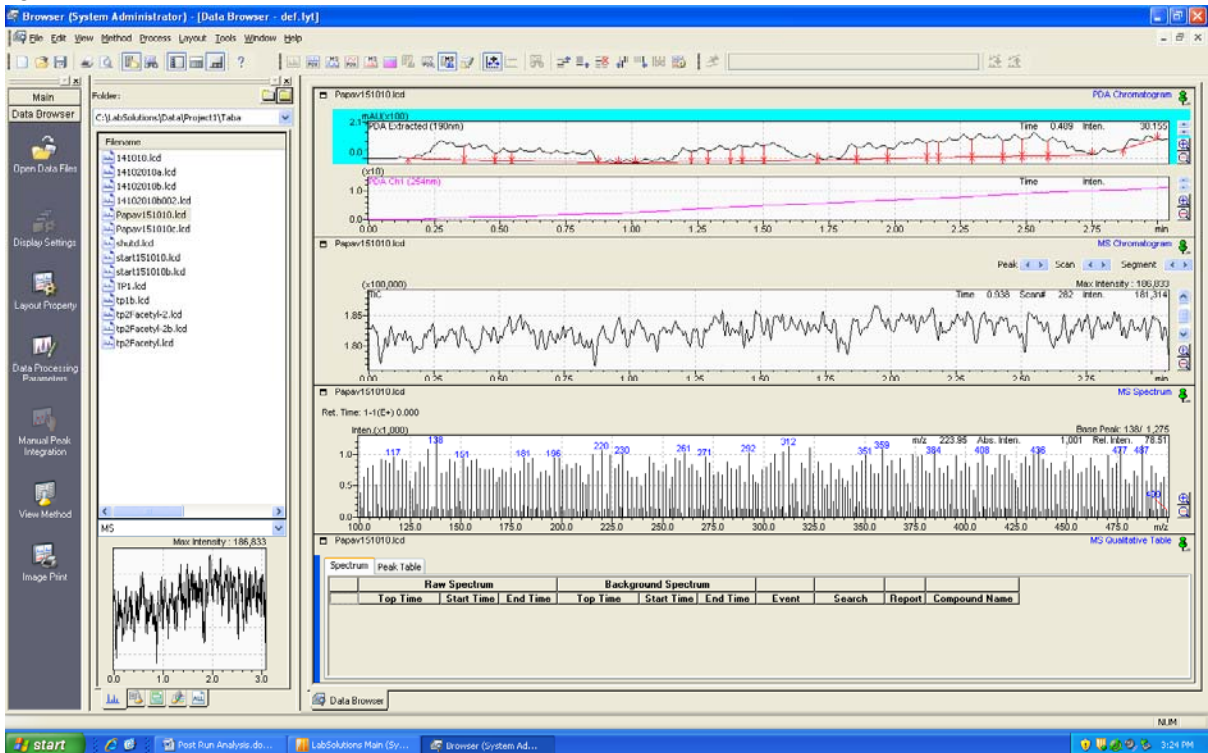


and then select the range in the spectrum which you want to see the ions in (by left clicking and dragging in that region - you can do it for the PDA or the total ion count) .E.g look at the circled red arrow region in the print screen

below:

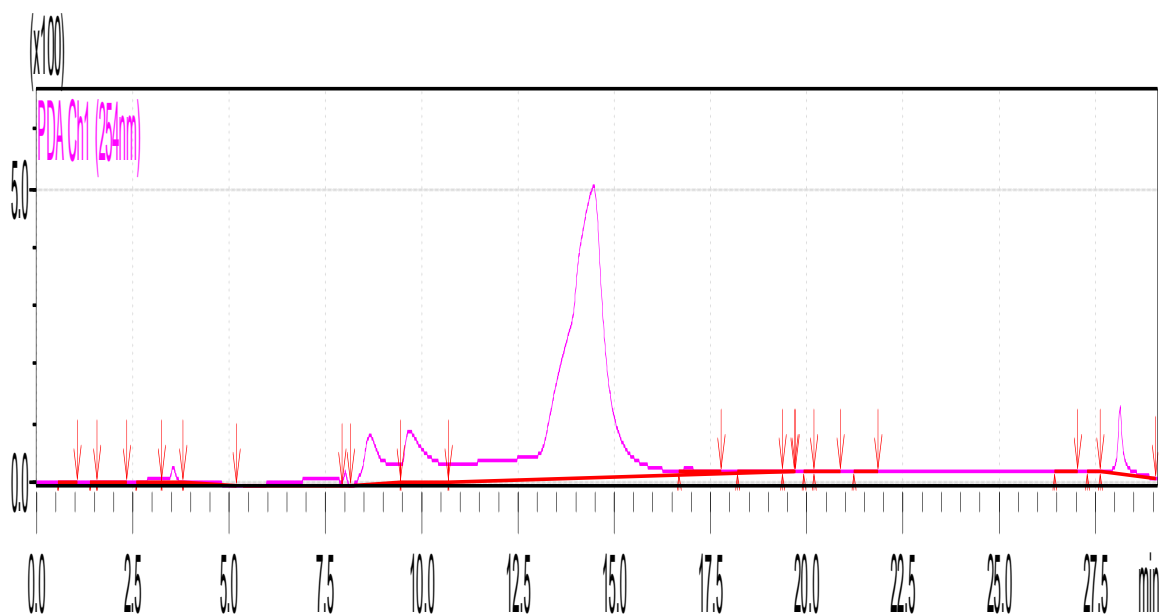


but if you want to look at a different area then you have to click that 'average spectrum' button again.



You can copy the spectrum (by right clicking on the spectrum desired) and paste it in word like this:

E.g see the copied PDA below from Taliesha' run: 151010



## **How to leave the instrument**

If the batch sequence has been created with a shut-down method at the end then this will ensure that the pump flow will go to zero, the uv lamps will shut off, the column oven will turn off and the nebulizer gas will run on the minimum setting.

See Anh's procedure below:

### **LC-MS shutdown steps**

1. From real time batch window, press 'Edit table (Pause)' at the top, followed by 'OK'
2. Right click, select 'add row'
3. Change method file to 'shutdown2' in 'training files' folder (optional: you can also modify sample name and data file name)
4. Click 'Edit table' tab again to resume batch.

If manually switching off machine then reverse the order of the start-up power sequence. Turn off the instrument: reverse order of the starting procedure. Cap or metallic plug must be placed on the mass spectrometer. (usually it's kept in a sleeve on the top of the machine next to the solvents).

25/10/10: Don't turn off the N2 generator to avoid contaminating the source just in case someone forgets to plug the source.

You can also just press the shutdown button on the top of the page and then close the software instead of inserting a shutdown method file if you are not running any samples and it will immediately shutdown everything after that. - F.T