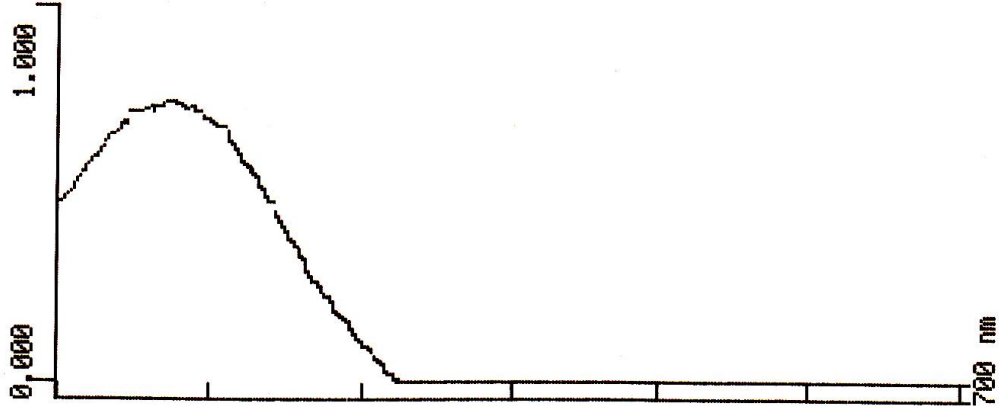


PH : 4.5

SmartSpec (TM) Plus Report  
14:16 11/17/11  
Operator: amira  
Scan Report

start wavelength: 400 nm  
end wavelength : 700 nm

max: 437 : 0.746 AU  
min: 690 : -0.196 AU



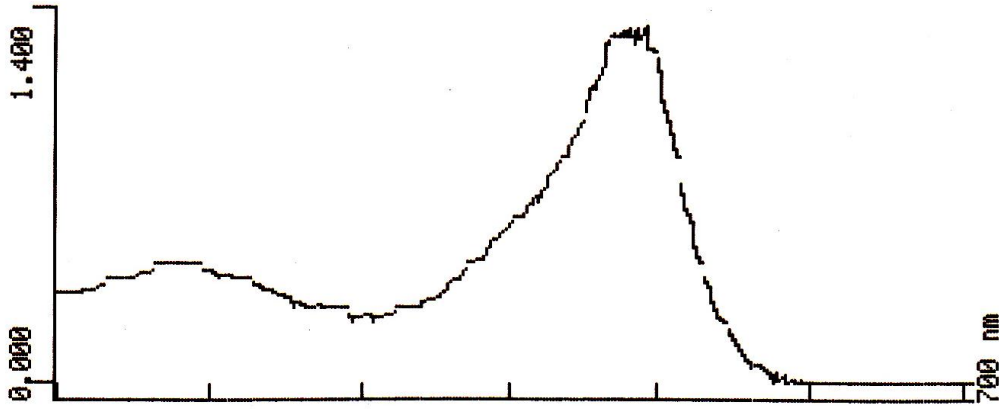
x axis: 50 nm/division

SmartSpec (TM) Plus Report  
14:34 11/17/11  
Operator: amira  
Scan Report

PH = 5.25

start wavelength: 400 nm  
end wavelength : 700 nm

max: 596 : 1.322 AU  
min: 685 : -0.048 AU



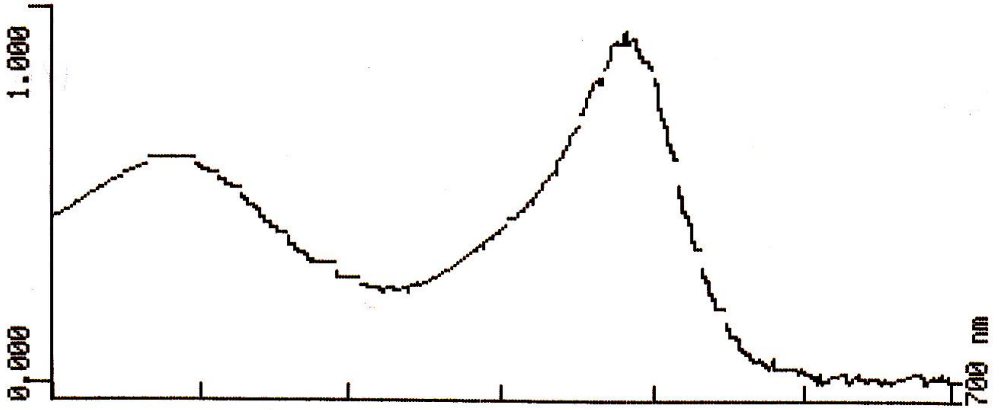
x axis: 50 nm/division

SmartSpec (TM) Plus Report  
14:47 11/17/11  
Operator: amira  
Scan Report

PH = 5.5

start wavelength: 400 nm  
end wavelength : 700 nm

max: 591 : 0.937 AU  
min: 680 : 0.000 AU



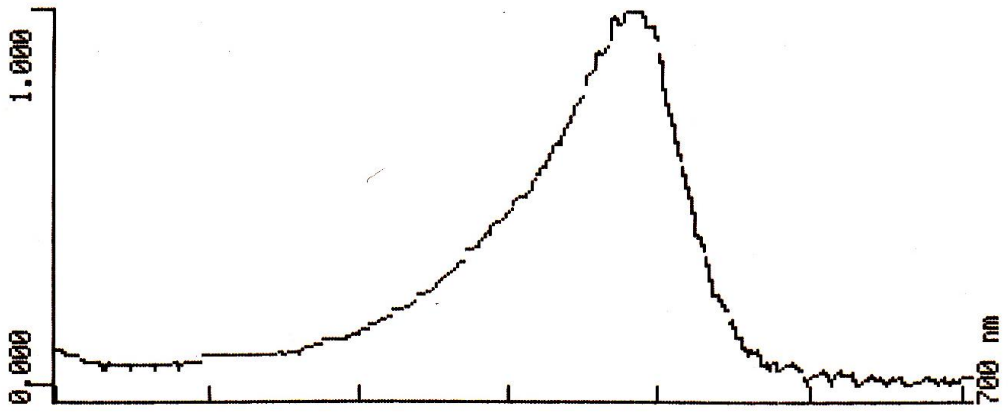
x axis: 50 nm/division

SmartSpec (TM) Plus Report  
14:58 11/17/11  
Operator: amira  
Scan Report

PH = 6

start wavelength: 400 nm  
end wavelength : 700 nm

max: 591 : 1.014 AU  
min: 682 : -0.007 AU



x axis: 50 nm/division