

pLL10

Promoter: T7
 Selection: Kanamycin and Ampicillin
 Origin: pLL17 plus pLL7 polylinker
 Source: {Blandin, 2002 #131}
 notes: vector for RNAi; to sequence insert use M13 forward and M13 reverse primers

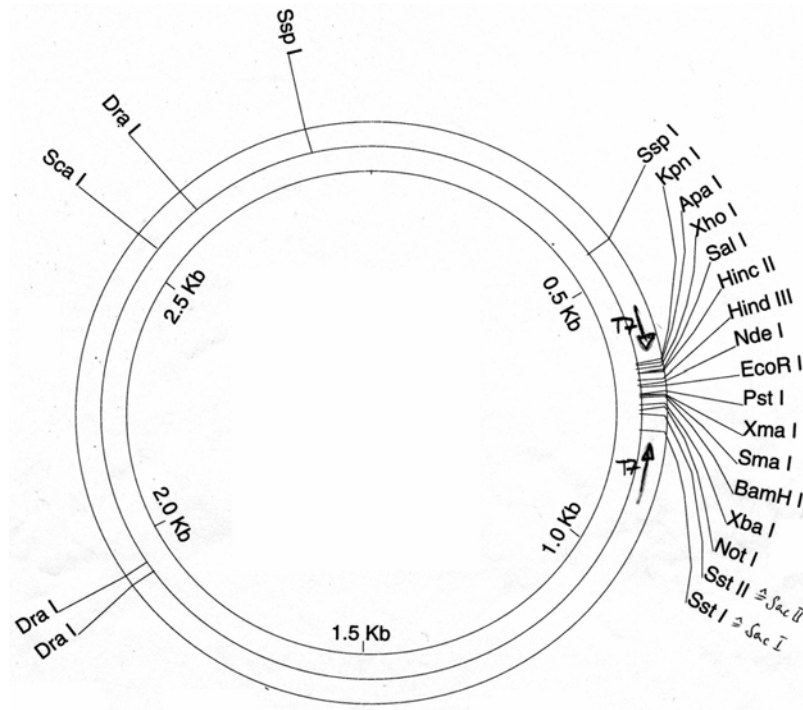


Fig. 10.4.6 The pLL10 vector map.

pLL10 enzymes	compatible with	Common sequence
Sst II (Sac II)	none	-
Not I	none	-
Xba I	Nhe I, Spe I	CTAG
Bam HI	Bcl I, Bgl II	GATC
Sma I / Hinc II	Ssp I, Sca I, Pvu II, Eco RV, Nae I, Hpa I, Dra I	blunt end
Pst I	Nsi I	TGCA
Eco RI	Apo I, Mfe I	AATT
Nde I	none	-
Hind III	none	-
Hinc II	Cf Sma I	blunt end
Sal I	none	-
Xho I	none	-
Apa I	none	-
Kpn I	none	-

Fig. 10.4.7 The pLL10 restriction enzymes and compatible enzymes.