



September 24, 2016

Peak Products Corporation
C/- 651 Rosebank Road
Avondale 1026
New Zealand

CERTIFICATE OF COMPLIANCE - DESIGN Peak® Aluminium Balustrade & Peak® Aluminium Handrail

To whom it may concern:

Compliance:

I did prepare the design and I certify that the part of the design described as:
Peak® Aluminium Balustrade & Peak® Aluminium Handrail complies with the following relevant New Zealand Building Code (NZBC) performance criteria for barriers and handrails:

- B1 Structure
 - For detached dwellings and within households units of multi-unit dwellings, for stairs and ramps and their landings (minimum barrier height 900mm), balconies and decks, and edges of internal floors or mezzanine floors (minimum barrier height 1000mm); and
 - Common areas of multi-unit dwellings, Stairs or ramps (minimum barrier height 900mm).
 - Where Design Ultimate Wind Pressure, calculated in accordance with AS/NZS 1170.2, does not exceed;
 - ± 1.5 kPa for installations incorporating 'Glass Panel' (including NZS 3604 design wind pressure requirements for Low, Medium, High and Very High Wind Zones), and
 - ± 2.2 kPa for installations incorporating 'Sectional Glass', and/or 'Standard Balusters', and/or 'Wide Balusters'. (This includes NZS 3604 design wind pressure requirements for Wind Zones Low, Medium, High, Very High, and Extra High).
- B2 Durability
 - For the components supplied.
- F2 Hazardous building materials
 - For the safety glazing components supplied.
- F4 Safety from falling
 - When installed in accordance with the 'Design documents' listed.

Compliance with performance criteria and objectives of "D1 Access routes" and "E2 External moisture" are installation dependent, and not addressed by design certification.

(continued over)

Page 1 of 16

September 24, 2016



Subject to the following conditions:

- i. Product selection and installation shall be made by a competent person who is conversant with the application and technical aspects of the product, and has ready access to the relevant technical information related to the product installation.
- ii. All connections between the product and any supporting structure must be independently verified as capable of providing the necessary structural support.
- iii. Product installation shall only be carried out to supporting structures independently verified as capable of providing the necessary structural support.

Limitations:

- i. This certificate specifically excludes any assessment of the suitability of Peak® Aluminium Balustrade and/or Peak® Aluminium Handrail as a swimming pool safety barrier.
- ii. This certificate does not deal with any aspect of the performance of gate components or their installation (detailed on page 14 of Peak® Aluminium Balustrade - Installation Guide (PB_ii_V2b)).
- iii. This certification does not deal with materials safety, site safety or safe work practices in any form.
- iv. This certification does not deal with the quality assurance and safe work practice aspects of the manufacturing, transportation and installation processes.

Design documents:

Specifications:	Prepared by:	Date:
Peak® Aluminium Balustrade – Installation Guide (PB_ii_V2b)	Peak Products Corporation	April 2016
Peak® Aluminium Handrail – Modular Handrail Installation Guide (PHK_ii_V1)	Peak Products Corporation	April 2016
Peak® Corner Fascia Bracket – Installation Guide (PB_FMB_C_IG_V1.indd)	Peak Products Corporation	April 2016
Peak® Mid/End/Stair Fascia Bracket – Installation Guide (PB_FMB_MES_IG_V1.indd)	Peak Products Corporation	April 2016
Peak® Aluminium Balustrade – System Details (<i>see Attachment 1</i>)	Peak Products Corporation	April 2016
Peak® Aluminium Balustrade – Geometric and Material Properties (company confidential)	Peak Products Corporation	January 2015
Fastener Schedule (<i>see Attachment 2</i>)	Acronem Consulting Australia	April 2016

(continued over)

September 24, 2016



Test Reports:	Prepared by:	Date:
Peak Products – “System and Component Testing for Serviceability and Ultimate Limit State Design”	Peak Innovations Inc.	28 January 2015
Peak Products – “6 mm Glass Panel Infill Testing for Serviceability and Ultimate Limit State Design”	Peak Innovations Inc.	17 February 2015
Engineering:	Prepared by:	Date:
REPORT No: ACA – 150730, “Peak® Aluminium Balustrade & Peak® Aluminium Handrail - NZBC Compliance - Appraisal and Certification”	Acronem Consulting Australia	1 September 2016
Report Number 101344991TOR-002, Engineering Evaluation – “Attachment of Railblazers® Aluminium Railing Fascia Mount Brackets to wood substrate.”	Intertek Testing Services NA Ltd.	22 November 2013

Signature:

Date:

24TH SEPTEMBER 2016

CAMERON CHICK BE(HONS), PH.D, GC.COM.(MKTG), M.AIRAH, RPEQ
ACRONEM CONSULTING AUSTRALIA PTY LTD
RBP (Vic) EC 39441



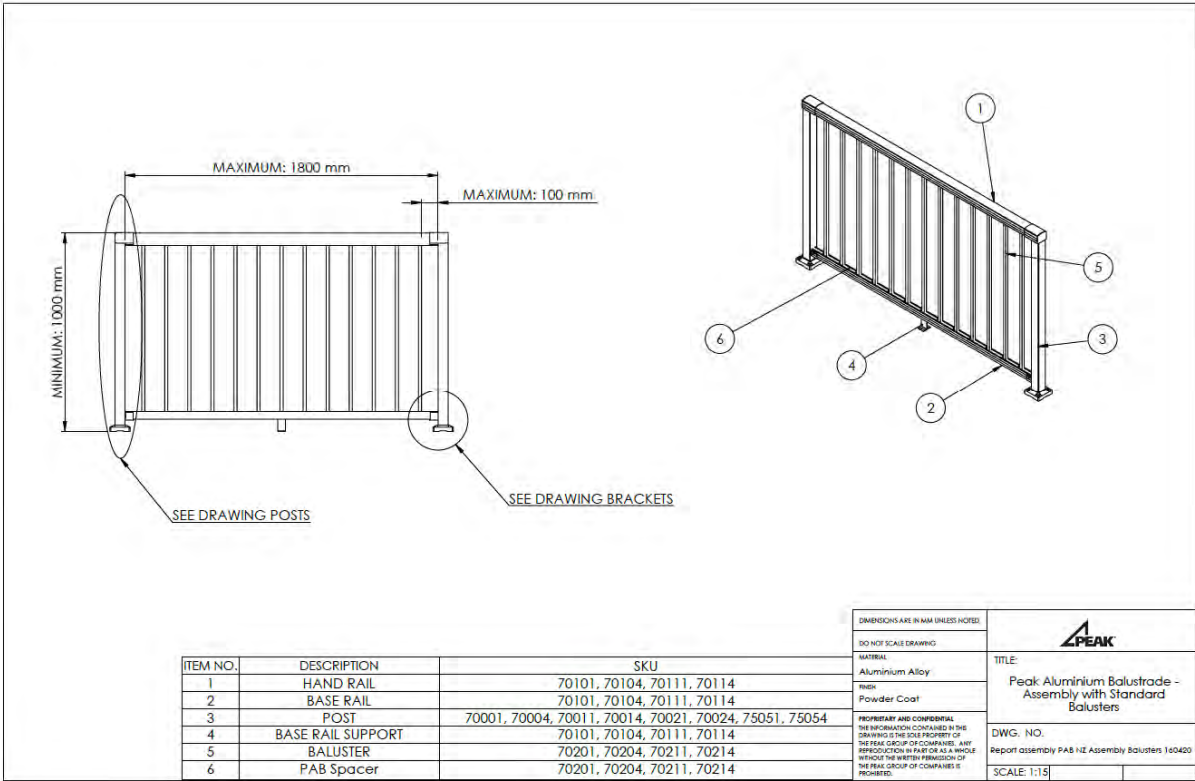
REGISTERED
Building Practitioner

September 24, 2016



Attachment 1: Peak® Aluminium Balustrade - System Details

Drawing Number:
Report assembly PAB NZ Assembly Balusters 160420
Report assembly PAB NZ Assembly Wide Balusters 160420
Report assembly PAB Assembly Glass Panel 160420
Report assembly PAB Assembly Glass Panel with balusters 160420
Report assembly PAB Assembly Glass Panel with wide balusters 160420
Report assembly PAB NZ Assembly Sectional Glass 160420
Report - Sectional Glass PAB 160119
Report assembly PAB Stair Balusters NZ 160420
Report assembly PAB Stair Wide Balusters NZ 160420
Report-brackets PAB 160420
Report-fascia PAB 160420
Report-posts PAB NZ 160420
Report – MHK Stair Assembly NZ 160119
Report – MHK Wall Assembly NZ 160119
Report – MHK Post Connection NZ 160119
Report – MHK Joint Connection NZ 160119





ITEM NO.	DESCRIPTION	SKU
1	WIDE BALUSTER	70301, 70304, 70311, 70314
2	SPACER	70301, 70304, 70311, 70314
3	HAND RAIL	70101, 70104, 70111, 70114
4	BASE RAIL	70101, 70104, 70111, 70114
5	POST	70001, 70004, 70011, 70014, 70021, 70024, 75051, 75054
6	BASE RAIL SUPPORT	70101, 70104, 70111, 70114

DIMENSIONS ARE IN MM UNLESS NOTED	
DO NOT SCALE DRAWING	
MATERIAL:	Aluminium Alloy
FINISH:	Powder Coat
<small>PROPRIETARY AND CONFIDENTIAL THE INFORMATION CONTAINED IN THIS DRAWING IS THE SOLE PROPERTY OF THE PEAK GROUP OF COMPANIES. ANY REPRODUCTION IN PART OR AS A WHOLE WITHOUT THE WRITTEN PERMISSION OF THE PEAK GROUP OF COMPANIES IS PROHIBITED.</small>	
TITLE:	Peak Aluminium Balustrade - Assembly with Wide Balusters
DWG. NO.:	Report assembly FAB 102 Assembly Wide Balusters 160420
SCALE:	1:15

ITEM NO.	DESCRIPTION	SKU
1	BASE RAIL SUPPORT	70101, 70104
2	BASE RAIL 1.2 m	70101, 70104
3	GLASS PANEL	70854, 70856
4	HAND RAIL 1.2 m	70101, 70104
5	POSTS	70001, 70004, 70011, 70014, 70021, 70024
6	LOWER GLASS GASKET	70940
7	UPPER GLASS GASKET	70940

DIMENSIONS ARE IN MM UNLESS NOTED	
DO NOT SCALE DRAWING	
MATERIAL:	Aluminium Alloy
FINISH:	Powder Coat
<small>PROPRIETARY AND CONFIDENTIAL THE INFORMATION CONTAINED IN THIS DRAWING IS THE SOLE PROPERTY OF THE PEAK GROUP OF COMPANIES. ANY REPRODUCTION IN PART OR AS A WHOLE WITHOUT THE WRITTEN PERMISSION OF THE PEAK GROUP OF COMPANIES IS PROHIBITED.</small>	
TITLE:	Peak Aluminium Balustrade - Assembly with Glass Panel
DWG. NO.:	Report assembly FAB Assembly Glass Panel 160420
SCALE:	1:15



ITEM NO.	DESCRIPTION	SKU	DIMENSIONS ARE IN MM UNLESS NOTED
1	BASE RAIL SUPPORT	70101, 70104	DO NOT SCALE DRAWING
2	GLASS PANEL	70854, 70856	MATERIAL: Aluminium Alloy
3	HAND RAIL 1.8 m	70111, 70114	FINISH: Powder Coat
4	BASE RAIL 1.8 m	70111, 70114	PROPRIETARY AND CONFIDENTIAL: THE INFORMATION CONTAINED IN THIS DRAWING IS THE SOLE PROPERTY OF THE PEAK GROUP OF COMPANIES. ANY REPRODUCTION IN PART OR AS A WHOLE WITHOUT THE WRITTEN PERMISSION OF THE PEAK GROUP OF COMPANIES IS PROHIBITED.
5	STANDARD BALUSTER	70201, 70204, 70211, 70214	DWG. NO. Report Assembly PAR Assembly Glass Panel with balusters 1800
6	PAB Spacer	70201, 70204, 70211, 70214	SCALE: 1:15
7	POSTS	70001, 70004, 70011, 70014, 70021, 70024	
8	UPPER GLASS GASKET	70940	
9	LOWER GLASS GASKET	70940	

ITEM NO.	DESCRIPTION	SKU	DIMENSIONS ARE IN MM UNLESS NOTED
1	BASE RAIL SUPPORT	70101, 70104	DO NOT SCALE DRAWING
2	GLASS PANEL	70854, 70856	MATERIAL: Aluminium Alloy
3	HAND RAIL 1.8 m	70111, 70114	FINISH: Powder Coat
4	BASE RAIL 1.8 m	70111, 70114	PROPRIETARY AND CONFIDENTIAL: THE INFORMATION CONTAINED IN THIS DRAWING IS THE SOLE PROPERTY OF THE PEAK GROUP OF COMPANIES. ANY REPRODUCTION IN PART OR AS A WHOLE WITHOUT THE WRITTEN PERMISSION OF THE PEAK GROUP OF COMPANIES IS PROHIBITED.
5	PAB Spacer	70301, 70304, 70311, 70314	DWG. NO. Report Assembly PAR Assembly Glass Panel with wide balusters 1800
6	WIDE BALUSTER	70301, 70304, 70311, 70314	SCALE: 1:15
7	POST	70001, 70004, 70011, 70014, 70021, 70024	
8	UPPER GLASS GASKET	70940	
9	LOWER GLASS GASKET	70940	



ITEM NO.	DESCRIPTION	SKU
1	POSTS	70001, 70004, 70011, 70014, 70021, 70024, 75051, 75054
2	HAND RAIL	70101, 70104, 70111, 70114
3	BASE RAIL	70101, 70104, 70111, 70114
4	SECTIONAL GLASS KIT	70714, 70715
5	SPACER	70714, 70715
6	BASE RAIL SUPPORT	70101, 70104, 70111, 70114

DIMENSIONS ARE IN MM UNLESS NOTED		
DO NOT SCALE DRAWING		
MATERIAL: Aluminium Alloy		TITLE: Peak Aluminium Balustrade - Assembly with Sectional Glass
FINISH: Powder Coat		DWG. NO. Report assembly PAB 1/2 Assembly Sectional Glass 180420
<small>PROPRIETARY AND CONFIDENTIAL THE INFORMATION CONTAINED IN THIS DRAWING IS THE SOLE PROPERTY OF THE PEAK GROUP OF COMPANIES. ANY REPRODUCTION IN PART OR AS A WHOLE WITHOUT THE WRITTEN PERMISSION OF THE PEAK GROUP OF COMPANIES IS PROHIBITED.</small>		SCALE: 1:15

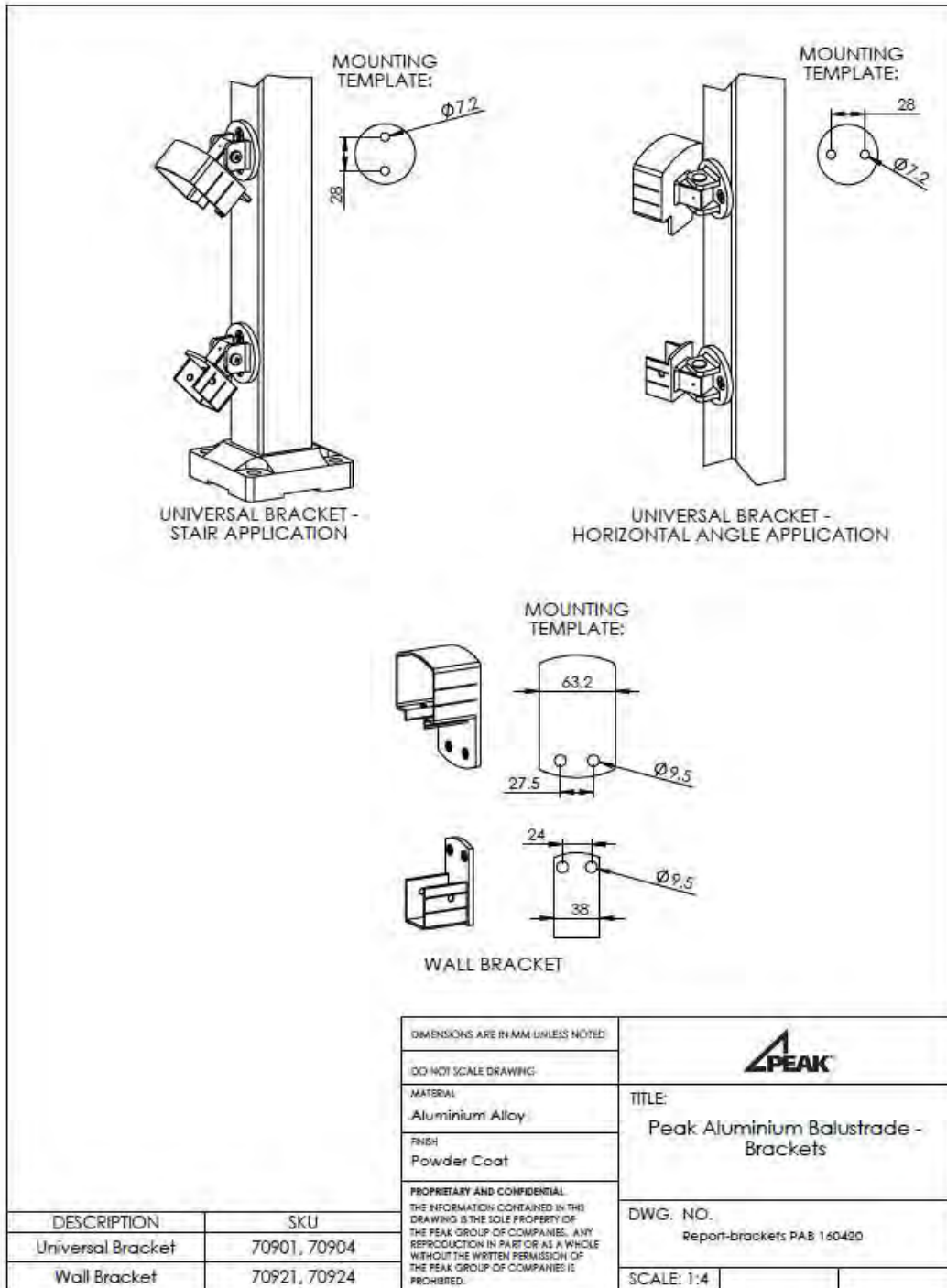
ITEM NO.	DESCRIPTION	SKU
1	Glass Panel Holder	70714, 70715
2	Glass Panel Gasket	
3	Glass Panel	

DIMENSIONS ARE IN MM UNLESS NOTED		
DO NOT SCALE DRAWING		
MATERIAL: Toughened Glass		TITLE: Sectional Glass Components
FINISH:		DWG. NO. Report - Sectional Glass PAB 180119
<small>PROPRIETARY AND CONFIDENTIAL THE INFORMATION CONTAINED IN THIS DRAWING IS THE SOLE PROPERTY OF THE PEAK GROUP OF COMPANIES. ANY REPRODUCTION IN PART OR AS A WHOLE WITHOUT THE WRITTEN PERMISSION OF THE PEAK GROUP OF COMPANIES IS PROHIBITED.</small>		SCALE: 1:2

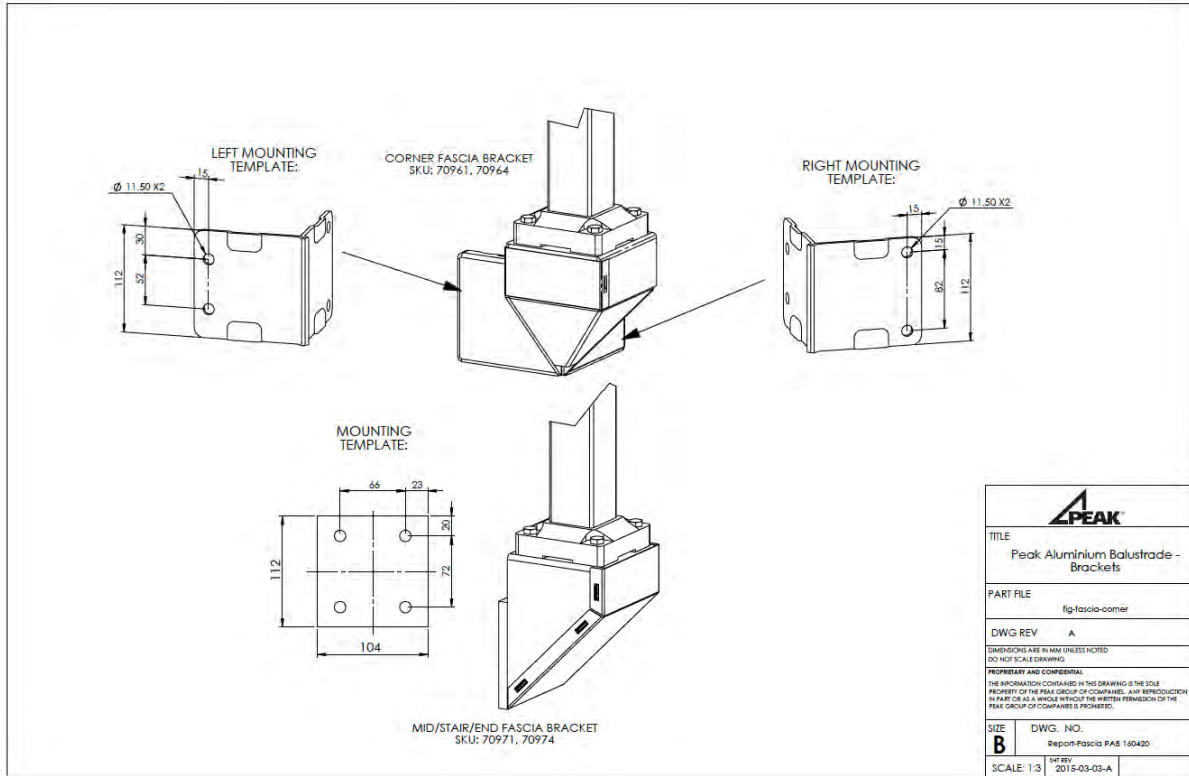


ITEM NO.	DESCRIPTION	SKU	DIMENSIONS ARE IN MM UNLESS NOTED
1	POST	70001, 70004, 75051, 75054	DO NOT SCALE DRAWING
2	HAND RAIL	70101, 70104, 70111, 70114	MATERIAL: Aluminium Alloy
3	BASE RAIL	70101, 70104, 70111, 70114	FINISH: Powder Coat
4	UNIVERSAL BRACKET	70901, 70904	PROPRIETARY AND CONFIDENTIAL THE INFORMATION CONTAINED IN THIS DRAWING IS THE SOLE PROPERTY OF THE PEAK GROUP OF COMPANIES. ANY REPRODUCTION IN PART OR AS A WHOLE WITHOUT THE WRITTEN PERMISSION OF THE PEAK GROUP OF COMPANIES IS PROHIBITED.
5	STANDARD STAIR BALUSTER	75261, 75264	SIZE: B
6	STAIR SPACER	75261, 75264	DWG. NO. Report assembly PAB Stair Spacers NZ 160400

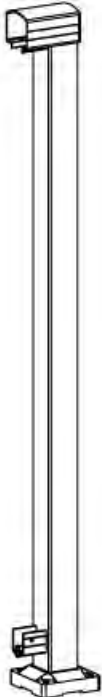
ITEM NO.	DESCRIPTION	SKU	DIMENSIONS ARE IN MM UNLESS NOTED
1	POST	70001, 70004, 75051, 75054	DO NOT SCALE DRAWING
2	HAND RAIL	70101, 70104, 70111, 70114	MATERIAL: Aluminium Alloy
3	BASE RAIL	70101, 70104, 70111, 70114	FINISH: Powder Coat
4	UNIVERSAL BRACKET	70901, 70904	PROPRIETARY AND CONFIDENTIAL THE INFORMATION CONTAINED IN THIS DRAWING IS THE SOLE PROPERTY OF THE PEAK GROUP OF COMPANIES. ANY REPRODUCTION IN PART OR AS A WHOLE WITHOUT THE WRITTEN PERMISSION OF THE PEAK GROUP OF COMPANIES IS PROHIBITED.
5	WIDE STAIR BALUSTER	75361, 75364	SIZE: B
6	STAIR SPACER	75361, 75364	DWG. NO. Report assembly PAB Stair Wide Balusters NZ 160400



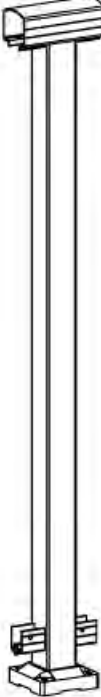
September 24, 2016



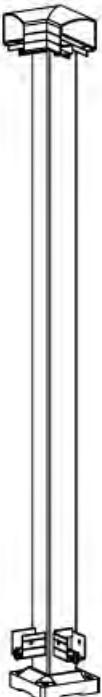




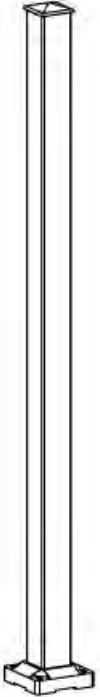
END POST



MID POST

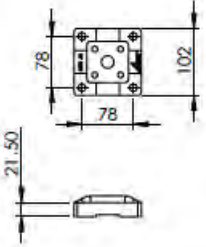


CORNER POST



STAIR POST

MOUNTING TEMPLATE



DESCRIPTION	SKU
End Post	70001, 70004
Mid Post	70011, 70014
Corner Post	70021, 70024
Stair Post	75051, 75054


DIMENSIONS ARE IN MM UNLESS NOTED

DO NOT SCALE DRAWING

MATERIAL
Aluminium Alloy

FINISH
Powder Coat

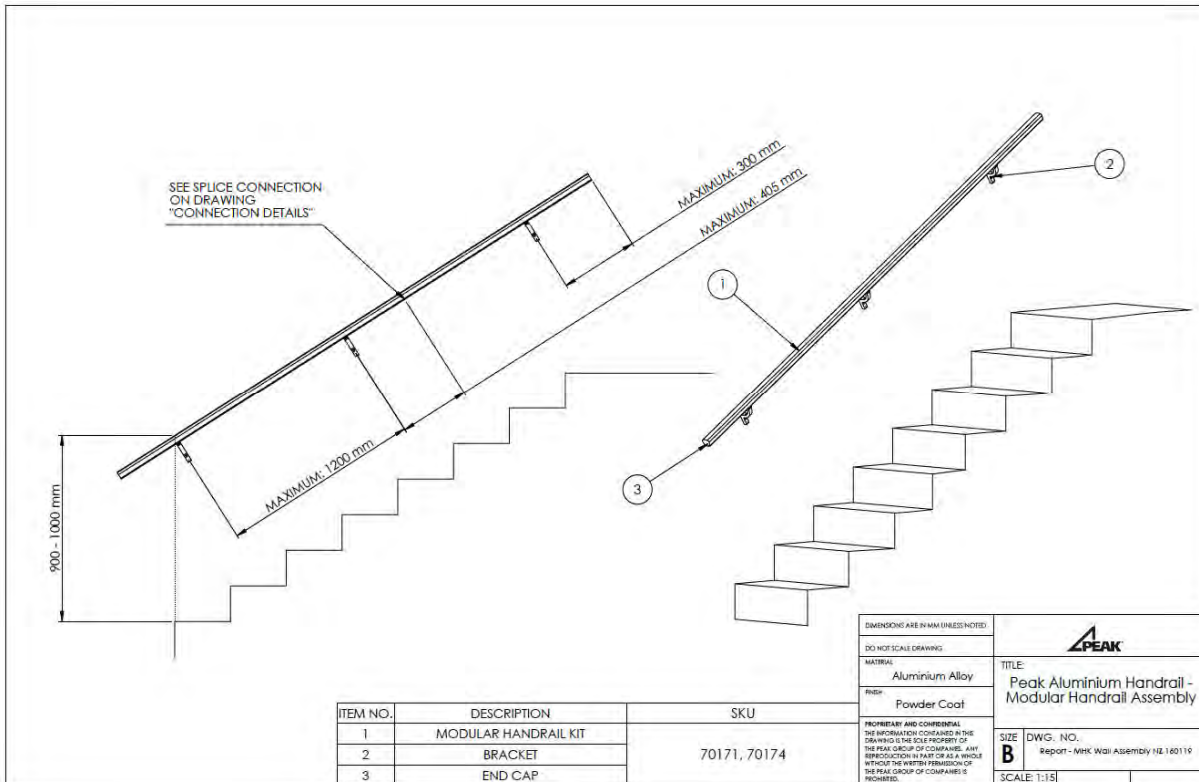
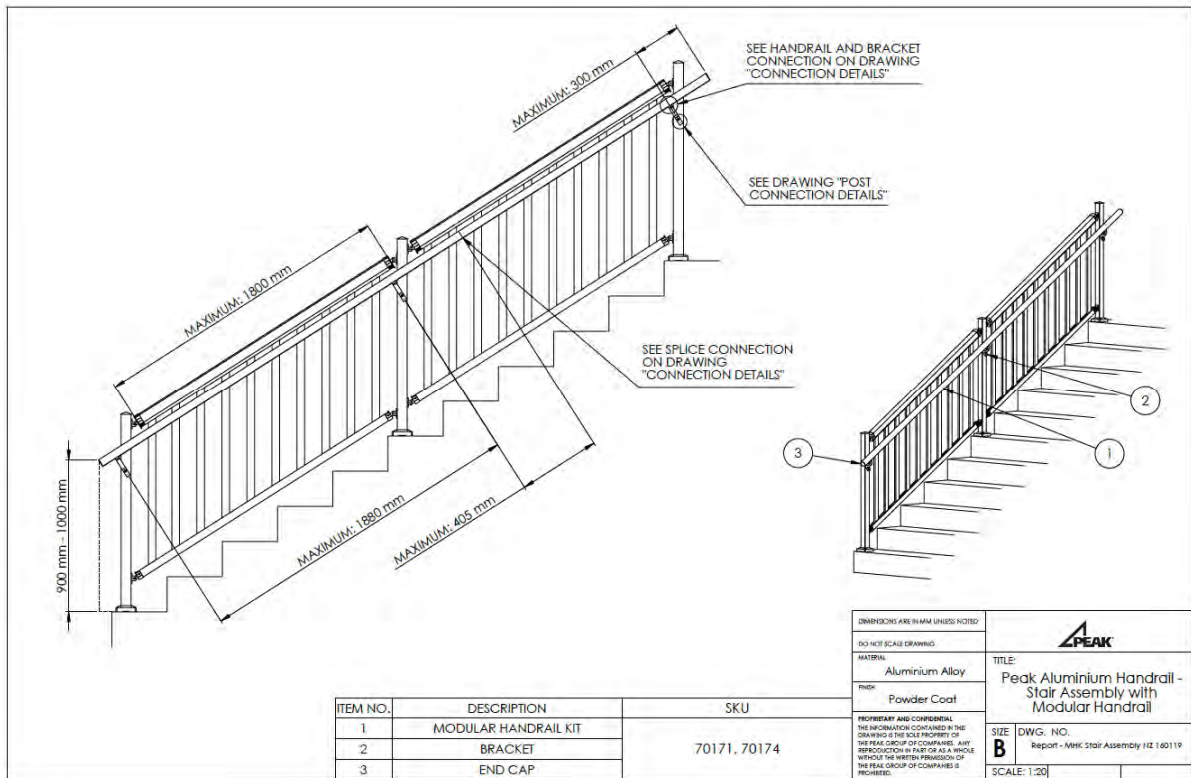
PROPRIETARY AND CONFIDENTIAL
THE INFORMATION CONTAINED IN THIS DRAWING IS THE SOLE PROPERTY OF THE PEAK GROUP OF COMPANIES. ANY REPRODUCTION IN PART OR AS A WHOLE WITHOUT THE WRITTEN PERMISSION OF THE PEAK GROUP OF COMPANIES IS PROHIBITED.

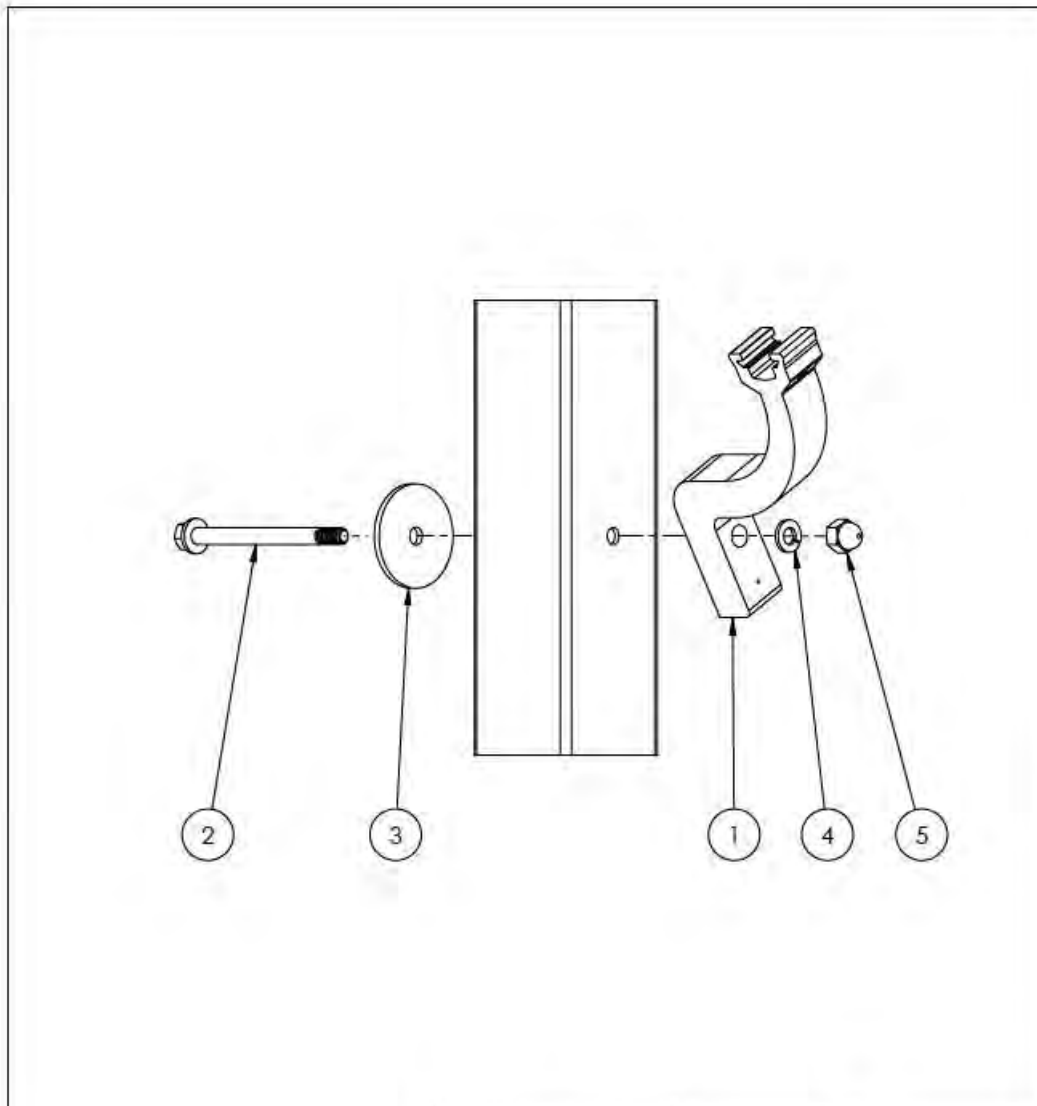


TITLE:
Peak Aluminium Balustrade - Posts

DWG. NO.
Report-posts PAB NZ 160420

SCALE: 1:8

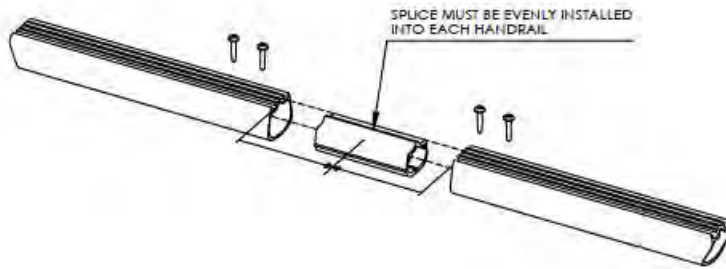




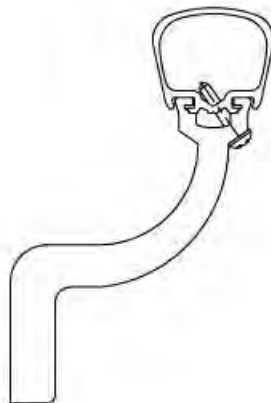
		DIMENSIONS ARE IN MM UNLESS NOTED		
		DO NOT SCALE DRAWING		
ITEM NO.	DESCRIPTION	MATERIAL	TITLE: Peak Aluminium Handrail - Modular Handrail - Post Connection Details	
1	BRACKET	Aluminium Alloy		
2	6.4 mm x 79 mm HEX. FLANGE BOLT	FINISH Powder Coat	DWG. NO. Report - MHK Post Connection IZ 160119	
3	39 mm BACKING PLATE			
4	6.4 mm LOCK WASHER	PROPRIETARY AND CONFIDENTIAL THE INFORMATION CONTAINED IN THIS DRAWING IS THE SOLE PROPERTY OF THE PEAK GROUP OF COMPANIES. ANY REPRODUCTION IN PART OR AS A WHOLE WITHOUT THE WRITTEN PERMISSION OF THE PEAK GROUP OF COMPANIES IS PROHIBITED.	SCALE: 1:2	
5	6.4 mm FLANGE ACORN NUT			
6	PAB Stair Post Assembly			




SPLICE CONNECTION



HANDRAIL AND BRACKET CONNECTION



DIMENSIONS ARE IN MM UNLESS NOTED DO NOT SCALE DRAWING		
MATERIAL: Aluminium Alloy	TITLE: Peak Aluminium Handrail - Modular Handrail Connection Details	
FINISH: Powder Coat	DWG. NO. Report - MIK Joint Connection HZ 160119	
PROPRIETARY AND CONFIDENTIAL THE INFORMATION CONTAINED IN THIS DRAWING IS THE SOLE PROPERTY OF THE PEAK GROUP OF COMPANIES. ANY REPRODUCTION IN PART OR AS A WHOLE WITHOUT THE WRITTEN PERMISSION OF THE PEAK GROUP OF COMPANIES IS PROHIBITED.	SCALE: 1:2	

September 24, 2016



Attachment 2: Fastener Schedule

The following summary information is provided on the fasteners used in conjunction with the Peak[®] Aluminium Balustrade & Peak[®] Aluminium Handrail. More detailed information regarding additional fastener requirements may be found in REPORT No: ACA – 150730.

In all cases, the attachment of fasteners to a suitable concrete or timber supporting structure designed by others, must be independently verified for each installation.

Peak[®] Aluminium Balustrade

- Post Base to Concrete:
 - o Option 1: 4 x Ramset[™] WERCS Ankascrew[™] Anchor, M10x100 mm (AS10100WGM50), or
 - o Option 2: 4 x Ramset[™] Ankascrew[™] Anchor, M10x100 mm (AS10100GM).
- Post Base to Timber:
4 x Coach Screw, M10x (length mm, to achieve the minimum required embedment depth).
- Corner Fascia Bracket to Concrete:
 - o Option 1: 4 x Ramset[™] WERCS Ankascrew[™] Anchor, M10x75 mm (AS10075WGM50), or
 - o Option 2: 4 x Ramset[™] Ankascrew[™] Anchor, M10x75 mm (AS10075GM).
- Corner Fascia Bracket to Timber:
4 x Coach Screw, M10 x (length mm, to achieve the minimum embedment depth).
- Fascia Mid/End/Stair Bracket to Concrete:
 - o Option 1: 4 x Ramset[™] WERCS Ankascrew[™] Anchor, M10x75 mm (AS10075WGM50), or
 - o Option 2: 4 x Ramset[™] Ankascrew[™] Anchor, M10x75 mm (AS10075GM).
- Fascia End/Mid/Stair Mount Bracket to Timber:
4 x Coach Screw, M10 x (length mm, to achieve the minimum embedment depth).
- Wall Bracket to Concrete:
 - o Option 1: 2 x Ramset[™] WERCS Ankascrew[™] Anchor, M6x50 mm (AS06050WGM100), or
 - o Option 2: 2 x Ramset[™] Ankascrew[™] Anchor, M6x50 mm (AS06050GM).
- Wall Bracket to Timber:
Option 1: 2x 14G Type 17 screws, x (length mm, to achieve the minimum embedment depth), or
Option 2: 2 x Coach Screw, M6 x (length mm, to achieve the minimum embedment depth).

September 24, 2016



Peak® Aluminium Handrail

- Wall Bracket to Concrete:
 - o Option 1: 1 x Ramset™ WERCS Ankascrew™ Anchor, M8x75 mm (AS08075WGM100), or
 - o Option 2: 1 x Ramset™ Ankascrew™ Anchor, M8x75 mm (AS08075GM).
- Wall Bracket to Timber:
 - o Option 1: 1 x Coach Screw, Grade 4.6 or 4.8, M8 x (*length* mm, to achieve the minimum embedment depth).
 - o Option 2: 1 x 18G (7.72 mm) steel screw, x (*length* mm, to achieve the minimum embedment depth).