

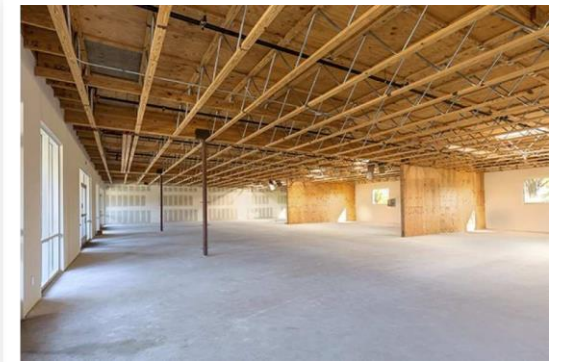
Available *now.*

2244 Pacific Coast Highway, Lomita, CA

\$Negotiable

Property Details

- Newly built two story building
- » Heart of Downtown Lomita
- » Easy Freeway Access
- » Onsite Parking
- »
- Executive Suite space available
- » Suited for retail and office use
- » Can be leased contiguously for a total of 4165 sq ft
- » Ground has 3 units with 1375 SF Each



Dave Iler
BROKER ASSOCIATE
Cell : 310-505-7843
The Iler Real Estate Group
2215 Artesia Blvd #1274
Redondo Beach, CA 90278

Dave@theilerrealestategroup.com
www.theilerrealestategroup.com

If you are already working with a real estate professional please disregard this solicitation.



Information has not been verified, is not guaranteed, and is subject to change.

