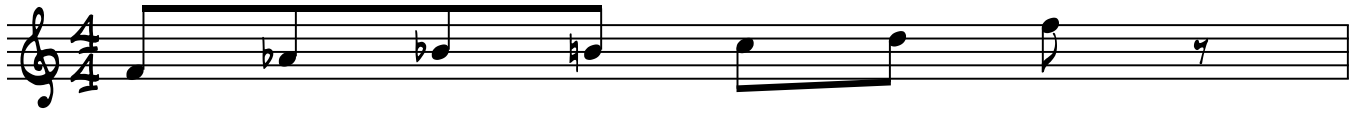


OSCAR PETERSON STYLE

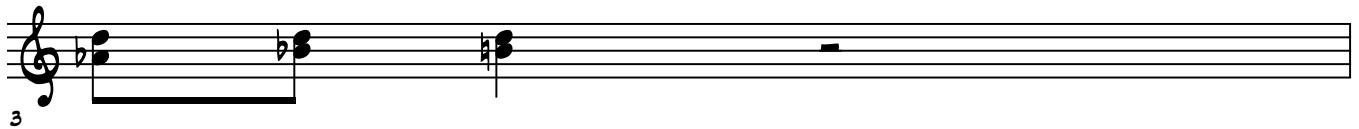
#1 MINOR MAJOR BLUES SCALE



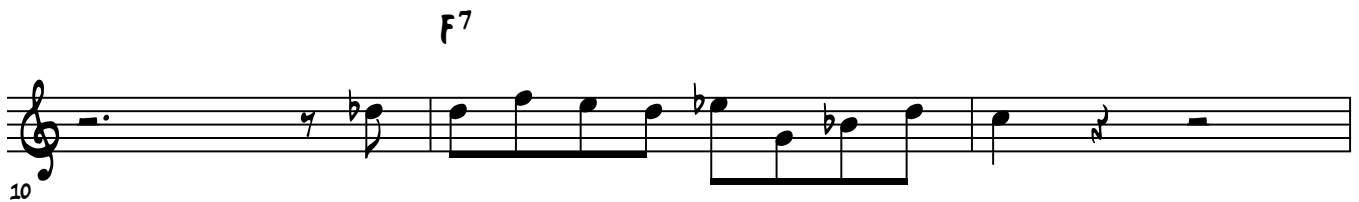
#2 - 6TH ON TOP PIVOT 1, 2, b3



#3 - 6TH ON TOP PIVOT b3, 4, #4



#4 - APPROACH NOTES



#5 - CHROMATIC ATTACK

13

#6 - #9, b13 ARPEGGIO

15

#7 - THE HOLD ON b3, #4, OR b7

17

#8 - DOMINANT 3 6 2 5 IN LEFT HAND

19

#9 - TRIPLET ARPEGGIO

21

#10 - F ON TOP PIVOT ALL MINOR MAJOR BLUES SCALE

22

#11 - LOWEST REGISTER BASS LINE

23