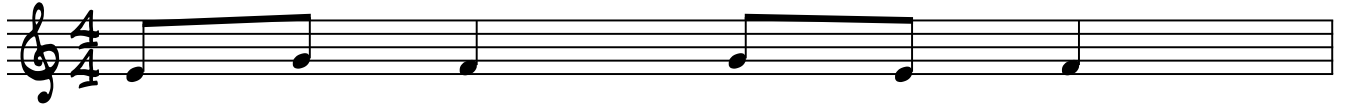


24 MOVEMENTS FOR 2-5-1'S

BRENDEN LOWE

D-7



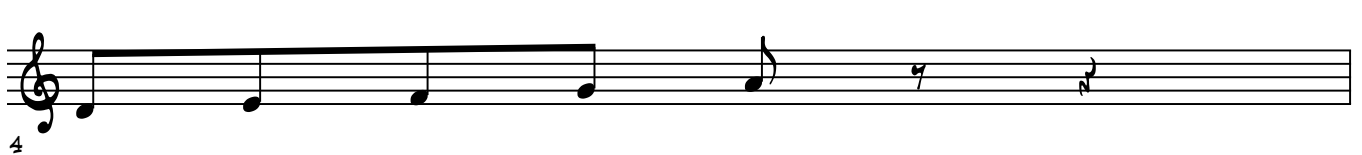
D-7



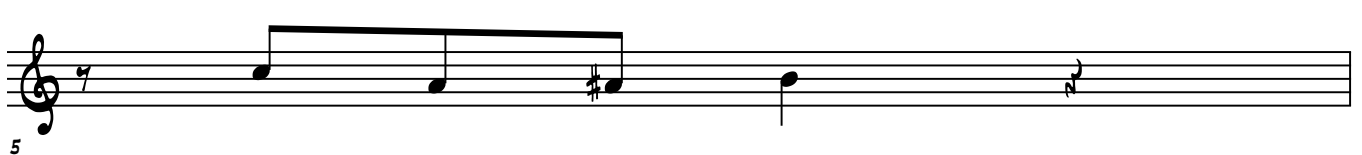
D-7



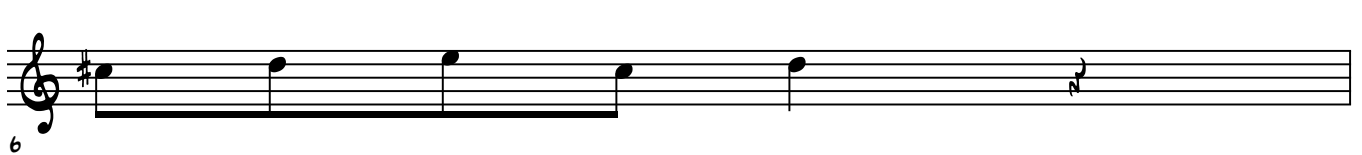
D-7



G7



G7



G7



G⁷

8

CMAJ⁷

9

CMAJ⁷

10

CMAJ⁷

11

CMAJ⁷

12

D-7^b5

13

D-7^b5

14

D-7^b5

15

D-7b5

Musical staff for measure 16, featuring a D-7b5 chord. The notes are D4, E4, F4, G4, A4, B4, C5, and D5.

G7b9b13

Musical staff for measure 17, featuring a G7b9b13 chord. The notes are G4, A4, Bb4, C5, D5, Eb5, and F5.

G7b9b13

Musical staff for measure 18, featuring a G7b9b13 chord. The notes are G4, A4, Bb4, C5, D5, Eb5, and F5.

G7b9b13

Musical staff for measure 19, featuring a G7b9b13 chord. The notes are G4, A4, Bb4, C5, D5, Eb5, and F5. A triplet of notes (C5, D5, Eb5) is marked with a '3' above it.

G7b9b13

Musical staff for measure 20, featuring a G7b9b13 chord. The notes are G4, A4, Bb4, C5, D5, Eb5, and F5.

C-MAJ7

Musical staff for measure 21, featuring a C-MAJ7 chord. The notes are C4, E4, G4, Bb4, C5, and E5. A triplet of notes (E4, G4, Bb4) is marked with a '3' above it.

C-MAJ7

Musical staff for measure 22, featuring a C-MAJ7 chord. The notes are C4, E4, G4, Bb4, C5, and E5.

C-MAJ7

Musical staff for measure 23, featuring a C-MAJ7 chord. The notes are C4, E4, G4, Bb4, C5, and E5.

C-MAJ7

A musical staff in treble clef showing a sequence of notes for a C-Maj7 chord movement. The notes are: C4 (quarter), Bb4 (quarter), Ab4 (quarter), G4 (quarter), F4 (quarter), Eb4 (quarter), D4 (quarter), and C4 (quarter). The notes from Bb4 to F4 are grouped by a horizontal line above the staff, and the notes from Eb4 to C4 are grouped by a horizontal line below the staff. A double bar line is at the end of the staff. The number '24' is written below the first note.