

**METRIC**  
DISTANCES & CO-ORDINATES SHOWN ON THIS PLAN ARE IN METRES AND CAN BE CONVERTED TO FEET BY DIVIDING BY 0.3048.

**GRID SCALE CONVERSION**  
DISTANCES ARE GROUND AND CAN BE CONVERTED TO GRID BY MULTIPLYING BY THE COMBINED SCALE FACTOR OF 0.99978220

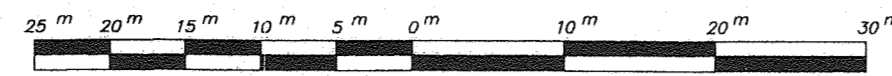
OBSERVED REFERENCE POINTS (ORP'S): DERIVED FROM PRECISE POINT POSITIONING SERVICE (PPP): UTM ZONE 17 NORTH, NAD 83 (CSRS) (2016) CO-ORDINATES TO RURAL ACCURACY AS PER SECTION 14 (2) OF O. REG. 216/10

POINT ID	NORTHING	EASTING
O.R.P. "A"	5,014,866.386	634,654.211
O.R.P. "B"	5,015,128.255	634,759.288

CO-ORDINATES CANNOT, IN THEMSELVES, BE USED TO ESTABLISH CORNERS OR BOUNDARIES SHOWN ON THIS PLAN.

PLAN OF SURVEY OF  
PART OF LOT 30, CONCESSION 12  
GEOGRAPHIC TOWNSHIP OF STEPHENSON  
TOWN OF HUNTSVILLE  
DISTRICT MUNICIPALITY OF MUSKOKA  
PAUL GOODRIDGE, O.L.S.

SCALE: 1 : 500



I REQUIRE THIS PLAN TO BE DEPOSITED UNDER THE LAND TITLES ACT.

DECEMBER 23, 2016  
DATE

PAUL GOODRIDGE  
ONTARIO LAND SURVEYOR

PLAN 35R-25288

RECEIVED AND DEPOSITED

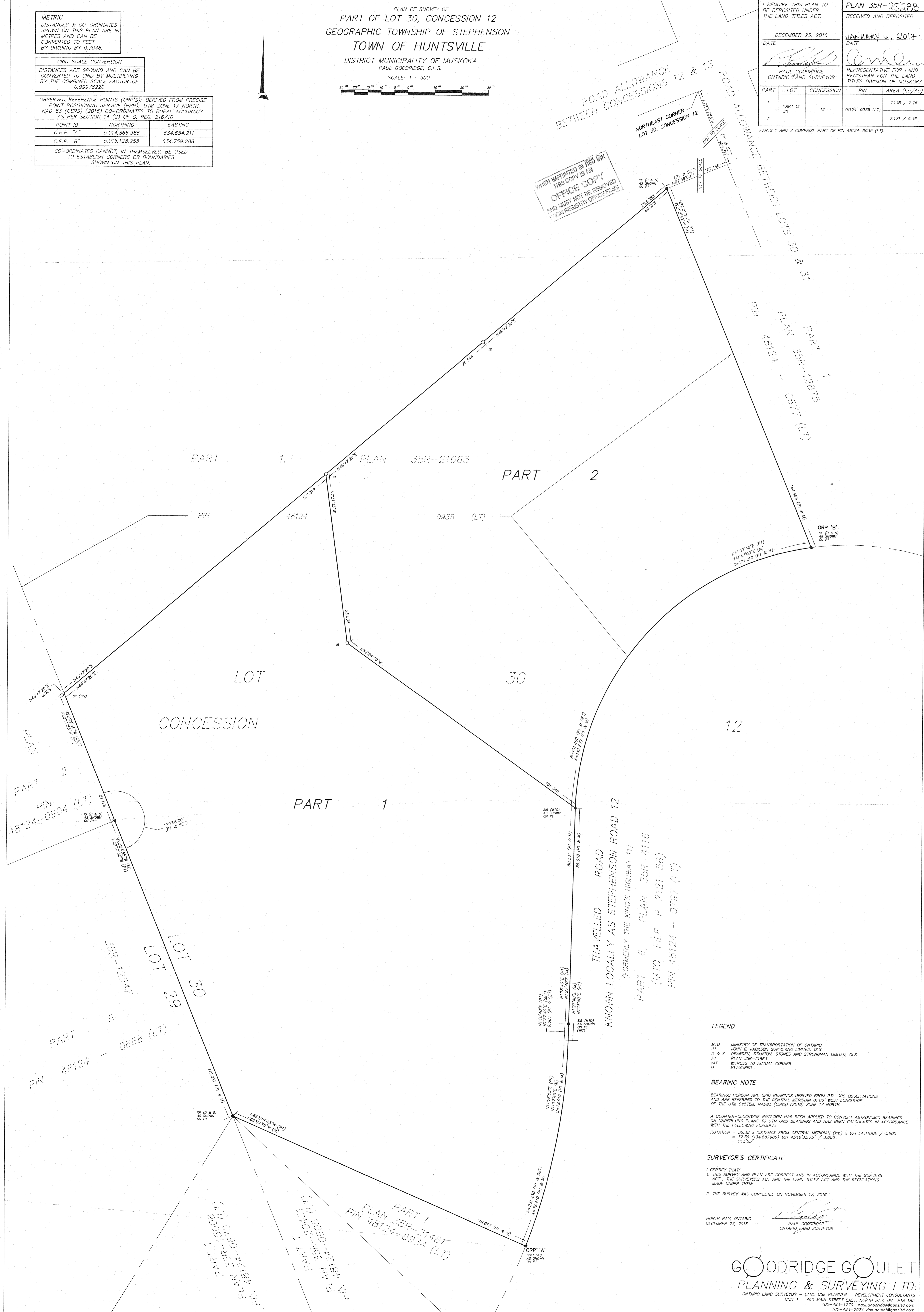
JANUARY 6, 2019  
DATE

REPRESENTATIVE FOR LAND REGISTRAR FOR THE LAND TITLES DIVISION OF MUSKOKA

PART	LOT	CONCESSION	PIN	AREA (ha/Ac)
1	PART OF 30	12	48124-0935 (LT)	3.138 / 7.76
2				2.171 / 5.36

PARTS 1 AND 2 COMPRISE PART OF PIN 48124-0935 (LT).

WHEN IMPRINTED IN RED INK THIS COPY IS AN OFFICE COPY AND MUST NOT BE REMOVED FROM REGISTRY OFFICE FILES



**LEGEND**

MTO MINISTRY OF TRANSPORTATION OF ONTARIO  
JJS JOHN E. JACKSON SURVEYING LIMITED, O.L.S.  
D & S DEARDEN, STANTON, STONES AND STRONGMAN LIMITED, O.L.S.  
PI PLAN 35R-21663  
WT WITNESS TO ACTUAL CORNER  
M MEASURED

**BEARING NOTE**

BEARINGS HEREON ARE GRID BEARINGS DERIVED FROM RTK GPS OBSERVATIONS AND ARE REFERRED TO THE CENTRAL MERIDIAN 81°00' WEST LONGITUDE OF THE UTM SYSTEM, NAD83 (CSRS) (2016) ZONE 17 NORTH.  
A COUNTER-CLOCKWISE ROTATION HAS BEEN APPLIED TO CONVERT ASTROLOGIC BEARINGS ON UNDERLYING PLANS TO UTM GRID BEARINGS AND HAS BEEN CALCULATED IN ACCORDANCE WITH THE FOLLOWING FORMULA:  
ROTATION =  $32.39 \times \text{DISTANCE FROM CENTRAL MERIDIAN (km)} \times \tan \text{LATITUDE} / 3,600$   
=  $32.39 (134.687986) \tan 45^{\circ}16'33.75'' / 3,600$   
=  $11.325^{\circ}$

**SURVEYOR'S CERTIFICATE**

I CERTIFY THAT:  
1. THIS SURVEY AND PLAN ARE CORRECT AND IN ACCORDANCE WITH THE SURVEYS ACT, THE SURVEYORS ACT AND THE LAND TITLES ACT AND THE REGULATIONS MADE UNDER THEM;  
2. THE SURVEY WAS COMPLETED ON NOVEMBER 17, 2016.

NORTH BAY, ONTARIO  
DECEMBER 23, 2016  
PAUL GOODRIDGE  
ONTARIO LAND SURVEYOR

**GOODRIDGE GOULET**  
PLANNING & SURVEYING LTD.  
ONTARIO LAND SURVEYOR - LAND USE PLANNER - DEVELOPMENT CONSULTANTS  
UNIT 1 - 490 MAIN STREET EAST, NORTH BAY, ON, P1B 1B5  
705-493-1770 paul.goodridge@gpsatl.com  
705-493-7974 don.goulet@gpsatl.com

FIELD	OFFICE	FILE