

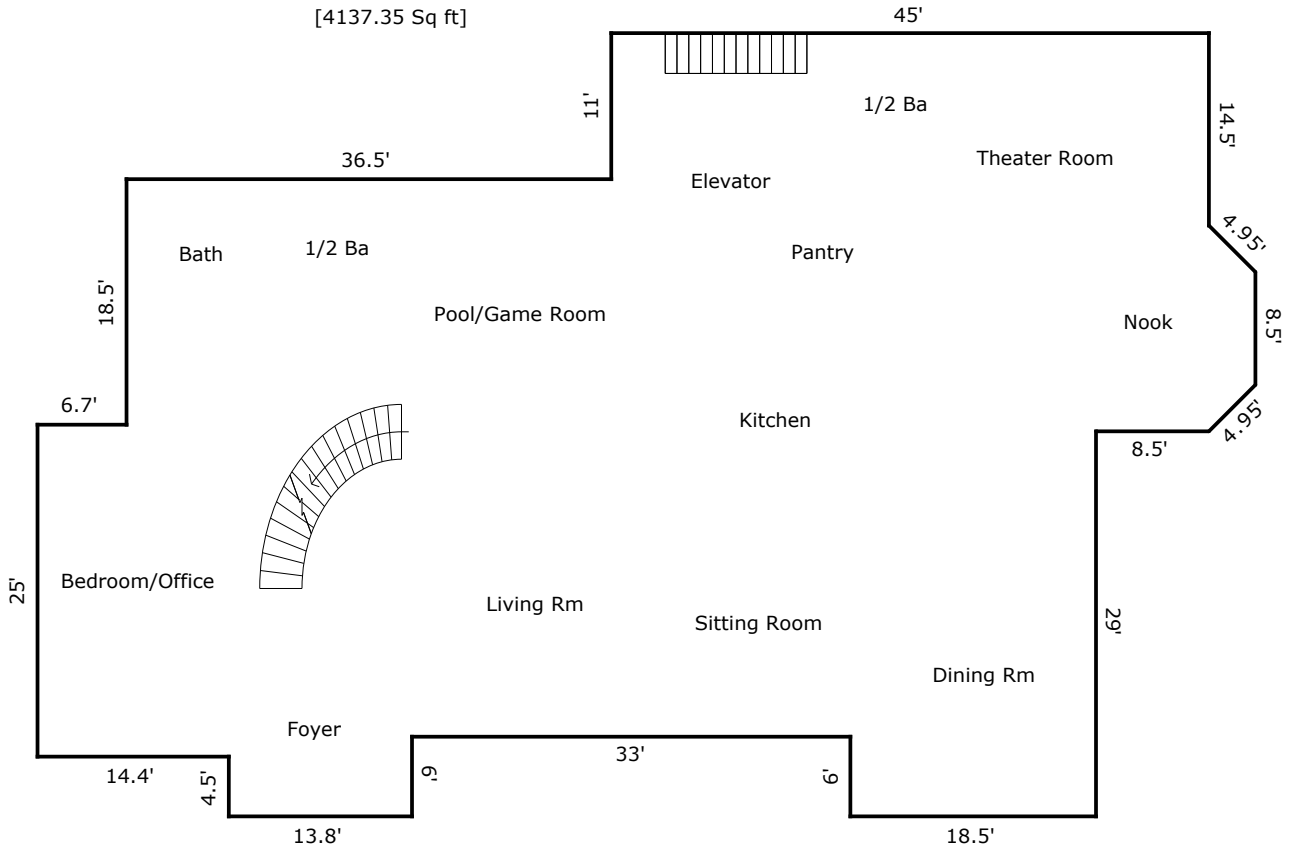
TOTAL Sketch by a la mode, inc.

Area Calculations Summary

Non-living Area

6 Car Bi	2626.35 Sq ft	$18.5 \times 6 = 111$ $47.5 \times 23.5 = 1116.25$ $19 \times 11 = 209$ $45 \times 16 = 720$ $41 \times 6 = 246$ $8 \times 27.5 = 220$ $0.5 \times 0.2 \times 27.5 = 2.75$ $0.5 \times 0.2 \times 13.5 = 1.35$
Basement	1388.1 Sq ft	$25.5 \times 18.8 = 479.4$ $34.2 \times 23.5 = 803.7$ $6 \times 13.8 = 82.8$ $14.4 \times 1.5 = 21.6$ $0.5 \times 6 \times 0.2 = 0.6$
Basement	164.4 Sq ft	$0.5 \times 17.5 \times 0.2 = 1.75$ $17.5 \times 7.8 = 136.5$ $0.5 \times 13.5 \times 0.2 = 1.35$ $4 \times 0.2 = 0.8$ $4 \times 6 = 24$

First Floor
[4137.35 Sq ft]



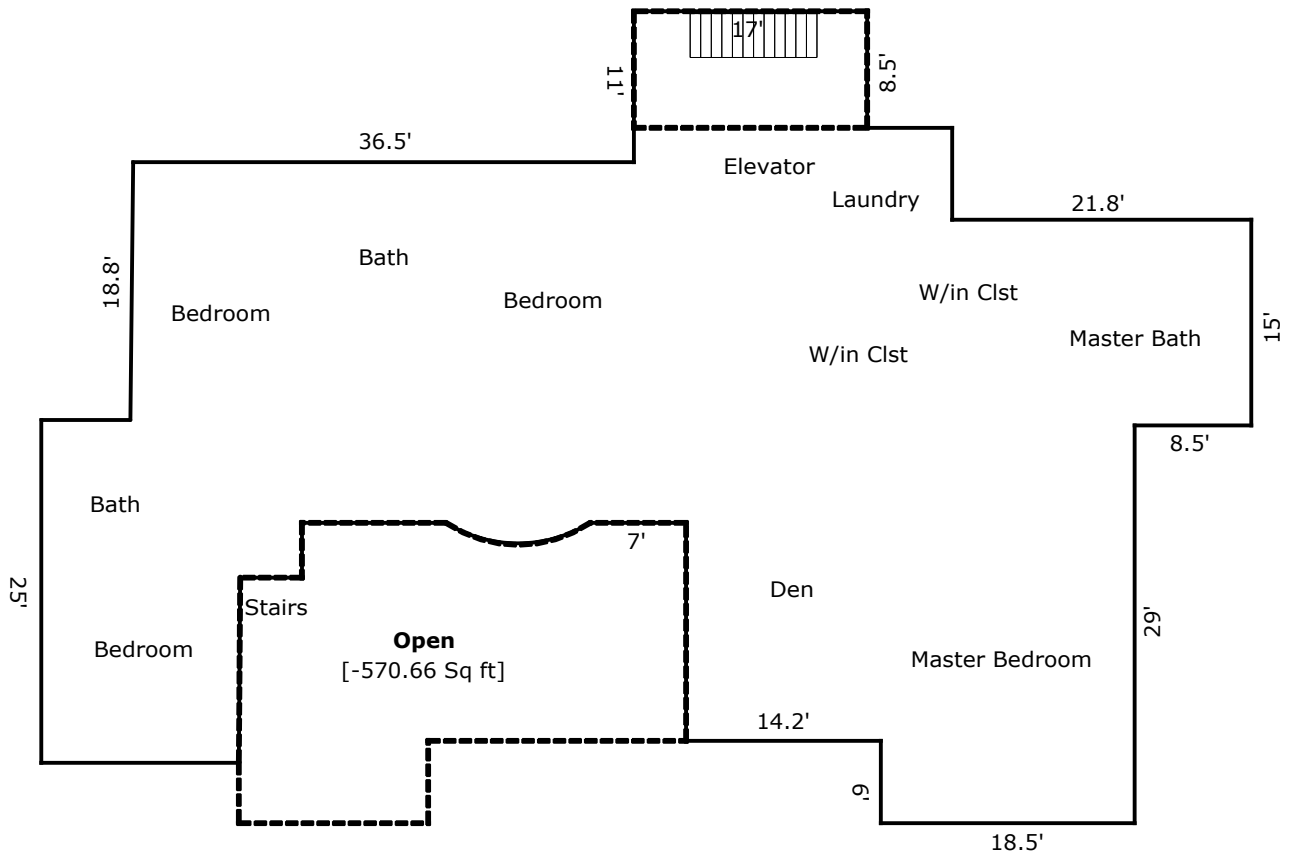
TOTAL Sketch by a la mode, inc.

Area Calculations Summary

Living Area		Calculation Details
First Floor	4137.35 Sq ft	$0.5 \times 3.5 \times 3.5 = 6.12$ $0.5 \times 3.5 \times 3.5 = 6.12$ $8.5 \times 3.5 = 29.75$ $18.5 \times 6 = 111$ $13.8 \times 4.5 = 62.1$ $30 \times 8.5 = 255$ $53 \times 36.5 = 1934.5$ $36.5 \times 18.5 = 675.25$ $25 \times 28.2 = 705$ $23.5 \times 15 = 352.5$
Total Living Area (Rounded):	4137 Sq ft	

Second Floor
[3158.84 Sq ft]

Stairs
[-144.5 Sq ft]



TOTAL Sketch by a la mode, inc.

Area Calculations Summary

Living Area		Calculation Details		
Open	-570.66 Sq ft	15.9 × 18.8	=	298.92
		9.2 × 4	=	36.8
		17.9 × 13.7	=	245.23
		0.1 × 4.4	=	0.44
		0.5 × 0.1 × 13.5	=	0.68
		Negative Arc	=	11.41
Stairs	-144.5 Sq ft	8.5 × 17	=	144.5
Second Floor	3158.84 Sq ft	18.5 × 6	=	111
		0.5 × 13.5 × 0.1	=	0.68
		14.4 × 13.5	=	194.4
		32.7 × 15.9	=	519.93
		19 × 4	=	76
		79.7 × 7.1	=	565.87
		88.2 × 0.4	=	35.28
		0.5 × 14.6 × 0.16	=	1.13
		81.54 × 14.6	=	1190.55
		0.5 × 4.2 × 0.04	=	0.09
		59.7 × 4.2	=	250.74
		23.2 × 2.5	=	58
		17 × 8.5	=	144.5
		Arc	=	10.67

Total Living Area (Rounded):

3014 Sq ft