

# Make Me a Servant

Words and Music by  
TOMMY WALKER  
Arranged by  
Billy Payne

Prayerfully (♩ = 56)

0:48 *rubato*



Make me \_\_\_ a ser - vant, make me \_\_\_ a ser - vant For You are \_\_\_ the ser - vant.

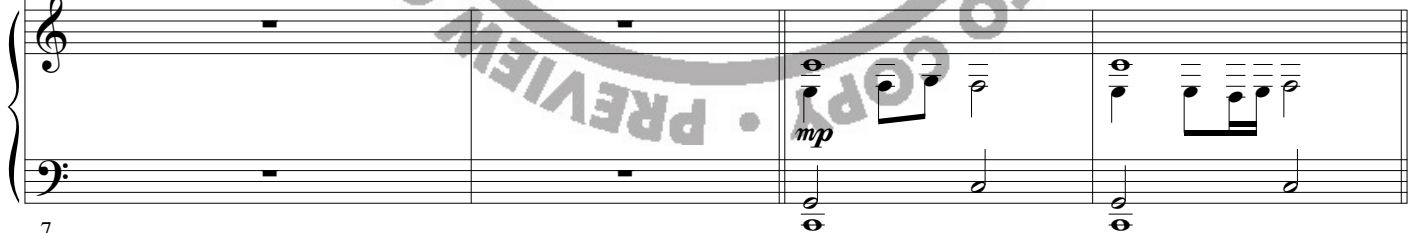


of \_\_\_ all \_\_\_ Though You \_\_\_ are \_\_\_ King You bowed down and washed our \_\_\_ feet For



You are \_\_\_ the ser - vant of all \_\_\_

C Csus C Csus





2:18

You are \_\_\_ the ser - vant of all \_\_\_ We will \_\_\_ be blessed when we

You are \_\_\_ the ser - vant of all \_\_\_ We will \_\_\_ be blessed when we

F Dm7 C/G G7 Csus C Csus C E/C

17

*mf*

This system contains the first two vocal staves and the piano accompaniment. The piano part includes a large watermark that reads 'ILLEGAL TO COPY • PREVIEW ONLY • ILLEGAL TO COPY'. The piano accompaniment starts at measure 17 and includes a dynamic marking of *mf*.

help and work \_ and serve \_ We \_\_\_ will be \_\_\_ like You, \_ our King

help and work \_ and serve \_ We \_\_\_ will be \_\_\_ like You, \_ our King

E/C C E/C C

21

This system contains the second two vocal staves and the piano accompaniment. The piano part includes a large watermark that reads 'ILLEGAL TO COPY • PREVIEW ONLY • ILLEGAL TO COPY'. The piano accompaniment starts at measure 21.

We will be blessed when we hum-bly work and serve We will be serv-ing You

We will be blessed when we hum-bly work and serve We will be serv-ing You our

24

2:54

our King. So make me a ser-vant, make me a ser-vant For

King Make me a ser-vant, make me a ser-vant For

G C G C G G/B B<sup>b</sup>/C C7

*mp*

27

You are the ser - vant of all Though You are King You bowed

You are the ser - vant of all Though You are King You bowed

F C/E Dm7 C G D7 F# G G/B C E7 Am7 C7

30

down and washed our feet For You are the ser - vant of all Je - sus,

down and washed our feet For You are the ser - vant of all

G G/B C C/E F Dm7 C/G G7 Csus *molto rit.* C

33

3:30

*rubato*

You are the ser - vant of all.

36

*p*

F *8va* C G G7

*a tempo* C E7 Am7 C7

*mp*

39

G G/B C C/E F Dm7 C/G G7 Csus C

*rit.* *rit.*