

Contents

| | |
|---|-----|
| Foreword | i |
| Acknowledgments | ii |
| Introduction | iii |
| <i>Chapter 1</i> Before You Start | |
| Twelve Pointers for Covering Makers | 1 |
| <i>Chapter 2</i> Understanding the Terms | |
| Definitions of Covering Makers' Lingo | 3 |
| <i>Chapter 3</i> Gathering the Tools | |
| A List of Supplies | 5 |
| <i>Chapter 4</i> Choosing the Fabric | |
| A Summary of Fabric Characteristics | 7 |
| <i>Chapter 5</i> Constructing a Covering | |
| Pattern Layout and Cutting Instructions | 9 |
| Pressing the Pleats | 12 |
| Attaching the Headpiece | 16 |
| Attaching the Band | 21 |
| Final Steam Pressing | 25 |
| <i>Chapter 6</i> Copying a Pattern | |
| Steps For Accurate Copying of Patterns | 27 |
| <i>Chapter 7</i> The Basic Structure of a Covering | |
| General Tips For a Well-proportioned Covering | 29 |
| <i>Chapter 8</i> Fitting a Covering | |
| Fitting the Crown | 32 |
| Fitting the Headpiece | 37 |

Chapter 9 **Pattern Adjusting and Troubleshooting**

| | |
|---|----|
| Looseness | 43 |
| Poor Crown Curves. | 47 |
| Bouncing. | 51 |
| Boxy Coverings/Too Much Bun Space. | 54 |
| Increasing Covering Size | 56 |
| Adjusting Short Top Pleats/Long Bottom Pleats | 58 |
| Adjusting Wide Bottom Pleats/Narrow Side Pleats | 60 |
| Decreasing Space Behind the Hair Bun. | 60 |
| Eliminating the Dip at the End of the Headpiece | 61 |
| Fitting Uneven Hair Buns. | 63 |
| Fixing a Tipped Back Covering | 64 |
| Decreasing Depth at Crown Top | 64 |
| Making a Crown From Scratch | 65 |

Chapter 10 **Changing Pleat Arrangements**

| | |
|---|----|
| Changing From Eight- to Nine-pleat Arrangements. | 67 |
| Changing From Eight- to Seven-pleat Arrangements. | 68 |

Chapter 11 **Taking a Pattern from a Covering**

| | |
|--------------------------------------|----|
| Making a Crown Pattern | 71 |
| Making a Headpiece Pattern | 72 |

Chapter 12 **Covering Care**

| | |
|------------------------------------|----|
| Washing Your Covering | 75 |
| Re-pressing Your Covering. | 76 |
| Storing Your Covering | 77 |

Chapter 13 **Sample Patterns**

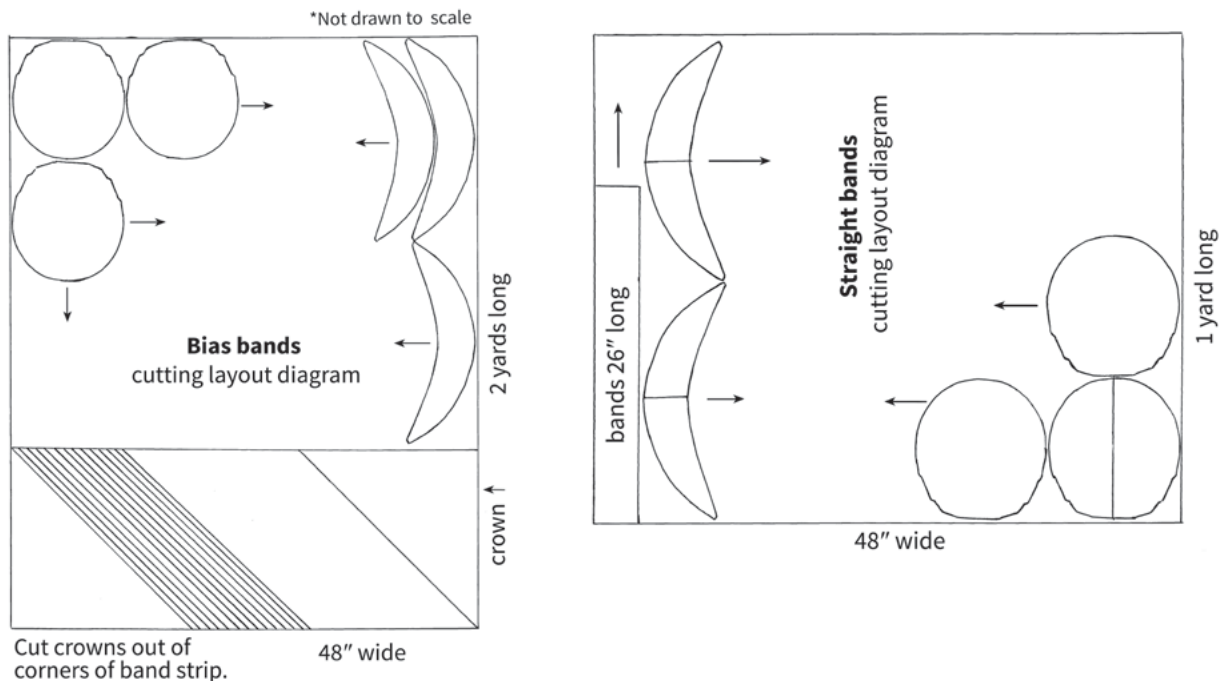
| | |
|--|-----|
| Pleat Arrangements List. | 80 |
| Contact Information for Supplies | 115 |
| About the Author | 116 |

Chapter Five

Constructing a Covering

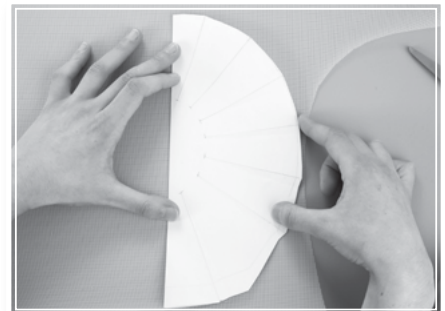
Pattern Layout and Cutting Instructions

This section presupposes you have a pattern that needs no changes.



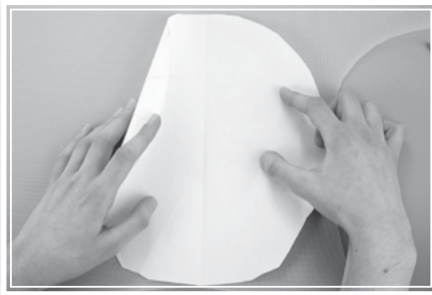
A. Cutting out the crown

Step 1. Fold the crown pattern in half vertically and line it up with the straight (lengthwise) grain of the fabric, having the pleat markings on the pattern face down against the fabric. (Don't line crowns up with the cross grain of the fabric.) Lay the folded edge of the pattern halfway across a row of holes so that the center is a row of holes and not a line. This is because you will mark the center top with a pin, not a notch.



Step 1

Step 2. Unfold the pattern, being careful not to let it slip from the way you positioned it (2a). Secure with four pins. Tip: To get the pins through, hold the pattern in the middle with thumb and fingers, and then push towards your fingers with your pin (2b). Make sure no fabric is bunched up under the pattern. If there is, repin.



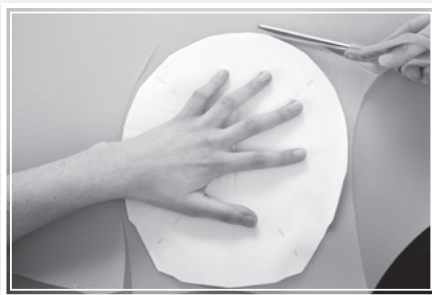
Step 2a



Step 2b

Step 3. Rough cut around the pattern.

Step 4. Pin between every other pleat. Cut very close to the edge of your pattern, being careful not to cut into the pattern. Exactness is a must.



Step 3



Step 4

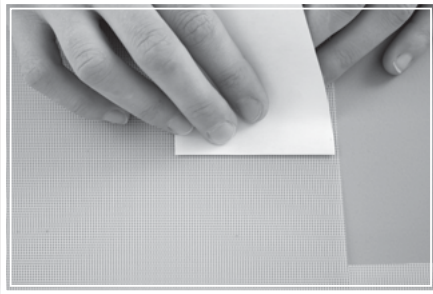
B. Cutting out the headpiece

It is best to have a complete headpiece pattern. For many years, covering makers have used half headpieces and folded their fabric. This causes three problems:

- ✂ The folded fabric leaves a fold line across the center of the headpiece.
- ✂ If the pattern shifts one way or another, the measurements change at the center top of the headpiece, creating problems.
- ✂ Some ladies, because of the way their ears are positioned or their head is shaped, need a right and a left headpiece (one side different from the other). A full headpiece makes this possible.

Step 1. With the pattern folded in half, line up the center top halfway across a row of holes.

Step 2. Carefully unfold and pin with at least three pins.



Step 1

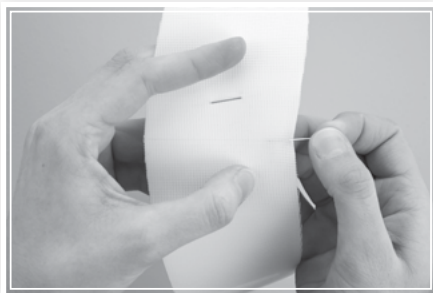


Step 2

Step 3. Make sure no fabric is bunched up under the pattern. To check, start at the center and run your finger down across the headpiece. No fabric should be running ahead of your finger.

Step 4. Carefully cut close to the pattern.

Step 5. Mark the center top by taking the pins you placed in the tails of the headpiece and putting them in the center (5a), on either side of the headpiece (5b). Poke through the fabric, not the paper. (I do not notch at the center top because it weakens the fabric. You only have $\frac{1}{8}$ " seams and if $\frac{1}{16}$ " of it is gone, the strength goes too.)



Step 5a



Step 5b

Step 6. Remove any remaining pins.

Step 7. If the headpiece has a different right and left side, place a pin in one side of the pattern, pointing down to the left (or right). Anytime you cut out the headpiece, always place a pin on that same side in the material to keep the sides from getting mixed up.

C. Cutting the band

If you cut the band on the bias, cut an entire width of fabric for bands. It should be 18" long to have sufficient fabric for a 26" long band. You can cut a crown out of the triangles leftover, to save material. Use a rotary cutter and yardstick or ruler to cut the band on an exact 45 degree angle.

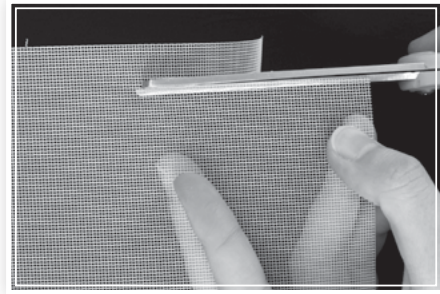
If you cut the band on the straight grain, always keep one edge of the fabric for bands. Cut a strip 4 ½ - 5 ½" wide by 26" long, and then cut the bands off that. The width of the strip you cut will vary in proportion to the width of the fabric. The narrower the fabric, the less coverings per yard, and the narrower the strip will be cut.

Step 1. Cut a band from the band strip about ⅝" wide and 25-26" long so that you have plenty of length to work with, especially if you are adding tucks in the band for corners.

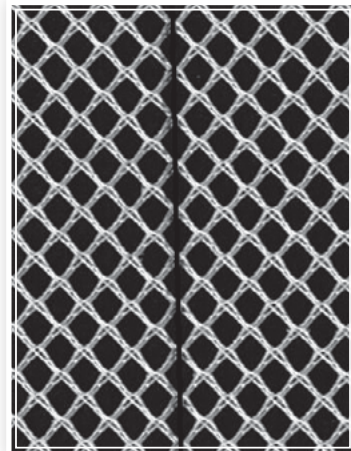
Step 2. Cut the band along the straight (lengthwise) grain of the fabric. Square-holed fabrics cut easily between two lines. Diamond-holed fabrics get cut on the joint of two diamonds. Tip: For square-holed fabrics, "lock" the scissors at one spot and zip through. If the scissors come against, it is trying to jump a line. Just redirect the blade and keep going!

Step 3. Roll up the band strip and pin it. It will be more manageable for storing.

You should now have three pieces: crown, headpiece, and band.



Step 1



Diamond-holed cutting line

Pressing the Pleats

Irons vary in temperature, but a setting in the polyester-wool range works well. Use a dry iron, as bursts of steam from the iron can make ripples in the fabric.

A. Press the first press line.

Step 1. With the crown pattern still fastened to the fabric, finger crease the first pleat on the right side of center top to get the pleat fold started. Place the pleat on the block with the pleat point at the very edge of the block (1a). Press the first press line, sliding the edge of iron, not the tip, along the pleat. Press the crease very sharply out to a distinct point and then pull the iron back across the pleat (1b). As you come back across, lift the

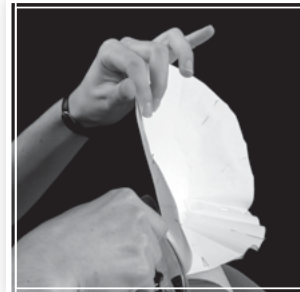


Step 1a

loose edge of the pattern (1c). This will give the pleat the natural bend to turn over. For this to be effective, be sure to press on the underside of the first press line, so the pleat will want to turn the right way.



Step 1b



Step 1c

Do not finger press beyond the end of the pleat into the circle. This is the chief cause of pleats extending beyond the stopping point. The circle is NO-ZONE! If you have trouble seeing where the pleats end, you are likely not pressing the pleat point distinctly enough.

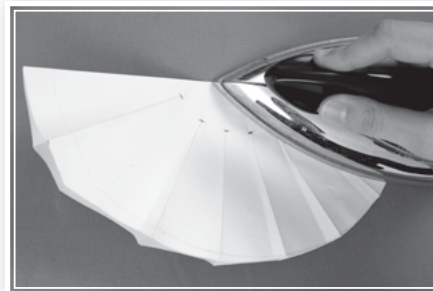
Step 2. Press all the pleat lines.

Step 3. Place a pin in the material in line with the center top crease of the pattern to mark the center. Keep it there till you pin your headpiece on. Unpin the pattern from the fabric.

Step 4. Fold the pattern in half and iron it flat. Ironing keeps the pattern nice for future use.



Step 3



Step 4

B. Fold and press the pleats.

Many people like to pin their pleats in, measure them, and then press them. Unfortunately, pressing often changes the measurement slightly. I will show you another way.

Step 1. Look at a covering from the same pattern to help you determine how deep to fold your pleats over. This varies greatly from shallow coverings to deep coverings. The number of pleats also factors in. For example, a pattern with seven pleats will have much wider pleats than a pattern with eleven pleats.