

Pentime Cursive is designed to provide cursive handwriting skills with a minimum of teacher supervision. However, it is necessary for teachers to watch the students' progress carefully.

We hope students will enjoy the essays on wildlife and nature and will be inspired by the color plate on the back cover of the book to try their skills in coloring the pictures.

The poem sheets are designed for students to color and remove, using them as mottos, or putting them in a folder for a keepsake.

The sheet containing the slant lines may be tucked under the pages on the right hand side of the book as a guide to proper slant.

This book is intended to provide necessary writing skills and a new insight on wildlife and nature.

We sincerely thank all the students who wrote essays for this publication and everyone who helped in any way to make the printing of this workbook possible.

Happy writing!

*Pentime Publishers*

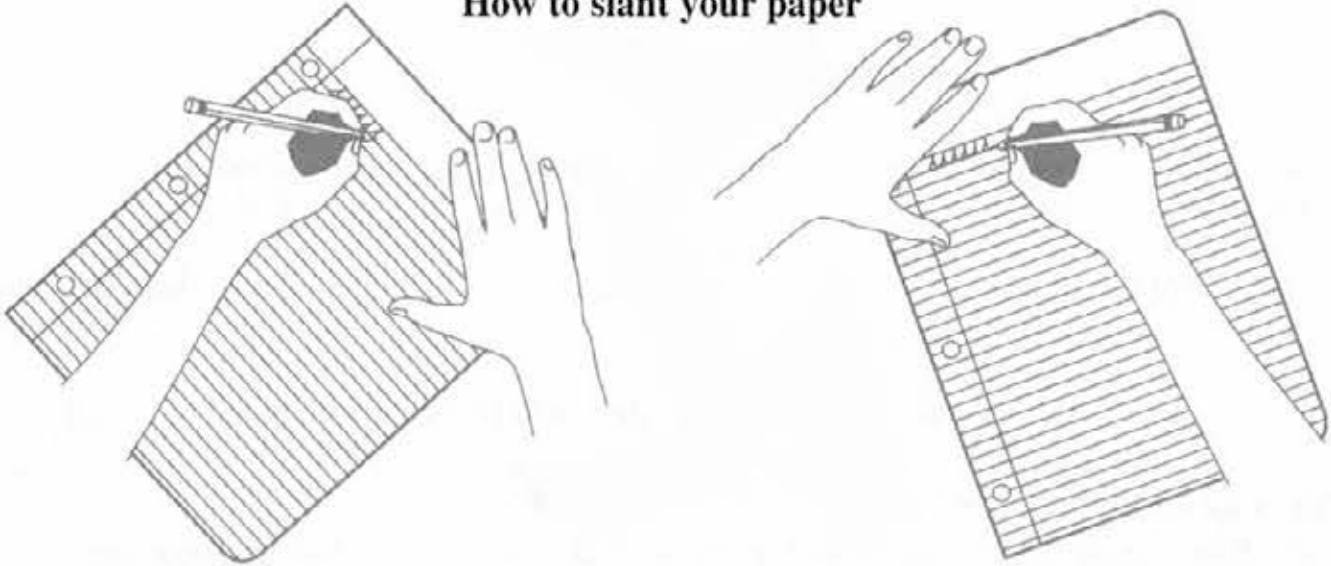


©Pentime Publishers 2000. All rights reserved.  
Reprinted 2020.

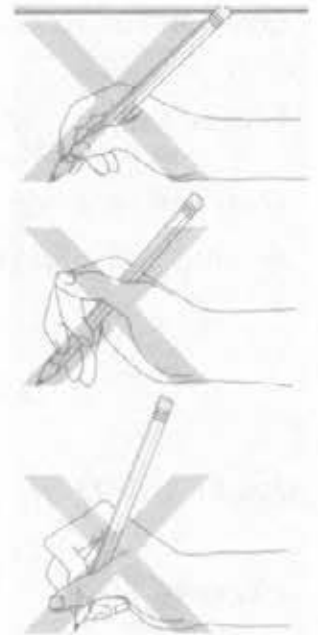
**Pentime Publishers**  
**2044 CR 1800 E.**  
**Arthur, IL 61911**

*Typeset by:* JKL Services • Jeane Lambeth • Arcola, IL 61910  
Copyrighted material. May not be reproduced without permission from the publisher.

## How to slant your paper



- Place your paper at the same angle as the arm that you use for writing. (see illustrations). Move the page up as the writing nears the bottom of the page.
- If you are left-handed, hold your pencil at least half an inch above the sharpened point. This combined with the correct paper slant will enable you to better see what you are writing.



### Pencil Position

- Hold your pencil loosely between your thumb and index finger, letting it rest on your middle finger.
- Do not let your fingers slip down to the sharpened part of the pencil.
- Gripping your pencil too tightly keeps your writing from flowing smoothly.

### Body Position

- Sit comfortably back in your seat with both feet flat on the floor and face straight ahead.
- Rest both arms on your desk. Hold your paper with the free hand.
- Your eyes should not be too close to your paper. (10-15 inches from your paper is ideal.)

# Letter Group Charts

Cursive writing has three basic strokes - the undercurve, the overcurve and the downcurve, as demonstrated by this form:

*u* - undercurve

*m* - overcurve

*a* - downcurve

**Lower case letters are divided into five categories:**

**Upper Loop Letters:** *e l b h k f*

These all start on the baseline with an undercurve line making a loop like a lasso and returning to baseline.

**Downcurve Oval Letters:** *a d g q o c*

**Undercurve:** *i u j s r w f t*

These all start on the baseline and curve upward. On some of them you need to retrace.

**Overcurve:** *m n v y x z*

**Lower Loop:** *p q j n y z g f*

These with the exception of *p* are all found in other groups. They are all in this group because of the lower loop which drops down below the baseline.

**The capital cursive letters are divided into five groups:**

**Backwards Oval:** *O C E A D*

**Forward Oval:** *P B R*

**Upper Loop Letters:** *J L I*

**Boat Endings:** *B I G S T F*

**Cane Stem:** *H K M N W X U V Y Z*

The "Cane-stem" is the small loop near the top line that begins the capital letter. The stroke resembles a walking cane.

## Pentime Cursive

Aa Bb Cc Dd Ee Ff Gg

Hh Ii Jj Kk Ll Mm

Nn Oo Pp Qq Rr Ss Tt

Uu Vv Ww Xx Yy Zz

1 2 3 4 5 6 7 8 9 0

## Pentime Manuscript

Aa Bb Cc Dd Ee Ff Gg

Hh Ii Jj Kk Ll Mm Nn Oo

Pp Qq Rr Ss Tt Uu Vv

Ww Xx Yy Zz

1 2 3 4 5 6 7 8 9 0

Name: \_\_\_\_\_



After a long vacation from writing, are you ready to get started? Be sure to read the instructions on the first page of this book for proper paper, body, and pencil position. Learning proper positions will help your handwriting at all times. Practice these words and letters below.

Gray

berries

fruits

nuts

known

hollow

leaves

Squirrels

make

homes

twigs

their

E

G

L

K

Using your best manuscript writing, print this saying on the lines below.

Kindness is one thing you can't give away - it always comes back



Eastern Gray Squirrels eat berries, corn, fruits, and nuts. They are known to store their food in hollow logs and under leaves and brush. Squirrels make their homes in nests made of twigs or in tree hollows.

#### GRAY SQUIRREL

The most familiar mammal of eastern North America. Abundant in city parks, suburbs, and woodlands. Gray with white underparts, it has a tawny wash in summer. It stores nuts and acorns in the ground, many of which grow into trees. People put out squirrel seed in the winter only to find birds stealing most of it. Black or white individuals are sometimes seen.

Copy the above paragraph onto the lines below..

Handwriting practice lines consisting of multiple sets of three horizontal lines (top, middle, bottom) with a dashed midline for letter height guidance.

Name: \_\_\_\_\_



Is your posture proper for writing? Capital *B* starts up on centerline, makes a downstroke and retraces to the top where it makes a forward oval and has a boat ending. Practice these words carefully.

Bald

Eagles

looks

covered

feathers

cliffs

trees

year

sticks

weeds

earth

more

each

It

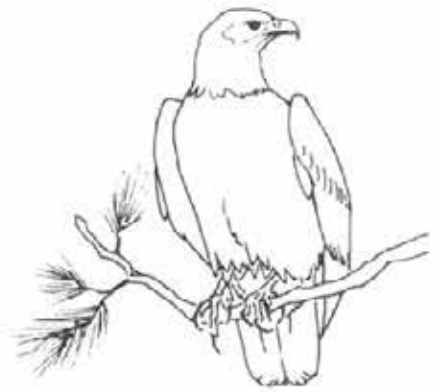
Using your best manuscript writing, print this saying on the lines below.

You can increase your face value with a smile.





## Bald Eagle



The Bald Eagle is not really bald. It looks bald because its head is covered with white feathers. Bald Eagles build nests in trees and cliffs, and add to them each year using sticks, weeds, and earth until it weighs 1,000 pounds or more.

### BALD EAGLE

Our national bird - easily recognized by its white head and tail, dark brown body, and yellow legs and beak. (The head and most of the tail are dark in immature birds.) Some people think this bird should have been named the American Sea-Eagle because it is more like a fishing vulture in its feeding habits.

Copy the above paragraph onto the lines below.

Handwriting practice lines consisting of multiple sets of solid top and bottom lines with a dashed midline.





Tillie's Checkpoint	Good	Fair	Poor
Letter Formation			
Letter Size			
Neatness			

Don't forget to watch your slant. The slant sheet in the back may be slipped under the next page to help you.

However, try to get it correct on this page without the sheet. Watch the *nn* and *uu* combinations on this page.

adult

very

popular

ashy

above

rich

chocolate

blue

yellow

hibernates

sunny

midwinter

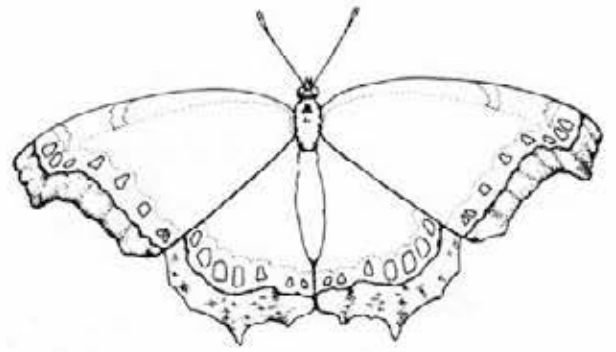
rims

*n*

*u*

Using your best manuscript writing, print this saying on the lines below.

It does a man no good to sit up and take notice if he keeps on sitting.



The Mourning Cloak is a very popular butterfly named for its ashy black underside. Above, it is rich chocolate with blue spots and yellow rims. Since it hibernates as an adult butterfly, it may be seen on sunny days in midwinter.

#### MOURNING CLOAK

Nothing else looks like a Mourning Cloak, well known by sight if not by name. The body and the larger part of the wings are deep chocolate brown with maroon reflections. Long rows of deep blue spots run all around the wings just inside the light yellow borders. Actually a tortoiseshell, the Mourning Cloak flies all over and likes elms and willows.

Copy the above paragraph onto the lines below.

Handwriting practice lines consisting of multiple sets of solid top and bottom lines with a dashed midline.