

MUSIC BOOK THREE

I. Notes and Rests	1
II. The G Clef	22
III. The Scale	43

2021 Printing

The material in this book is the product of the
Lord's blessing and many individuals working together
at Christian Light Publications.

CLP copyright ©1987
All rights reserved. Revised.

Christian Light Publications, Inc.

Harrisonburg, Virginia 22802

Tel. 1-540-434-0768

Printed in USA

MUSIC BOOK THREE

"O sing unto the LORD a new song" (Psalm 96:1).

Do you like new songs?



How do you learn new songs?

We learn about music so we can learn new songs.

I. Notes and Rests

Note names:	DO	RE	MI	FA	SO	LA	TI	DO
Note shapes:	△	∪	◇	▽	○	□	▽	△
Note numbers:	1	2	3	4	5	6	7	8



Cross out the one wrong thing in each box.

1.	2.	3.	4.	5.	6.	7.
△ 1	◇ RE	MI 3	▽ 5	○ SO	LA □	7 MI
2 DO	2 ∪	◇ FA	FA 4	□ 5	7 6	TI ▽



Circle the correct name for each note.



1. DO SO LA 2. ME LA MI 3. TI DO RE 4. LA FA SO



5. RE RA RI 6. RE LA SO 7. TI FA LA 8. TE TI TA



Circle the correct number for each note.



1. 1 2 3 2. 4 5 6 3. 4 7 1 4. 3 2 6



5. 7 6 5 6. 3 8 2 7. 2 4 6 8. 3 4 5



Fill in the missing words.

"O _____ unto the _____ a _____ song" (Psalm 96:1).



Complete these activities.

Match the note to the correct number.

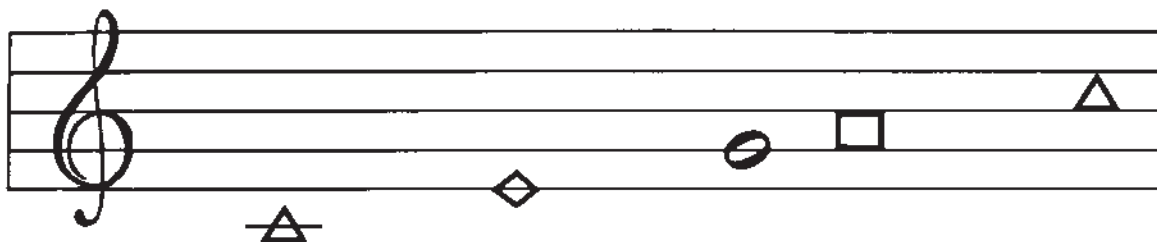
△	3
▽	6
□	5
○	4
▽	7
◇	1
⊔	2
△	8

Match the note to the correct name.

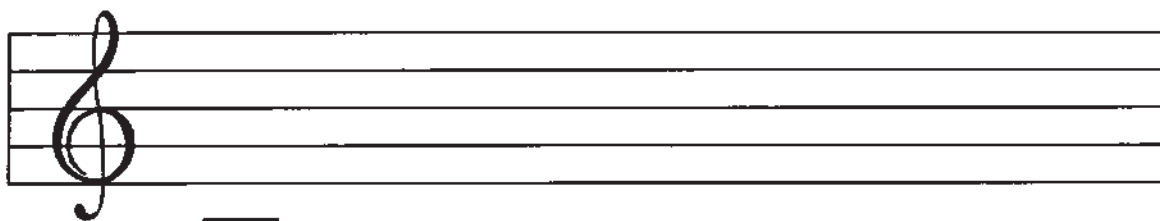
▽	LA
□	FA
○	TI
▽	SO
◇	MI
⊔	DO
△	RE



Fill in the missing notes in the scale.










Draw each note of the scale. (Start with low DO on the ledger line.)





Circle the correct spelling for each note.

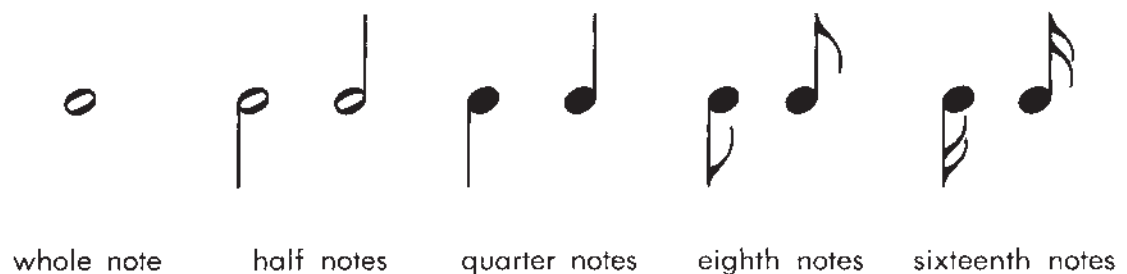
- | | |
|--|--|
| 1.  DO DA DI DE | 5.  SO SA SI SE |
| 2.  RO RA RI RE | 6.  LO LA LI LE |
| 3.  MO MA MI ME | 7.  TO TA TI TE |
| 4.  FO FA FI FE | |



Fill in the missing words.

"O sing _____ LORD a _____"
(Psalm 96:1).

There are different kinds of notes.



Whole notes are very slow. We sing them very slowly.
Whole notes are white inside.

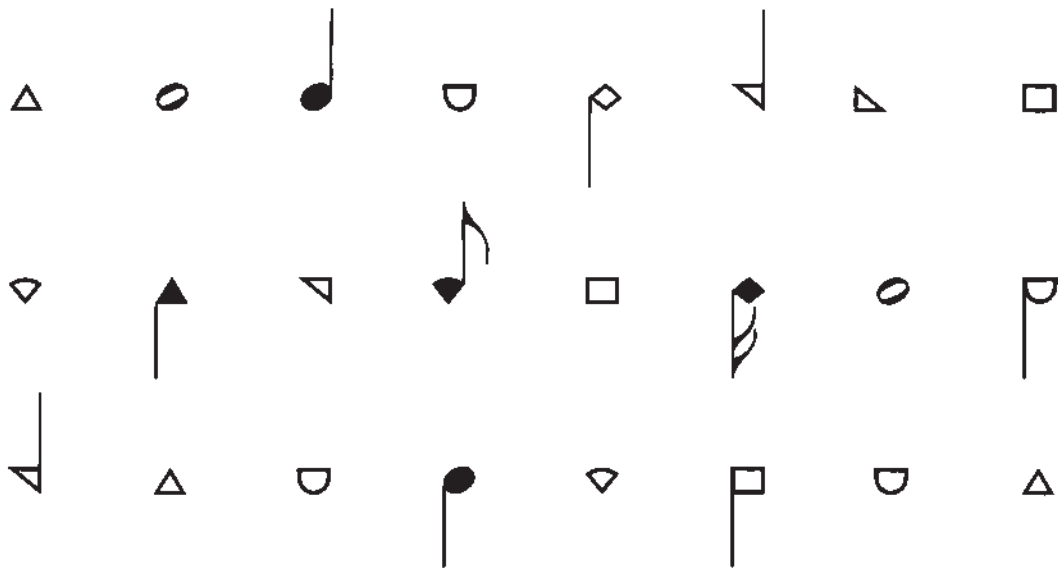


Whole notes have only a head—no stem, no flag.
Any shape of note can be a whole note:





Circle all the whole notes.



Half notes are slow, but not as slow as whole notes.

Half notes are white inside.

Half notes have a stem, but no flag.

Any shape of note can be a half note:



Circle all the half notes.

