

MUSIC BOOK FIVE

I. The Scale	1
II. Key Signatures	17
III. Beating Time	39

2020 Printing

The material in this book is the product of the
Lord's blessing and many individuals working together
at Christian Light Publications.

CLP copyright ©1989
All rights reserved. Revised

Christian Light Publications, Inc.

Harrisonburg, Virginia 22802

Tel. 1-540-434-0768

Printed in USA

MUSIC BOOK FIVE

"I will praise thee, O LORD, with my whole heart; I will shew forth all thy marvellous works" (Psalm 9:1).

God gave us voices to sing. He wants us to use them to praise Him.

When we sing praises to God, should we slump down and mumble along in a halfhearted way? No! God wants us to sing praises with our whole heart.

So join in and learn more about music. God will bless you, and you will enjoy singing.



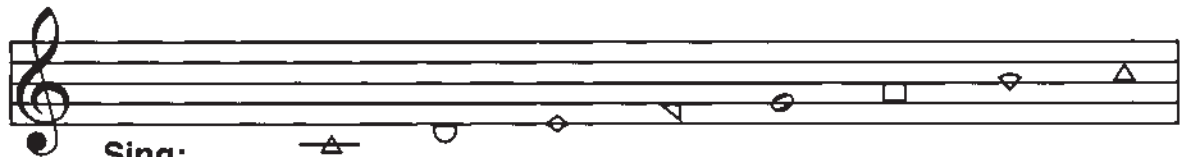
Write Psalm 9:1.

"I _____
_____."

I. The Scale

To learn to sing well, we must know the scale well.

Can you sing the scale?



Sing:

Read:

DO RE MI FA SO LA TI DO

Count:

1 2 3 4 5 6 7 8

The scale has shapes.
The scale has names.
The scale has numbers.



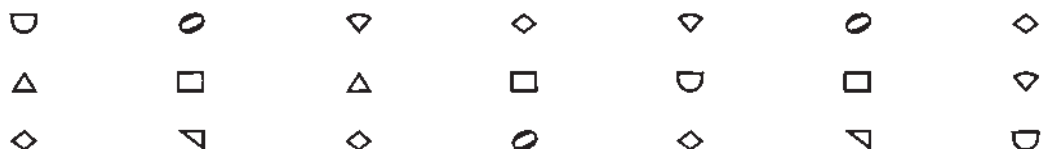
Write the names of the scale in order. (Watch your spelling.)

1. _____ 2. _____ 3. _____ 4. _____ 5. _____ 6. _____ 7. _____ 8. _____

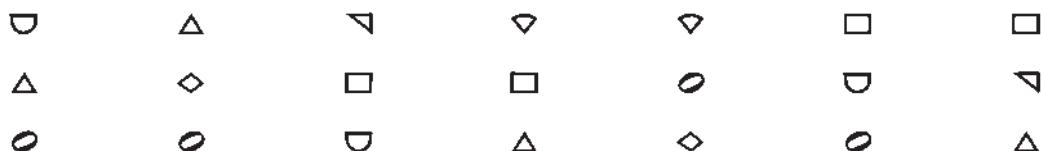


Look at the note name and circle the correct shape below it.

1. DO 2. FA 3. TI 4. SO 5. RE 6. LA 7. MI



8. RE 9. MI 10. LA 11. DO 12. TI 13. SO 14. FA



Write the note numbers under the notes.



1. ____ 2. ____ 3. ____ 4. ____ 5. ____ 6. ____ 7. ____ 8. ____



9. ____ 10. ____ 11. ____ 12. ____ 13. ____ 14. ____ 15. ____ 16. ____



17. ____ 18. ____ 19. ____ 20. ____ 21. ____ 22. ____ 23. ____ 24. ____



25. ____ 26. ____ 27. ____ 28. ____ 29. ____ 30. ____ 31. ____ 32. ____



Circle the correct spelling for each note.

1. DO DE DA DI 5. SO SE SA SI

2. RO RE RA RI 6. LO LE LA LI

3. MO ME MA MI 7. TO TE TA TI

4. FO FE FA FI



Fill in the blanks.

1. DO rhymes with _____ (another note name).
2. MI rhymes with _____ .
3. FA rhymes with _____ .
4. "I will _____ thee; O _____ , with _____ whole _____ ;
I _____ forth _____ thy marvellous _____"
(Psalm 9:1).
5. The scale helps us to _____ the Lord.

Some notes of the scale are more important.

DO is the most important note in the scale. It is the "home note." The scale starts and ends with DO.

MI and SO are also important. When low DO is on a line, MI and SO are also on a line.



Draw MI and SO where they belong. (Be sure the line goes right *through* the note.)



When low DO is on a line, high DO is on a space.



Draw the scale and answer the questions. (Be sure to place the notes correctly on the lines and spaces. See page 1 if you need help.)



1. Is low DO on a line or on a space? _____
2. Is MI on a line or on a space? _____
3. Is SO on a line or on a space? _____
4. Is high DO on a line or on a space? _____
5. Which note in the scale is most important? _____

6. What are the names of the important notes (in order)?

a. _____ b. _____ c. _____ d. _____

7. What are the numbers of the important notes?

a. _____ b. _____ c. _____ d. _____

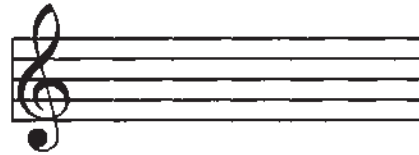


Sing the names of the important notes, then sing the numbers.



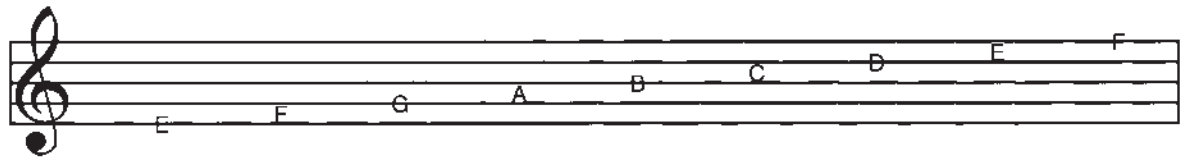
Fill in the missing notes in the scale above.

This is the staff with the G clef:



sopranos
altos

The notes for the sopranos and altos are on the G staff. Each line and space of the staff is called a degree. The lines and spaces have letters.



Write the letters of the spaces.

Bottom to top: 1. _____ 2. _____ 3. _____ 4. _____



Write the letters of the lines.

Bottom to top: 1. _____ 2. _____ 3. _____ 4. _____ 5. _____



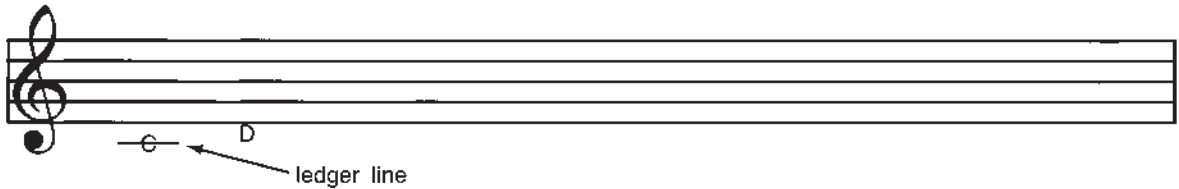
Write the letter of each degree on this staff.



We can add lines to the staff. The lines we add are called *ledger lines*.



Finish lettering the lines and spaces.



When we letter the lines and spaces, we use letters A—G. After G, we start over with A.



Answer these questions.

1. Where are the notes for the sopranos? _____ staff
2. Where are the notes for the altos? _____ staff
3. What are lines called that are added to the staff? _____
4. What is the letter of the bottom line of the staff? _____
5. What is the letter of the middle line? _____
6. What is the letter of the top line? _____
7. What is the letter of the first line below the G staff? _____
8. What letters are used for the lines and spaces? a. _____ to b. _____
9. When we letter the lines, what letter is used after G? _____
10. How many letters are used? _____
11. How many different notes are there in the scale (count DO only once)?

12. When we sing up the scale to TI, what note comes next? _____
13. What is each line and space called? _____



Fill in the missing words.

"I _____ praise _____, _____, with _____
heart; I _____ all thy _____
_____." (Psalm 9:1).