

# MUSIC BOOK SEVEN

<b>I. The Scale .....</b>	<b>2</b>
<b>II. Understanding Pitch .....</b>	<b>14</b>
<b>III. Understanding Timing .....</b>	<b>27</b>

2017 Printing

The material in this book is the product of the  
Lord's blessing and many individuals working together  
at Christian Light Publications.

CLP copyright ©1989  
All rights reserved

**Christian Light Publications, Inc.**

Harrisonburg, Virginia 22802

Tel. 1-540-434-0768

Printed in USA

## MUSIC BOOK SEVEN



**Turn to Psalm 148 and answer these questions.**

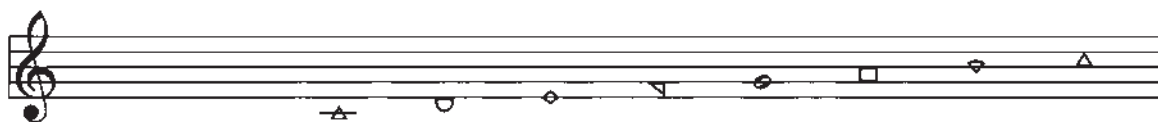
1. What are the opening words of the psalm? \_\_\_\_\_
2. What are the closing words? \_\_\_\_\_
3. Who is to praise the Lord in verse 2? \_\_\_\_\_
4. What is to praise the Lord (v. 3)? \_\_\_\_\_
5. Why, according to verse 5? \_\_\_\_\_
6. Name five other things from nature mentioned in this psalm that should praise the Lord.
  - a. \_\_\_\_\_
  - b. \_\_\_\_\_
  - c. \_\_\_\_\_
  - d. \_\_\_\_\_
  - e. \_\_\_\_\_
7. Who is specifically named to praise the Lord (vv. 11, 12)?
  - a. \_\_\_\_\_
  - b. \_\_\_\_\_
  - c. \_\_\_\_\_
  - d. \_\_\_\_\_
  - e. \_\_\_\_\_
  - f. \_\_\_\_\_
  - g. \_\_\_\_\_
  - h. \_\_\_\_\_
8. Is anyone left out? \_\_\_\_\_
9. What two reasons for praising the Lord are given in verse 13?
  - a. \_\_\_\_\_
  - b. \_\_\_\_\_



**Find Psalm 150:6 and write it here.**

"Let \_\_\_\_\_  
\_\_\_\_\_."

# I. The Scale



Sing the scale:

Read the scale: DO RE MI FA SO LA TI DO

Count the scale: 1 2 3 4 5 6 7 8



Under each number, draw the correct shape.

1                  3                  5                  8                  2                  4                  6                  7

1.                  2.                  3.                  4.                  5.                  6.                  7.                  8.



Under each note, circle the correct spelling.

1. Δ                  2. ▤                  3. ◇                  4. ▴                  5. ○                  6. □                  7. ▼

DO                  RO                  MO                  FO                  SO                  LO                  TO

DA                  RA                  MA                  FA                  SA                  LA                  TA

DE                  RE                  ME                  FE                  SE                  LE                  TE

DI                  RI                  MI                  FI                  SI                  LI                  TI



Draw the scale with low DO starting on the ledger line.



Write the names of the scale going up.

1. \_\_\_\_\_ 2. \_\_\_\_\_ 3. \_\_\_\_\_ 4. \_\_\_\_\_ 5. \_\_\_\_\_ 6. \_\_\_\_\_ 7. \_\_\_\_\_ 8. \_\_\_\_\_

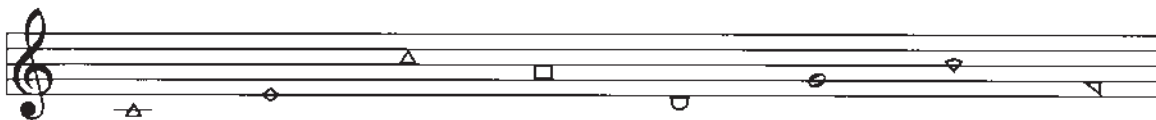


**Write the names of the scale going down.**

1. \_\_\_\_\_ 2. \_\_\_\_\_ 3. \_\_\_\_\_ 4. \_\_\_\_\_ 5. \_\_\_\_\_ 6. \_\_\_\_\_ 7. \_\_\_\_\_ 8. \_\_\_\_\_



**Under each note, write the correct number.**



1. \_\_\_\_\_ 2. \_\_\_\_\_ 3. \_\_\_\_\_ 4. \_\_\_\_\_ 5. \_\_\_\_\_ 6. \_\_\_\_\_ 7. \_\_\_\_\_ 8. \_\_\_\_\_



**Answer these questions.**

1. What note is used twice in the scale? \_\_\_\_\_
2. What is note number 3? \_\_\_\_\_
3. What number is SO? \_\_\_\_\_

DO is the most important note in the scale. It is often called the home note of the scale. MI and SO are also important notes. You should remember these notes. Most songs start on DO, MI, or SO.

There are two places where the scale has only half steps between notes. The rest of the notes have a full step between.



**Do these activities.**

1. Sing the scale slowly and listen carefully when you come to the arrows.



2. Going up, where is the first half step? between \_\_\_\_\_
3. Going up, where is the second half step? between \_\_\_\_\_
4. Divide the scale in half with a line.
5. Sing the first half.
6. Sing the second half.
7. Are the half steps at the same place in both halves? \_\_\_\_\_



**Fill in the blanks with *whole* or *half*.**

1. There is a \_\_\_\_\_ step between DO and RE.
2. There is a \_\_\_\_\_ step between RE and MI.
3. There is a \_\_\_\_\_ step between MI and FA.
4. There is a \_\_\_\_\_ step between FA and SO.
5. There is a \_\_\_\_\_ step between SO and LA.
6. There is a \_\_\_\_\_ step between LA and TI.
7. There is a \_\_\_\_\_ step between TI and DO.



**Complete this verse.**

"Let \_\_\_\_\_ thing that \_\_\_\_\_ praise \_\_\_\_\_ .  
\_\_\_\_\_ ye the \_\_\_\_\_" (Psalm 150:6).

Any scale with eight tones is a *diatonic* scale. The eight-tone scale built on DO is called the *diatonic major scale* (or just the major scale). It has one-half step between MI and FA and another half step between TI and DO. The rest of the notes in the major scale have a full step between them.

By adding sharps, we can go up the scale by half steps. Whenever a note is sharped, its spelling changes. The first letter is the same, but the last letter is *i*. For example, DO becomes DI (pronounced DEE).



**Spell the names of the sharped notes and answer the questions.**



DO 1. \_\_\_\_\_ RE 2. \_\_\_\_\_ MI FA 3. \_\_\_\_\_ SO 4. \_\_\_\_\_ LA 5. \_\_\_\_\_ TI DO

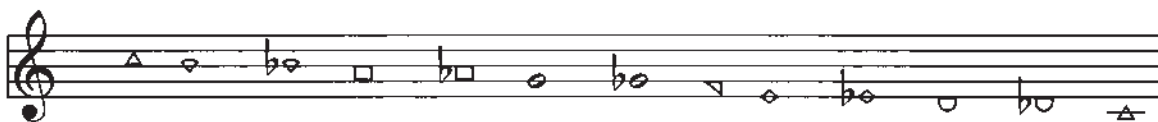
6. Which two notes were not sharped? \_\_\_\_\_ , \_\_\_\_\_
7. Is there a whole or a half step from MI to FA? \_\_\_\_\_
8. Is there a whole or a half step from TI to DO? \_\_\_\_\_
9. How many half steps are in the diatonic major scale? \_\_\_\_\_
10. When we go up the scale by half steps, how many tones are there? \_\_\_\_\_
11. What is the most important note of the major scale? \_\_\_\_\_

12. Which two other notes are also important? a. \_\_\_\_\_ b. \_\_\_\_\_
13. How many times is DO used in the diatonic major scale? \_\_\_\_\_
14. What are the numbers of the four important notes of the major scale a. \_\_\_\_\_  
b. \_\_\_\_\_ c. \_\_\_\_\_ d. \_\_\_\_\_

By adding flats, we can go down the scale by half steps. Whenever a note is flatted, its spelling changes. The first letter is the same, but the last letter is *e*. For example, TI becomes TE (pronounced TAY). The only exception to this is RE. Since RE already is spelled with an *e*, we spell a flatted RE with an *a*—RA (pronounced RAH).



**Spell the name of each flatted note and answer the questions.**



DO TI 1. \_\_\_\_\_ LA 2. \_\_\_\_\_ SO 3. \_\_\_\_\_ FA MI 4. \_\_\_\_\_ RE 5. \_\_\_\_\_ DO

6. Which two notes were not flatted? a. \_\_\_\_\_ b. \_\_\_\_\_
7. Is there a whole step or a half step between DO and TI? \_\_\_\_\_
8. Is there a whole step or a half step between FA and MI? \_\_\_\_\_
9. What is the scale called without any flats or sharps? \_\_\_\_\_
10. How many tones are there when we sing down the scale by half steps? \_\_\_\_\_
11. Which note is not spelled with an *e* when it is flatted? \_\_\_\_\_
12. Why not? \_\_\_\_\_

The scale ascending and descending by half steps is called the *chromatic scale*. It has 13 tones going up and 13 tones coming down.



**Write the name of each note.**



1. \_\_\_\_\_ 2. \_\_\_\_\_ 3. \_\_\_\_\_ 4. \_\_\_\_\_ 5. \_\_\_\_\_ 6. \_\_\_\_\_ 7. \_\_\_\_\_ 8. \_\_\_\_\_ 9. \_\_\_\_\_ 10. \_\_\_\_\_