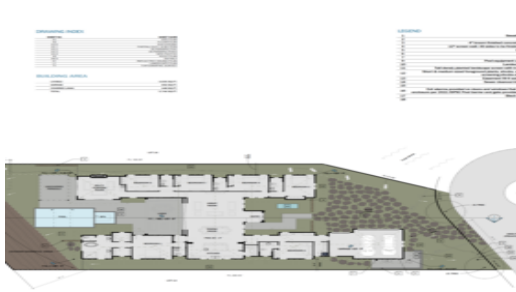


1 FLOOR PLAN  
SCALE: 3/16" = 1'-0"



# 68-1304 AKEA PL

Land for Sale in **Kohala Coast**, Big Island | MLS **719701**

**16,522** **\$1,275,000**  
sqft land listing price

This highly desirable, private, and shovel-ready homesite comes with HOA approval and a building permit ready to pull - will save you both time and money. The approved plans include five bedrooms, five-and-a-half bathrooms, a flex room/home theater, and upscale finishes spanning 4,606 square feet of interior living (5,746 square feet under roof), along with a three-car garage, swimming pool, and spa.

Nestled alongside the Mauna Lani North Golf Course and just moments from the

Listed by **COMPASS**



**HAWAI'I LIFE**  
REAL ESTATE BROKERS

Statewide Customer Support  
Offices on All Islands

**HawaiiLife.com**

**(800)667-5028** call or text

**re@HawaiiLife.com** email support