

**ROTTLER**  
THE CUTTING EDGE

# SG10S

## Cylinder Head Seat & Guide Machine

**Unipilot**<sup>®</sup>

*The Speed of Live and  
the Accuracy of Fixed*

**NEW**

**Newly built-in  
Guide Honing Kit**



Machining Equipment  
Created for Performance  
Racing & Engine  
Remanufacturing.

So Advanced, It's Simple.

### THE VALVE GUIDE

- You cannot produce accurate valve seats if you do not first finish guide bores accurately!
- If the reference point for the seat is sub par, the seat quality will suffer.

**Remember...the valve guide is the guide, not the seat !**

**Achieve Guide Honing within 0.0001"**



# SG10S CYLINDER HEAD SEAT & GUIDE MACHINE WITH BUILT IN GUIDE HONING

## New SG10S MANUALMATIC Touch Screen Control

SG10 S machines utilize proven patented UNIPILOT tooling featuring 2 modes of operation:

**MANUALMATIC:** Productivity increases of 30% to 50% are experienced due to the new concept of MANUALMATIC operation. Buttons and switches have been eliminated saving operator time. Feed the spindle and Rottler intuitive control easily manages functions such as workhead float/clamp, valve guide pilot centering and spindle power. When seat depth is reached, MANUALMATIC changes the spindle RPM automatically for exacting finishes.

**MANUAL MODE:** Touch Screen Controls utilize proven Rottler Intuitive SG10 Software that displays spindle vertical position vividly on the screen eliminating external dial gauges. Feeding the spindle to the valve seat sets the cutting insert to zero. A quick touch sets the zero position allowing the Digital Display to show exact spindle position at all times. Workhead clamp and float pedals are eliminated saving valuable operator time. Low to High finishing speed transitions are controlled by separate buttons on the touch screen for manual operation.

## Fast & Accurate

Heavy duty SG10 S workheads are robust with the capability to machine large diameter valve seats. The lightweight design is engineered for speed and accurate centering creating the ultimate concentricity.

## Precision Seat Cutting Inserts

Rottler's Precision CNC Ground Fine Grain Carbide Seat Cutting Inserts are substantially faster and less expensive than grinding. Inserts eliminate the need to purchase a different grinding stone for every angle. Rottler manufactures inserts in single and multi-angle. Curved and radius shapes are available.

## Storage Cabinet

Three Drawers and Top Tray allow for convenient storage of a wide selection of tooling available from Rottler.

## Built in Vacuum Tester

Quality check valve seats while the cylinder head is still set up on the machine!

## Optional 360° Rollover Fixture

360° roll provides quick and easy access to all sides of the head. Precision adjustments are accomplished fast using the Micro Adjust Feature. A cushion of air floats the fixture for fast easy set ups.

## Rigid Cast Iron Construction

Rottler SG10 S machines are manufactured from heavy thick wall cast iron. The all cast iron rigid platform is precision machined providing superior accuracy as compared to welded steel. Rigidity is vital in producing high quality chatter free valve seat cutting.

## Heavy Duty Base Cabinet

Extending the heavy duty base cabinet to the rear assists in safe handling during machine relocation. Foot clearance is provided for operator comfort.

Unipilot

POWERED  
BY

MANUALMATIC

## Variable Speed Spindle from 25 to 1000 RPM

Spindle Speed can be accurately selected for varying machining operations. Soft Touch Buttons and a bright digital display are located for ease of operation.

## Touch Screen Control Panel

The intuitive Rottler Touch Screen Control Panel is ergonomically placed at eye level for simple operation.

## Spindle Alignment

Vertical spindle alignment is controlled via the Pneumatic System switch to allow **UNIPILOT** Tooling to easily enter the valve guide.

## Dual Speed Spindle Feed

Rapid feed is accomplished through the large handwheel. Use the small handwheel to perform precise fine feed spindle control when depth of cut is required to attain extreme levels of accuracy.

## Adjustable Spindle Tilt & Depth Stop

Spindle tilts up to 15° from vertical, in both directions, providing quick alignment on all canted valve cylinder heads. Each seat is cut to identical depths for optimal performance of computer controlled engines.

## Automatic Spindle Lock Nut

Patented Spindle Locking Nut System automatically tightens tools in the spindle with a wrench free design. Secure tool installation and removal is nearly instantaneous.

## Large Diameter Spindle

3.150 inch (80mm) diameter heavy duty spindle assures rigidity for chatter free operation. Outer spindle support bearings are adjustable over the entire length of the bearing area. Superior High Precision Rottler design is built in for durable operation.

## Electronic Level

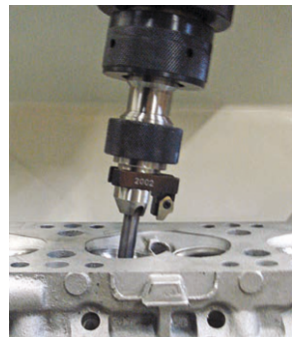
Digital readout provides clear feedback on the screen allowing for quick and accurate adjustments.

## Digital Depth Indicator

Digital Depth indication shows operators the exact amount of material that has been removed from the seat resulting in consistent seat depths. Operations such as installing seat rings, reducing valve guides, facing spring seats and more are benefited by digital accuracy. One Touch Zero saves operator time while ensuring accuracy.

## Air Float

The easy to use Rottler Touch Screen is designed to mirror manual operation. Air Float allows simple In/Out Adjustment of the 360° rotation fixture. Workhead clamping and Air Float are quickly controlled via the Touch Screen Control.



"MANUALMATIC removes wasted operator motion in flipping of switches and stepping on pedals. Additional gains in process repeatability creates less hard work which is a key metric in our high production environment. What does that mean at JASPER? Reduced Cycle Time = Reduced Cost.....bottom line".

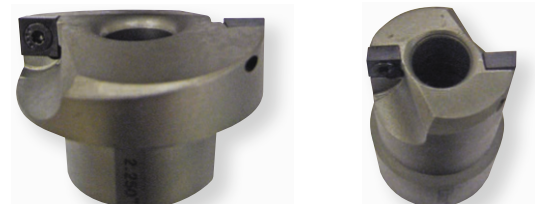
— CHUCK LYNCH





# UNIVERSAL TOOLING

Rottler makes an assortment of drivers for our patent pending Unipilot Tooling spindle system. Combined with our wide range of insert/bit holders, valve seats ranging from .550" to 3.25" (14mm to 80mm) and larger can be cut on the SG9MTS.



## Fixed Diameter Milling Heads

The engineered milling head bores the correct seat ring housing with press fit interference allowing for adjustment free installation. Four Corner Carbide Inserts are indexed to change out fast without readjusting. Rottler cutterheads can be re-used when inserts get dull reducing tooling and labor costs.

## Drilling & Taping Program

Automatic Spindle Reversing is built into the automatic drilling and tapping program included in the SG9MTS Control.



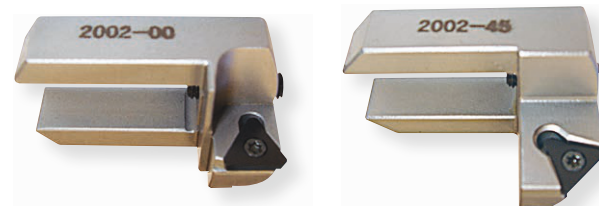
## Precision Collet Chuck

Allows holding of reamers, cutters, drills, taps and other tools for special machining operations.



## Universal Chuck

For general drilling and tapping work. Often used for spring seat and valve guide seal tooling.



## Triangle Tool Holders

Indexable Triangular Coated Carbide Tool Holders are available in 10°, 20°, 30° and 45°. Ideal and economical when cutting only one seat angle. Designed for boring old Rottler inserts and boring new insert housings.

## CBN Cutting Inserts

CBN triangular cutting inserts are now available for cutting extremely hard valve seat materials found in natural gas, biogas and alternate fuel engines



## Electronic Level

For precision leveling of valve guides (Canted Guide Fixture shown).



## Cutting Insert Sharpener

Rottler offers machine mounted diamond wheel cutting insert sharpeners for fast easy sharpening of multi-angle tool bits.

# UNIPILOT POWERED BY MANUALMATIC

**Unipilot** The Speed of Live and the **POWERED BY** Accuracy of Fixed

**MANUALMATIC**

Rottler **UNIPILOT** (patent pending) tooling loads securely into the Rottler Automatic Quick Clamping System holding the tooling in the spindle without the need for wrenches.

The **UNIPILOT** Tooling system allows the carbide **UNIPILOT** centralizing to work like a live pilot. **UNIPILOT** Tooling stays in the spindle while moving from valve guide to valve guide. Rottler **UNIPILOT** Tooling has a fixed pilot design to improve **CONCEN** eliminating clearance found in live pilots.

**UNIPILOT** The lower taper on the spring loaded easily enters the valve guide. The spring loaded upper area fixes and centers in the valve guide automatically eliminating clearance between the pilot and guide.

After cutting the valve seat, the spindle rises automatically when **MANUALMATIC** control is utilized. The **UNIPILOT** rises with the spindle ready to float over the head gasket fire decks in position to enter the next valve guide.

**UNIPILOT**, Powered By **MANUALMATIC**, creates accurate seat and guide work fast. Operators maintain Steering Wheel contact releasing only for the instant required for the floating Workhead to lock down automatically centered in the guide.

**MANUALMATIC** is designed for operators that are accustom to standard manual equipment. Rottler has created a Touch Screen that is easy operate on day one. Manual controls are simply placed on the Touch Screen and operators push screen buttons that mirror manual operation. The SG9MTS can be learned quickly even if operators have little computer experience. **MANUALMATIC** Mode combines standard seat and guide machining steps for efficiency and improved accuracy. So Advanced, It's Simple.

**CONCEN**

The **CONCEN** trademark is Rottler's promise of quality. **CONCEN** creates the most accurate and versatile seat and guide machines on the market today. The centering action of Rottler's Precision Carbide **UNIPILOT** System, supported on our balanced air float work head, give perfect centering in the valve guide. The Rottler combination creates the best **CONCEN** of valve seat to valve guide in the industry.



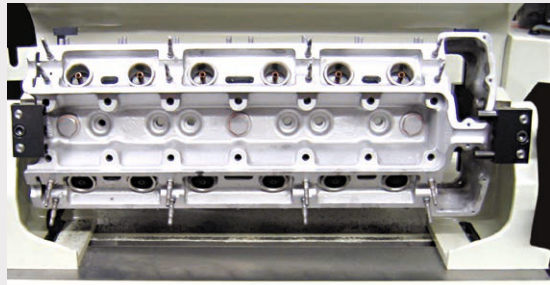
Rottler **MANUALMATIC** automates repetitive manual operations into one **MANUALMATIC** process. **UNIPILOT** Tooling, powered by **MANUALMATICCONCEN**, produces the best in the industry.

After entering your seat or guide requirements on the user friendly Touch Screen, a quick touch off and zeroing initiates **MANUALMATIC** operation. With zero set, **MANUALMATIC** manages spindle speed transitioning to finish RPM automatically.

**UNIPILOT** Tooling works in conjunction with **MANUALMATIC** to automate **CONCEN**. Finish machining completes and the Workhead floats automatically. Operators move the Workhead effortlessly on a cushion of air to the next operation allowing the patented **UNIPILOT** tooling to easily center into the next guide ready for **MANUALMATIC** to accurately repeat the process.

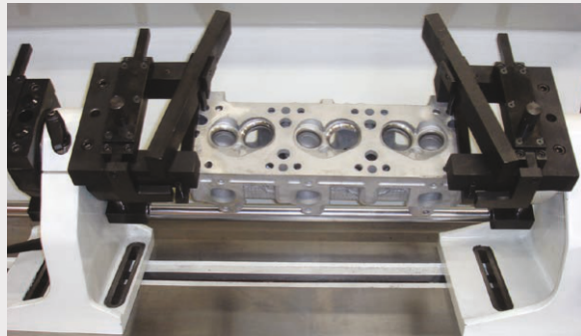
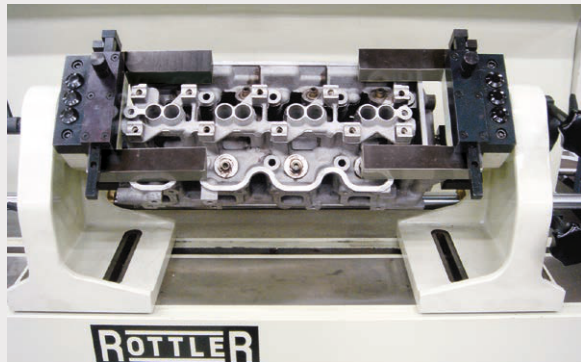
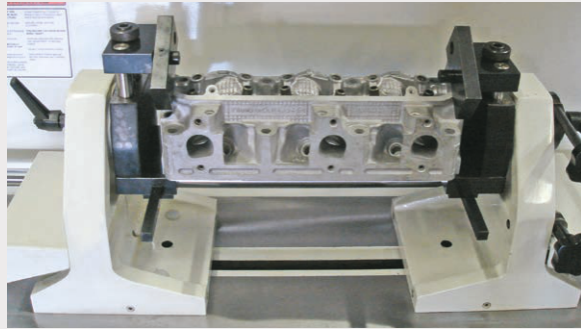
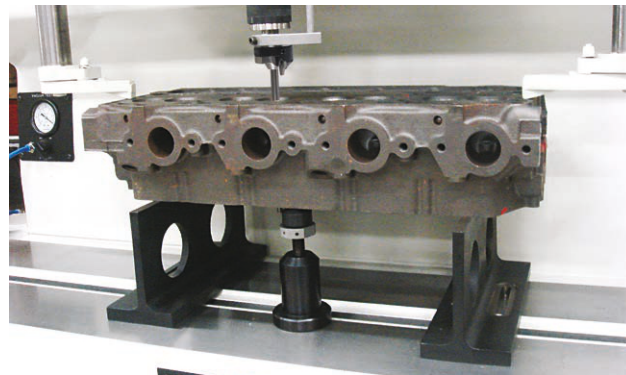
Workhead lights illuminate heads and flash intuitively when the Digital Depth Gauge senses the entered spindle height. Buzzers are replaced by bright LED lights improving operator efficiency. **MANUALMATIC** eliminates foot pedals and combines final lowering, roughing, finishing, raising and Workhead Float into one automated **MANUALMATIC** process! Operator hands stay on the Wheel driving maximum performance.





## Aircraft Cylinders

Rottler offers special optional fixturing for cutting seats in one piece aircraft cylinders.



## Optional 360° Roll Over Fixture

The optional 360° rollover fixture allows large and long heads, such as this Jaguar XJ6, to be rolled 360° for multiple operations. Boring cam follow bores and repairing broken exhaust studs by drilling and tapping benefit from the 360 action.

Difficult Angle and Canted heads, such as the GM 2.0L, are easily clamped and rolled 360°.

Included is a two piece frame kit that allows mounting of overhead camshaft and difficult to mount cylinder heads.

## GUIDE HONING TOOLS



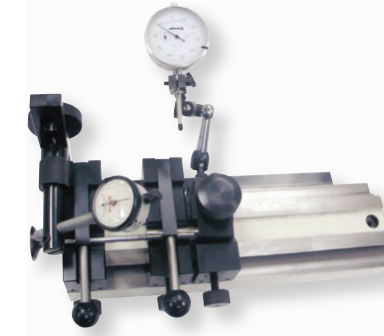
1. Guide length measuring gage
2. Guide leveling pilot
3. Precision diamond honing tool (USA patent pending)
4. Precision master bore gage
5. Sample honed guide

So Advanced, It's Simple



## Valve CONCENTRICITY Measuring Gauge

Spring loaded V supports allow the valve stem to be rotated around its own center line allowing valve seat run out to be measured with a precision gauge. Resolution is .0001" (.002mm) per division. A second dial gauge can be used to check that the valve stem has no run out or bend.



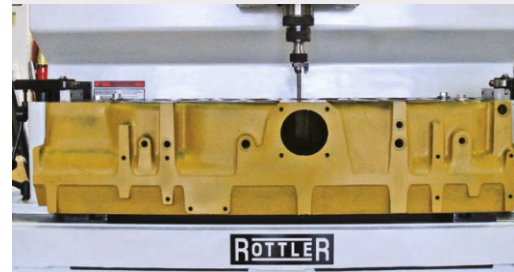
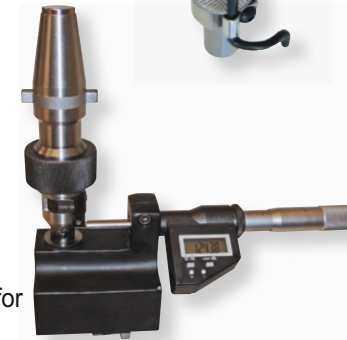
## Valve Seat CONCENTRICITY Measuring Gauge

Rottler's CONCENTRICITY gauge allows concentricity to be easily and quickly checked to ensure accuracy.



## Digital Boring Micrometer

Accurately set the boring diameter to any size with single blade adjustable cutting inserts. Measuring tooling for boring valve seat housings for new seat rings is also accomplished.

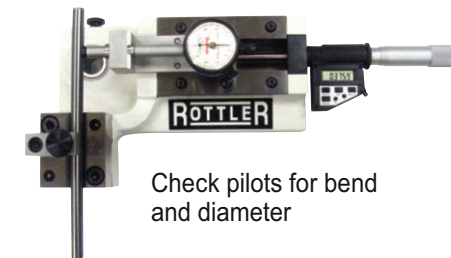


## Diesel Head Fixture

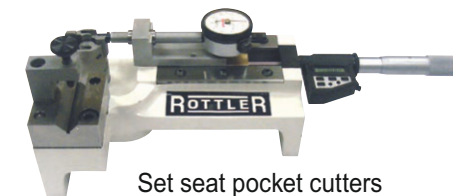
Optional small to medium diesel head fixture allows for fast setup and clamping of in-line cylinder heads.

Cat 3406E cylinder head in large diesel head fixture.

## 6 IN 1 SETTING FIXTURE



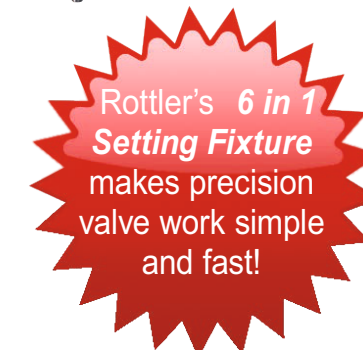
Check pilots for bend and diameter



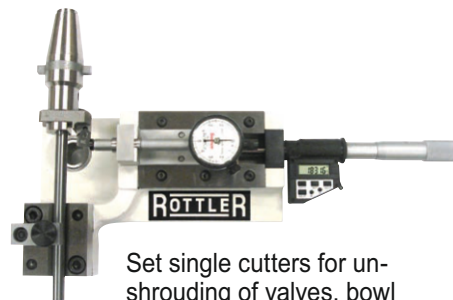
Set seat pocket cutters to proper diameter



Set multi-angle seat cutters to exact diameter



Rottler's 6 in 1 Setting Fixture makes precision valve work simple and fast!



Set single cutters for un-shrouding of valves, bowl work or seat ring removal



Check valves for run out and diameter. Precision setting of valve margin is simplified when setting up multi-angle cutters



# STANDARD EQUIPMENT

- **ACTIVE SPINDLE** - Spherical Pneumatic Automatic Alignment System is built into the Spindle for fast locating of the pilot into the Valve Guide resulting in Accurate Centering (Patent Pending)
- Air Float Work Head with simple Touch Screen Control
- Heavy Duty Spindle - Diameter 3.150" (80mm) Hardened and Ground with 8" (200mm) of hand wheel vertical travel
- Rottler Automatic Tightening and Quick Release Spindle Lock Nut System automatically and securely clamps tooling in place nearly instantly
- Steering Wheel for Rapid Vertical Travel of Spindle
- Fine Feed Mechanism precisely controls Spindle Down Feed to create equal depth cutting of valve seats
- Work head tilts up to 15° in both directions for canted angle valve guides
- Infinitely Variable Spindle Rotation Speed from 25 to 1000 RPM. RPM is constantly monitored in clear view on the color Digital Display
- Quick Change RPM from Low to High with a single button push conveniently located on the bottom of the control panel
- Digital Electronic Level is engineered for quick and accurate Valve Guide alignment
- Digital Gauge for Depth Control of Spindle Travel
- A Flexible Compact Halogen work light is strategically placed on the Work Head supplying light where it matters most
- Tool Storage Cabinet with four Drawers mounts on the machine and swivels for ease of use
- Built in Vacuum Tester Kit is supplied with seven pads and flexible hose. Heads can be quality checked while still fixtured in the machine!

## SPECIFICATIONS *MANUAL MATIC*

|   | AMERICAN                                 | METRIC                |
|---|--|-----------------------|
| Valve Seat Diameter Range                             | 0.550" - 3.150"                          | 14 - 80mm             |
| Cylinder Head Length with 360° rollover fixture       | 44"                                      | 1120mm                |
| Cylinder Head Width with 360° rollover fixture        | 12"                                      | 300mm                 |
| Cylinder Head Height with 360° rollover fixture       | 6"                                       | 150mm                 |
| Cylinder Head Length with Diesel Fixture              | Unlimited                                |                       |
| Cylinder Head Width with Diesel Fixture               | 16"                                      | 400mm                 |
| Cylinder Head Height with Diesel Fixture              | 10"                                      | 250mm                 |
| Spindle Diameter                                      | 3.150"                                   | 80mm                  |
| Spindle Taper   | R30 Quick Change with Automatic Lock Nut |                       |
| Spindle Speed   | 25 to 1000 RPM                           |                       |
| Spindle Motor   | AC Vector Drive                          |                       |
| Spindle Motor Power Maximum                           | 2 HP                                     | 1.5 kW                |
| Spindle Motor Torque Peak                             | 27.3 lb/ft                               | 37 Nm                 |
| Spindle Travel/Stroke Vertical                        | 7.875"                                   | 200mm                 |
| WorkHead Travel Horizontal - Airfloat/Airclamp        | 43.5"                                    | 1100mm                |
| Work Head Travel In/Out - Airfloat/Airclamp           | 3.065"                                   | 78mm                  |
| Roll Fixture Movement In/Out - Airfloat/Clamp         | 4.5"                                     | 115mm                 |
| Max. Work Head Tilt (either side of zero)             | 15° both sides of Vertical               |                       |
| Maximum Distance from Table Surface to Spindle Taper  | 19.5"                                    | 495mm                 |
| Electrical Requirements                               | 208/240 V, 15 A, 50/60 Hz, 1PH           |                       |
| Air Requirements (Pressure and usage)                 | 90 PSI - 4CFM                            | 6 BAR - 2L/Sec        |
| Working Dimensions with Sharpener and Tooling Cabinet | 88" wide x 42" deep x 86" high           | 2235 x 1070 x 2185 mm |
| Shipping Dimensions                                   | 59" wide x 38" deep x 85" high           | 1499 x 965 x 2159mm   |
| Shipping Weight                                       | 2850 lbs                                 | 1293 kg               |
| Paint Color Code                                      | RAL9002 (Grey White)                     |                       |

Specifications and design subject to change without notice.

October 2017

[www.rottlermfg.com](http://www.rottlermfg.com)

[www.youtube.com/rottlermfg](http://www.youtube.com/rottlermfg)  
[www.facebook.com/rottlermfg](http://www.facebook.com/rottlermfg)  
[contact@rottlermfg.com](mailto:contact@rottlermfg.com)

8029 South 200th Street  
 Kent, Washington 98032 USA  
 +1 253 872 7050

1-800-452-0534

Represented by: