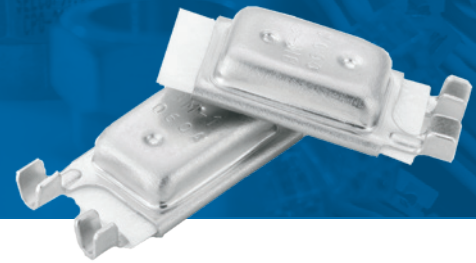


Thermal Protectors

BM1 Series (Open On-Rise)



Thermal Protectors - BM1

The BM1 Series thermal protector is an electromechanical safety device. Simple and effective, it provides complete protection against over-heating, over-loading and mechanical malfunction. The response of the BM-1 thermal protector is determined by current. It has a high contact rating and high temperature ratings which makes it a perfect solution for many different applications.

Selco switches are produced in an ISO 9001 certified factory to insure safe and reliable operation. All models are 100% factory inspected to ensure proper temperature, continuity and function.

The BM1 comes standard without leads and can be customized with leads, connectors and sleeves per your request. For details regarding custom thermal protector assemblies, please contact Selco directly.

Everyday Applications

Lighting Ballasts, Transformers, Battery Packs, Motors, Solenoids, And More...

APPROVALS	
UL / cUL (UL873)	File No. E238541 Temperature Indicating and Regulating XAPX2.E238541 (XAPX8.E238541 cUL investigated to CSA-C22.2 No. 24-93)
UL / cUL (UL2111)	File No. E225267 Thermal Motor Protectors YFZW2.E225267 (YFZW8.E225267 cUL)

Technical Specifications



BM1 Series

Temperature Range

30°-180°C (86°-356°F)

Temperature Tolerance

±5°C (±9°F)

Electrical Ratings

16VDC, 20 Amps, 10,000 Cycles
125VAC, 20 Amps, 10,000 Cycles
250VAC, 8 Amps, 10,000 Cycles

Dielectric Strength

1800 VAC / 1 second

Terminal Configuration

Standard: Radial (same side), Bare

Contact Resistance

50mΩ or less (initial value)

EXAMPLE PART NUMBER

BM1-050A-000N

Open on-rise 50°C±5°C (122°F±9°F), Reset 38°C±12°C (100.4°F±21.6°F), Radial, Bare



Custom Option Shown Here - Call for Details!

NOTE: It is the customer's sole responsibility to specify and determine the suitability of a particular control or component based on their unique individual applications and requirements, with respect to temperature settings, cycle life, electrical load and environmental conditions.

