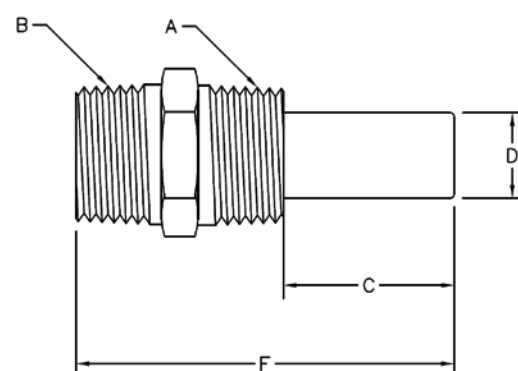
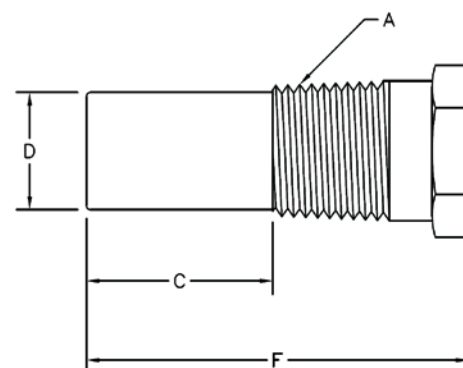


# CP Series Housings

For CPC / CPO Probe Assemblies

STYLE NUMBER	THREADS (A)	THREADS (B)	INSERTION DEPTH (C)	SENSING TUBE DIAMETER (D)	HEX DIMENSION (E)	OVERALL LENGTH (F)	MATERIAL	PRESSURE (psi)
P01	1/4"NPT	--	0.750"	0.385"	0.563"	1.63"	Brass	2000
P02	3/8"NPT	--	1.000"	0.375"	0.688"	1.75"	Brass	4200
P03	--	1/4"NPT	0.625"	0.375"	0.563"	1.38"	304 SS	2000
P04	1/4"NPT	--	2.000"	0.424"	0.563"	2.64"	316 SS	2000
P05	--	--	1.250"	0.375"	--	1.25"	Brass	2000
P06	1/4"NPT	--	0.635"	0.400"	0.563"	1.33"	304 SS	2000
P07	3/8"NPT	--	0.625"	0.400"	0.667"	1.65"	304 SS	2000
P08	10-32 UNC	--	--	--	0.748"	1.25"	304 SS	2000
P09	10-24 UNC	--	--	--	0.748"	1.25"	304 SS	2000
P11	1/2" NPT	--	0.350"	0.687"	0.875"	1.50"	304 SS	2000
P12	1/2"NPT	--	0.625"	0.375"	0.875"	1.60"	304 SS	2000
P13	1/4"NPT	1/2"NPT	0.500"	0.375"	0.875"	1.90"	Brass	2000
P14	1/2"NPT	--	0.625"	0.375"	0.875"	1.60"	Brass	2000
P15	1/4"NPT	--	0.480"	--	0.750"	1.28"	304 SS	2000
P16	1/2"NPT	1/2"NPT	1.000"	0.500"	0.875"	2.22"	304 SS	6300
P17	1/2"NPT	--	--	--	0.875"	1.08"	Brass	2000
P18	1/2"NPT	--	1.500"	0.697"	0.875"	2.62"	304 SS	2000
P20	3/8"NPT	--	1.000"	0.375"	0.688"	1.75"	304 SS	2000
P21	1/4"NPT	--	1.000"	0.424"	0.563"	1.64"	316 SS	2000
P22	1/2"NPT	1/2"NPT	0.350"	0.687"	0.866"	1.72"	Brass	2000
P23	1/2"NPT	1/2"NPT	0.630"	0.540"	0.866"	2.20"	Brass	9000
P24	1/2"NPT	--	0.630"	0.540"	0.866"	1.91"	Brass	9000
P25	1/2"NPT	--	--	--	0.875"	0.74"	304 SS	2000
P26	1/2"NPT	--	2.000"	0.380"	0.875"	3.15"	304 SS	2000
P27	3/8"NPT	1/2"NPT	0.630"	0.540"	0.866"	1.93"	Brass	9000
P30	M20X2.5	--	0.690"	0.550"	0.748"	1.93"	304 SS	2000
P31	3/8"NPT	--	--	--	0.790"	2.00"	304 SS	2000
P32	1/2"NPT	--	0.630"	0.480"	0.875"	1.38"	316 SS	2000
P33	3/8"NPT	--	0.940"	0.540"	0.688"	2.32"	316 SS	2000
P34	1/2"NPT	1/2"NPT	--	--	0.875"	1.68"	Brass	2000
P35	1/2"-14 NPT	--	0.350"	0.690"	0.938"	1.90"	304 SS	2000
P36	1/4"-19 BSP	--	0.250"	0.430"	0.875"	1.35"	304 SS	2000
P37	1/4"NPT	1/2"NPT	0.500"	0.375"	0.875"	1.90"	304 SS	2000
P38	1/4"-18 NPT	--	--	--	0.750"	1.08"	Brass	2000
P39	1/2"-14 NPT	--	0.625"	0.400"	0.875"	1.64"	304 SS	2000
P40	3/8-18 NPTF	--	0.580"	0.530"	0.812"	1.77"	Brass	2000
P41	1/2"NPT	1/2"NPT	0.730"	0.687"	0.866"	2.10"	Brass	2000
P42	1/4"UNC-2A	--	--	--	0.750"	1.34"	Brass	2000
P43	1/2-14 NPT	--	0.350"	0.687"	0.875"	1.53"	316 SS	2000
P44	1/4"NPT	--	0.500"	0.400"	0.563"	1.63"	316L SS	2000
P45	3/8"NPT	--	2.000"	0.500"	0.688"	2.79"	304 SS	2000
P46	1/2"NPT	--	0.370"	0.687"	0.875"	1.53"	304 SS	9000
P47	1/2"NPT	1/2"NPT	0.350"	0.687"	0.866"	1.72"	304 SS	2000
P48	1/2"NPT	--	0.720"	0.700"	0.875"	1.58"	Brass	2000
P49	--	1/4-18 NPT	0.625"	0.375"	0.563"	1.30"	Brass	2000



## NOTE:

1. It is the customer's sole responsibility to specify and determine the suitability of a particular control or component based on their unique individual applications and requirements, with respect to temperature settings, cycle life, electrical load and environmental conditions.
2. The baseline pressure for CP series housing is 2,000 PSI, and the absolute pressure depends on the overall construction of the probe. Please contact us for further information.

For more information on Selco Products please visit us at: [www.selcoproducts.com](http://www.selcoproducts.com)