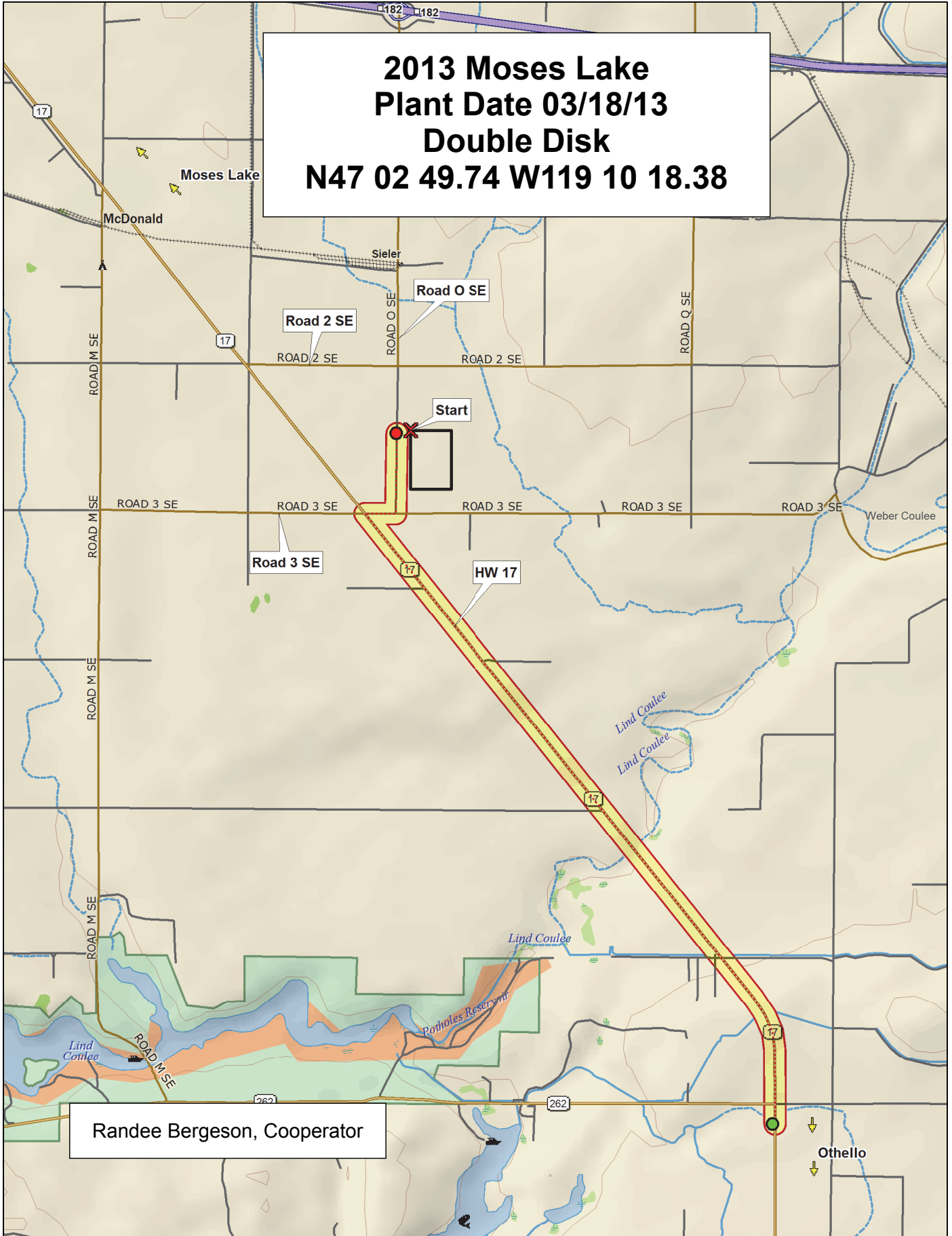
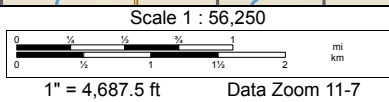
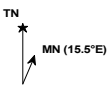


**2013 Moses Lake
 Plant Date 03/18/13
 Double Disk
 N47 02 49.74 W119 10 18.38**



Randee Bergeson, Cooperator



2013 Soft White Spring Trial, Moses Lake

	9	IDO854	Wakanz	Nick	Diva	Louise-0W	WB-1035CL+	WA 8193	WA 8196
	8	Alturas	IDO852	Babe	Louise-G2	Zak	WA 8194	Louise	WA 8195
	7	Whit	UI-Stone (IDO599)	Alpowa	WA 8162	IDO851	ARS03174CS-14	JD	WA 8189
	6	Louise-G2	IDO851	Louise-0W	IDO854	Wakanz	Alpowa	Louise	IDO852
	5	Nick	UI-Stone (IDO599)	Zak	Babe	WA 8196	Alturas	Diva	JD
	4	WA 8194	WA 8162	WA 8189	WA 8193	ARS03174CS-14	WA 8195	Whit	WB-1035CL+
	3	Louise-0W	Zak	Wakanz	WA 8189	Louise-G2	Louise	WA 8196	Whit
	2	Alpowa	WB-1035CL+	Babe	JD	Nick	ARS03174CS-14	WA 8162	Alturas
	1	WA 8194	Diva	IDO851	UI-Stone (IDO599)	WA 8195	IDO852	IDO854	WA 8193
		1	2	3	4	5	6	7	8

Entry	Name
1	Alpowa
2	Babe
3	Diva
4	Nick
5	Wakanz
6	Whit
7	Zak
8	Louise
9	Louise-G2
10	Louise-0W
11	JD
12	Alturas
13	UI-Stone (IDO599)
14	IDO852
15	IDO851
16	IDO854
17	WA 8162
18	WA 8189
19	WA 8193
20	WA 8194
21	WB-1035CL+
22	WA 8195
23	WA 8196
24	ARS03174CS-14

3 Replications, Alpha-Lattice Design

<http://variety.wsu.edu>

Common	Planting Date
Club	18-Mar

9	Breeding Trials	2013 Soft Spring	2013 Hard Spring Irrig.	Breeding Trials
1	1	8 1	14	



2013 Hard Spring Wheat Trial, Moses Lake

9	Glee-0W	Glee (WA 8074)	Bullseye	WA 8191	IDO862E	IDO1202S	AUBR31059W (Roydon)	Glee-G2	IDO862T	WA 8190	LNR10-0551	WB9879CLP	WA 8163	08SB0658-B
8	IDO694C	CHBR1481W (Rexon)	WA 8166	Lassik	Otis	LCS-Buck Pronto	Hollis	WA 8165	WB9229	Kelse	SY605 CL	WA 8164	Solano	WA 8192
7	WB Hartline	COI565W	WB9576	WBEXP-552	Jefferson	Cabernet	Dayn (WA 8123)	Tara 2002	BR7030	Scarlet	Patwin 515	UI-Winchester	Expresso	11SB0096
6	Hollis	Jefferson	Scarlet	Bullseye	11SB0096	IDO694C	LCS-Buck Pronto	WA 8163	Patwin 515	UI-Winchester	IDO862T	WA 8166	WB Hartline	WA 8164
5	Kelse	Glee-0W	IDO1202S	WB9229	CHBR1481W (Rexon)	WA 8190	Otis	Glee (WA 8074)	WA 8165	Solano	COI565W	Tara 2002	Lassik	AUBR31059W (Roydon)
4	Expresso	IDO862E	Cabernet	WB9879CLP	WA 8191	SY605 CL	BR7030	Glee-G2	LNR10-0551	Dayn (WA 8123)	WB9576	08SB0658-B	WA 8192	WBEXP-552
3	Glee-0W	11SB0096	Lassik	IDO862T	Scarlet	UI-Winchester	WBEXP-552	Hollis	Kelse	Glee (WA 8074)	WA 8164	COI565W	BR7030	WA 8166
2	WA 8191	WA 8163	Cabernet	Bullseye	IDO1202S	Tara 2002	SY605 CL	Solano	WB9576	AUBR31059W (Roydon)	Glee-G2	WB9229	IDO694C	WA 8192
1	Patwin 515	WB9879CLP	Otis	CHBR1481W (Rexon)	LCS-Buck Pronto	LNR10-0551	Expresso	Jefferson	08SB0658-B	WB Hartline	Dayn (WA 8123)	WA 8190	IDO862E	WA 8165
	1	2	3	4	5	6	7	8	9	10	11	12	13	14

Entry	Name
1	Dayn (WA 8123)
2	Glee (WA 8074)
3	Hollis
4	Kelse
5	Scarlet
6	Tara 2002
7	Otis
8	Jefferson
9	UI-Winchester
10	Lassik
11	Patwin 515
12	WB9879CLP
13	WB Hartline
14	Bullseye
15	LCS-Buck Pronto
16	BR7030
17	SY605 CL
18	WA 8163
19	WA 8165
20	WA 8166
21	WA 8190
22	WA 8191
23	WA 8192
24	IDO1202S

Entry	Name
25	IDO694C
26	IDO862E
27	IDO862T
28	LNR10-0551
29	08SB0658-B
30	11SB0096
31	CHBR1481W (Rexon)
32	AUBR31059W (Roydon)
33	COI565W
34	Glee-0W
35	Glee-G2
36	WA 8164
37	Cabernet
38	Expresso
39	Solano
40	WB9229
41	WB9576
42	WBEXP-552

3 Replications, Alpha-Lattice Design

<http://variety.wsu.edu>

Red	Planting Date
White	18-Mar

9	Breeding Trials	2013 Soft Spring	2013 Hard Spring Irrig.	Breeding Trials
1	1	8 1	14	

