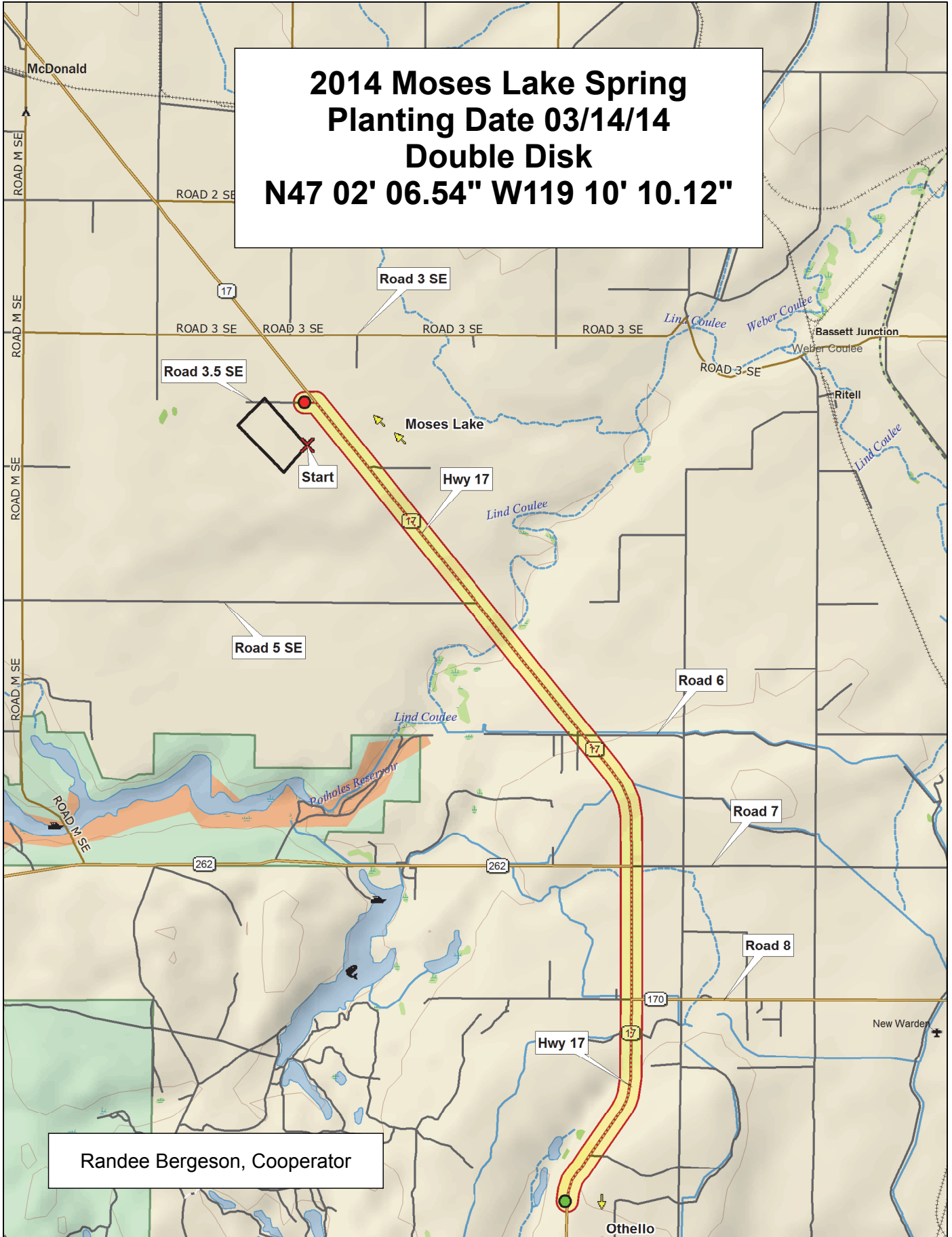
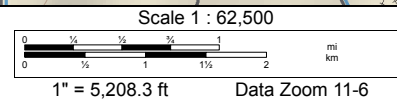
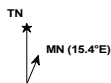


**2014 Moses Lake Spring
Planting Date 03/14/14
Double Disk
N47 02' 06.54" W119 10' 10.12"**



Randee Bergeson, Cooperator



2014 Soft White Spring Trial, Moses Lake

	9	Diva	WA 8193	WA 8189	WA 8214	Louise	WA 8215	Nick	WB6341
	8	JD	Babe	UI-Stone (IDO599)	WA 8224	Alpowa	Alturas	WA 8195	Louise-G2
	7	WA 8213	IDO852	IDO851	Louise-0W	Zak	WB-1035CL+	WA 8162 (Seahawk)	Whit
	6	WB-1035CL+	WA 8195	WA 8214	IDO852	Diva	Zak	JD	WA 8213
	5	Babe	Louise-0W	Alturas	Nick	UI-Stone (IDO599)	WA 8189	WA 8162 (Seahawk)	WB6341
	4	IDO851	WA 8215	WA 8193	Louise-G2	WA 8224	Whit	Louise	Alpowa
	3	WA 8189	Nick	Zak	Alpowa	UI-Stone (IDO599)	Whit	Louise-0W	Louise-G2
	2	WA 8214	WB6341	WA 8224	WA 8213	IDO851	JD	WA 8195	WA 8162 (Seahawk)
	1	Alturas	Diva	WA 8215	WB-1035CL+	WA 8193	IDO852	Louise	Babe
		1	2	3	4	5	6	7	8

Entry	Name
1	Alpowa
2	Alturas
3	Babe
4	Diva
5	IDO851
6	IDO852
7	JD
8	Louise
9	Louise-0W
10	Louise-G2
11	Nick
12	UI-Stone (IDO599)
13	WA 8162 (Seahawk)
14	WA 8189
15	WA 8193
16	WA 8195
17	WA 8213
18	WA 8214
19	WA 8215
20	WA 8224
21	WB6341
22	WB-1035CL+
23	Whit
24	Zak

3 Replications, Alpha-Lattice Design

<http://variety.wsu.edu>

Common	Planting Date
Club	14-Mar

2014 Soft Spring	2014 Hard Spring
9	16
1	1



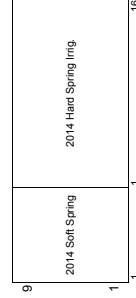
2014 Hard Spring Wheat Trial, Moses Lake

9	Soft Svevo	Expresso	11SB0096	WB-Hartline	UC1743	WA 8223	WA 8222	WA 8221	SAS W4	Solano	WA 8216	Scarlet	HRS 3361	Patwin 515	05SB84	Bullseye
8	HRS 3419	Glee (WA 8074)	SY605 CL	Glee-0W	SY Steelhead	Otis	WA 8165	UC1744	Hollis	Glee-G2	Glee-G2	IDO862E	WB9879CLP	WA 8219	Cabernet	LCS-Buck Pronto
7	BR7030	UC1741	IDO694C	WA 8220	Dayn (WA 8123)	LCS-Star (06SB0656-B)	Svevo	WA 8217	WA 8166 (Alum)	10SB0087-B	Jefferson	IDO862E	WA 8218	LCS-Atomo	WB-Fuzion	Kelse
6	SAS W4	UC1743	Jefferson	Expresso	IDO694C	LCS-Star (06SB0656-B)	HRS 3419	WB9879CLP	WA 8216	SY Steelhead	WA 8222	WA 8218	IDO1202S	Glee-0W	Dayn (WA 8123)	HRS 3361
5	BR7030	WA 8165	WB-Fuzion	Cabernet	WA 8221	Solano	11SB0096	Glee-G2	UC1741	UC1744	Kelse	LCS-Buck Pronto	WA 8217	Bullseye	SAS 4B	Glee (WA 8074)
4	05SB84	IDO862E	10SB0087-B	WB-Hartline	WA 8166 (Alum)	Patwin 515	Soft Svevo	Hollis	WA 8219	WA 8220	SY605 CL	Svevo	Scarlet	WA 8223	Otis	LCS-Atomo
3	IDO1202S	WB9879CLP	SY605 CL	Kelse	Solano	WB-Hartline	WA 8166 (Alum)	Glee (WA 8074)	Otis	11SB0096	10SB0087-B	SAS W4	WA 8219	Soft Svevo	SAS 4B	Glee-0W
2	Patwin 515	WA 8218	Jefferson	WA 8221	Cabernet	Glee-G2	WA 8222	LCS-Atomo	LCS-Star (06SB0656-B)	WA 8220	Bullseye	WA 8165	SY Steelhead	Expresso	UC1741	Scarlet
1	IDO694C	IDO862E	WA 8217	HRS 3361	UC1744	WA 8216	Svevo	BR7030	HRS 3419	WB-Fuzion	LCS-Buck Pronto	WA 8223	UC1743	Hollis	Dayn (WA 8123)	05SB84

3 Replications, Alpha-Lattice Design

<http://variety.wsu.edu>

Red	Planting Date
White	14-Mar
Durum	



Entry	Name
25	SY605 CL
26	UC1741
27	UC1743
28	UC1744
29	WA 8165
30	WA 8166 (Alum)
31	WA 8216
32	WA 8217
33	WA 8218
34	WA 8219
35	WA 8220
36	WB-Fuzion
37	WB-Hartline
38	WB9879CLP
39	SY Steelhead
40	Scarlet
41	SAS 4B
42	SAS W4
43	Expresso
44	Solano
45	Cabernet
46	WA 8221
47	WA 8222
48	WA 8223

Entry	Name
1	Dayn (WA 8123)
2	Glee (WA 8074)
3	Glee-0W
4	Glee-G2
5	BR7030
6	Bullseye
7	Hollis
8	IDO1202S
9	IDO694C
10	IDO862E
11	HRS 3361
12	Jefferson
13	Kelse
14	05SB84
15	10SB0087-B
16	11SB0096
17	HRS 3419
18	LCS-Atomo
19	LCS-Buck Pronto
20	LCS-Star (06SB0656-B)
21	Otis
22	Patwin 515
23	Soft Svevo
24	Svevo