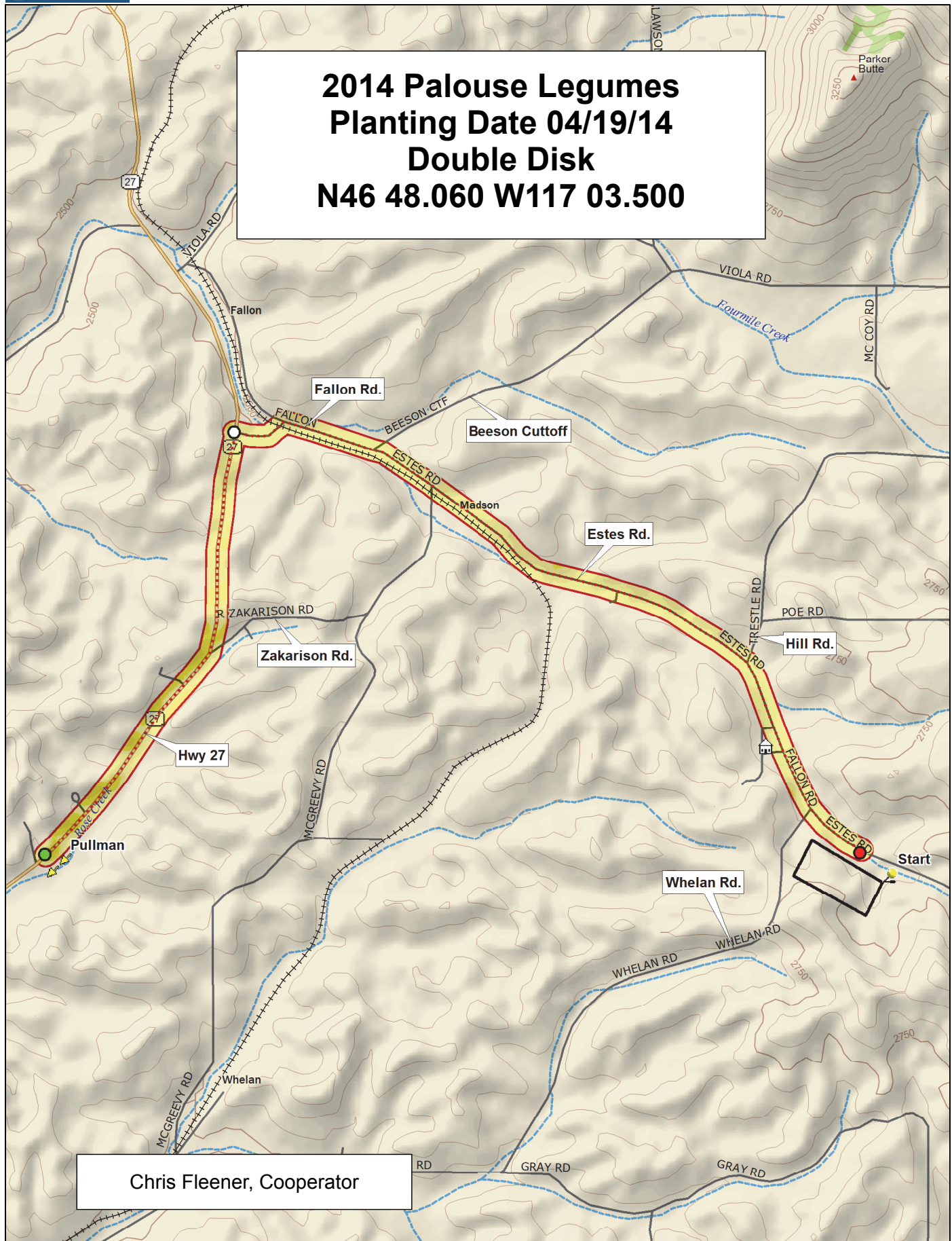
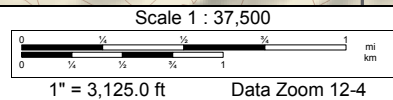


**2014 Palouse Legumes
 Planting Date 04/19/14
 Double Disk
 N46 48.060 W117 03.500**



Chris Fleener, Cooperator



2014 Pea Variety Trial, Palouse

Peas

6	PS05100840	PS05100736	Ginny	PS08100582	Columbian	Carousel	PS03101445	Pro 083-7402	PS07100470	PS07100471	PS07ND0190	Greenwood
5	Banner	Aragorn	Universal	Pro 793	PS08100133	PS08101022	Ariel	NDP080111	PS07100925	PS08101004	Pro 822	PS05100120
4	Columbian	Greenwood	PS08101004	PS08100582	Pro 083-7402	PS05100840	Banner	PS08100133	PS07100470	Universal	PS05100736	PS07100925
3	PS03101445	PS08101022	Pro 793	PS07100471	PS05100120	PS07ND0190	NDP080111	Aragorn	Ginny	Ariel	Carousel	Pro 822
2	Universal	Ariel	Pro 083-7402	PS07ND0190	PS07100925	PS08101022	Banner	Greenwood	PS08101004	PS05100736	PS08100133	PS03101445
1	Pro 822	Aragorn	PS08100582	PS07100471	Ginny	Pro 793	NDP080111	Columbian	PS07100470	PS05100120	Carousel	PS05100840
	1	2	3	4	5	6	7	8	9	10	11	12

Entry	Name
1	Aragorn
2	Ariel
3	Banner
4	Columbian
5	Ginny (Pro 091-7137)
6	Greenwood (Pro 7040)
7	PS07ND0190
8	NDP080111
9	PS03101445
10	PS07100470
11	PS07100471
12	PS05100736 (Hampton)
13	PS05100840
14	PS08100133
15	PS08100582
16	PS05100120
17	Carousel
18	Universal
19	Pro 793
20	Pro 822
21	Pro 083-7402
22	PS07100925
23	PS08101004
24	PS08101022



3 Replications, Alpha-Lattice Design

<http://variety.wsu.edu>

Planting Date: 19-April

1	2014 Peas	2014 Lentils	2014 Chickpeas
	14 1	11 1	12

2014 Lentil Variety Trial, Palouse

Lentils

6	LC07ND055E	Richlea	NDL090413T	LC08600113P	NDL090288E	Crimson	Avondale	Pardina	Eston
5	Merrit	LC0860B130L	LC01602062T	Morena	LC08600116P	LC09600507P	LC01602273E	LC06601734L	LC0860B123L
4	LC01602273E	Eston	Richlea	LC07ND055E	Pardina	Morena	Avondale	Merrit	LC09600507P
3	LC0860B130L	LC08600116P	LC08600113P	NDL090288E	LC0860B123L	LC01602062T	Crimson	LC06601734L	NDL090413T
2	LC0860B130L	LC07ND055E	Eston	LC01602273E	LC09600507P	NDL090413T	LC01602062T	Richlea	LC08600113P
1	LC08600116P	Merrit	LC06601734L	NDL090288E	Avondale	Morena	LC0860B123L	Crimson	Pardina

1 2 3 4 5 6 7 8 9

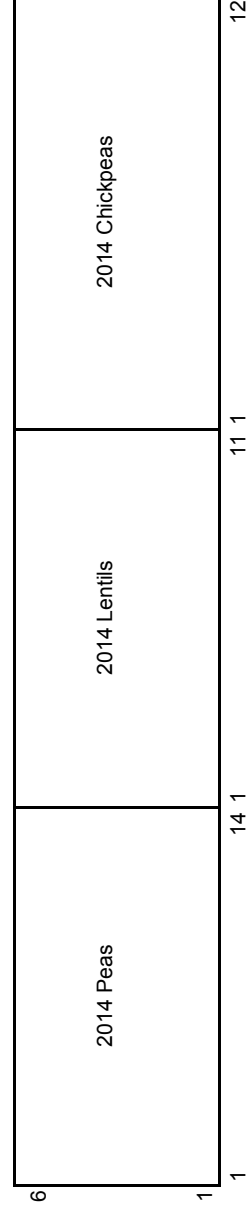
Entry	Name
1	Eston
2	LC01602273E
3	NDL090288E
4	LC07ND055E
5	Pardina
6	Morena
7	LC08600113P
8	LC08600116P
9	LC09600507P
10	Avondale (LC01602300R)
11	Richlea
12	Merrit
13	LC0860B123L
14	LC0860B130L
15	LC06601734L
16	Crimson
17	LC01602062T
18	NDL090413T



3 Replications, Alpha-Lattice Design

<http://variety.wsu.edu>

Planting Date: 19-April



2014 Chickpea Variety Trial, Palouse

Chickpeas

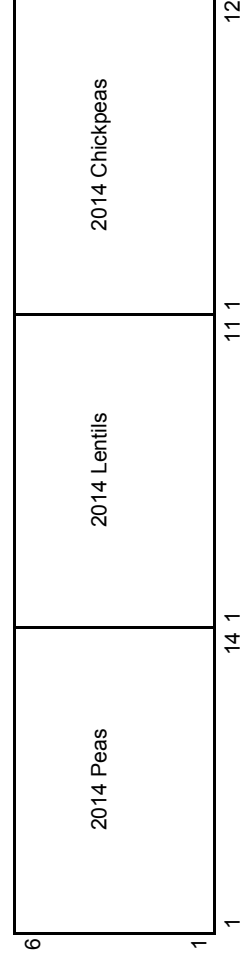
6	Dwelley	Sawyer	BGC090023	Sierra	Evans	CDC Alma	CDC Frontier	CA0790B0054C	Billy beans	CDC Orion
5	BGC08009M	CA0890B0526D	CA0790B0043C	Myles	CA0890B0733C	Royal	CA0790B0042C	CA0790B0034C	CA0490B0223D	Nash
4	CDC Frontier	Sierra	CA0790B0042C	Royal	CA0790B0054C	Evans	CA0490B0223D	CDC Alma	Myles	Billy beans
3	CA0890B0526D	CA0890B0733C	Dwelley	Nash	CDC Orion	CA0790B0034C	BGC090023	Sawyer	CA0790B0043C	BGC08009M
2	Evans	CDC Orion	CA0890B0733C	Dwelley	Sawyer	CA0790B0043C	Myles	CDC Frontier	Nash	CA0890B0526D
1	BGC090023	BGC08009M	Royal	CDC Alma	CA0790B0054C	CA0790B0034C	CA0490B0223D	CA0790B0042C	Sierra	Billy beans



3 Replications, Alpha-Lattice Design

<http://variety.wsu.edu>

Planting Date: 19-April



Entry	Name
1	Dwelley
2	Evans
3	Sawyer
4	Sierra
5	Billy beans
6	CA0790B0043C
7	Nash (CA04900843C)
8	CA0790B0042C
9	CA0790B0054C
10	CA0790B0034C
11	CA0890B0733C
12	Royal (CA04900851C)
13	CDC Alma
14	CDC Orion
15	CDC Frontier
16	BGC08009M
17	BGC090023
18	CA0490B0223D
19	CA0890B0526D
20	Myles