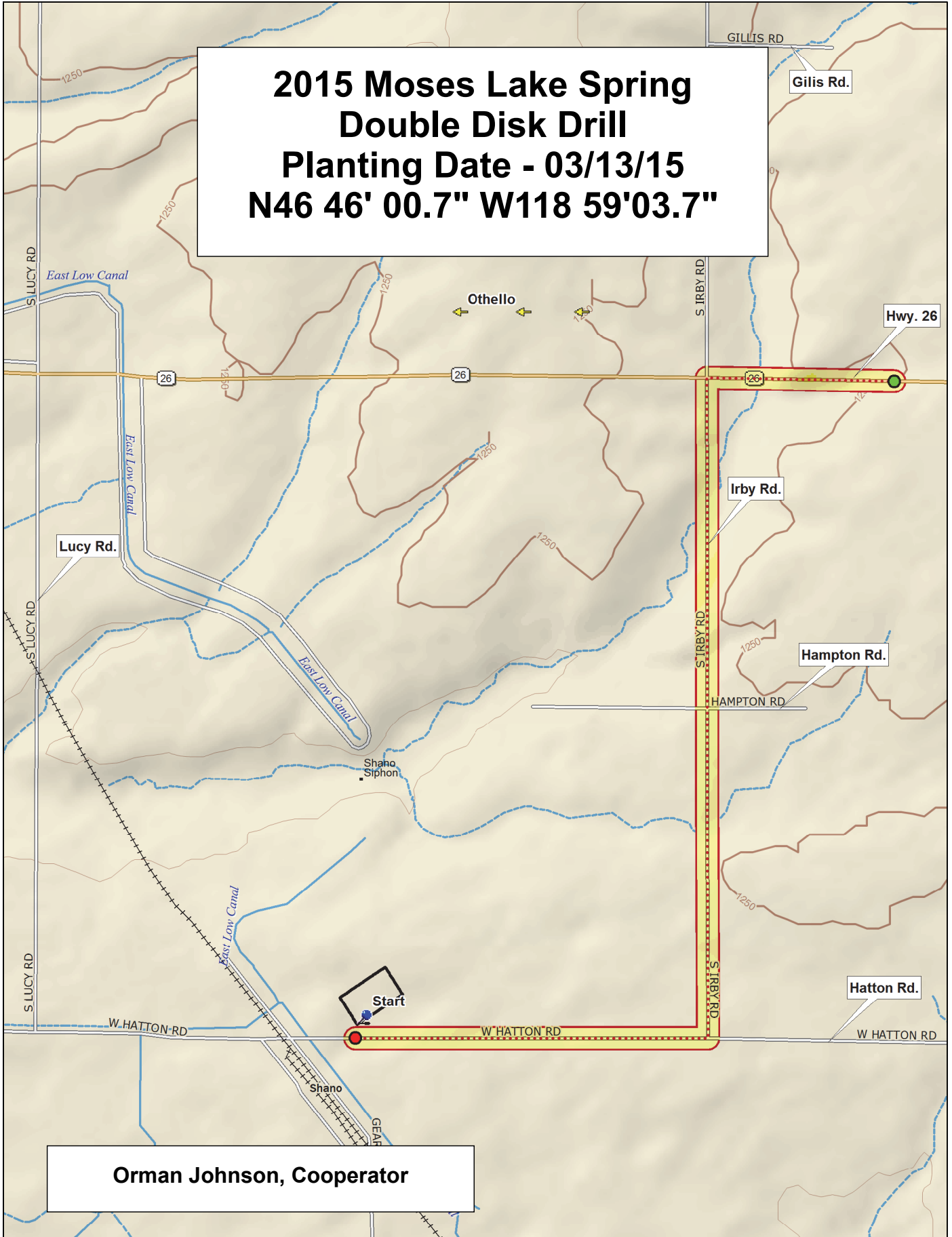
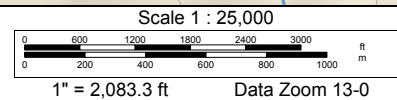
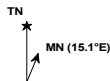


**2015 Moses Lake Spring
 Double Disk Drill
 Planting Date - 03/13/15
 N46 46' 00.7" W118 59'03.7"**



Orman Johnson, Cooperator



2015 Soft White Spring Trial, Moses Lake

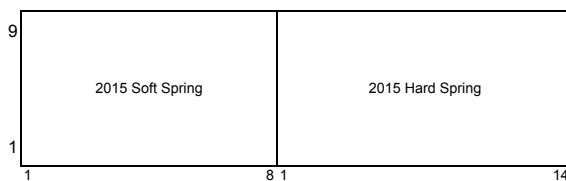
9	WA 8237	Seahawk (WA 8162)	WB6121	Diva	WA 8236	WA 8238	12-SW-052	Louise-0W
8	WA 8193	Louise-G2	JD	WA 8189	WA 8239	12-SW-079	WB-1035CL+	IDO851
7	Babe	WA 8214	Whit	Louise	M12001	UI-Stone	12-SW-068	WB6341
6	Louise-G2	WA 8236	WA 8237	WB6341	12-SW-079	WA 8214	M12001	WB6121
5	WA 8189	WB-1035CL+	Louise	Louise-0W	WA 8193	12-SW-052	UI-Stone	Whit
4	Diva	IDO851	Babe	JD	WA 8238	Seahawk (WA 8162)	WA 8239	12-SW-068
3	WB6121	WA 8189	UI-Stone	WA 8238	12-SW-079	Whit	JD	WA 8236
2	WB6341	Diva	WA 8239	Louise	Babe	Louise-G2	12-SW-068	Louise-0W
1	12-SW-052	IDO851	M12001	WA 8237	Seahawk (WA 8162)	WA 8193	WA 8214	WB-1035CL+
	1	2	3	4	5	6	7	8

Entry	Name
1	12-SW-052
2	12-SW-068
3	12-SW-079
4	Whit
5	IDO851
6	M12001
7	UI-Stone
8	WB-1035CL+
9	WB6121
10	WB6341
11	Babe
12	Diva
13	JD
14	Louise
15	Seahawk (WA 8162)
16	WA 8189
17	WA 8193
18	WA 8214
19	WA 8236
20	WA 8237
21	WA 8238
22	WA 8239
23	Louise-0W
24	Louise-G2

3 Replications, Alpha-Lattice Design

<http://variety.wsu.edu>

Common	Planting Date
Club	13-Mar



2015 Hard Spring Wheat Trial, Moses Lake

9	SY Steelhead	W-341	SAS W4	11SB0096	Hollis	IDO862E	WA 8242	UI-Platinum	Soft Alzada	Chet (WA 8165)	WA 8217	W-217	04W40292R	WB9229
8	WA 8241	WB9518	SY605 CL	SAS 4B	Jefferson	BR7030	10SB0087-B	WA 8240	IDO1202S	LCS-Star	SAS W3	Kelse	LCS-Atomo	Glee-0W
7	Alum (WA 8166)	12SB0131	Scarlet	Glee-G2	Dayn	WA 8220	12SB0146	04PN3001-2	WB9879CLP	Bullseye	WB9668	LCS-Buck Pronto	Glee	SY Basalt
6	UI-Platinum	LCS-Buck Pronto	SAS W4	BR7030	WB9668	IDO862E	Scarlet	Glee-G2	12SB0146	Dayn	04PN3001-2	IDO1202S	W-217	10SB0087-B
5	Jefferson	WA 8241	WA 8240	Alum (WA 8166)	WB9879CLP	04W40292R	WA 8217	Glee-0W	SY Steelhead	WB9518	Chet (WA 8165)	WB9229	WA 8220	Hollis
4	Soft Alzada	11SB0096	LCS-Star	12SB0131	SY605 CL	Kelse	SY Basalt	Bullseye	W-341	LCS-Atomo	SAS 4B	Glee	WA 8242	SAS W3
3	SY Basalt	WB9668	IDO1202S	12SB0146	04W40292R	Bullseye	Glee	SY Steelhead	Hollis	WB9879CLP	WB9229	Glee-G2	WA 8241	12SB0131
2	SAS W4	IDO862E	10SB0087-B	Soft Alzada	Glee-0W	W-341	Alum (WA 8166)	Jefferson	WA 8220	WA 8217	Dayn	Scarlet	Chet (WA 8165)	BR7030
1	WA 8242	Kelse	SAS 4B	W-217	LCS-Buck Pronto	11SB0096	WA 8240	SY605 CL	04PN3001-2	WB9518	LCS-Star	LCS-Atomo	UI-Platinum	SAS W3

Entry	Name
1	BR7030 HWS
2	10SB0087-B HRS
3	11SB0096 HRS
4	12SB0131 HWS
5	12SB0146
6	LCS-Atomo
7	LCS-Buck Pronto
8	LCS-Star
9	04PN3001-2
10	04W40292R
11	Bullseye
12	SY Steelhead
13	SY605 CL
14	IDO1202S
15	IDO862E
16	Jefferson
17	UI-Platinum
18	WB9229
15	WB9518
16	WB9668
17	WB9879CLP

Entry	Name
18	Alum (WA 8166)
19	Chet (WA 8165)
20	Dayn
21	Glee
22	Hollis
23	Kelse
24	Scarlet
25	WA 8217
26	WA 8220
27	WA 8240
28	WA 8241
29	WA 8242
30	Glee-0W
31	Glee-G2
32	Soft Alzada
33	SY Basalt
34	W-217
35	W-341
36	SAS W3
37	SAS W4
38	SAS 4B

3 Replications, Alpha-Lattice Design

<http://variety.wsu.edu>

Red	Planting Date
White	13-Mar
Burum	

