

Moses Lake

Soft White Variety Trial

| | | | | | | | | | | | | | | | | | | | | |
|--------|----|----|----|----|----|----|----|----|----|----|----|----|----|----|----|----|----|----|----|----|
| BORDER | 27 | 11 | 44 | 12 | 24 | 19 | 48 | 1 | 31 | 16 | 32 | 17 | 50 | 53 | 25 | 43 | 3 | 49 | 9 | 40 |
| | 58 | 57 | 38 | 42 | 30 | 59 | 15 | 26 | 56 | 34 | 6 | 14 | 39 | 18 | 7 | 41 | 23 | 54 | 4 | 28 |
| | 37 | 21 | 13 | 55 | 46 | 5 | 47 | 29 | 52 | 51 | 36 | 22 | 8 | 60 | 10 | 33 | 35 | 20 | 45 | 2 |
| | 29 | 17 | 59 | 58 | 10 | 22 | 37 | 7 | 34 | 25 | 21 | 3 | 12 | 56 | 14 | 35 | 9 | 1 | 4 | 51 |
| | 36 | 39 | 52 | 30 | 53 | 6 | 60 | 26 | 11 | 32 | 45 | 23 | 57 | 16 | 43 | 15 | 44 | 13 | 19 | 18 |
| | 49 | 46 | 24 | 48 | 2 | 54 | 8 | 38 | 20 | 47 | 50 | 42 | 5 | 28 | 33 | 40 | 55 | 41 | 27 | 31 |
| | 11 | 31 | 43 | 13 | 54 | 18 | 53 | 51 | 60 | 42 | 33 | 49 | 12 | 37 | 1 | 8 | 17 | 14 | 34 | 46 |
| | 32 | 5 | 30 | 4 | 2 | 36 | 50 | 27 | 15 | 6 | 39 | 16 | 26 | 55 | 44 | 20 | 23 | 19 | 40 | 58 |
| | 38 | 29 | 45 | 41 | 22 | 7 | 59 | 21 | 24 | 9 | 48 | 52 | 3 | 28 | 35 | 57 | 56 | 47 | 10 | 25 |

Irrigated Only Hard Variety Trial

| | | | | | | | | | | |
|--------|----|----|----|----|----|----|----|----|----|----|
| BORDER | 19 | 5 | 29 | 15 | 10 | 16 | 21 | 27 | 20 | 14 |
| | 13 | 3 | 23 | 2 | 17 | 28 | 12 | 18 | 1 | 22 |
| | 8 | 24 | 30 | 6 | 26 | 9 | 11 | 7 | 25 | 4 |
| | 17 | 1 | 4 | 8 | 16 | 21 | 23 | 19 | 9 | 6 |
| | 2 | 7 | 22 | 10 | 26 | 20 | 30 | 12 | 13 | 5 |
| | 28 | 14 | 25 | 3 | 15 | 29 | 24 | 11 | 27 | 18 |
| | 10 | 9 | 30 | 17 | 28 | 14 | 29 | 22 | 4 | 13 |
| | 6 | 20 | 11 | 1 | 15 | 8 | 18 | 25 | 2 | 21 |
| | 5 | 24 | 16 | 7 | 23 | 12 | 27 | 26 | 3 | 19 |



2008-2009 IRRIGATED ONLY HARD TRIAL

| ENTRY | VARIETY | CLASS | ENTRY | VARIETY | CLASS |
|-------|-----------------|-------|-------|--------------|-------|
| 1 | BAUERMEISTER | HRW | 16 | YIELDSTAR 45 | SWH |
| 2 | BOUNDARY | HRW | 17 | UI DARWIN | HDWH |
| 3 | IDO651 | HRW | 18 | PALOMINO | HDWH |
| 4 | IDO653 | HRW | 19 | NUDAKOTA | HDWH |
| 5 | NORWEST 553 | HRW | 20 | MOL | HDWH |
| 6 | EDDY | HRW | 21 | MIETI | HDWH |
| 7 | ACS 52025 | HRW | 22 | DH99-55-2 | SRW |
| 8 | ML9W05-2506 | HRW | 23 | WA008063 | SWH |
| 9 | AGRIPRO PALADIN | HRW | 24 | WA008064 | SWH |
| 10 | W98-344 | HRW | 25 | WA008065 | SWH |
| 11 | BC002-2 | HRW | 26 | VW-29 | SWH |
| 12 | DECLO | HRW | 27 | VW-30 | SWH |
| 13 | PEREGRINE | HRW | 28 | FE-35 | SWH |
| 14 | ACCIPITER | HRW | 29 | MJ-9 | SWH |
| 15 | ESPERIA | HRW | 30 | STEPHENS | SWH |

2008-2009 WSU Winter Wheat Varietal Trial

| Border | | | | | | | | | | |
|--------|----|----|----|----|----|----|----|----|----|----|
| 1 | 38 | 29 | 45 | 41 | 22 | 7 | 59 | 21 | 24 | 9 |
| 2 | 32 | 5 | 30 | 4 | 2 | 36 | 50 | 27 | 15 | 6 |
| 3 | 11 | 31 | 43 | 13 | 54 | 18 | 53 | 51 | 60 | 42 |
| 4 | 49 | 46 | 24 | 48 | 2 | 54 | 8 | 38 | 20 | 47 |
| 5 | 36 | 39 | 52 | 30 | 53 | 6 | 60 | 26 | 11 | 32 |
| 6 | 29 | 17 | 59 | 58 | 10 | 22 | 37 | 7 | 34 | 25 |
| 7 | 37 | 21 | 13 | 55 | 46 | 5 | 47 | 29 | 52 | 51 |
| 8 | 56 | 57 | 38 | 42 | 30 | 59 | 15 | 26 | 56 | 34 |
| 9 | 27 | 11 | 44 | 12 | 24 | 19 | 48 | 1 | 31 | 16 |
| 10 | 1 | 2 | 3 | 4 | 5 | 6 | 7 | 8 | 9 | 10 |
| 11 | 16 | 32 | 17 | 50 | 53 | 25 | 43 | 3 | 49 | 9 |
| 12 | 31 | 49 | 9 | 40 | | | | | | |
| Border | | | | | | | | | | |

| Planting Date | |
|---------------|--------|
| Almira | 8-Sep |
| Anatone | 24-Sep |
| Colton | 1-Oct |
| Connell | 4-Sep |
| Creston | 15-Sep |
| Dayton | 24-Sep |
| Dusty | 16-Sep |
| Fairfield | 29-Sep |
| Farmington | 30-Sep |
| Harrington | 9-Sep |
| Horse Heaven | 8-Oct |
| Lamont | 8-Sep |
| Lind | 4-Sep |
| Mayview | 14-Oct |
| Moses Lake | 22-Oct |
| Pullman | 3-Oct |
| Reardan | 25-Sep |
| Ritzville | 9-Sep |
| St. Andrews | 5-Sep |
| St. John | 16-Sep |
| Walla Walla | 6-Oct |

| | |
|---|--------|
|  | COMMON |
|  | CLUB |

Plots are randomized with 3 replications-There is a border strip on each side of the nursery

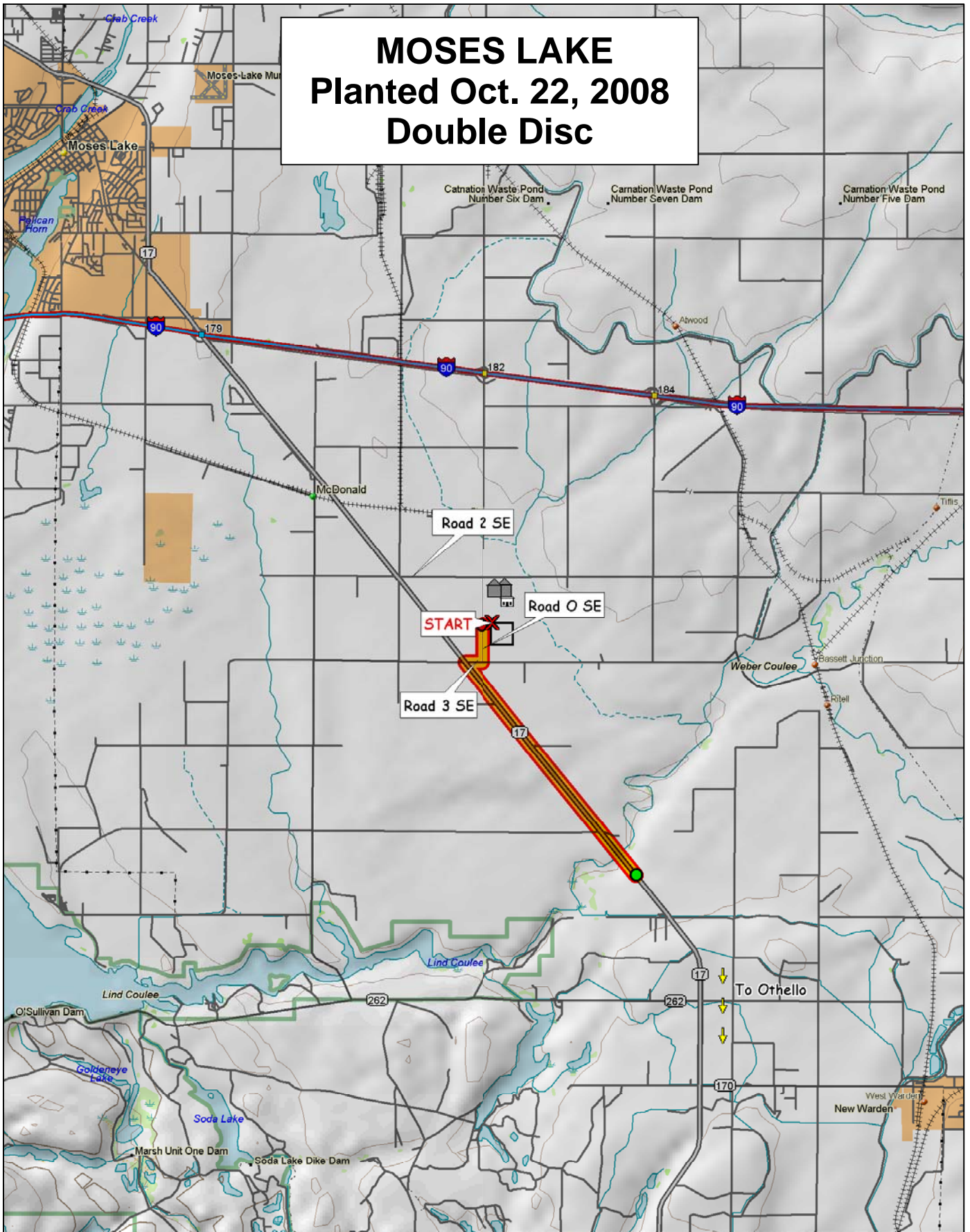
<http://variety.wsu.edu>

WASHINGTON STATE UNIVERSITY
EXTENSION

World Class. Face to Face.

| # | ENTRY | # | ENTRY |
|----|--------------|----|---------------|
| 1 | CODA | 31 | OR2060324 |
| 2 | CHUKAR | 32 | OR2050293 |
| 3 | CARA | 33 | OR2040726 |
| 4 | BRUEHL | 34 | WB 523 |
| 5 | ARS970075-3 | 35 | WB 528 |
| 6 | ARS970168-2C | 36 | WB 456 |
| 7 | ARS970071-3C | 37 | BZ6W02-616 |
| 8 | MADSEN | 38 | GEORGE |
| 9 | ELTAN | 39 | RJAMES |
| 10 | ROD | 40 | CASHUP |
| 11 | FINCH | 41 | SALUTE |
| 12 | MASAMI | 42 | LEGION |
| 13 | XERPHA | 43 | ORF2267-03 |
| 14 | WA008063 | 44 | CDC PTARMIGAN |
| 15 | WA008064 | 45 | KCF08001 |
| 16 | WA008065 | 46 | KCF08002 |
| 17 | WA008066 | 47 | ID990435 |
| 18 | WA008092 | 48 | ID02-859 |
| 19 | WA008093 | 49 | ORI2060306 |
| 20 | WA008094 | 50 | ORCF-101 |
| 21 | ARS960277L | 51 | ORCF-102 |
| 22 | ARS970170-2L | 52 | ORCF-103 |
| 23 | LAMBERT | 53 | AP 700 CL |
| 24 | BRUNDAGE 96 | 54 | WB 1020M |
| 25 | SIMON | 55 | WB 1066M |
| 26 | BITTERROOT | 56 | WB 1070M |
| 27 | 9364901A | 57 | MADSEN/ROD |
| 28 | STEPHENS | 58 | ELTAN/MADSEN |
| 29 | TUBBS 06 | 59 | ELTAN/TUBBS06 |
| 30 | SKILES | 60 | ROD/TUBBS06 |

MOSES LAKE Planted Oct. 22, 2008 Double Disc



© 2001 DeLorme. Topo USA® 3.0

Zoom Level: 11-0 Datum: WGS84

Scale 1 : 100,000

1" = 158 mi

