

Location: Horse Heaven

Soft White Spring Wheat

Hard Spring Wheat

| | | | | | | | | | | | | | | | | | | | |
|--------------------|----|----|----|----|----|----|----|----|--------------------|----|----|----|----|----|----|----|----|----|----|
| YECORA ROJO | 19 | 20 | 6 | 18 | 22 | 13 | 2 | 7 | YECORA ROJO | 14 | 22 | 2 | 1 | 16 | 7 | 15 | 19 | 18 | 13 |
| | 11 | 10 | 12 | 21 | 14 | 8 | 15 | 24 | | 27 | 26 | 28 | 20 | 3 | 9 | 5 | 21 | 12 | 29 |
| | 5 | 17 | 16 | 4 | 23 | 1 | 3 | 9 | | 10 | 25 | 23 | 24 | 17 | 11 | 8 | 30 | 6 | 4 |
| | 11 | 4 | 18 | 13 | 15 | 6 | 3 | 10 | | 3 | 14 | 12 | 23 | 13 | 22 | 28 | 9 | 8 | 24 |
| | 12 | 7 | 19 | 16 | 2 | 8 | 9 | 17 | | 17 | 26 | 18 | 5 | 30 | 20 | 15 | 16 | 29 | 4 |
| | 21 | 23 | 20 | 24 | 1 | 22 | 14 | 5 | | 21 | 19 | 2 | 25 | 6 | 10 | 11 | 27 | 1 | 7 |
| | 1 | 21 | 17 | 18 | 19 | 24 | 9 | 4 | | 25 | 16 | 7 | 12 | 8 | 11 | 2 | 18 | 28 | 23 |
| | 14 | 3 | 11 | 7 | 23 | 13 | 5 | 10 | | 5 | 4 | 13 | 24 | 27 | 17 | 19 | 1 | 29 | 3 |
| | 12 | 8 | 6 | 22 | 2 | 20 | 16 | 15 | | 9 | 26 | 14 | 6 | 15 | 10 | 21 | 22 | 20 | 30 |

2009 WSU Spring WHEAT Varietal Trial

| BARLEY or YECORA ROJO | | | | | | | | | |
|-----------------------|----|----|----|----|----|----|----|----|----|
| 1 | 12 | 1 | 21 | 5 | 11 | 7 | 11 | 19 | 13 |
| 2 | 14 | 1 | 21 | 7 | 11 | 5 | 11 | 20 | 13 |
| 3 | 3 | 11 | 17 | 19 | 18 | 16 | 12 | 6 | 18 |
| 4 | 22 | 7 | 18 | 16 | 13 | 4 | 21 | 18 | 22 |
| 5 | 2 | 23 | 19 | 2 | 15 | 23 | 14 | 8 | 22 |
| 6 | 20 | 13 | 24 | 8 | 6 | 1 | 8 | 15 | 13 |
| 7 | 16 | 5 | 9 | 9 | 3 | 3 | 15 | 2 | 7 |
| 8 | 15 | 10 | 4 | 17 | 10 | 9 | 24 | 7 | 24 |
| YECORA ROJO | | | | | | | | | |
| 1 | 9 | 5 | 25 | 17 | 3 | 10 | 27 | 14 | 14 |
| 2 | 26 | 4 | 16 | 26 | 14 | 25 | 26 | 22 | 22 |
| 3 | 14 | 13 | 7 | 18 | 12 | 23 | 28 | 2 | 2 |
| 4 | 6 | 24 | 12 | 5 | 23 | 24 | 20 | 1 | 1 |
| 5 | 15 | 27 | 8 | 30 | 13 | 17 | 3 | 16 | 7 |
| 6 | 10 | 17 | 11 | 10 | 22 | 11 | 9 | 7 | 9 |
| 7 | 21 | 19 | 2 | 11 | 28 | 8 | 5 | 15 | 19 |
| 8 | 22 | 1 | 18 | 16 | 9 | 30 | 21 | 19 | 18 |
| 9 | 20 | 30 | 29 | 4 | 24 | 4 | 12 | 13 | 13 |
| 10 | 30 | 3 | 23 | 4 | 24 | 4 | 29 | 13 | 13 |
| YECORA ROJO | | | | | | | | | |

| Planting Dates | |
|----------------|--------|
| Almira | 20-Apr |
| Bickleton | 21-Apr |
| Connell | 18-Mar |
| Dayton | 16-Apr |
| Endicott | 7-Apr |
| Farmington | 4-May |
| H. Heaven | 20-Mar |
| Lamont | 15-Apr |
| Lind | 19-Mar |
| Mayview | 24-Apr |
| Moses Lake | 27-Mar |
| Pullman | 21-Apr |
| Reardan | 17-Apr |
| St. John | 20-Apr |
| Walla Walla | 16-Apr |

| |
|------------|
| SOFT WHITE |
| CLUB |
| HARD WHITE |
| HARD RED |

RANDOMIZED PLOTS:
3 REPLICATIONS

FOR MORE INFORMATION.....

STEPHEN GUY (509)335-5831
 JOHN KUEHNER (509)335-4470
 MARY LAUVER (509)335-4470
 Department of Crop and Soil Sciences
 PO Box 646420
 Pullman, WA 99164-6420

SOFT WHITE

| | |
|----|------------|
| 1 | ALPOWA |
| 2 | ZAK |
| 3 | LOUISE |
| 4 | WAKANZ |
| 5 | NICK |
| 6 | BZ604-002 |
| 7 | WHIT |
| 8 | BABE |
| 9 | WA008039HF |
| 10 | WA008041 |
| 11 | WA008108 |
| 12 | WA008090 |

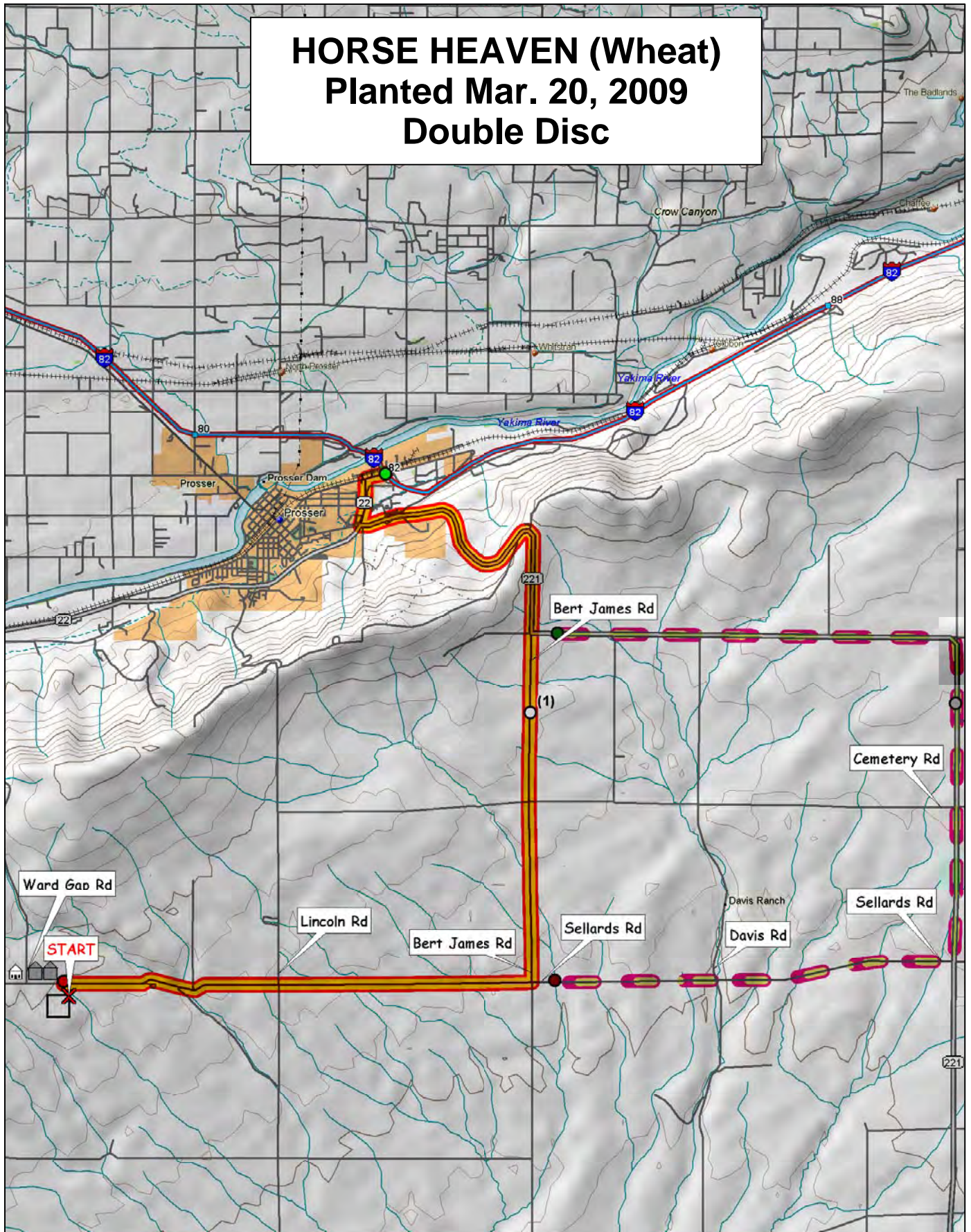
| | |
|----|------------|
| 13 | WA008089 |
| 14 | WA008058 |
| 15 | WA008059 |
| 16 | WA008104 |
| 17 | WA008112 |
| 18 | WA008106 |
| 19 | ALTURAS |
| 20 | CATALDO |
| 21 | EDEN |
| 22 | JD |
| 23 | EDEN (HSR) |
| 24 | JD (HSR) |

HARD RED/HARD WHITE

| | |
|----|---------------|
| 1 | SCARLET |
| 2 | HOLLIS |
| 3 | TARA 2002 |
| 4 | KELSE |
| 5 | WA008027 |
| 6 | WA008072 |
| 7 | WA008074 |
| 8 | WA008075 |
| 9 | WA008076 |
| 10 | JEFFERSON |
| 11 | UI WINCHESTER |
| 12 | WESTBRED 926 |
| 13 | HANK |
| 14 | JEDD |
| 15 | VOLT |

| | |
|----|---------------|
| 16 | NPBHR70 |
| 17 | LASSIK |
| 18 | BUCK PRONTO |
| 19 | BULLSEYE |
| 20 | OR4990114 |
| 21 | MACON |
| 22 | OTIS |
| 23 | WA008078 |
| 24 | WA008079 |
| 25 | WA008100 |
| 26 | WA008101 |
| 27 | BLANCA GRANDE |
| 28 | RSI10348W |
| 29 | CLEAR WHITE |
| 30 | BZ903-445WP |

HORSE HEAVEN (Wheat) Planted Mar. 20, 2009 Double Disc



© 2001 DeLorme. Topo USA® 3.0

Zoom Level: 11-0 Datum: WGS84

Scale: 1" = 100,000'

1" = 1.58 mi

