

## 2007-2008

**Anatone, Bickleton, Creston, Dusty, Fairfield, Mayview, St. John**

### Soft White Variety Trial

<b>MADSEN BORDER</b>	12	23	15	29	48	26	19	39	16	34	36	6	49	9	14	7	38	42	20	46	31	32	24	33	4	<b>MADSEN BORDER</b>
	5	50	25	10	21	41	17	45	8	44	13	37	22	1	3	47	18	2	43	35	11	30	28	27	40	
	24	15	42	3	6	29	22	4	38	35	50	23	13	5	37	47	43	20	49	41	12	48	2	32	40	
	7	9	31	25	18	14	8	39	10	33	21	45	27	26	36	16	30	46	34	1	17	28	11	44	19	
	13	28	5	2	38	22	42	25	14	21	4	17	37	3	46	27	50	26	35	12	10	1	11	23	48	
	40	19	33	43	8	36	24	9	44	49	16	30	45	31	18	15	7	41	20	34	39	29	6	47	32	
	50	49	48	47	46	45	44	43	42	41	40	39	38	37	36	35	34	33	32	31	30	29	28	27	26	
	1	2	3	4	5	6	7	8	9	10	11	12	13	14	15	16	17	18	19	20	21	22	23	24	25	

## 2007-2008 WSU Winter Wheat Varietal Trial

Madsen Border											
1	50	40	13	7	24	5	12	23	15	29	48
2	49	19	28	9	15	50	25	10	21	41	17
3	48	33	5	31	42	25	10	21	41	17	45
4	47	43	2	25	3	25	10	21	41	17	45
5	46	33	38	18	6	29	22	4	38	35	50
6	45	43	22	14	29	22	4	38	35	50	23
7	44	24	42	8	22	4	39	10	33	21	45
8	43	9	25	39	4	39	10	33	21	45	27
9	42	44	14	10	38	35	50	23	13	5	37
10	41	49	21	33	35	50	23	13	5	37	47
11	40	16	4	45	27	26	36	16	30	46	34
12	39	30	17	27	26	36	16	30	46	34	1
13	38	45	3	37	5	37	47	43	20	49	41
14	36	31	46	36	30	46	34	1	17	28	11
15	35	18	27	36	30	46	34	1	17	28	11
16	34	15	7	50	26	35	12	10	1	11	23
17	33	7	41	20	34	39	29	6	47	32	48
18	32	4	20	34	39	29	6	47	32	48	19
19	31	30	32	31	30	29	28	27	26	32	40
20	30	29	32	31	30	29	28	27	26	32	40
21	29	28	32	31	30	29	28	27	26	32	40
22	28	27	32	31	30	29	28	27	26	32	40
23	27	26	32	31	30	29	28	27	26	32	40
24	26	32	40	19	4	38	35	50	23	13	5
25	25	10	21	41	17	45	8	44	13	37	22
26	24	41	17	45	8	44	13	37	22	1	3
27	23	17	48	19	4	38	35	50	23	13	5
28	22	4	38	35	50	23	13	5	37	47	3
29	21	3	37	5	37	47	43	20	49	41	12
30	20	2	43	20	49	41	12	48	2	32	40
31	19	1	43	20	49	41	12	48	2	32	40
32	18	1	43	20	49	41	12	48	2	32	40
33	17	1	43	20	49	41	12	48	2	32	40
34	16	1	43	20	49	41	12	48	2	32	40
35	15	1	43	20	49	41	12	48	2	32	40
36	14	1	43	20	49	41	12	48	2	32	40
37	13	1	43	20	49	41	12	48	2	32	40
38	12	1	43	20	49	41	12	48	2	32	40
39	11	1	43	20	49	41	12	48	2	32	40
40	10	1	43	20	49	41	12	48	2	32	40
41	9	1	43	20	49	41	12	48	2	32	40
42	8	1	43	20	49	41	12	48	2	32	40
43	7	1	43	20	49	41	12	48	2	32	40
44	6	1	43	20	49	41	12	48	2	32	40
45	5	1	43	20	49	41	12	48	2	32	40
46	4	1	43	20	49	41	12	48	2	32	40
47	3	1	43	20	49	41	12	48	2	32	40
48	2	1	43	20	49	41	12	48	2	32	40
49	1	1	43	20	49	41	12	48	2	32	40
50	1	1	43	20	49	41	12	48	2	32	40
Madsen Border											

Planting Date	
Almira	7-Sep
Anatone	25-Sep
Bickleton	8-Oct
Creston	14-Sep
Dayton	26-Sep
Dusty	25-Sep
Fairfield	28-Sep
Farmington	5-Oct
Lamont	12-Sep
Mayview	9-Oct
Moses Lake	10-Oct
Pullman	27-Sep
Reardan	24-Sep
St. John	24-Sep
Walla Walla	2-Oct

	COMMON
	CLUB

Plots are randomized with 4 replications.

There is a Madsen border strip on each side of the nursery.

<http://variety.wsu.edu>

#	ENTRY	#	ENTRY
1	CODA	26	ORH010085
2	CHUKAR	27	OR2050910
3	CARA	28	BU6W00-523
4	BRUEHL	29	WB 528
5	ARS970278-2	30	BU6W99-456
6	ARS970075-3	31	GEORGE
7	ARS970168-2C	32	RJAMES
8	MADSEN	33	CASHUP
9	ELTAN	34	CONCEPT
10	ROD	35	MJ-9
11	FINCH	36	SALUTE
12	MASAMI	37	99X1009-23
13	XERPHA	38	ORF2267-03
14	WA008063	39	ID990435
15	WA008064	40	ID02-859
16	WA008065	41	ORCF-101
17	WA008066	42	ORCF-102
18	ARS960277L	43	ORCF-103
19	LAMBERT	44	AP 700 CL
20	BRUNDAGE 96	45	BZ6WM02-1020
21	SIMON	46	BZ6WM04-1066
22	9222407A	47	MADSEN/ROD
23	9364901A	48	ELTAN/MADSEN
24	STEPHENS	49	ELTAN/TUBBS06
25	TUBBS 06	50	ROD/TUBBS06

FOR MORE INFORMATION.....

JOHN BURNS (509)335-5831/595-5379

JOHN KUEHNER (509)335-4470/595-0013

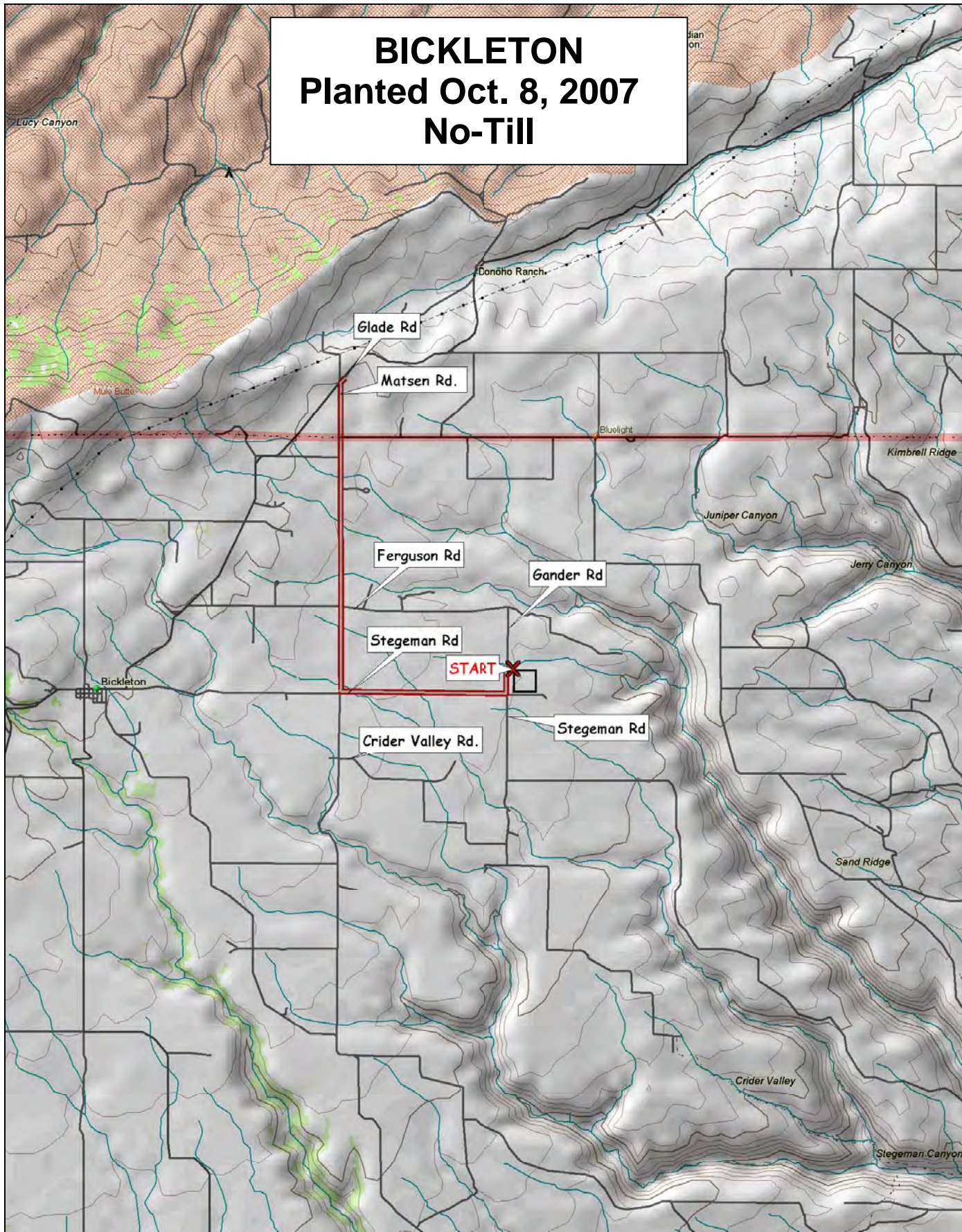
Department of Crop and Soil Sciences

PO Box 646420

Pullman, WA 99164-6420

# BICKLETON

Planted Oct. 8, 2007  
No-Till



© 2001 DeLorme. Topo USA® 3.0

Zoom Level: 11-0 Datum: WGS84

Scale 1 : 100,000

1" = 158 mi

