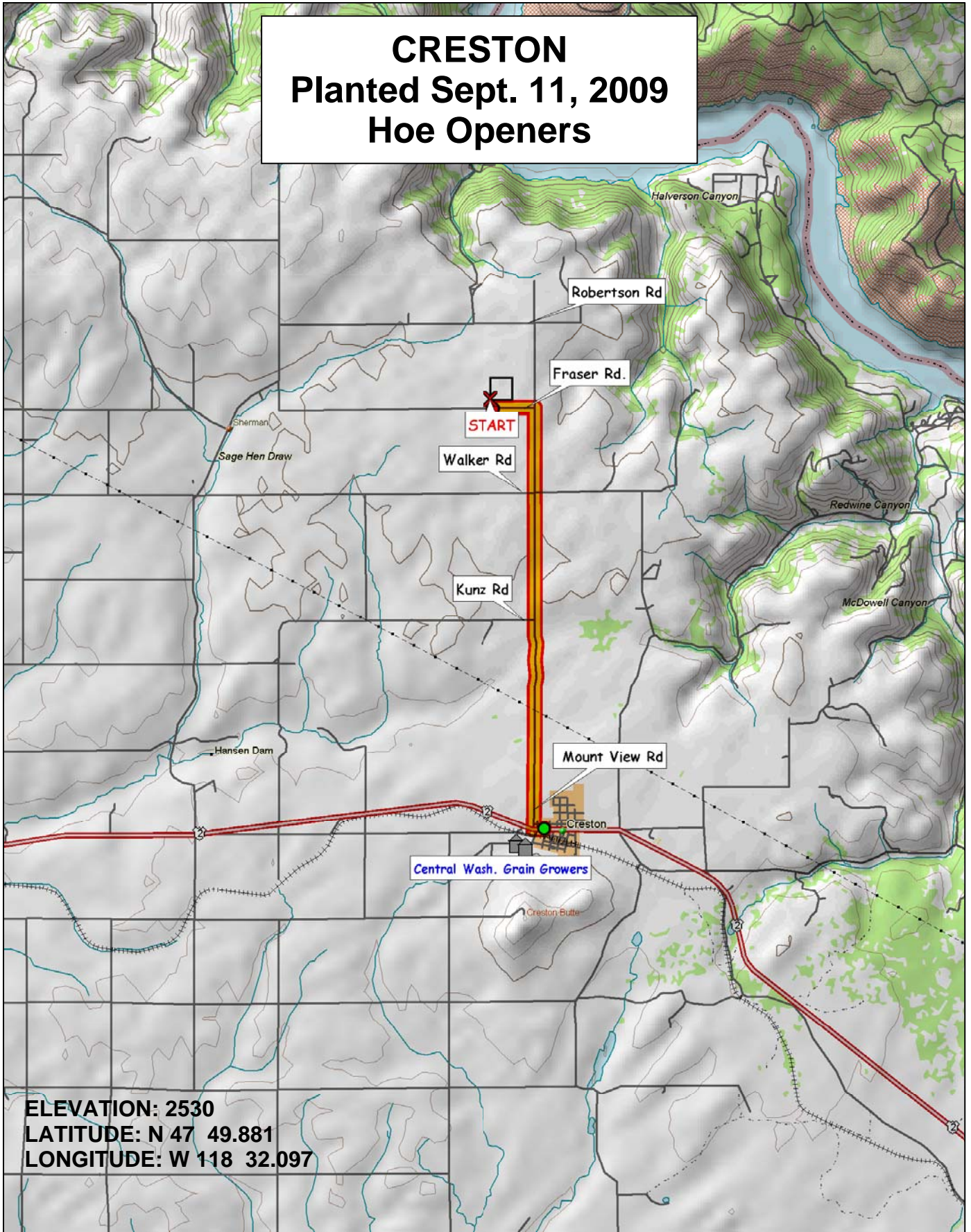


# CRESTON

Planted Sept. 11, 2009  
Hoe Openers



ELEVATION: 2530  
LATITUDE: N 47 49.881  
LONGITUDE: W 118 32.097

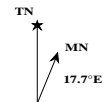


© 2001 DeLorme. Topo USA® 3.0

Zoom Level: 11-0 Datum: WGS84

Scale 1 : 100,000

1" = 1.58 mi



## 2009-2010 WSU Soft White Winter Variety Trial

Range

9	KCF9003	ELTAN	AP LEGACY	REA STEPHENS	GOETZE/ SKILES	RJAMES	KCF9002	WA008116	SKILES	CODA	WA008063	CARA (HSR)	ROD	CHUKAR (HSR)	BRUNDAGE 96	WB-528	OR2060395	ID00-475-2DH	ARS970170-2L	SALUTE
8	FINCH	GEORGE	BITTERROOT	XERPHA	LEGION	ELTAN/ TUBBS06	SIMON	ARS970184-1C	WA008092	LAMBERT	ARS970163-4C	ARS970071-3C	ROD/ TUBBS06	MADSEN	MADSEN/ ROD	ARS970075-3C	ID02-859	MASAMI	DH99-55-2	WA008117
7	WA008094	STEPHENS	ORCF-103	ARS960277L	WA008115	KCF9001	ORCF-102	OR2040726	ELTAN/ MADSEN	CDC PTARMIGAN	WA008114	BRUEHL	AP 700 CL	TUBBS 06	BRUEHL (HSR)	CHUKAR	CARA	WA008093	BZ6W02-616	9364901A
6	CARA (HSR)	KCF9002	REA STEPHENS	WA008117	SALUTE	STEPHENS	AP LEGACY	WB-528	WA008063	SKILES	ID00-475-2DH	ELTAN/ MADSEN	ELTAN	WA008116	WA008114	CDC PTARMIGAN	TUBBS 06	CODA	XERPHA	BZ6W02-616
5	KCF9001	WA008092	BITTERROOT	ARS970163-4C	CARA	OR2040726	ARS970170-2L	RJAMES	BRUEHL (HSR)	BRUNDAGE 96	ROD/ TUBBS06	FINCH	ARS970075-3C	LAMBERT	ARS960277L	CHUKAR (HSR)	GOETZE/ SKILES	DH99-55-2	WA008094	MADSEN/ ROD
4	ARS970184-1C	MASAMI	KCF9003	WA008115	ROD	BRUEHL	OR2060395	WA008093	GEORGE	ORCF-102	9364901A	ID02-859	ORCF-103	ELTAN/ TUBBS06	MADSEN	SIMON	ARS970071-3C	AP 700 CL	LEGION	CHUKAR
3	KCF9001	BRUEHL	CHUKAR (HSR)	KCF9002	ARS970170-2L	OR2060395	RJAMES	ARS970075-3C	GOETZE/ SKILES	CARA (HSR)	WA008116	WB-528	KCF9003	AP 700 CL	CDC PTARMIGAN	OR2040726	CARA	MADSEN	ARS970184-1C	GEORGE
2	WA008093	ELTAN/ TUBBS06	MASAMI	ARS970163-4C	STEPHENS	DH99-55-2	BRUNDAGE 96	ARS960277L	REA STEPHENS	ARS970071-3C	9364901A	ORCF-102	SALUTE	BRUEHL (HSR)	BITTERROOT	WA008114	BZ6W02-616	LEGION	MADSEN/ ROD	LAMBERT
1	TUBBS 06	ELTAN/ MADSEN	CHUKAR	FINCH	SKILES	WA008094	WA008117	SIMON	XERPHA	ROD/ TUBBS06	AP LEGACY	ORCF-103	ROD	CODA	ID00-475-2DH	WA008115	WA008063	WA008092	ELTAN	ID02-859
Row	1	2	3	4	5	6	7	8	9	10	11	12	13	14	15	16	17	18	19	20

\*There is a Xerpha Border strip on each side of the nursery



# 2009-2010 WSU Winter Wheat Varietal Trial

Xerpha Border									
1	35	58	2	15	36	21	25	33	17
2	20	59	16	8	34	56	32	26	28
3	48	4	11	49	27	39	43	5	37
4	7	16	50	23	14	4	39	20	42
5	48	19	30	8	3	38	27	43	9
6	10	49	28	25	44	34	46	40	18
7	21	34	54	26	23	48	53	38	58
8	15	42	30	17	45	59	33	7	19
9	50	13	46	28	37	43	49	24	36
10	1	18	10	14	11	32	40	39	52
11	60	12	57	5	51	16	56	25	2
12	4	3	20	41	29	17	41	2	57
13	54	14	1	52	23	18	19	13	51
14	1	52	23	18	19	13	51	2	57
15	54	14	1	52	23	18	19	13	51
16	54	14	1	52	23	18	19	13	51
17	54	14	1	52	23	18	19	13	51
18	54	14	1	52	23	18	19	13	51
19	54	14	1	52	23	18	19	13	51
20	54	14	1	52	23	18	19	13	51
Xerpha Border									

Planting Date	
Almira	9-Sep
Anatone	17-Sep
Colton	6-Oct
Connell	2-Sep
Creston	11-Sep
Dayton	24-Sep
Dusty	14-Sep
Fairfield	5-Oct
Farmington	5-Oct
Harrington	10-Sep
H. Heaven	22-Oct
Lamont	11-Sep
Lind	1-Sep
Mayview	7-Oct
Moses Lake	16-Oct
Pullman	2-Oct
Rearidan	21-Sep
Ritzville	1-Sep
St. Andrews	31-Aug
St. John	18-Sep
Walla Walla	17-Sep

#	ENTRY
1	CODA
2	CHUKAR
3	CARA
4	BRUEHL
5	ARS970075-3C
6	ARS970071-3C
7	ARS970184-1C
8	ARS970163-4C
9	BRUEHL (HSR)
10	CARA (HSR)
11	CHUKAR (HSR)
12	MADSEN
13	ELTAN
14	ROD
15	FINCH
16	MASAMI
17	XERPHA
18	WA008063
19	WA008092
20	WA008093
21	WA008094
22	WA008114
23	WA008115
24	WA008116
25	WA008117
26	ARS960277L
27	ARS970170-2L
28	REA-STEPHENS
29	9364901A
30	BITTERROOT

#	ENTRY
31	LAMBERT
32	BRUNDAGE 96
33	SIMON
34	STEPHENS
35	TUBBS 06
36	SKILES
37	GOETZE/SKILES
38	OR2040726
39	OR2060395
40	WB-528
41	BZ6W02-616
42	GEORGE
43	RJAMES
44	SALUTE
45	LEGION
46	AP LEGACY
47	CDC PTARMIGAN
48	KCF9001
49	KCF9002
50	KCF9003
51	ID02-859
52	ID00-475-2DH
53	ORCF-102
54	ORCF-103
55	AP 700 CL
56	DH99-55-2
57	MADSEN/ROD
58	ELTAN/MADSEN
59	ELTAN/TUBBS06
60	ROD/TUBBS06

RANDOMIZED PLOTS: 3 REPLICATIONS

	COMMON
	CLUB

<http://variety.wsu.edu>

FOR MORE INFORMATION.....

STEPHEN GUY (509)335-5831  
 JOHN KUEHNER (509)335-4470  
 MARY LAUVER (509)335-4470  
 Department of Crop and Soil Sciences  
 PO Box 646420  
 Pullman, WA 99164-6420