

Model No :: **62573LEDD-BS/ACR**  
 Name :: Citi



Project Name :: \_\_\_\_\_  
 Location :: \_\_\_\_\_  
 Type :: \_\_\_\_\_  
 Quantity :: \_\_\_\_\_  
 Notes :: \_\_\_\_\_

**Product Information**

Product ID :: 62573  
 UPC Code :: 641594234558  
 Mounting Type :: Wall  
 Finish :: Brushed Steel  
 Diffuser :: Acrylic Lens  
 Alt. Finishes :: Antique Brushed Brass (ABB);  
 Brushed Steel (BS); Matte Black (MBL)  
 Alt. Diffusers :: Acrylic Lens (ACR)

**Product Dimensions**

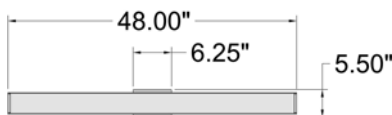
Fixture	Canopy
Length ::	Length ::
Width :: 48	Width ::
Diameter ::	Diameter ::
Extension :: 2.5	Height ::
Height :: 5.5	
Overall Height ::	



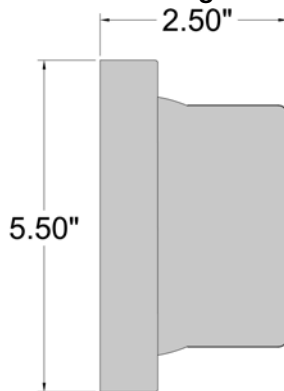
**Technical Specifications**

Qualifications	Specifications	Photometrics	Recommended Dimmers
Location Rating :: Damp	Frame Material :: Metal	CCT :: 3000 K	(ELV) LUTRON Caseta PD - 6WCL; (ELV) LUTRON Maestro CL MACL-153M; (ELV) LUTRON Maestro MRF2-6CL; (TRIAC) LUTRON Diva DVCL-153P
Certification :: ETL Listed (US/Canada)	Diffuser Material:: Acrylic	CRI :: 90	
IES File ::	Voltage :: 120v	Wattage :: 35 W	
JA8 Compliant :: No	Lamping Type :: LED SSL (DLED)	Nominal Lumens :: 2450	
Energy Star :: No	Lamping Base :: SSL	Delivered Lumens :: 2314	
ADA Compliant :: No	Lamp Quantity :: 1	Additional Items ::	
Marine Grade :: No	Lamp Wattage :: 35 W		
Emergency Lighting :: No	Total Wattage :: 35 W		
Warranty :: 1 Year Limited	Lamps Included :: Yes		
	J-Box Type :: Standard		

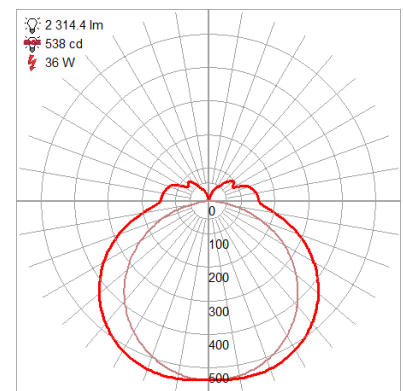
**Line Drawing #1**



**Line Drawing #2**



**IES File**



**Toll Free 800-828-5483 • www.AccessLighting.com**

14410 Myford Road, Irvine, CA 92606

The information provided is subject to change without notice. ©2020 Access Lighting Corporation. All Rights Reserved  
 Rev. 202105 Filename:: 62573LEDD-BS\_ACR.pdf

