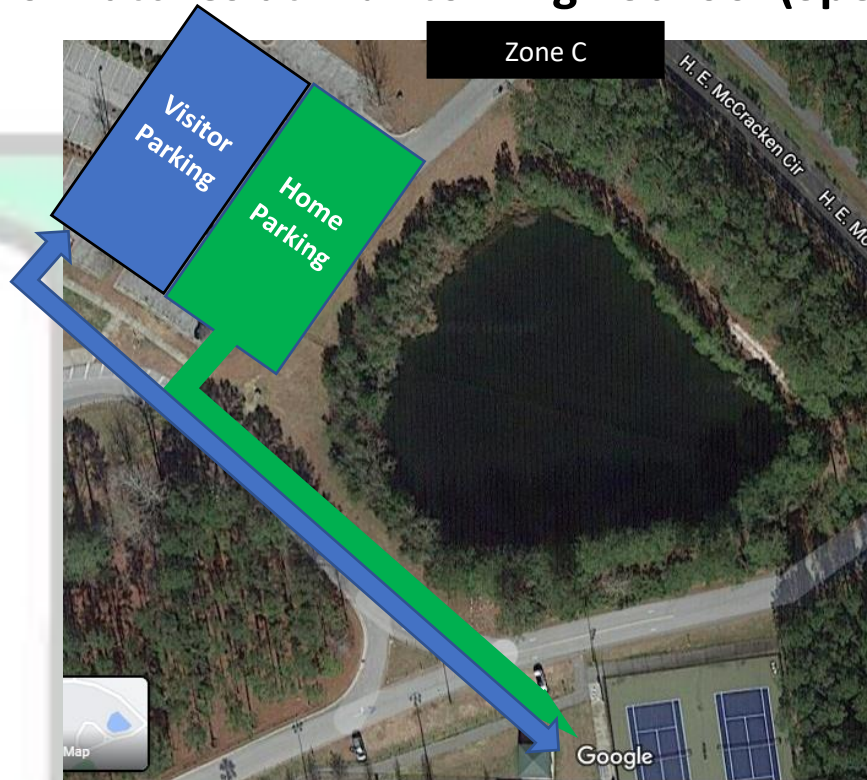


Tennis Matches at Bluffton High School (Spectators)



Home/Visitor Spectators Notes:

- Stay home if sick or have a fever, experiencing signs or symptoms of COVID-19, tested positive for COVID-19 or been in close contact with a person who has symptoms of COVID-19 within the last 14 days

- Anyone that has pre-existing medical conditions that place them at higher risk of infection or those who do not want to risk contracting COVID-19 should consider staying home
- Must remain 6 feet apart if not from the same household
- No more spectators will be allowed once the venue has reached full capacity with spectators spaced at 6 feet apart
- There is no seating available at the tennis venue. Spectators may bring personal chairs.
- Face coverings are required at all times.
- Anyone who becomes ill during the event should report immediately to a Bluffton High School staff member.
- Spectators are not allowed on the courts at any time.
- Spectators are not allowed at team areas.
- Adhere to Beaufort County School District's Clear Bag Policy (see details below)

Parking: Park in Zone C lot off of H.E. McCracken Circle; put on mask upon exiting the vehicle

Restrooms: Located at the baseball/softball concession stands; please adhere to signage and social distancing policies

Concessions: No concessions will be available

When final matches end for spectators: Spectators should immediately exit the tennis facility to their vehicles



Clear Bag/No Bag Policy

Approved bags include — Clear Tote (12" x 6" x 12"),
1 Gallon Clear Plastic storage bag, Small Clutch
with wrist strap (not to exceed 4.5" x 6.5")

