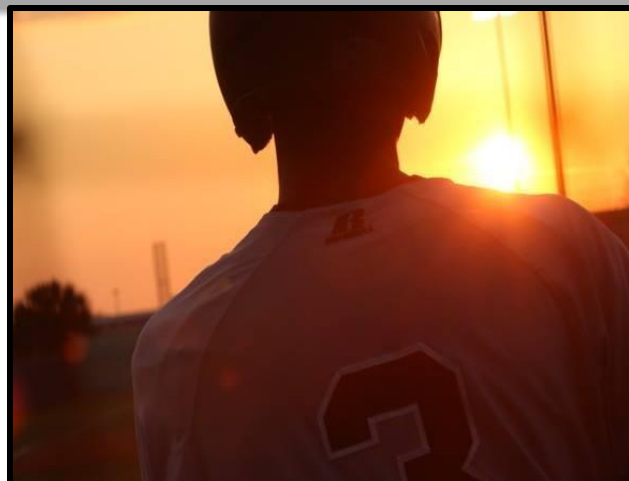




TITANS

Olympia High School Visitor's Guide



**OLYMPIA HIGH SCHOOL
4301 S. APOPKA-VINELAND RD.
ORLANDO, FL 32835
407-905-6400**



Olympia High School

“Building a legacy of learners where success is measured by commitment, results, and leadership”



Team Visitor's Guide

Principal- Guy Swenson

Athletic Director- Kevin McElveen

Athletic Trainer-Barry Walters

Athletic Trainer-CORA Rep.

School Colors- Black, Silver, Teal

School Mascot- Titans

Home Jersey Color- Black

Away Jersey Color- White or Silver

Tickets- Tickets are \$5 for all home sporting events except football which costs \$6. Tickets can be purchased at the ticket gate beginning at 5pm at the visitor entrance the day of the game. All individuals 6 years of age or younger will be admitted free when accompanied by an adult.

District Tournament Admission: \$6

Regional Play-off Admission: \$7

Re-entry- There is no re-entry once you have entered a sporting event.

Passes- The following passes will be accepted for regular season games only.

- Florida Athletic Coaches Association (FACA) **Bearer only (with picture ID)**
- Florida High School Athletic Association (FHSA) **Bearer only (with picture ID)**
- Orange County Public School ID Badge – **Bearer only (with picture ID)**
- Visiting Team's Faculty ID- **Bearer only (with picture ID)**
- Olympia High School Faculty ID- **Bearer plus immediate family (with school ID)**
- Olympia High School Student All Sports Pass- **Bearer only (with picture ID)**
- Olympia High School Adult All Sports Pass- **Bearer only (with picture ID)**
- Olympia High School Family All Sports Pass- **Bearer only (with picture ID)**
- Visiting team bus driver and managers will be admitted when properly identified and accompanied by a visiting coach. Cheerleaders in uniform will be admitted when accompanied by a coach.

Buses- All visiting team buses will enter the school property and drop off students in the parking lot closest to the playing area. The buses will then park in the designated area assigned.

Prohibited Items- Bottles (glass), coolers, drinks without lids, alcoholic beverages, weapons, artificial noise makers, sticks, chains, illegal substances, laser pointers, clothing portraying vulgar language, fireworks, aerosol cans, pets, pepper spray, and any item deemed to be considered contraband material by the administration/ Orange County Sheriff's Office to be dangerous or inappropriate.

Student Supervision- The visiting team students and staff on their side will be monitored by Olympia High School personnel and The Orange County Sheriff's Office who will be on duty. The visiting team student's should refrain from entering the Olympia High School side unless accompanied by a parent, guardian, or administrator and only to use the restroom facilities or the concession stand. Any incidents that occur on the Olympia High School side should be reported to Olympia High School personnel and or the Orange County Sheriff's Deputy's on duty.

Sportsmanship- Sportsmanship is an expectation of all Olympia High School athletic events. Please refrain from any inappropriate behavior or language that could be offensive to guests, officials, staff personnel, or patrons of the game. Anything deemed inappropriate by Olympia High School staff members could result in immediate dismissal from the athletic contest.

Hazardous Weather- Olympia High School utilizes the TELVENT Weather Sentry Sports Edition Monitoring System for hazardous and dangerous weather at all outdoor contests. Our administrators, athletic trainers, and coaches have access to and will receive the 8 mile lightning warning which indicates that it is time to get off of the field immediately. All student-athletes, band members, staff, and spectators must be moved to a safe location. The public address announcer will give instructions to evacuate the playing area and instruct spectators to go to their personal vehicle or to the gymnasium until the warning has been lifted. Student-athletes from both teams will report directly to their designated locker room area for shelter.

- We will utilize the OCPS 30-30 rule to determine when it is safe to resume the outdoor activity.

General Information- If you have any questions please call Athletic Director Kevin McElveen at 407-905-6482 or email at kevin.mcelveen@ocps.net

OLYMPIA HIGH SCHOOL ATHLETICS

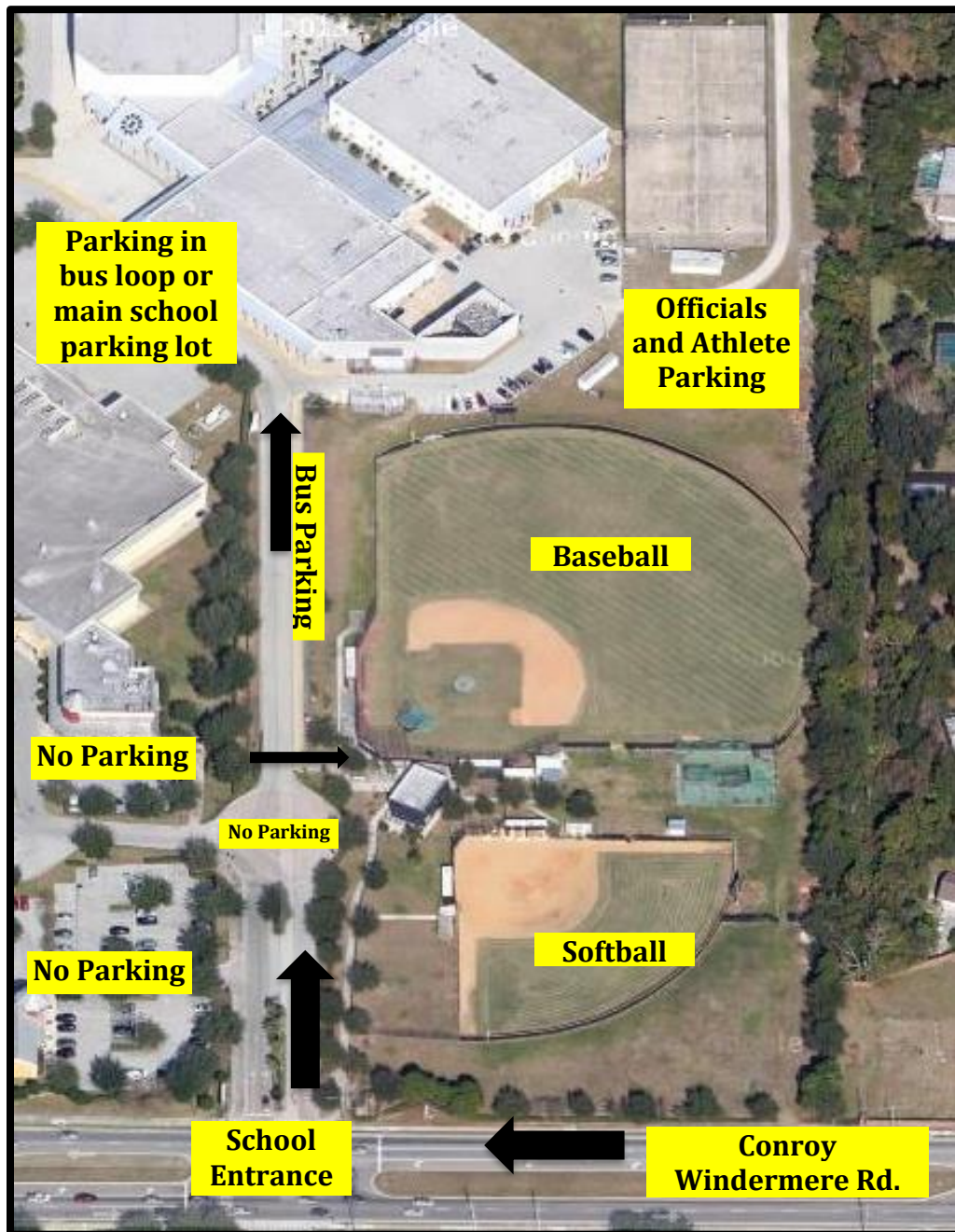


Basketball-Flag Football- Lacrosse- Soccer- Volleyball Entrance:

- Located at main school entrance at Apopka-Vineland Rd.
- Parking in the designated parking areas

Olympia High School
4301 S. Apopka Vineland Rd.
Orlando, FL 32835

OLYMPIA HIGH SCHOOL ATHLETICS



Softball and Baseball Field Entrance:

- Located at entrance at Conroy-Windermere Rd.
- Parking in the bus loop or in designated parking area. Main school parking lot at main entrance off Apopka-Vineland Rd. preferred.

Olympia High School

4301 S. Apopka Vineland Rd.

Orlando, FL 32835