

# COVID-19 Screening for Parents

**Every morning before you send your child to school please check the following:**

- 1** Your student does **NOT** have a fever greater than 100.4 degrees (may be lower based on your school's policy) **OR** lower if your child is not feeling well.

**Other signs of illness such as:**

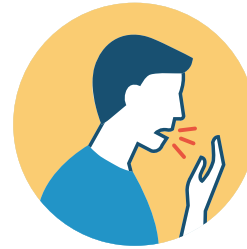


**FEVER 100.4\* OR CHILLS**

*\*or school board policy if threshold is lower*



**SORE THROAT**



**COUGH\***

*\*especially new onset, uncontrolled cough*



**DIARRHEA, VOMITING OR ABDOMINAL PAIN**



**HEADACHE\***

*\*particularly new onset of severe headache, especially with fever*



**NEW LOSS OF TASTE OR SMELL**



**MUSCLE OR BODY ACHES OR FATIGUE**



**CONGESTION OR RUNNY NOSE**



**SHORTNESS OF BREATH OR DIFFICULTY BREATHING**

- 2** Were you in close contact (within 6 feet for more than 15 minutes) with anyone confirmed with COVID-19 within the last two weeks?

- 3** If the answer is **YES** to any of the questions, **DO NOT** send your student to school. Instead, begin isolation of your child and contact your healthcare provider. Strongly consider COVID-19 testing.  
**Please contact your building Principal.**

- ➔** *If you have trouble breathing, chest pain, new confusion, inability to wake or stay awake or bluish lips or face*

**CALL 911!**

# COVID-19: When a student, faculty or staff member can return to school



Individual	Symptomatic	No Symptoms
Not Tested <b>with</b> Alternate Explanation (ear or urinary tract infection, etc. as determined by a provider)	May return to school after 24 hours resolution of fever <b>AND</b> note (including email and fax) from provider stating the individual has an alternate diagnosis and the provider believes it's appropriate for the patient to return to school.	N/A
Not Tested <b>Without</b> Alternate Explanation	Must remain home for at least 10 days from the first day symptoms appeared <b>AND</b> 24 hours fever-free without fever-reducing medicine and with improvement of symptoms.	N/A
Tested and Negative	<p>1) If no alternative explanation, <i>isolate</i> for at least 10 days from the first day symptoms appeared <b>AND</b> 24 hours fever-free without fever-reducing medications and with improvement of symptoms.</p> <p><b>OR</b></p> <p>2) The individual can return to school if tested negative <b>AND</b> with a note from the provider stating they believe the patient to have an alternate diagnosis and it's appropriate for the patient to return to school.</p>	<p>1) May proceed with attending school as long as individual has no exposure to a positive case.</p> <p><b>OR</b></p> <p>2) A known close contact (within 6 feet of a confirmed case for more than 15 minutes) must complete a 14-day <i>quarantine</i>, even if test results are negative for COVID-19.</p>
Tested and Positive	<p>Must remain home in <i>isolation</i> for at least 10 days from the date symptoms began <b>AND</b> individual is 24-hours fever free, symptoms have improved.</p> <p>(CDC does not recommend test-based strategy except in certain circumstances, including provider's advice and test availability.)</p>	<p><i>Isolate</i> at home for 10 days from the day the test was taken.</p> <p>(CDC does not recommend test-based strategy except in certain circumstances, including provider's advice and test availability.)</p> <p><i>*If the individual develops symptoms, then isolation time starts on day 1 of symptoms (see symptomatic tests positive.)</i></p>
Close Contact (within 6 feet for more than 15 minutes of someone with confirmed COVID-19)	<p>N/A</p> <p>If an individual becomes symptomatic, refer to the symptomatic scenarios. The individual must <i>quarantine</i> for 14 days after contact with the COVID-19 Positive person even if the student has an alternate diagnosis for symptoms.</p>	<p><i>Quarantine</i> for 14 days before returning to school. Must remain symptom-free. If individual develops symptoms, then refer to the symptomatic scenarios.</p>

Note: QUARANTINE keeps someone who was in close contact with someone who has COVID-19 away from others.  
ISOLATION keeps someone who is sick or tested positive for COVID-19 without symptoms away from others, even in their own home.

Updated: 8/7/20