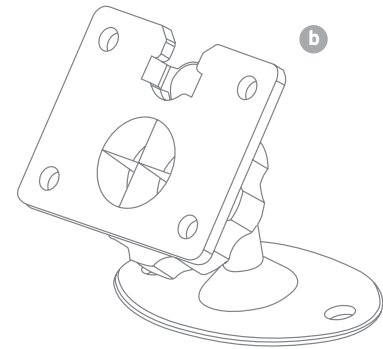
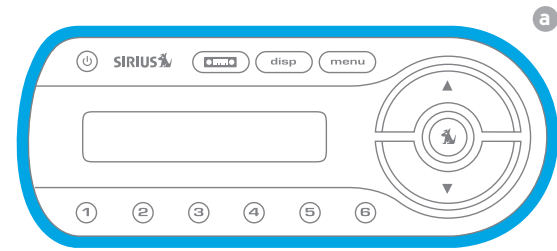
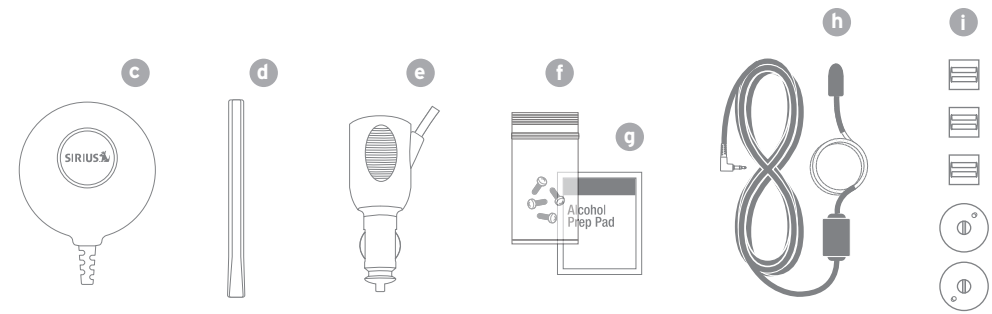




Take your radio out of the box.
You should have these.



- a. radio
- b. dash mount
- c. antenna
- d. antenna cover/tail
- e. power adapter
- f. screws
- g. alcohol pads
- h. FM extender antenna (FEA)
- i. self-adhesive cable guides (3)
& suction cups (2) for FEA



sirius.com

SIRIUS Satellite Radio Inc.
1221 Avenue of the Americas
New York, NY 10020
888.539.SIRIUS(7474)

© 2007 SIRIUS Satellite Radio Inc. "SIRIUS" and the SIRIUS dog logo, channel names and logos and related marks are trademarks of SIRIUS Satellite Radio Inc. Radio and subscription required and sold separately. All rights reserved.

SAFETY PRECAUTIONS

Be sure to observe the following warnings. Failure to follow these safety instructions and warnings may result in a serious accident and/or personal injury.

Installation must be performed according to this installation guide. SIRIUS® is not responsible for issues arising from installations not performed according to the procedures in this guide.

Do not install the FM Extender Antenna or any other component where it will hinder or block your view. In some states it may be illegal to mount it on the windshield of your vehicle. Check applicable law for any restrictions or limitations before installing the extender cable on your windshield.

Do not install the FM Extender Antenna or any other component where it may hinder the function of safety devices such as an airbag. Doing so may prevent the airbag from functioning properly in the event of an accident.

The installation and use suggestions contained in this guide are subject to any restrictions or limitations that may be imposed by applicable law. The purchaser should check applicable law for any restrictions or limitations before installing the extender cable.

Notice to drivers in California and Minnesota: State law prohibits drivers in California and Minnesota from using suction mounts on their windshields while operating motor vehicles. Other dashboard or friction mounting options should be used. SIRIUS does not take any responsibility for any fines, penalties, or damages that may be incurred as a result of disregarding this notice (See California Vehicle Code Section 25708(a); Minnesota Statutes 2005, Section 16971).

Getting Started InV2 (S12GSG080107a)
00.ABCD1.001



Getting Started

Installing the Vehicle Kit for your InV2 Satellite Radio



Sit. Stay. Have fun.

Thanks for giving your InV2 a good home. You're probably anxious to get started.

Before you decide to install this kit yourself, we'd like to suggest getting a pro to help. We want you to be 100% satisfied with your satellite radio experience. Just visit your local retailer for installation, or visit sirius.com to learn more.

Here's a simple guide for those who prefer doing this kind of stuff themselves. For more detailed info, check out your User Guide or click the "INSTALL + ACTIVATE" link on our homepage.

1 The big decision. Pick a spot for your radio.

A. Choose a location.

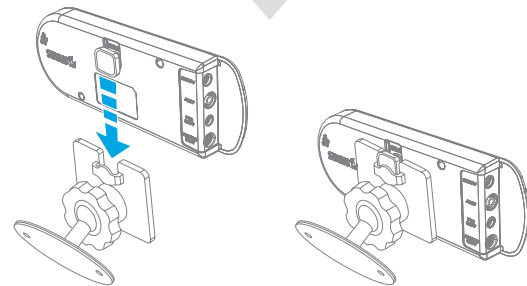
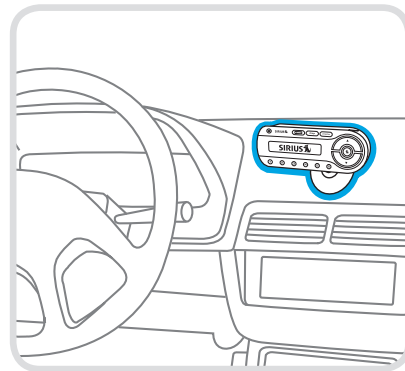
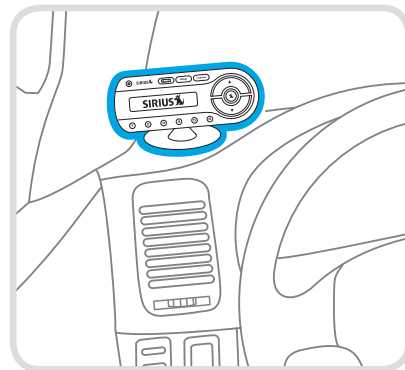
When installing the dash mount in your vehicle select a location that is easily accessible and provides good visibility of the display screen, and should not be located where it will be in direct sunlight which will affect the visibility of the display screen.

B. Attach to dash.

Once you've selected a mounting location, clean the mounting surface area in the vehicle with the provided alcohol swab. Allow the surface to dry for 2-3 minutes and then firmly mount the foot to the dash location. The best adhesion occurs after 24 hours.

Refer to page 14 in the User Guide if you prefer more detailed instructions.

DASH MOUNT



BE SAFE: Make sure your radio isn't in a place where it could interfere with driver visibility or safe deployment of the airbags.



BE SMART: Additional vehicle installation accessories are available at your satellite radio retailer or visit sirius.com/accessories/vehicle-installation for more information.

2 You'll be glad you did this right. Place your magnetic antenna and hide those wires.

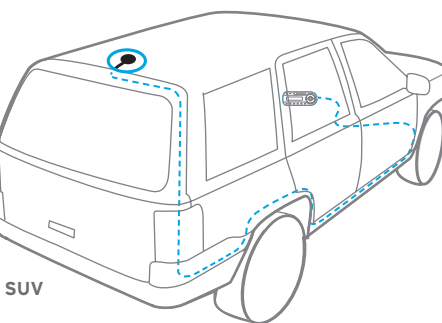
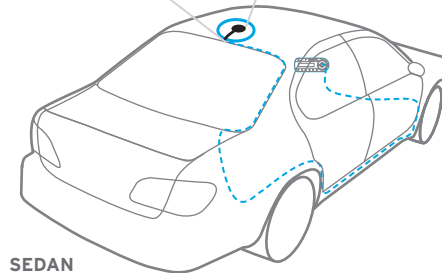
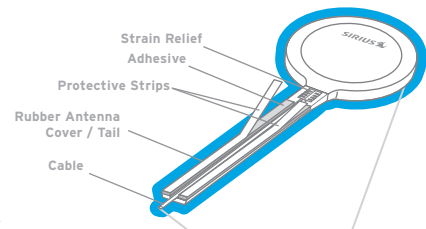
Here are some general guidelines. For more tips and details, check out your User Guide or go to sirius.com/vehicleinstall/

A. Placing the antenna outside.

Leave at least 3" of metal around the antenna. Use the rubber tail cover to hide and protect the exposed wire. Feed the wire under the rubber molding around the back windshield, into the seal around the trunk. Route the cable along trunk wall and into the interior cabin from there.

B. Hiding the antenna wire inside.

The best place to hide your antenna wire depends on your vehicle. It's usually easiest to run the wire from the rear of the vehicle to the front toward the radio by routing the cable along the interior trim where it meets the carpet, by gently pushing it behind the edges of the trim. Then bring the cable out from trim and route under carpet to dashboard or console. Plug cable into the radio and coil extra wire under carpet or floor mat.



Antenna placement options for other vehicles.

PICKUP TRUCK
Above front windshield, on the roof toward front of cab. Centered between right and left sides.

CONVERTIBLE
On trunk lid, at least 3" from seam. Centered between right and left sides.



BE CAREFUL: STOP and read the more detailed instructions – or get a pro to help. If you don't understand what to do next, you might accidentally do damage to your ride.



BE SAFE: Not properly placing or installing the antenna can create safety hazards during an accident.



BE SMART: A dry car is nice. Avoid damaging or compromising the window and trunk seals.

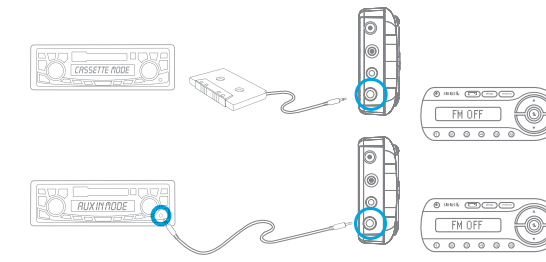
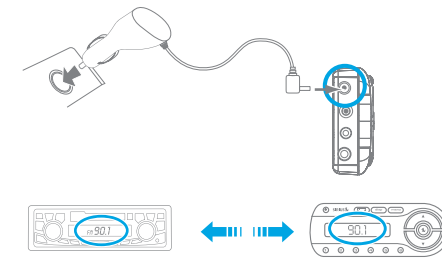


BE SMART: Use a tool like a blunt plastic putty knife to help hide wires along the trim.

3 Almost there. Connect the audio to your car stereo.



BE SMART: Other options – like a direct FM connection or rear Auxiliary Input – may give you better audio quality, but may require pro installation.



Audio Quality GOOD BETTER BEST



First, power up.

Plug in your A/C power cord. This goes into your cigarette lighter. Now, choose either A, B or C below.

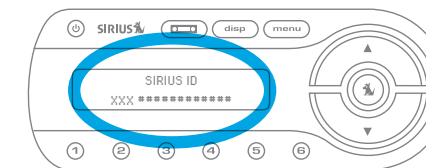
OPTION A Wireless FM

Select an FM station on your radio that is not in use – you should only hear static. (Visit sirius.com/fmchannel to find available stations in your area.) Turn on the InV2 and press and hold the **FM Preset button** for 2 seconds to access the FM Presets list. Then choose FM Preset 1-5 to program and match the same FM station as your car radio.

OPTION B Cassette Adapter
Sold separately.

OPTION C Input Jack (Aux / Line In)
Found in some newer vehicles.

4 Nice job. Now just get your ID and subscribe!



Test your radio and get its ID.

Please turn to channel #184 to make sure your radio is getting signal and sound. Now find the 12 digit SIRIUS ID number on the bottom of the box or by selecting: **Power > Menu > SIRIUS ID (or) channel #0**

Activate your radio.

Subscribe online: home.sirius.com/webCUWI (or) subscribe by phone: **1.888.539.7474**

NOTE: You'll only need to do this step if you're using **OPTION A** Wireless FM in **STEP 3** to connect to your car radio.

The FM Extender Antenna (FEA) brings the FM signal transmitted by your SIRIUS radio closer to your vehicle's FM antenna to provide a strong FM signal for good reception.

A. Positioning FEA inside.

The FEA should be mounted vertically on the inside of the windshield at the edge of the glass nearest the antenna.

B. Cleaning the suction cup area.

Wipe the area where the suction cups will be mounted with the alcohol swab provided.

C. Attaching the FEA.

Wire between the two suction cups should be as straight as possible and shouldn't obstruct the driver's view.

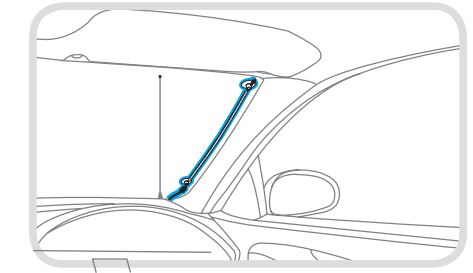
D. Connecting to the vehicle dock.

Plug FEA into the FM OUT connector of the vehicle dock.

E. Hiding the wires.

Hide the wires same as antenna.

AERIAL TYPE FRONT FENDER OR HOOD MOUNTED FM ANTENNA

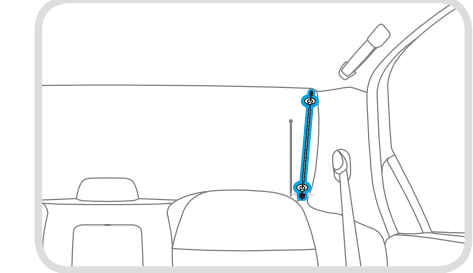


BE SMART: Because of the various FM antennas found in vehicles and their numerous locations, SIRIUS suggests professional installation of this item. Consult your User Guide for more info.



BE CAREFUL: Test mount your FEA first using the suction cup mounts provided. Once a good location has been found, permanently adhere the FEA using the adhesive mounts.

AERIAL TYPE REAR FENDER OR TRUNK MOUNTED FM ANTENNA



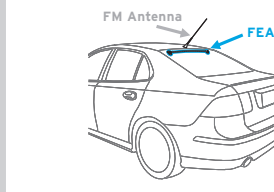
BE SMART: Clean the area where the suction cups will be mounted with the supplied alcohol swab.



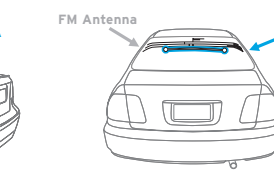
BE SAFE: In some states it may not be legal to put the FEA on the front windshield glass. In these cases, the FEA should be mounted on the A-Pillar adjacent to the FM antenna.

FM Antenna options for other vehicles.

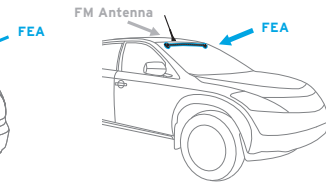
Please refer to your User Guide for detailed instructions for other antenna types.



REAR ROOF TOP MOUNTED FM ANTENNA



IN GLASS FM ANTENNA



FRONT ROOF TOP MOUNTED FM ANTENNA



BE SMART: Be sure FEA is as close to FM antenna as possible.