

# Twin Falls School District Registration Guide 2019-2020

---

Canyon Ridge High School



Twin Falls High School

---

**...Your guide to:**

- Twin Falls School District Graduation Requirements
- Course descriptions and class options
- Dual credit classes offered at your school
- Focusing on the future by exploring career cluster course options
- Much more!



## Table of Contents

|  |    |                                     |    |
|--|----|-------------------------------------|----|
| <b>Advanced Opportunities</b>                          | 3  | <b>ENGINEERING</b>                  | 12 |
| Idaho Digital Learning (IDLA) Courses                  | 3  | <b>ENGLISH</b>                      | 13 |
| AP Courses   | 3  | <b>ENGLISH AS A SECOND LANGUAGE</b> | 15 |
| Placement Scores                                       | 3  | <b>FAMILY AND CONSUMER SCIENCE</b>  | 15 |
| CLEP   | 3  | <b>GENERAL ELECTIVES</b>            | 16 |
| <b>Dual Credit Courses</b>                             | 5  | <b>GRAPHIC COMMUNICATIONS</b>       | 18 |
| Course Correlations with the College of Southern Idaho | 5  | <b>HEALTH</b>                       | 18 |
| <b>Career and Technical Education</b>                  | 6  | <b>INFORMATION TECHNOLOGY</b>       | 19 |
| Technical Competency Credit                            | 6  | <b>MATHEMATICS</b>                  | 20 |
| Registration & Articulation Procedures                 | 6  | <b>PERFORMING AND VISUAL ARTS</b>   | 21 |
| <b>High School Application/Approval Classes</b>        | 7  | Art                                 | 21 |
| <b>Graduation Requirements</b>                         | 8  | Music                               | 22 |
| Other Graduation Requirements                          | 8  | Theatre                             | 23 |
| <b>NCAA Eligibility</b>                                | 9  | <b>PHYSICAL EDUCATION</b>           | 24 |
| <b>Policies and Procedures</b>                         | 9  | <b>SCIENCE</b>                      | 25 |
| <b>AGRICULTURE</b>                                     | 10 | <b>SOCIAL STUDIES</b>               | 26 |
| <b>AUTOMATED MANUFACTURING</b>                         | 10 | <b>SUPPORT SERVICES</b>             | 27 |
| <b>BUILDING CONSTRUCTION</b>                           | 11 | <b>WELDING</b>                      | 27 |
| <b>BUSINESS MARKETING AND TECHNOLOGY</b>               | 11 | <b>WORLD LANGUAGES</b>              | 28 |

## Advanced Opportunities

[Idaho Advanced Opportunities Homepage](#)

Twin Falls School District will create student accounts and input information for Fast Forward funds. Students must apply for dual credit admission and enroll in their dual credit courses through the college awarding the credit.

Advanced Opportunities allow for students to individualize their high school learning plan and get a jump start on their future. These options include dual credit, technical competency credit, Advanced Placement, and International Baccalaureate programs. The Fast Forward program can provide funding

for students who participate in Advanced Opportunities.

[Advanced Opportunities Brochure](#)

[Fast Forward Participation Form](#)

To be eligible for funds, you must have a signed form on file (one time only). Please submit this form to AO coordinator.

## Idaho Digital Learning (IDLA) Courses

Web site: <https://www.idahodigitallearning.org/> View web site for course offerings each semester.

Prerequisite: Meet with your high school counselor and the IDLA site coordinator each semester.

Idaho Digital Learning is an Idaho, web-based educational program that provides students with greater access to a diverse assortment of courses. Reasons to take IDLA courses include: take a class not available on your campus, to gain experience working with an online course, make up lost credit, amend a scheduling conflict, earn concurrent college credit, take classes for early graduation. You will be scheduled into a school computer lab @ TFHS or CRHS if you take an IDLA course during your school day.

[CRHS Digital Learning Portal](#)

[TFHS Digital Learning Portal](#)

## AP Courses

Students enrolled in advanced placement courses complete college level work and prepare for nationally scored tests. Many colleges honor advanced-placement test scores by granting college credit when students enroll. TFHS/CRHS offers the following advanced placement (AP) classes:

Biology  
Calculus AB  
Calculus BC

Chemistry  
Computer Science Principles  
English Language and Composition (11)

English Language and Literature (12)  
Environmental Science  
Physics 1: Algebra-Based

## Placement Scores

Each College or University establishes their own placement scores for Math and English courses. Below is an example from the College of Southern Idaho

### Mathematics

| ACT  | SAT   | ALEKS | Course Placement     |
|------|-------|-------|----------------------|
| < 20 | < 480 |       | Must take ALEKS      |
| ≥ 20 | ≥ 480 | ≥ 30  | MATH 123             |
| ≥ 23 | ≥ 550 | ≥ 46  | MATH 143 or MATH 153 |
| ≥ 26 | ≥ 600 | ≥ 61  | MATH 144 or MATH 147 |
| ≥ 27 | ≥ 620 | ≥ 61  | MATH 160             |
| ≥ 29 | ≥ 660 | ≥ 76  | MATH 170             |

### English

| ACT   | SAT     | Course Placement               |
|-------|---------|--------------------------------|
| ≤ 17  | ≤ 440   | Must take THE WRITE CLASS      |
| 18-24 | 450-560 | ENGL 101                       |
| 25-30 | 570-690 | ENGL 102 (Credit for ENGL 101) |
| ≥ 31  | ≥ 700   | Credit for ENGL 101 & 102      |

## CLEP

The Educational Testing Services College Level Equivalency Program (CLEP) Tests: Some Idaho colleges and universities provide credit for CLEP General or CLEP Subject examinations, or both. CLEP General Examinations cover broad areas of study such as mathematics, history, etc. For more Information on AP, CLEP and dual enrollment programs, contact your high school counselor. (Dual enrollment is coursework where a secondary student is enrolled in a college level course that is also counted as a secondary course for graduation purposes.)

# Academic Certificate

The Academic Certificate is intended for students who plan to complete their Associate of Arts or Associate of Science degree or who intend to transfer into a baccalaureate program in an Idaho College or University. Students must complete the minimum number of credits indicated, from each of the following areas, in order to meet the certificate requirements.

**CSI Academic Certificate Information:** [https://www.csi.edu/prospectiveStudents\\_highSchool/Academic-Certificate-Requirements.pdf](https://www.csi.edu/prospectiveStudents_highSchool/Academic-Certificate-Requirements.pdf)

These dual credit courses will be offered at either Canyon Ridge High School or Twin Falls High School. They can be used to complete the Academic Certificate.



## Written Communication

Minimum credits: 6

AP English 11 – ENGL 101 English Composition 1



## Oral Communication

Minimum credits: 2

COMM 101 Fund of Oral Communication



## Mathematical Ways of Knowing

Minimum credits: 3

MATH 143 College Algebra  
MATH 147 Precalculus  
MATH 153 Elementary Statistics  
AP Calculus AB – MATH 170 Calculus 1  
MATH 170 CSI Calculus 1



## Scientific Ways of Knowing

Minimum credits: 7 (from two different disciplines with at least one laboratory or field experience)

Biology – BIOL 100 Concepts of Biology  
AP Biology – BIOL 201 Biology 1  
Honors Chemistry – CHEM 101 Introduction to Chemistry  
Astrophysics – PHYS 101 Survey of Astronomy



## Humanistic and Artistic Ways of Knowing

Minimum credits: 6

(from two different disciplines)

AP English 12 – ENGL 175  
Introduction to Literature  
SIGL 101 American Sign Language 1  
SIGL 102 American Sign Language 2  
DC Spanish 101 – SPAN 101  
Elementary Spanish 1  
DC Spanish 102 – SPAN 102  
Elementary Spanish 2



## Social and Behavioral Ways of Knowing

Minimum credits: 6

(from two different disciplines)

ECON 201- Prin & Prob of Macro Economics  
DC US History 11 A – HIST 111 US History 1  
DC US History 11 B – HIST 112 US History 2  
Advanced American Government – POLS 101  
American National Government  
PSYC 101 General Psychology

## Dual Credit Courses

Both Canyon Ridge and Twin Falls High Schools offer many dual credit courses on their campuses. The following is a list:

Course name – CSI name – # of credits.

### Agriculture

- Animal Science – AGRI 109 – 2 credits – TFHS
- Applied Livestock Management – AGRI 109L – 1 credits – TFHS
- Plant Science – AGRI 102/102L – 4 credits – TFHS

### Business

- Accounting II – ACCT 201 – 3 credits – TFHS
- Accounting III – ACCT 202 – 3 credits – TFHS
- Intermediate Microsoft Office- BUSA 215 – 3 credits – TFHS
- Macro Economics – ECON 201 – 3 credits
- Personal Finance – FINA 102 – 3 credits – TFHS

### English

- AP English 11 – ENGL 101 – 3 credits
- AP English 12 – ENGL 175 – 3 credits
- Communications 101 – 3 credits

### Health

- CNA & CNA Lab – ALLH 6 credits – CRHS
- EMT & EMT Lab – EMEM 102/102L – 10 credits – TFHS
- Health – WELL 255 – 3 credits – CRHS
- Medical Terminology – ALLH 101 – 2 credits
- Orientation to Health Occupations – ALLH 202 – 2 credits

### Mathematics

- AP Calculus AB – MATH 170 – 5 credits – TFHS
- Calculus – MATH 170 – 5 credits – CRHS
- College Algebra – MATH 143 – 3 credits
- Trigonometry- MATH 144- 2 credits
- Statistics- MATH 153- 3 credits- CRHS
- Precalculus – MATH 147 – 5 credits

### Physical Education

- Beginning & Varsity Body Development – HACT 115 – 1 credit – CRHS
- Cardio Fitness & Strength Training – HACT 117 – 2 credits
- Lifetime Sports – HACT 103 – 1 credit
- Spinning – HACT 130 – 1 credit

### Science

- AP Biology – BIOL 201 – 4 credits
- AP Environmental Science – BIOL 102 – 4 credits – TFHS
- Astrophysics (Astronomy) – PHYS 101 – 4 credits – TFHS
- Biology – BIOL 100 – 4 credits
- Environmental Science – BIOL 102 – 4 credits – CRHS
- Honors Chemistry – CHEM 101 – 4 credits
- Human Structures & Function – BIOL 105 – 4 credits

### Social Studies

- Advanced American Government – POLS 101 – 3 credits
- Dual Credit US History 11 – HIST 111/112 – 3 credits each
- Psychology 101 – PSYC 101 – 3 credits

### Technology

- Automated Manufacturing II – MANT 105 – 3 credits – CRHS
- Automated Manufacturing III – MANT 105 – 3 credits – CRHS

### World Languages

- American Sign Language 1 – SIGL 101 – 4 credits
- American Sign Language 2 – SIGL 102 – 4 credits
- Dual Credit Spanish 101 – SPAN 101 – 4 credits
- Dual Credit Spanish 102 – SPAN 102 – 4 credits

## Course Correlations with the College of Southern Idaho

The College of Southern Idaho offers many on campus and online courses. With the principal's permission, students can enroll in these courses and receive dual credit – credit for both high school and college. Please meet with your counselor to talk about these options. CSI's web site: <http://www.csi.edu>. 2 college credits = 1 high school credit \*If students plan to enroll in these courses for CSI credit, there will be a fee.

## Career and Technical Education

Career & technical education (CTE) provides relevant career training through Idaho's public schools, online through CTE Digital, and at Idaho's six technical colleges. Every CTE program or class is aligned with careers available here in Idaho.

When you enroll in a CTE course you learn by doing, and gain real-world skills that your future employers need.

Career & technical students are incredibly successful

97% of CTE students graduated high school.

94% of CTE high school graduates found a job or moved into postsecondary education.

64% went on to college compared to 54% of all Idaho students.

93% of technical college completers found jobs or continued their education.

17 out of 20 of the most in demand jobs are associated with CTE pathways.

### Technical Competency Credit

Technical Competency Credit allows students to explore their technical career option in high school, then apply their high school course work toward an Associate of Applied Science degree from The College of Southern Idaho.

Benefits:

Enhanced college experience

Earlier completion of technology program

Savings on cost of college level courses

Guarantee of program placement

Earlier entry in to the skilled workforce

No duplication of high school course work

### Registration & Articulation Procedures

1. Students are eligible for articulated college credit after successfully completing the required high school course(s) as identified on the Technical Competency Credit articulation agreement.
2. To qualify for reduced fees, a high school student may register for CSI articulated courses which are part of an approved Technical Competency Credit program by submitting to the CSI Admissions and Records office the required registration forms along with the current per credit transcription fee.
3. An official high school transcript must be sent from the high school directly to the CSI Admissions and Records office before articulated credit is placed on a CSI transcript.

Request for TCC: <http://www.csi.edu/prospectiveStudents/highSchool/forms/techprep/requestTCct.pdf>

## High School Application/Approval Classes

**Some courses on this list may require an application. Application requirements are only at Canyon Ridge High School. Courses on this list offered at Twin Falls High School require an approval from the teacher of that course by signing the registration card.**

|  |                                     |
|--|-------------------------------------|
| Advanced American Government                           | English Language Acquisition I & II |
| Advanced ELL English I & II                            | GNED 101                            |
| All Math Courses                                       | Graphic Communications II & III     |
| All Music Courses                                      | Honors Biology                      |
| Aides: Attendance, Front Office, and Counselor         | Honors Earth Science                |
| American Sign Language I & II                          | Honors English 9                    |
| AP Biology   | Honors English 10                   |
| AP Computer Science Principles                         | IDLA – Counselor Approval           |
| AP English 11 Language & Composition                   | Intro to Ag Industry                |
| AP English 12 / English 175 Literature and Composition | Introduction to Culinary Arts       |
| Applied Greenhouse and Nursery Management              | Instructor Aide                     |
| Applied Livestock Management                           | IT Help Desk I, II & III            |
| Automated Manufacturing II & III                       | Library Skills                      |
| Art History  | Media Skills                        |
| Beginning Body Development                             | Medical Terminology                 |
| Bruin News/Riverhawk Publications                      | Occupational and Career Experience  |
| Building Construction II & III                         | Orientation to Health Occupations   |
| Civil Engineering & Architecture I & II                | Partners                            |
| CNA & CNA Lab  | Pottery II, III, & IV               |
| Debate I   | Production & Design I/II/III        |
| Debate 2/Declamation                                   | Psychology 101                      |
| Digital Art & Design II, III, IV                       | Read 180                            |
| Drawing & Painting II                                  | Sports Medicine Class               |
| Dual Credit US History 11                              | Sports Medicine Clinical            |
| Early Childhood Professions A & B                      | Student Leadership                  |
| Education Assistant A & B                              | Studio Art III & IV                 |
| Elementary Assistant                                   | Theater II & III                    |
| ELL Academic Support                                   | Welding III                         |
| ELL Math I & II  | Varsity Body Development            |
| EMT & EMT Lab  | Yearbook/Riverhawk Publications     |

# Graduation Requirements

## Total Credits Required for Graduation – 52 Credits

### Language Arts – 9 credits

English – 8 credits and Speech – 1 credit

### Mathematics – 6 credits

Including Algebra I and Geometry standards. Two (2) credits must be completed in the last year of high school.

### Social Studies – 8 credits

Freshman History, two years of US History, Economics and American Government

### Science - 6 credits

4 credits lab-based

### Humanities - 2 credits

Two consecutive years of world language encouraged

### Health – 1 credit

### Physical Education - 2 credits

Must complete at least one PE credit in grades 10th, 11th, or 12th

### Computer Electives - 2 credits

Starting Class of 2022 must include Beg MS Office

### Electives - 16 credits

Must include Freshman Transitions – 2 credits, students transferring after the 9th grade will NOT need to retrieve credit for Freshman Transitions

## Other Graduation Requirements

### Senior Project

Graduating seniors are required to complete a Senior Project. There are four main components to the Senior Project that must be completed prior to graduation:

1. Project Proposal (Completed Junior Year in Advisory)
2. Research Paper (Completed 1st Semester Senior Year in English 12)
3. Physical Project (Completed by February of Senior Year)
4. Presentation/Portfolio (Presentation in March of Senior Year)

Students will work closely with their advisor, a community mentor, and their parent/guardian to complete the senior project.

#### **Senior Project:**

<http://www.tfsd.k12.id.us/tfsd/Senior%20Project.pdf>

### College Entrance Exam

Idaho high school graduation requirements state that all 11th graders must take a college entrance exam (SAT or ACT) before the end of the junior year.

Because this is mandated, the Idaho State Department of Education will pay for a school day administration of the SAT for each 11th grader.

If a junior student has already taken or wants to take the SAT or ACT prior to the April test date on their own time and money, they will not have to take the SAT on the Idaho SAT School Day (in this case, official test scores must be given to the Counseling Center). Juniors who have not tested before the April test date are required to take the SAT.

If a junior student has already taken one of these tests and still wants to take the SAT on this test day, they can and it will be paid for by the state.

### Civics Test

Beginning in the 2016-2017 school year, Idaho students will be required to take the United States Citizenship Test as outlined in Idaho Code §33-1602.7. The civics test may be taken at any time after enrolling in grade 7 and it may be repeated as often as necessary for the student to pass the test. Districts are required to assess all one hundred (100) questions of the US Citizenship Naturalization Test; however, districts have the ability to decide how the assessment is given, i.e. multiple choice, question and answer, orally, etc. Districts will also determine the passing percent a student will need in order to fulfill the graduation requirement. Students may take the assessment anytime between their 7th and 12th grade year. Please note that the instructions on the assessment by the US Citizenship and Immigration Services are not the rules for district administration, but for someone to become a US citizen, please disregard.

#### **Study Guide:**

<http://www.sde.idaho.gov/assessment/civics/files/general/Civics-Questions-for-the-Naturalization-Test.pdf>

**ALL REQUIREMENTS MUST BE MET BEFORE GRADUATION**



## NCAA Eligibility

### **NCAA Eligibility Center Registration**

<https://web3.ncaa.org/ecwr3/>

### **2016 Division I Academic Requirements**

[http://www.ncaa.org/sites/default/files/2017\\_DI\\_Requirements\\_Fact\\_Sheet\\_20170103.pdf](http://www.ncaa.org/sites/default/files/2017_DI_Requirements_Fact_Sheet_20170103.pdf)

### **Division II Academic Requirements**

[http://fs.ncaa.org/docs/eligibility\\_center/Eligibility\\_Rules/DII\\_Academic\\_Requirements.pdf](http://fs.ncaa.org/docs/eligibility_center/Eligibility_Rules/DII_Academic_Requirements.pdf)

### **2018 Division II New Academic Requirements**

[http://www.ncaa.org/sites/default/files/2017\\_DII\\_Requirements\\_Fact\\_Sheet\\_20170103.pdf](http://www.ncaa.org/sites/default/files/2017_DII_Requirements_Fact_Sheet_20170103.pdf)

## Policies and Procedures

### **Grading Periods**

Students and parents have access to progress reports and grade reports through Power School. Only semester grades and credits earned are recorded on the transcript. Students are encouraged to take the nine-week reports home to their parents.

### **Dropping a Subject**

No student may drop a class after the second week of the class without taking a WF (withdraw fail) for the semester. No student may begin a new course after the second week of any given period or semester. Any student withdrawn from a course at any time during the semester because of disciplinary problems will receive a WF for the semester and placed in the P.A.S.S. room. Exception to the above policies will require administrative approval.

### **Withdrawals**

Students withdrawing from TFHS/CRHS to transfer into another school district must take the following steps at least one day prior to leaving school.

1. Students must pick up a withdrawal slip from the Attendance Office, turn in all loaned books (class and library) and pay all fines.
2. Transcripts will be sent upon request to the school to which the student is transferring.
3. Students missing 10 consecutive school days without parent/guardian verification will be withdrawn from school.
4. Students who withdraw prior to the end of the semester will not be awarded semester credits.

### **Changing a Class**

Students must register for required courses first and then select elective courses. This decision needs to be made carefully in consultation with parents, teachers, advisors, and counselors. This process allows us to provide an excellent academic program and ensure effective use of resources. Therefore, the changing of classes is discouraged unless one of the following conditions exists:

1. Course change is made to meet graduation requirements.
2. Student does not have the required prerequisite for the course.
3. Repeating a course by error.
4. Student failed the class previously with assigned instructor.
5. Teacher recommendation.

### **High School Athletic Eligibility Policy**

To be eligible to participate in athletics, a student must be currently enrolled in a minimum of 5 credit courses and must have passed 5 credits in the previous 18 week period and maintain a 2.0 GPA per semester.

## AGRICULTURE

### **Introduction to Ag Education** 1 cr

**CRHS/TFHS – E** 9

A basic introductory course designed to introduce students to Agriculture and the FFA. Topics that will be covered are soil science, leadership, intro to animal science. Students are expected to join the FFA. The course offers many local field trips.

### **Introduction to Ag Industry** 1 cr

**CRHS/TFHS – E** 9

A basic applied course designed to enhance student's perceptions of agriculture, its applications, and career opportunities, with additional FFA opportunities which may include the FFA day on the hill in Boise. (This is the second semester of Intro to Ag Education but may be taken separately with instructor permission.) *Prerequisite: Introduction to Ag Education.*

### **Animal Science** 1 cr

**TFHS – SCI – DC (CSI: AVS 109)** 10/11/12

A course designed to develop knowledge and skills pertaining to nutrition, reproduction, diseases, breeding, genetics, anatomy, and physiology in livestock. Students will be expected to design and carry out a semester project.

### **Applied Livestock Management** 1 cr

**TFHS – SCI – DC (CSI: AVS 109L)** 10/11/12

A course that includes principles of animal production and management. Topics include health, evaluation, selection, feeding, and management. Students will be expected to design and carry out a semester project. *Prerequisites: Intro to Ag Education or Industry and Animal Science or Instructor approval.*

### **Plant Science** 1 cr

**TFHS – SCI – DC (CSI: AGRI 102/102L)** 10/11/12

A course that prepares students to produce greenhouse/nursery plants and to maintain plant growth. Includes plant processes and propagation structures. This course qualifies for science credit. Students will be expected to design and carry out a semester project.

### **Applied Greenhouse and Nursery Management** 1 cr

**TFHS – SCI – TCC (TVCC)** 10/11/12

A course designed to prepare students in greenhouse and nursery operation and management. Students will spend much of the course in the greenhouse growing plants, understanding the planning and operation of the greenhouse, and marketing the greenhouse products. Topics will also include soils, pesticides, insects, plant ID and nomenclature. This course qualifies for science credit. Students will be expected to design and carry out a semester project. This is a spring semester course. *Prerequisites: Intro to Ag Education or Industry and Plant Science or have Instructor approval.*

### **Introduction to Ag Mechanics** 1 cr

**TFHS – E – TCC (TVCC)** 10/11/12

A course designed to familiarize the student with the basic mechanical theory and skills. Students will develop skills in the areas of Electricity, Plumbing, Painting, Metal Working, and

small engine repair. Emphasis will be placed on safety and proper use of tools and equipment.

### **Occupation and Career Experience** 1 cr

**CRHS/TFHS – E** 11/12

A community based work experience activity organized and planned to develop advanced skills necessary to gain and maintain employment. This course may encompass a broad range of paid/unpaid work experiences related to the career objectives of the student. The experiences must be supervised and monitored by the teacher and cooperating business. Student must have transportation. *Prerequisites: Instructor approval and interview.*

## AUTOMATED MANUFACTURING

### **Intro to Automated Manufacturing** 1 cr

**CRHS – E – (CSI, TCC available)** 9/10/11/12

**9th graders recommended to have a C or better in Math**

This is an abbreviated, one semester Automated Manufacturing I. Participants will get hands-on use in creating physical, virtual and electronic products that can be used in the world around them. Items that will be explored are 1. What is Automated Manufacturing, 2. Automation Controls and Mobile Robotics, 3. G-Code and Automated Machining. Continuing in this course of study can lead to an automated manufacturing related industry certification. Students can continue to Automated Manufacturing II after taking this class.

### **Automated Manufacturing I** 2 cr

**CRHS – E – (CSI, TCC available)** 9/10/11/12

**9th graders recommended to have a C or better in Math**

This is a year-long introductory course in the Automation of Manufacturing and Machining. Participants will get hands-on time to create physical, virtual and electronic products that can be used in the world around them. Items that will be explored are 1. Safety and Tool Usage, 2. Measuring and Product Designs (CAD), 3. Power System Principals, 4. Manufacturing Processes, 5. Electronics and Instrumentation Principles, 6. Machining and Additive Manufacturing, 7. Robotics and Material Handling. Continuing in this course of study can lead to automated manufacturing related industry certifications.

### **Automated Manufacturing II** 2 cr

**CRHS – E – DC (CSI: MANT 105)** 10/11/12

**Auto MFG I class with a C or higher & Teacher Approval**

This is year two of three in Automated Manufacturing. The focus will be on learning Automated Machining, Robotics and other automation principles. Certifications include SOLIDWORKS, CSWA AND NIMS Machining Level 1.

### **CAPSTONE: Automated Manufacturing III** 2 cr

**CRHS – E – DC (CSI: MANT 105)** 11/12

**Auto MFG I and II with a C or higher & Teacher Approval. Students should be concurrently enrolled in Auto MFG III Lab.**

This is the third course in a three course program. A focus on CNC Machining and Programmable Logic Controllers will be taught the first semester. Second semester, a senior project that combines all automated manufacturing processes learned to-date will be undertaken. Certifications include SOLIDWORKS, CSWA and NIMS Machining Level 1.

**Automated Manufacturing III Lab** 2 cr  
**CRHS – E – DC (CSI: MANT 105)** 11/12  
**Concurrent enrollment in Auto MFG III. Students should be concurrently enrolled in Auto MFG III.**  
 This lab is for students to create their own project based upon the skills learned in the previous classes.

**Computer Integrated Manufacturing (CIM)** 2 cr  
**CRHS – E – TCC (CSI)**  
**10/11/12**  
 This class is similar to Automated Manufacturing I. More emphasis will be placed on the Robotics, drafting and technical aspects of the course that will prepare students for engineering related curriculum. This class is designed to better prepare students for future careers in Engineering, Manufacturing, Robotics, and Machining related fields. *Prerequisites: Passed PLTW IED with a C or higher.*

**Occupation and Career Experience** 1 cr  
**CRHS/TFHS – E** 11/12  
*C or higher in Precision Machining I/II & Teacher Approval*  
 A school district, community, or industry (preferred) based work experience/internship activity organized and planned to develop advanced skills necessary to gain and maintain employment. This course may encompass a broad range of paid/unpaid work experiences related to the career objective of the student. The experience must be supervised and monitored by the teacher.

## BUILDING CONSTRUCTION

**Building Construction Level I** 2 cr  
**CRHS/TFHS – E** 10/11/12  
 This is the beginning level course of the Residential carpentry/building construction program. Residential carpentry/building construction is a program designed to prepare students with skills to layout, fabricate, erect, install, and repair structures and fixtures, using hand and power tools. The program includes instruction in common systems of framing, construction materials, estimating, and blueprint reading. The course also includes training in applied communications, and employability skills including leadership, human relations, and safe efficient work practices. A course designed to introduce students to basic residential carpentry and building construction. Students will earn their OSHA 10 certification.

**Building Construction Level II** 2 cr  
**CRHS/TFHS – E** 10/11/12  
 This is the second course in a three course program. A course designed to provide students with opportunities to apply the concepts and skills learned in Level I. This application based course will focus on the knowledge and skills necessary to build and repair small structures. This course will also focus on soft skills to prepare students for jobs in the construction industry. *Prerequisite: Teacher approval*

**CAPSTONE: Building Construction Level III** 4 cr  
**CRHS/TFHS – E** 11/12  
 This is the third course in a three course program. A course designed to provide students with team work, critical thinking,

problem solving, diagnostics, and repairing/building to industry standards. Emphasis of work site skills is expected at this level with the majority of the students participating in off campus work experiences. *Prerequisite: Teacher approval.*

## BUSINESS MARKETING AND TECHNOLOGY

**Accounting I** 2 cr  
**CRHS/TFHS – E – TCC (CSI)** 10/11/12  
 Accounting I emphasizes accounting principles as they relate to the basic understanding and skills required in keeping manual and computerized financial records for a business. Emphasis is on providing basic skills for the Accounting profession and /or preparation for further study in Accounting. (Sophomore – School of Finance required course)

**Accounting II** 2 cr  
**TFHS – E – DC (CSI: ACCT 201) – TCC (CSI)** 11/12  
 Accounting II reinforces and expands the basic principles and procedures learned in Accounting I and includes the study of partnerships, corporate and cost accounting systems. Computer interaction with all phases of accounting activities is an integral part of this course. *Prerequisite: B or higher in Accounting I.*

**Accounting III** 2 cr  
**TFHS – E – DC (CSI: ACCT 202) – TCC (CSI)** 11/12  
 Accounting III reinforces and expands the basic principles and procedures learned in Accounting II and includes the study of partnerships, corporate and cost accounting systems. Computer interaction with all phases of accounting activities is an integral part of this course. This class serves as a capstone course for the Accounting sequence and School of Finance. *Prerequisite: B or higher in Accounting II.*

**Advertising I-IV** 2 cr  
**TFHS – C – TCC (CSI)** 9/10/11/12  
 Marketing principles and strategies to promote products & services to satisfy consumers' needs and wants. Focus is placed on identification and analysis of product benefits, features, strategies, promotion/display, store layout, and personal selling. Implementation of industry standard pagination and graphic design software is used to plan, design, & create business & promotional documents as students identify client & target audience needs to effectively communicate the desired message using typography, graphics & design concepts. Students have the opportunity to become Adobe Certified using Certiport Testing at no additional cost. *Prerequisites: GPA 2.5 or C in English.*

**Principles of Promotion** 1 cr  
**CRHS – E** 9/10/11/12  
 Marketing principles and strategies to promote products & services to satisfy consumers' needs and wants, Focus is places on identification and analysis of product benefits, features, strategies, promotion/display, store layout, and personal selling.

**Beginning Microsoft Office** 1 cr  
**CRHS/TFHS – C – TCC (CSI)** 9 (CRHS only)/10/11/12  
 Students are introduced to word processing, spreadsheet, database, and presentation. The Microsoft Office 2016 Suite software is used to complete assignments with SAM online

courseware. Students have the opportunity to become Microsoft Office Specialists using Certiport Testing at no additional cost (Word, Excel, Access, PowerPoint).

**Intermediate Microsoft Office** 1 cr  
**CRHS/TFHS** 9 (CRHS only)/10/11/12  
C – DC (CSI: BUSA 215) – TCC (CSI)

This college level course is designed to explore the principles, terminologies, and skills associated with using Windows operating systems, word processing, spreadsheet, database, presentation & desktop publishing software functions and applications. The Microsoft Office 2016 Suite software is used to complete assignments with SAM online courseware. Students have the opportunity to become Microsoft Office Specialists using Certiport Testing at no additional cost. (Word, Excel, Access, PowerPoint). *Prerequisite: Beginning Microsoft Office.*

**Business Management/ Entrepreneurship** 2 cr  
**CRHS/TFHS – E** 10/11/12

Part I: Skills for the business manager. Emphasis on decision-making, leadership, business ethics, & effectiveness. Part II: Focus on legal, financial, marketing, & managerial issues in creating a business plan. Plan is based upon the student's interest. This course serves as a capstone class.

**Marketing Ed Lab** 1-2 cr  
**TFHS – E** 10/11/12

This course provides students with the opportunity to work in the school store and experience the responsibilities of operating a store. This course serves as a Capstone Course. *Prerequisite: Previous or Concurrent Enrollment in Economics*

**Cooperative Education** 1-4 cr  
**TFHS – E – TCC (CSI)** 12

Co-op is the work experience segment of any business/marketing course. Students are employed in a business that provides paid on-the-job experience, related to the student's area of study. This course serves as a capstone class. *Prerequisite: Concurrent Enrollment in Marketing or Business*

**Personal Finance** 1 cr  
**CRHS/TFHS – E – DC (CSI: FINA 102)** 11/12

This college level class is highly valuable to today's graduate and is recommended for all students as it deals with financial planning & money management including budgeting, insurance, social security, personal income, taxes, banking & credit, investments, & stock market strategies. Fee if taking for Dual Credit.

**Economics** 1 cr  
**CRHS/TFHS – E – NCAA** 12

Course provides for an understanding of basic economic concepts and use of economic reasoning skills to analyze economic theory, the impact of economic systems and personal financial literacy.

**Macroeconomics** 1 cr  
**CRHS/TFHS – E – DC (CSI: ECON 201) – NCAA** 12

The organization & operation of the American economy, supply & demand, money & banking, employment output, public finance, and economic growth. *Prerequisite: 3.0 GPA or higher*

**Exploring Web Design** 1 cr  
**CRHS – C** 9/10/11/12

I. Students will be introduced to the basics of web development, communication and careers which revolve around this form of web- based media. II. Exploring and developing the use of electronic markets utilizing Adobe Dreamweaver.

**Introduction to Interactive Media - Video** 1 cr  
**CRHS – C** 9/10/11/12

A course designed to introduce students to interactive technologies. Topics include: designing, editing, and producing video, audio, and graphical elements using digitally generated or computer enhanced media.

**Interactive Media - Video** 1 cr  
**CRHS – C** 10/11/12

A course designed to provide in-depth knowledge of audio-visual production equipment and processes. Students will be introduced to video editing skills and techniques for planning, designing and developing video. Skills to be obtained are file management, audio and video capturing, adding events to timelines, editing multiple video tracks, Transition, voice over production, and key framing.

**Video Production** 2 cr  
**CRHS – C** 10/11/12

A course designed to provide in-depth knowledge of audio-visual production equipment and processes. Students will be introduced to video editing skills and techniques for planning, designing and developing video. Skills to be obtained are file management, audio and video capturing, adding events to timelines, editing multiple video tracks, Transition, voice over production, and key framing. Students will create Broadcast News reports for CRHS. Time commitment outside of class may be necessary.

## ENGINEERING

**Introduction to Engineering Design 1** 1 cr  
**CRHS – E** 9/10/11/12

Introduction to Engineering Design (IED) is a high school level foundation course in the PLTW Engineering Program. In IED students are introduced to the engineering profession and a common approach to the solution of engineering problems, an engineering design process. Utilizing the activity-project-problem-based (APB) teaching and learning pedagogy, students will progress from completing structured activities to solving open-ended projects and problems that require them to develop planning, documentation, communication, and other professional skills

**Introduction to Engineering Design 2** 1 cr  
**CRHS – E** 9/10/11/12

Through both individual and collaborative team activities, projects, and problems, students will solve problems as they practice common engineering design and development protocols such as project management and peer review. Students will develop skill in technical representation and documentation of design solutions according to accepted technical standards, and they will use current 3D design and

modeling software to represent and communicate solutions. In addition, the development of computational methods that are commonly used in engineering problem solving, including statistical analysis and mathematical modeling, are emphasized. Ethical issues related to professional practice and product development are also presented. *Prerequisite: Intro to Engineering Design I.*

**Introduction to Drafting and CADD** **1 cr**  
**9/10/11/12**  
**CRHS – E**

Mechanical Drafting: An entry level course in Communications Systems which addresses the concepts needed to transfer ideas into an easily understood graphic language, designs or drawings. The use of drawing tools, including mechanical devices and computer software is essential for student studies. Each of the major areas of drafting and design should be explored on an introductory level. CADD: An entry level course in Communications Systems designed to provide students with an understanding of the operation and features of a current industrial computer aided drafting/design (CADD) system. Emphasis is placed on the application of computer software in solving basic architectural, structural, electronic or mechanical drafting problems. The purpose of the course is to assist individuals in making meaningful occupational and educational choices. Basic technical information and laboratory experiences directly related to the operation and application of computer software is provided in a hands-on approach. *Prerequisite: Intro to Engineering Design I.*

**Computer Integrated Manufacturing** **2 cr**  
**10/11/12**  
**CRHS – E**

This class is similar to Precision Machining / Automated Manufacturing I EXCEPT the student is required to be enrolled in Geometry or passed Geometry with a C or Better. More emphasis will be placed on the drafting and technical aspects of the course that will prepare students for engineering related curriculum. This class is designed to better prepare students for future careers in Engineering, Manufacturing, and Machining related fields. *Prerequisite: C or higher in Geometry or concurrent enrollment.*

**Principles of Engineering 1** **1 cr**  
**10/11/12**  
**CRHS – E**

Principles of Engineering (POE) is a foundation course of the high school engineering pathway. This survey course exposes students to some of the major concepts that they will encounter in a postsecondary engineering course of study. Through problems that engage and challenge, students explore a broad range of engineering topics, including mechanisms, the strength of materials and structures, automation, and kinematics. The course applies and concurrently develops secondary level knowledge and skills in mathematics, science, and technology. *Prerequisite: Intro to Engineering Design.*

**Principles of Engineering 2** **1 cr**  
**10/11/12**  
**CRHS – E**

Students have the opportunity to develop skills and understanding of course concepts through activity-, project-,

and problem-based (APB) learning. By solving rigorous and relevant design problems using engineering and science concepts within a collaborative learning environment, APB learning challenges students to continually hone their interpersonal skills, creative abilities, and problem solving skills. Students will also learn how to document their work and communicate their solutions to their peers and members of the professional community. It also allows students to develop strategies to enable and direct their own learning, which is the ultimate goal of education. *Prerequisite: Principles of Engineering 1.*

**Civil Engineering and Architecture I** **1 cr**  
**11/12**  
**CRHS – E**

Students will be introduced to important aspects of building and site design and development through Project Lead the Way curriculum. They will apply math, science, and standard engineering practices to design both residential and commercial projects and document their work using 3D architectural design software. Utilizing the Activity-Project-Problem-Based (APB) teaching and learning pedagogy, students will progress from completing structured activities to solving open-ended projects and problems that require them to develop planning, documentation, communications, and other professional skills. This class is designed to assist students to prepare for careers in all aspects of engineering, construction, and architecture. *Prerequisites: Principles of Engineering or Physics and Advanced Math with Teacher approval.*

**Civil Engineering and Architecture II** **1 cr**  
**11/12**  
**CRHS – E – TCC (CSI)**

This class will be a continuation of the first semester class and will concentrate on commercial building systems. These systems will structure themselves, services and utilities, site considerations, and a commercial design problem. Students will continue to use the Activity-Project-Problem-Based (APB) method of learning through the Project Lead the Way curriculum. *Prerequisite: Civil Engineering and Architecture I.*

## ENGLISH

**English 9** **2 cr**  
**9**  
**CRHS/TFHS – ENG – NCAA**

This course will cover grammar usage, language structure, vocabulary development, creative writing, poetry, short stories, novels, Shakespeare, and mythology.

**Honors English 9** **2 cr**  
**9**  
**CRHS/TFHS – ENG – NCAA**

This class is offered for students who perform beyond the freshman level on tasks related to reading, composition, and the study of language. The English 9 curriculum will be followed, but more intensive and extensive work with the reading and writing will be required. *Prerequisite: Application/Recommendation.*

**Speech** **1 cr**  
**9/12**  
**CRHS/TFHS – ENG – NCAA**

Speech is the study of practical applications of the basic skills and techniques involved in interpersonal communications and public address. The course is designed to meet the core graduation requirement of speech for those students entering high school without one credit in this area.

**English 10** **2 cr**  
**CRHS/TFHS – ENG – NCAA** **10**

English 10 is a college preparatory class which focuses on exploring, understanding and appreciating written genre. Writing encourages experimentation with the various forms taught in literature. Language development, vocabulary and grammar skills will be emphasized to enhance communication.

**Honors English 10** **2cr**  
**CRHS/TFHS – ENG – NCAA** **10**

This class is offered for students who perform beyond the sophomore level on tasks related to reading, composition, and the study of language. The English 10 curriculum will be followed, but more intensive and extensive work with the reading and writing will be required. *Prerequisites: Application/Recommendation*

**English 11** **2 cr**  
**CRHS/TFHS – ENG – NCAA** **11**

English 11 is a college preparatory class which focuses on American literature from a historical perspective. Argumentative writing will be emphasized and a research project will be required. Language study, writing style, and vocabulary development will also be emphasized.

**AP English Language and Composition 11** **2 cr**  
**CRHS/TFHS – ENG – DC (CSI: ENG 101) – NCAA** **11**

This course is designed for the able and ambitious student who wants to do college-level work while in high school. The course focuses on nonfiction writing and reading. Heavy emphasis is placed on style, rhetoric, and analysis. The numerous reading and writing assignments act as preparations for the AP Language and Composition College Board Exam to determine possible advanced standing in English or college credits upon admission to a college or university. *Prerequisites: Application/Recommendation*

**English 12** **2 cr**  
**CRHS/TFHS – ENG – NCAA** **12**

English 12 is a college preparatory class which focuses on the development of critical reading, writing, and thinking skills through the study of British literature. Composition focuses on the reflective essay and analytical essay for purposes that extend into post-high school life. A research paper tied to the Senior Project is required.

**AP English 12 Language and Composition** **2 cr**  
**CRHS/TFHS – ENG – DC (CSI: ENGL 175) – NCAA** **12**

This course is designed for the able and ambitious student who wants to do college-level work while in high school. Works will be analyzed intensively in both class discussion and in numerous

writing assignments. This course is also preparation for the AP College Board Exam to determine possible advanced standing in English or college credits upon admission to a university. AP English 11 is not a requirement. *Prerequisites: Application and Recommendation*

**Communications 101** **1 cr**  
**CRHS/TFHS – E** **11/12**

COMM 101 is a course intended to improve your communication abilities in a variety of academic, social, personal and business settings. Emphasis is placed on the communication process, public address, small group discussion, and listening.

**Read 180** **1 cr**  
**TFHS – E** **10/11/12**

Read 180 is an intensive reading intervention program designed to meet the needs of students whose reading achievement is below the proficient level. The program directly addresses individual needs through adaptive and instructional software, high-interest literature, and direct instruction in reading skills. (Scholastic Publisher) *Prerequisite: Recommendation*

**Debate I** **2 cr**  
**CRHS/TFHS – E – NCAA** **10/11/12**

This course is a challenging class, focusing on research, organization, and speaking skills for the purpose of interscholastic competition in Policy and Lincoln Douglas debate. Tournament attendance will be required. An ability to read and interpret high-level materials will be essential. *Prerequisites: Application/Recommendation and signed drug testing form.*

**Debate II Declamation** **2 cr**  
**CRHS/TFHS – E – NCAA** **11/12**

This course is designed to allow former introduction to debate students an opportunity to further develop and perfect debate and competitive speech events. Independent work skills and self-direction are required. *Prerequisites: Debate I & Recommendation and signed drug testing form.*

**Newspaper** **2 cr**  
**CRHS/TFHS – E** **10 (CRHS only)/11/12**

The newspaper class is a year-long course dedicated to the publication of the school newspaper. Students are required to do in-depth reporting and writing. All facets of newspaper work will be included: interviewing, designing (using QuarkXPress and Photoshop), computer word processing, writing and revising. Staff members are expected to have a working understanding of the process of creating a newspaper, be able to meet deadlines, and act responsibly and ethically. *Prerequisite: Application*

**Yearbook** **2 cr**  
**CRHS/TFHS – E** **10/11/12**

Yearbook/Riverhawk Review is a year-long class devoted to the publication of the school's yearbook. All facets of photo journalism, graphic design, Photoshop, layout design, In Design,

reporting, and copy writing will be included in the course curriculum. *Prerequisites: Application and Interview*

**Creative Writing I** **1 cr**  
**CRHS – HUM– NCAA** **11/12**

This course is an in-depth writing course which focuses on students' abilities to produce original pieces of literature; it is designed for students who enjoy the writing process. Students will participate in National Novel Writing Month where they will write a novel in 30 days. Students will also be writing poetry, long and short stories, and dramatic dialogue. Students must be serious about learning to write, as this class will include a possible option for publication. *Prerequisite: C or higher in English 10*

**Creative Writing II** **1 cr**  
**CRHS – HUM – NCAA** **12**

Students will spend the semester studying elements of storytelling, genres, creating their own original stories and going through the editing process. Students will be expected to create an original polished work of literature. Students will learn how to query a literary agent for representation towards publication. Students must be dedicated and focused and excited about the creative writing process.

## ENGLISH AS A SECOND LANGUAGE

**Advanced ELL English I** **1-2 cr**  
**CRHS – ENG** **9/10/11/12**

This course is a team taught English class following English curriculum and standards for ELL students with an IELA level of 1 or 2 upon instructor approval. The class is recommended for low to intermediate proficiency ENL students who have not exited out of the ELL program. *Prerequisite: Instructor Approval*

**Advanced ELL English II** **1-2 cr**  
**CRHS – ENG** **9/10/11/12**

This is a continuation of Adv. ELL English I for students with 3 or 4 on IELA in need of English credit and upon instructor approval. This course is a team taught English class following English curriculum and standards for ELL students with an IELA level of 2 or 3 upon instructor approval. The class is recommended for intermediate proficiency ENL students who have not exited out of the ELL program. *Prerequisite: Instructor Approval*

**ELL Math I** **1-2 cr**  
**CRHS – E** **10/11/12**

This course is team taught by ESL and Math departments. The focus of ESL Math I is on learning the English vocabulary necessary to learn math in an English speaking country. The course content will be modified based on the students' prior knowledge. Students will focus on communicating their reasoning in writing and orally using the appropriate English mathematical vocabulary. Goals include the learning of mathematical language and applying essential foundational concepts. *Prerequisite: Instructor Approval*

**ELL Math II** **1-2 cr**  
**CRHS – E** **10/11/12**

This is a continuation of ELL Math 1. This is a co-taught class between a Math & ELL teacher of mainstream Math content and curriculum. *Prerequisite: Instructor Approval*

**English Language Acquisition I/II** **1-2 cr**  
**CRHS – ENG** **9/10/11/12**

This course is designed for recent arrivals to the country with a score of 1 or 2 on the IELA test. Classes will focus on reading, writing, speaking and listening. *Prerequisite: Instructor Approval*

**English Language Acquisition III** **1-2 cr**  
**CRHS – E** **9/10/11/12**

Students who have limited English abilities, with a score of 3 on the IELA, and need additional time to improve their reading, writing, listening and speaking skills. *Prerequisite: A score of 3 on the IELA*

**ELL Academic Support** **1-2 cr**  
**CRHS – E** **9/10/11/12**

The class is intended for intermediate to advanced English Language Learners who still need support with their classes and assignments. They will receive help reading and understanding the instructions of the assignment, help and guidance using correct grammar and sentence structure on their papers, and extra time to complete assignments and tests. Students will be admitted in this class by teacher approval only. They will be given an elective credit for this class. *Prerequisite: Instructor Approval.*

## FAMILY AND CONSUMER SCIENCE

**Teen Living** **1 cr**  
**CRHS/TFHS – E** **9**

This course equips students with essential life skills; emphasizing practical experiences in personal development, relationship skills, managing resources, food and nutrition, child development, and career exploration.

**Parenting and Child Development** **1 cr**  
**CRHS – E – TCC (CSI)** **10/11/12**

This is a one semester course that emphasizes parenting choices and parenting decisions. Content includes pregnancy stages of prenatal development and the physical, intellectual, social and emotional development of the infant and young child. This course is designed to strengthen parenting and guidance skills, positive family relationships, safety, and health practices. Students will learn to evaluate child care services and to explore careers related to young children. This course is a prerequisite for Early Childhood Professions and the Education Assistant programs. \*\*Tech Comp credits only available if student completes Early Childhood Professions also.

**Adult Living** **1 cr**  
**CRHS – E** **11/12**

The Adult Living curriculum focuses on the young adult as an individual balancing responsibilities of home, family, community and work environments. The student will gain relationship and life skills, knowledge of relationship roles and responsibilities, problem solving, resource management skills, leadership and 21st century employability skills.

**Fashion Textiles** **1 cr**  
**CRHS – E** **10/11/12**

Fashion and Textiles explores a burgeoning industry where teens see themselves as active stakeholders. This course reflects on fashion history, exposes students to the science of textiles, and requires students to demonstrate knowledge and skill in various applications of basic design. Students examine the social and psychological aspects of fashion, understanding how acquisition of clothing has changed over time.

**Nutrition and Foods** **1 cr**  
**CRHS/TFHS – E – TCC (CSI)** **10/11/12**

This course is designed to address nutrition and personal lifestyle choices relating to diet. Content emphasis is on food preparation, meal management skills, consumer skills, the impact of nutrition on our lives, and career options in nutrition related fields. This is a prerequisite for Intro to Culinary Arts.

**Introduction to Culinary Arts** **2 cr**  
**TFHS – E – TCC (CSI)** **11/12**

Students will receive a basic foundation in professional food preparation with practical application in our student run coffee shop. Good attendance and work ethics are essential in this class. Students will need to pay a \$35.00 fee for the Technical Skills Assessment at the beginning of 1st semester when they enter this course. *Prerequisites: Nutrition & Foods, Application, & Instructor Approval*

**Early Childhood Professions** **4 cr**  
**CRHS – E – TCC (CSI)** **11/12**

Early Childhood Professions is designed to prepare students for employment in entry level positions in the field of early childhood care, education, and related services or for further education in early childhood professions. Classroom learning experiences target employability skills, standards and laws, as well as management in early childhood professions. Child development and guidance, health and safety, nutrition, and on-the-job training are also emphasized throughout the program. This two-semester, double block course constitutes an occupational sequence. Successful completion of Parenting & Child Development is a prerequisite to enrollment. FCCLA activities are a part of the program. Good attendance, work ethic, and punctuality are essential to success. Students must have their own transportation. Prospective students must complete application, and meet with instructor to receive approval for registration. **\*\*Tech Comp Credits 9.** Includes those earned in Parenting & Child Development. *Prerequisites: Parenting & Child Development, Application, & Instructor Approval*

**Education Assistant A & B** **4 cr**  
**CRHS – E – TCC (CSI)** **11/12**

The Education Assistant Program provides students with an opportunity to interact with students and support a classroom teacher. The student will be able to observe students in classroom situations, work one-on-one with students from diverse populations, assist with both small and large groups of students, and observe and demonstrate professional practices. This double block class is part of a recommended course selection within Professional Technical Education and may articulate to a post-secondary education program. Successful completion of Parenting & Child Development is **STRONGLY RECOMMENDED** as a prerequisite to enrollment (requirement waived 2014-15). FCCLA activities are a part of the program. Good attendance, work ethic, and punctuality are essential to success. Students must have their own transportation. Prospective students must complete application, and meet with instructor to receive approval for registration. **\*\*Tech Comp 4** *Prerequisites: Parenting & Child Development Strongly Recommended Application & Instructor Approval*

**GENERAL ELECTIVES**

**IDLA** **9/10/11/12**  
**CRHS/TFHS**

These are online courses taken during the school day in a supervised computer lab or they may be taken after hours at home. Course fees are \$75 per credit. No IDLA charge for DC or AP courses. Students who have failed a course can retrieve the credit through IDLA. Fees can be waived for credit retrieval, schedule conflict or class not offered. There are AP, Dual Credit and Elective Courses offered. Students must meet with a counselor prior to registering for a course. *Prerequisite: See Counselor*

**Freshman Foundations** **2 cr**  
**TFHS – E** **9**

This course is required for all incoming freshmen and focuses on helping students prepare for high school and post-high school experiences. Students will examine learning styles, personal and social development, and career/life skills. This course will also set a foundation for doing research and preparing for the senior project.

**Take the LEAD 101** **2 cr**  
**CRHS – E** **9**

This course is required for all incoming freshman. The central purpose of Take the LEAD 101 leadership course is to provide freshman students support to be successful in their foundational year of high school and to empower them to take the LEAD (Living to Earn and Achieve our Dreams) in preparing for success in college, career, and life.

**Take the LEAD 102** **1-2 cr**  
**CRHS – E** **10**



Take the LEAD 102. Sophomores may elect to take this semester-long, Find Your Voice course to help discover what might be their greatest contribution as a career path in life. This course will be delivered in a real-world, hands-on, project-based way. The purpose of the Take the LEAD courses is to provide more learning and leadership opportunities to empower students to take the LEAD in preparing for success in college, career, and life. This course will help students get the most out of high school to successfully prepare for on-time graduation college readiness.

**Library Skills** **1-2 cr**  
**CRHS/TFHS – E** **10/11/12**

Library staff permission. This library internship course emphasizes library practices. Other areas included in Library Skills are customer relations and services, and skills related to office and retail business procedures. Requirements: Reliable, responsible, and dependable. Able to work independently, work creatively, file alphabetically & numerically. Good communication skills. Good attendance is absolutely essential. Students must have at least a cumulative 2.5 GPA & current grades in all classes of C or better. Students receive a Pass/Fail grade. Course may be taken more than one semester for credit. *Prerequisite: Librarian Approval*

**Media Skills** **1-2 cr**  
**TFHS – E** **10/11/12**

Media staff permission. Students assist with clerical tasks, checking out and in material, use of equipment, produce materials, and create bulletin boards. Enjoyment of art creation is a plus! Good attendance is essential. Students must have at least a cumulative 2.5 GPA & current grades in all classes of C or better. Pass/Fail course. Course may be taken more than one year for credit. *Prerequisite: Application*

**GNED 101** **1 cr**  
**TFHS – E** **10/11/12**

This course introduces students to the purpose of the General Education Program at the College of Southern Idaho. Students will understand how general education supports the mission of the College; enhances degree programs; enriches understanding of the self, society, and the natural world; provides a basis for inquiry, expression, and problem-solving; and contributes to lifelong learning and wellness. Students will be introduced to strategies fundamental to college success. Students are encouraged to complete this class within their first 15 credits. See the current course schedule for individual section descriptions.

**Attendance Aide** **1-2 cr**  
**CRHS/TFHS – E** **11/12**

Students may sign up with an attendance office secretary by application only. This office requires students to have a 2.00 grade average, excellent attendance, exemplary citizenship, communication skills, write legibly, be able to meet the public, and the ability to maintain confidentiality. Student clerks assist office personnel with filing, attendance office information, and

taking notes/messages to students. TFSD dress code will be strictly enforced. Students receive a Pass/Fail grade. *Prerequisite: Application*

**Counselor Aide** **1-2 cr**  
**CRHS/TFHS – E** **11/12**

Students may sign up with a counselor’s permission for elective credit during their junior and senior years in high school. Students are given a Pass/Fail grade. Student clerks will assist Counselors with filing, sorting information, taking notes/messages to students, running errands, etc. for the counseling center. Good attendance is a requirement for this class. *Prerequisite: Application*

**Elementary Assistant** **1 cr**  
**TFHS – E** **11/12**

This course is for students interested in a career in elementary education. Students have the option of working at Sawtooth elementary school with a classroom teacher. Assistants need good verbal communication skills and the ability to work with students from varied backgrounds and skill levels. You must have good attendance and at least a 2.0 GPA to be eligible. Students may sign up for one elective credit per semester for their junior and/or senior year. *Prerequisite: Application*

**Instructor Aide** **1-2 cr**  
**CRHS/TFHS – E** **11/12**

Students may sign up with a classroom teacher and receive an elective credit for each semester. Students must receive a form from the instructor to submit at the time of registration. Students can receive only two credits as an instructor’s aide. This is a Pass/Fail class. *Prerequisite: Instructor*

**Office Service** **1-2 cr**  
**CRHS/TFHS – E** **11/12**

Students may sign up with an office secretary’s permission for one elective credit a semester for a maximum of two semesters during their junior and senior years in high school. This class is by application only. This office requires students to have a 2.50 grade average (CRHS-must maintain 2.5), excellent attendance, exemplary citizenship, communication skills, write legibly, be able to meet the public, and the ability to maintain confidentiality. Student clerks will assist office personnel with answering the phone, filing, taking notes/messages to students, etc. TFSD dress code will be strictly enforced. Students receive a Pass/Fail grade. *Prerequisite: Application*

**Partners** **1 cr**  
**CRHS/TFHS – E** **11/12**

The Student PARTNERS program is designed for students to apply skills in tutoring their learning-challenged peers in a variety of academic settings. *Prerequisite: Special Ed. Teacher approval.*

**Work-Based Learning** **1 cr**  
**CRHS/TFHS – E** **11/12**

WBL class is graded as a Pass/Fail (Fail WILL affect the overall GPA calculation). Students enrolled in one period of Work Based Learning must complete a minimum of 180 hours per semester.

Students may enroll in **ONE** WBL per semester starting in his or her junior year. Students will receive a maximum of one credit per semester for 180 hours or more of documented work. Students must check in with the WBL supervisor every two weeks and provide copies of pay stubs that prove hours worked during the pay period. **Failure to check-in and report hours will result in FAIL BEING ISSUED. In the event of leaving job, it will result in FAIL BEING ISSUED.** *Prerequisite: Must have a job at the start of the semester.*

## GRAPHIC COMMUNICATIONS

**Graphic Communications I** 1 cr  
**CRHS – C** 9/10/11/12

This course is designed to introduce students to basic graphic/printing. The course will include digital photo/graphics, and computer graphics. Legal and ethical issues, employability skills, communication skills, and terminology used throughout the industry will be discussed.

**Graphic Communications II** 2 cr  
**CRHS – E** 10/11/12

A course designed to provide students with graphic printing applications including digital and computerized graphics. Transfer of images from digital processes to paper and other media is included as well as transferring paper images to digital files for modification. Pre-press and copy production skills include set-up, image development, layout, and final draft copy. *Prerequisite: Graphic Communications I and Teacher approval.*

**Graphic Communications III (Capstone)** 2 cr  
**CRHS – E** 10/11/12

A course designed to provide students with team work, critical thinking, problem solving, diagnostics, designing, and computer graphics from basic digital images to final print. Students will be provided opportunities to prepare finished products such as newsletters, catalogs, and school publications. All work will be performed to industry standards. *Prerequisite: Graphic Communications II and Teacher approval.*

**Occupational & Career Experience – Media Technologies** 2 cr  
**CRHS – E** 11/12

A school district, community, or industry (preferred) based work experience/internship activity organized and planned to develop advanced skills necessary to gain and maintain employment. This course may encompass a broad range of paid/unpaid work experiences related to the career objective of the student. The experience must be supervised and monitored by the teacher. *Prerequisite: Graphic Communications III or Teacher approval.*

## HEALTH

**Health** 1 cr  
**CRHS/TFHS – E – DC (CSI: WELL 255) CRHS only** 10/11/12

Health is designed to provide students with an appreciation and understanding of the holistic approach to the wellness concepts. Major topics covered are decision making, personality/self-esteem, and stress management. This is a recommended class for health occupation students.

**Orientation to Health Occupations** 2 cr  
**CRHS/TFHS – E – DC (CSI: ALLH 100)** 10/11/12

Health occupations is the study of healthcare and its various careers. This class introduces students to medical careers, basic anatomy and healthcare. NOTE: If taking IDLA in summer, offered as non-Dual Credit. Dual Credit ONLY offered IDLA for fall and spring semesters. Semester 1: Health (Elective if health already completed). Semester 2: elective *Prerequisite: 10th grade application*

**Medical Terminology** 1 cr  
**CRHS/TFHS – E – DC (CSI: ALLH 101)** 10/11/12

Medical Terminology is the study of medicines' unique languages. Students learn terminology, vocabulary and structure for communication in the medical fields. *Prerequisite: 10th grade application*

**Human Structure and Function** 2 cr  
**CRHS/TFHS – SCI – DC (CSI BIOL 105) NCAA** 10/11/12

This course studies both the structure and function of organ systems of the human body, (circulatory, muscular, nervous, etc.), Laboratory dissections and experiments are used to illustrate the structure and functions of the various systems. Incoming sophomores need instructor approval. Fee if taking DC. *Prerequisite: B or better in Biology or instructor approval*

**CNA/CNA Lab** 2 cr  
**CRHS – E – DC (CSI: ALLH 102)** 11/12

Certification course for nursing assistance. Students learn all the skills necessary for completion of the skills and written exams. Successful completion of course requires passing the skills and written certification exam. Must sign up for CNA and CNA Lab concurrently (7th & 8th P). Required to be taken as Dual Credit. *Prerequisites: Orientation to DC Health Occupations, DC Medical Terminology & Application*

**EMT/EMT Lab** 2 cr  
**TFHS – E – DC (CSI: EMEM 102/EMEM 102L)** 11/12

Students learn all the skills necessary for completion of the National Certification Exam. This class is ONLY offered to seniors. Successful completion of course requires passing the skills and written certification exam. Must sign up for EMT/EMT Lab concurrently. *Prerequisites: Orientation to DC Health Occupations, DC Medical Terminology & Application*

**Sports Medicine I** 1 cr  
**TFHS – E** 11/12

Exploring the field of Sports Medicine and treatment of sports related injuries. No more than 10-12 students per class. Must be enrolled in sports medicine clinical class concurrently. This will count as a Health Occ. II credit. Fall only. *Prerequisites: Orientation to Health Occupations, Medical Terminology & Application*

**Sports Medicine Clinical I** **1 cr**  
**TFHS – E** **11/12**

Cooperative learning experience in healthcare. Student will work with Athletic Trainer to fulfill clinical hours. CRHS students who come to TFHS for this class will need to arrange clinical hours with CRHS coaches. Fall only. *Prerequisites: Orientation to Health Occupations, Medical Terminology & Application*

**Sports Medicine II** **1 cr**  
**TFHS – E** **12**

We will continue to explore the field of Sports Medicine and treatment of sports related injuries. Fall only. Students must also enroll in Medicine Clinical II. *Prerequisites: B or higher in Sports Medicine I.*

**Sports Medicine Clinical II** **1 cr**  
**TFHS – E** **12**

Another semester of cooperative learning experience in healthcare. Work with the Athletic Medicine Staff to fulfill clinical hours. Fall only. Students must also enroll in Medicine II. *Prerequisites: B or higher in Sports Medicine Clinical I*

## INFORMATION TECHNOLOGY

**Introduction to Information Technology** **1 cr**  
**TFHS – E – Skill Stack** **9/10/11/12**

Course covers current and emerging computer technologies. Students are presented with the underlying principles of technologies that have an impact on our lives and how those principles are related to real-world activities. This course focuses on the application of technology and how technology may be used by students for personal and professional gain. This class introduces all other classes offered in the Information Technology Pathways.

**Web Design** **1 cr**  
**TFHS – C – Skill Stack** **9/10/11/12**

Students enrolled in this course will learn the fundamentals of Hypertext Markup Language (HTML5) and Cascading Style Sheets (CSS3) JavaScript, along with frameworks such as Bootstrap and JQuery and their vital relationship to each other. Students will distinguish the use of HTML, CSS and JS as to content and presentation. Students will demonstrate knowledge of W3C compliant websites. This class supports the Web Design Pathway. *Prerequisite: Introduction to Information Technology*

**Mobile App Development** **1 cr**  
**TFHS – C – Skill Stack** **10/11/12**

Student in this course will learn to build mobile applications for the iPhone, Android, Windows Phone, platforms using the HTML5/CSS3/JavaScript languages. This platform allows developers to develop one application that can be deployed to

all mobile platforms as a native application. It is definitely the mobile development platform of the future. This class supports the Web Design Pathway. *Prerequisite: Web Design*

**Programming Fundamentals** **1 cr**  
**TFHS – C – Skill Stack** **9/10/11/12**

This course will teach students an object-driven, event-driven computer programming language, how to design and run programs, understand code and variables, and create objects for forms and reports. For this class we focus on Python 3. This class supports the Programming and Software Development Pathway. *Prerequisite: Introduction to Information Technology*

**Web App Development & Linux** **1 cr**  
**TFHS – C – Skill Stack** **10/11/12**

Students in this course learn how to develop database-driven, web-based applications (i.e. google.com, myspace.com, hotmail.com, ebay.com, etc.) Students will use open-source tools to integrate their computer applications with a database server for dynamic content updates. This class takes you to the next step in your understanding of today's web-based applications industry driven by the Cloud. Students will also be introduced to Linux server operating systems using a raspberry pi. This class supports Programming and Software Development Pathway. *Prerequisite: Programming Fundamentals*

**AP Computer Science Principles** **2 cr**  
**TFHS – C** **10/11/12**

The AP Computer Science Principles introduces students to the foundational concepts of computer science and explores the impact computing and technology have on our society. With a unique focus on creative problem solving and real-world applications, the AP Computer Science Principles course gives students the opportunity to explore several important topics of computing using their own ideas and creativity, use the power of computing to create artifacts of personal value, and develop an interest in computer science that will foster further endeavors in the field.

**IT Help Desk I** **2 cr**  
**TFHS – E – Skill Stack** **10/11/12**

This course provides help desk and support personnel. Students will receive credit for providing IT support to the faculty and staff. Training, funding and equipment will be provided by the Information Technology Department at Twin Falls High School. This class supports The Computer Support and Networking Pathways. *Prerequisite: Instructor Permission*

**IT Help Desk II** **2 cr**  
**TFHS – E – Skill Stack** **11/12**

This course provides help desk and support personnel. Students will receive credit for providing IT support to the faculty and staff. Training, funding and equipment will be provided by the Information Technology Department at Twin Falls High School. This class supports The Computer Support and Networking Pathways. *Prerequisite: Instructor Permission*

**IT Help Desk III** **2 cr**  
**TFHS – E – Skill Stack** **12**

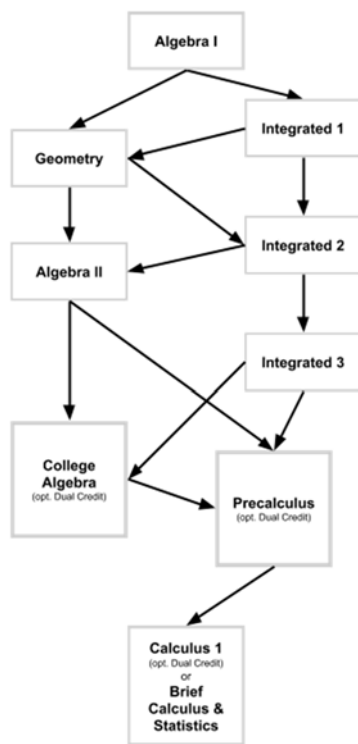
This course provides help desk and support personnel. Students will receive credit for providing IT support to the faculty and staff. Training, funding and equipment will be provided by the Information Technology Department at Twin Falls High School. This class is the capstone for all pathways supported by Information Technology offered in the TFSD. *Prerequisite: Instructor Permission*

## MATHEMATICS

### TFSD High School Mathematics Prerequisite Flowchart

Students must successfully complete one level of a sequence before moving to the next level.

All placements are ultimately based on teacher recommendations.



**Algebra I** **2 cr**  
**CRHS/TFHS – M – NCAA** **9/10/11/12**

Algebra I focuses on expressions, equations, functions, and rational numbers. Solving, graphing, and analyzing linear equations and inequalities, operations with polynomials, factoring, quadratic equations, radical expressions, and the quadratic formula are studied. Fundamental statistics with a linear focus is also included. *Prerequisite: Pre-Algebra*

**Integrated Math I** **2 cr**  
**CRHS/TFHS – M** **9/10/11/12**

Students will deepen and extend understanding of linear relationships by applying linear models to data that exhibit trends and use properties and theorems involving congruent figures to extend geometric knowledge. Students will integrate

algebraic and geometric concepts studies. *Prerequisite: Algebra I*

**Geometry** **2 cr**  
**CRHS/TFHS – M – NCAA** **9/10/11/12**

Geometry is the application of algebraic concepts in terms of geometric figures. Material includes extensive study of the triangle, parallel lines, formal proofs, the Pythagorean Theorem, quadrilaterals and other polygons, circles, two and three dimensional relationships, introduction to trigonometry, proportions, area, volume, and applications of mathematical formulas. *Prerequisites: C or higher in Algebra I & Recommendation*

**Informal Geometry** **2 cr**  
**CRHS/TFHS – M** **10/11/12**

This course is designed for the student who passed both semesters of Algebra I but found Algebra I challenging. The emphasis will be on understanding basic geometric concepts without the use of formal proofs. Algebra I skills are reinforced and applied to geometric situations. The sequential course for Informal Geometry will be Algebra Topics. *Prerequisites: Algebra I & Recommendation*

**Integrated Math 2** **2 cr**  
**CRHS/TFHS – M – NCAA** **10/11/12**

Students will study similarity to understand right triangle trigonometry and connections to quadratics through Pythagorean relationships, and explore circles with their quadratic algebraic representations. Students will study quadratic expressions, equations and functions, comparing their characteristics to linear and exponential relationships, explore the use of real and complex numbers to solve quadratic equations, and the link between probability and data. Students will integrate algebraic and geometric concepts studied. *Prerequisites: Integrated Math I or Algebra and Geometry*

**Algebra II** **2 cr**  
**CRHS/TFHS – M – NCAA** **9/10/11/12**

This advanced mathematics course deals with algebraic expressions, functions and their graphs, inequalities, linear and quadratic equations and functions, polynomials and factoring, exponents, basic trigonometry, logarithms, theory of polynomial equations, real and complex numbers, and elementary statistics and probability. *Prerequisites: C or higher in Geometry & Recommendation*

**Algebra Topics** **2 cr**  
**CRHS/TFHS – M** **10/11/12**

The purpose of this course is to reinforce Algebra skills and to better prepare students to be successful in Algebra II. Upon successful completion of this course, a student may elect to register for Algebra II. *Prerequisites: Geometry/Informal Geometry & Recommendation*

**College Algebra** **2 cr**

**CRHS/TFHS – M – DC (CSI: MATH 143) – NCAA 11/12**

This course includes fundamental concepts of Algebra; equations and inequalities; functions and graphs; polynomial, rational, exponential and logarithmic functions; systems of equations and inequalities; conics; the Binomial Theorem. *Prerequisites: Algebra II & Recommendation*

**Trigonometry 1 cr****CRHS – M – DC (CSI: MATH 144) 11/12**

This course covers right triangle and circular function approaches to trigonometry, graphs of trig functions, trig identities, conditional equations, right and non-right triangle applications of trigonometry, inverse trig functions, and trigonometry of complex numbers including de Moivre's theorem, polar coordinates and equations, parametric equations. *Prerequisites: College Algebra & Recommendation.*

**Precalculus 10/11/12****CRHS/TFHS – M – DC (CSI: MATH 147) – NCAA 10/11/12**

This course covers the study of functions (linear, polynomial, rational, exponential, and logarithmic), conic sections and sequences/series. Right triangle and circular approaches to trigonometry are studied in depth. This course is required for students intending to take Calculus. This course is equivalent to taking both College Algebra (Math 143) and Trigonometry (Math 144). *Prerequisites: C or higher in Algebra II & Recommendation*

**AP Calculus I 2 cr****TFHS – M – DC (CSI: MATH 170) – NCAA 11/12**

The first course in the calculus sequence. It covers algebraic and transcendental functions; rate of change; limits; continuity; differentiation of algebraic, trigonometric, exponential, logarithmic and hyperbolic functions; differentials, applications of differentiation, definite and indefinite integrals, area between curves, volumes and other applications of integration. Alternatively, students may opt to take the AP exam for Calculus to earn possible college credits (based on score). *Prerequisite: C or higher in Precalculus*

**Calculus I 2 cr****CRHS – M – DC (CSI: MATH 170) – NCAA 11/12**

The first course in the calculus sequence. It covers algebraic and transcendental functions; rate of change; limits; continuity; differentiation of algebraic, trigonometric, exponential, logarithmic and hyperbolic functions; differentials, applications of differentiation, definite and indefinite integrals, area between curves, volumes and other applications of integration. *Prerequisite: C or higher in Precalculus*

**Brief Calculus 1 cr****CRHS/TFHS – M – NCAA 12**

A review of functions and their graphs, rates of change, a thorough study of limits, continuity, maxima and minima of functions, and differentiation rules and applications will be studied in this course which is intended for the student who would like an introduction to both Calculus I and Statistics. One

(1) math credit can be earned from this semester course.

*Prerequisites: Precalculus previous year & Recommendation*

**Statistics and Probability 1 cr****CRHS/TFHS – M – CRHS only DC (CSI: Math 153) - NCAA 12**

This advanced course deals with collecting, organizing, analyzing and interpreting numerical information. Students will use and apply statistical methods that are relevant to today's world in business, science, medicine and everyday life. An intensive study of probability is included. *Prerequisites: College Algebra or Precalculus & Recommendation*

## PERFORMING AND VISUAL ARTS

### Art

**Digital Art and Design I 1 cr****TFHS – HUM 9/10/11**

This course is offered to students who are interested in the field of Digital Art. Emphasis will be placed on effective use of the element and principles of design as well as the ethics faced using digital media. Students will develop an understanding of how to create the appropriate file structures for print and digital distribution. Students will get hands on experience using various forms of software used to assist in the creation of digital artwork such as Illustrator, Photoshop and InDesign. Students will get experience creating vector logos, photo corrections, and photo manipulations.

**Digital Art and Design II 2 cr****TFHS – HUM 10/11/12**

A course designed to build upon the students' knowledge from Digital Art I. Emphasis will still be placed on effective use of the element and principles of design as well as the ethics faced using digital media. Students will continue to develop an understanding of how to create the appropriate file structures for print and digital distribution. Students will get hands on experience using various forms of software used to assist in the creation of digital artwork such as Illustrator, Photoshop, Premier, and After Effects. Students will get experience creating vector logos, photo corrections, and photo manipulations as well as experience with Video / Sound Editing and basic video animation. Full Year enrollment required. *Prerequisites: Digital Art & Design I & Instructor Permission*

**Digital Art and Design III 2 cr****TFHS – HUM 11/12**

A course designed to build upon the students' knowledge from Digital Art II. Emphasis continued be placed on effective use of the element and principles of design as well as the ethics faced using digital media. Students will gain an understanding of how digital art effects everyday life. Greater emphasis will be placed on video editing, special effects and various forms of animation. Students will get experience creating their own scripted projects, market them and create portfolio pieces. Full Year enrollment required. *Prerequisites: Digital Art & Design II & Instructor Permission*

**Digital Art and Design IV 2 cr****TFHS – HUM 11/12**

A course designed to build upon the students' knowledge from Digital Art III. Emphasis continued be placed on effective use of the element and principles of design as well as the ethics faced using digital media. Students will gain an understanding of how digital art effects everyday life. Greater emphasis will be placed on video editing, special effects and various forms of animation. Students will get experience creating their own scripted projects, market them and create portfolio pieces, as well as working with client-based projects and development of functional portfolio. Full Year enrollment required.  
*Prerequisites: Digital Art & Design III & Instructor Permission*

**Drawing and Painting I** 1 cr  
**CRHS/TFHS – HUM** 9/10/11

Drawing and Painting is a semester course designed to introduce students to the basic tools and techniques that will ignite their creativity and build a foundation for future artistic discovery. A variety of drawings and paintings will be completed using various drawing and painting mediums. The basic elements of art, design and color theory will be emphasized, while developing the skills of creative expression.

**Drawing and Painting II** 2 cr  
**CRHS/TFHS – HUM** 10/11/12

Drawing and painting II is a rigorous year long course created for students committed to creating an in-depth professional quality portfolio of 20 pieces or more, creating designing and managing a student showcase, as well as participating in public art. In your finished portfolio mastery of drawing and painting will be demonstrated through a wide range of approaches and media, Light and shade, line quality rendering of form, composition, surface manipulation and the illusion of depth. Advanced projects will be completed using various drawing and painting mediums. Full Year enrollment required. *Prerequisites: C or higher in Drawing & Painting I & Instructor Approval*

**Studio Art III** 2 cr  
**CRHS/TFHS – HUM** 11/12

Studio Art III is a year-long course for committed artists that are excited about a career in the arts, and desire to create a college ready or professional portfolio containing a minimum of 20 pieces. This class follows the completion of Drawing and Painting II, and allows more freedom but requires greater expectations in quality, concentration, and breadth of work. This course will encourage personal artistic direction while demanding a focus on advanced techniques and processes. Students will also create and design a student showcase. *Prerequisite: Instructor Approval*

**Studio Art IV** 2 cr  
**CRHS/TFHS – HUM** 12

Studio Art IV is a year-long student driven course for students who are planning on continuing in the arts throughout their college and post education careers. This class follows the completion of Studio Art III Emphasis will be placed on mastering their understanding of drawing and painting techniques in order to develop a robust portfolio as well as to be better prepared for college level art courses. Students will be required to enter juried shows and contests as well as to have a student showcase or online portfolio. *Prerequisite: Instructor Approval*

**Pottery I** 2 cr  
**CRHS/TFHS – HUM** 9/10/11

Pottery I is a course in which students will be introduced to clay and three-dimensional art forms. Basic hand construction, methods of pinching, coiling and slab will be taught and utilized in sculptural form. Decorating and glazing methods will be explored. Experience Clay and Beginning Sculpture textbooks will be utilized.

**Pottery II** 2 cr  
**CRHS/TFHS – HUM** 10/11/12

Pottery II is an extension of the pottery I course with emphasis placed on individual interpretations and creative outcomes drawn from an assignment list. Three dimensional projects will include sculpture as well as a variety of traditional shapes and functional forms in a variety of mediums. Wheel throwing will be introduced. Full year enrollment required. *Prerequisites: C or higher in Pottery I & Instructor Approval*

**Pottery III** 2 cr  
**CRHS/TFHS – HUM** 11/12

Pottery III is a further extension of the Pottery II course in which students create and complete an intense assignment list. Experimentation will be encouraged, as will works of depth and complexity. Students may explore an area of concentration or attempt a variety of self-generated projects. Full year enrollment required. *Prerequisite: Instructor Approval*

**Pottery IV** 2 cr  
**CRHS/TFHS – HUM** 12

Pottery IV is an advanced study in ceramics methods, practices, concepts and history with directed guidance toward producing independent, professional work. The development of methods for realizing self-directed practices, and the commitment to rigorous work practice are expected. Students will be challenged to define their own formal aesthetic and individual goals with the support and input of fellow students and the instructor with the intention of developing new techniques and to reinforce current skills. Full Year enrollment required. *Prerequisite: Instructor Approval*

## Music

**Concert Choir** 2 cr  
**CRHS/TFHS – HUM** 9/10/11/12

Concert Choir is a performing group. It includes the study and performance of musical literature from renaissance through contemporary. The choir has four music department concerts. Performances function as major class examinations. Members of the Concert Choir have the opportunity to participate in District 4 Honor Clinic and to audition for All-State and All-Northwest choirs. Attendance at performances is required. Boys and girls 9th – 12th grade may enroll in Concert Choir. This class will help satisfy the academic humanities graduation requirement. *Prerequisite: CRHS requires audition*

**Women's Chorus** 2 cr  
**CRHS/TFHS – HUM** 9/10/11/12

Women's Chorus (Dolce Serenada/Bella Voce) is a performing group. It includes the study and performance of musical literature from renaissance through contemporary. The

Women's Chorus has four music department concerts. Performances function as major class examinations. Members of Women's Chorus have the opportunity to participate in District 4 Honor Clinic and to audition for All-State and All-Northwest Choirs. Attendance at performances is required and membership is open to freshman, sophomore, junior and senior girls. This class will help satisfy the academic humanities graduation requirement. *Prerequisite: CRHS requires audition*

**Advanced Choir** **2 cr**  
**CRHS/TFHS – HUM** **9 (CRHS only)/10/11/12**

Chamber Singers/Divina Voce is a select SATB choir that studies and performs musical literature from renaissance through contemporary. This group participates in four music department concerts. Performances function as major class examinations. Members have the opportunity to participate in District 4 Honor Clinic and to audition for All-State and All-Northwest Choirs. Attendance at performance is required and membership is by audition only. In addition to the four music department concerts, Advanced Choir often performs throughout the community. Membership is open to boys & girls 10-12. This class will help satisfy the academic humanities graduation requirement. *Prerequisite: Teacher Permission/Audition*

**Jive** **2 cr**  
**TFHS – E** **10/11/12**

TFHS Jive is a show choir of 20-30 singers that performs Musical Theater, Pop, Jazz, and other modern styles. Solo opportunities are a big part of Jive. Auditions will take place the week immediately following Jive Night in April for the following school year. Outside rehearsals will involve one night a week throughout the year for staging and choreography practice. In addition to performing at the four school choir concerts, Jive presents a Winter Showcase in late January and Jive Night in April. During the week of these shows evening rehearsals take place each night. Members of Jive have the opportunity to participate in District 4 Honor Clinic and to audition for All-State and All-Northwest Choirs. A fee of \$150 is required, but all attire, outfits, music, etc. are included. *Prerequisite: Teacher Permission/Audition*

**Synergy** **2 cr**  
**CRHS – E** **10/11/12**

CRHS Synergy is a Show Choir that performs Musical Theater, Pop, Jazz, and other modern styles. Solo opportunities are a part of Synergy, too. Several outside (mostly early AM, and a few Saturday AM) rehearsals will be scheduled and are mandatory. In addition to performing at the school choir concerts, Synergy presents a Winter Showcase and Synergy Night in April. Members of Synergy have the opportunity to participate in District 4 Honor Clinic and to audition for All-State and All-Northwest Choirs. A fee is required for music and outfits. *Prerequisite: Teacher Permission/Audition*

**Orchestra** **2 cr**  
**CRHS/TFHS – HUM** **9/10/11/12**

Orchestra is a performing group that consists of orchestral strings: violin, viola, cello, and string bass. Music of many historical periods and styles will be studied, discussed and performed. The historical/cultural context of music performed will be discussed and critical thinking/evaluation skills

concerning music will be developed. Performances function as major class examinations and concert attendance is required. The Orchestra performs five concerts per school year. Members of the Orchestra have the opportunity to audition for All State and All-Northwest orchestras, as well as District and State Solo Festival/Contest. This class will help satisfy the academic humanities graduation requirement. *Prerequisites: Teacher Permission & Intermediate Orchestra*

**Symphony Band/Concert Band** **2 cr**  
**CRHS/TFHS – HUM** **10/11/12**

Symphony/Concert Band is a performing group that consists of student musicians who enjoy playing wind and percussion instruments. Music of all styles and periods is rehearsed and performed by this group. Performances function as major class examinations and concert attendance is required. Many performances take place in the evening. Members function not only as a concert band, but also as the Marching Band and the Pep Band. Selected members make up the Jazz Band. Members of the Band have the opportunity to audition for All-State and All-Northwest Bands, participate in District Honor Band, and perform in Solo/Ensemble Festival and State Solo Contest. This class will help satisfy the academic humanities graduation requirement. *Prerequisite: Teacher Permission/Advanced or Intermediate Band*

**Wind Ensemble** **2 cr**  
**TFHS – HUM** **9/10/11/12**

Wind Ensemble is an auditioned performing group that consists of 30-50 student musicians who enjoy playing wind and percussion instruments. Music of all styles and periods is rehearsed and performed by this group. Performances function as major class examinations and concert attendance is required. Many performances take place in the evening. Members function not only as a concert band, but also as the Marching Band and the Pep Band. Selected members make up the Jazz Band. Members of the Band have the opportunity to audition for All-State and All-Northwest Bands, participate in District Honor Band, and perform in Solo/Ensemble Festival and State Solo Contest. This class will help satisfy the academic humanities graduation requirement. *Prerequisite: Teacher Permission/Audition*

## Theatre

**Theatre I** **2 cr**  
**CRHS/TFHS – HUM** **9/10/11/12**

Theatre I will introduce students to the creative world of theatre and performance. Throughout the semester students will gain experience in improvisation, directing, playwriting, design, and choreography. Students may also audition for the competitive drama team in the Fall. Theatre I students serve as backstage crew and staff for the annual fundraiser, *Dessert Theater*, and will be required to spend one week of evening rehearsals & performances. Students will be required to attend two live theatre productions per semester and evaluate them in writing. Theatre I students will wrap up the year with the *Intro Show*, a public performance of original scenes and projects.

**Theatre II** **2 cr**  
**CRHS/TFHS – HUM** **10/11/12**

Theatre II is a continuation of the study of theatre and the application of the skills learned in Theatre I. Students audition for placement on the competitive drama team and compete in the district and state competitions held in the Fall. Theatre II actors then perform in Dessert Theater and produce a show in the spring for the general public. Students also serve as build and stage crews for the two other main stage shows. All Theatre II students will be required to spend the necessary hours outside of the school day for evening rehearsals and performances for each show. Students will be required to attend two live theatre productions per semester and evaluate them in writing. *Prerequisites: C or higher in Theatre I & Audition*

**Theatre III** **2 cr**  
**CRHS/TFHS – HUM** **11/12**

Theatre III is the main stage performance class. Theatre III students audition for placement on the competitive drama team and compete in the district and state competitions held in the Fall. Students will perform in Dessert Theater and audition for individual roles for the two main stage productions. Advanced students will be required to spend MANY hours outside of the school day for build, load-in and evening rehearsals and performances for each show. Students will be required to attend two live theatre productions per semester and evaluate them in writing. *Prerequisites: B or higher in Theatre II & Audition*

**Studio-5 Films** **2 cr**  
**TFHS – HUM** **10/11/12**

STUDIO-5 Films: From Concept to Screen is a pilot class for students to engage in the art of filmmaking and to experience the work and detail that is necessary in creating award winning short films. This class is designed with a variety of activities appropriate for different interests, learning styles, and intellectual abilities. Students will principally be engaged in preparing short films to be entered in Idaho’s Kiwanis Teen Film Festival for scholarships and recognition. Students will select a competition film category, create scripts, storyboards, pre-production documents and fill crew assignments. Student will ultimately cast, film and edit their short films before the April submission deadline.

**Production and Design I/II/III** **2 cr**  
**CRHS – HUM** **10/11/12**

Production & Design I/II/III students have a unique opportunity to design, build, and offer technical support for all stage productions of the drama department. Students accepted into Production & Design will spend MANY REQUIRED HOURS outside of the school day designing, advertising, constructing, and operating the shows. Students audition for district and state drama competition in the areas of makeup, scene/lighting design, costume design, and property design/construction. P&D students may also hire on as theatre staff for the school’s auditorium for district and community events. Students will be required to attend two live theatre productions per semester and evaluate them in writing. *Prerequisites: C or higher in Theatre I or II & Instructor Approval*

## PHYSICAL EDUCATION

**Beginning Body Development** **2 cr**  
**CRHS/TFHS – PE** **9/10**

This class is designed specifically for 9th and 10th graders who are participating in interscholastic athletics. This course is a prerequisite to get into Varsity Body Development. Beginning Body Development is designed to introduce and apply the theory, skill, and techniques of weight training. Strength, conditioning, endurance, flexibility, speed, power, and agility will be tracked, recorded, and graded. [Sports considered: Swimming, Football, Basketball, Baseball, Softball, Track, Cross Country, Wrestling, Volleyball, Tennis, Golf, and Soccer] *Prerequisite: Instructor/Coach Signature*

**Cardio Fitness and Strength Training** **1 cr**  
**CRHS/TFHS – PE** **10/11/12**

This class guarantees enhanced quality of life! Workouts are designed to improve body composition, flexibility, muscular strength and endurance, and cardiovascular endurance. Daily requirements include proper attire, intense participation, and achieving personal goals.

**Lifetime Sports** **1 cr**  
**CRHS/TFHS – PE** **10/11/12**

This course is a co-ed course that encourages an appreciation for a lifetime of participation in physical activity and fitness. Students will be provided with the opportunity to pursue and develop an interest and skill in one or more activities in which they can participate throughout life. This course will cover team and individual sports.

**Spinning** **1 cr**  
**CRHS/TFHS – PE** **10/11/12**

This course is an introduction to spinning also known as Indoor Group Cycling. Spinning is a full-body, low impact, aerobic exercise that can help strengthen the heart, lower blood pressure, boost energy, burn fat, tone legs and stomach, reduce stress and tension, and improve overall fitness.

**Sports Credit** **1 cr**  
**CRHS/TFHS – PE** **9/10/11/12**

Students participating in an IHSAA sponsored activity that requires a physical can receive credit upon parental approval. The credit will fulfill a PE requirement or elective requirement if the student already has the two PE credits needed for graduation. The participant will receive a PASS/FAIL grade. If the student does not complete the season they will receive a failing grade. This grade will become part of their permanent record. To earn a passing grade a student must participate in 90% of practices, games, etc. and complete the season on good standing. In order to enroll in the class, the participant must return the signed consent form to their coach within seven (7) days after the beginning of that sports season. If you have any questions, contact your activities director. The following



paragraph is from the Idaho Administrative Code regarding P.E. credit for sports participation.

IDAPA 08.02.03.105.01.i – Students participating in one (1) season in any sport recognized by the Idaho High School Activities Association or club sport recognized by the local school district, or eighteen (18) weeks of a sport recognized by the local school district may choose to substitute participation up to one (1) credit of physical education. Students must show mastery of the content standards for Physical Education in a format provided by the school district.

The Twin Falls School District will consider the following IHSAA sponsored sports eligible for a P.E. credit for participation: Baseball, Basketball, Cross Country, Football, Golf, Marching Band, Soccer, Softball, Swimming, Tennis, Track, Volleyball, and Wrestling.

**Varsity Body Development** **2 cr**  
**CRHS/TFHS– PE** **11/12**

This course is recommended for the interscholastic athlete who has completed Beginning Body Development with a “B” or higher. This course is designed to enhance/master skills in Olympic style weight lifting. Strength, conditioning, endurance, flexibility, speed, power, and agility will be tracked, recorded, and graded. *Prerequisites: B or higher in Beginning Body Development & Instructor/Coach Signature*

## SCIENCE

**Earth Science** **2 cr**  
**CRHS/TFHS – SCI – NCAA** **9**

This course is an introduction to the study of geology, mineralogy, astronomy, meteorology, hydrology, and the earth’s natural resources. Students will be given opportunities to develop as scientists through experimental design and higher order thinking.

**Honors Earth Science** **2 cr**  
**CRHS/TFHS – SCI – NCAA** **9**

*Application/Teacher Recommendation*

Earth Science encompasses the fields of astronomy, geology, meteorology, oceanography, and environmental science. This course is more extensive than the regular Earth Science. More topics will be covered which involve higher level thinking skills and there will investigations into new technologies for studying space and for management of earth’s resources. This course requires an application in the spring prior to registration.

**Biology** **2 cr**  
**CRHS/TFHS – SCI – DC (CSI: BIOL 100) – NCAA** **10**

Biology is the study of living things and processes that maintain the living condition. The topics include cellular biology, photosynthesis, respiration, genetics, evolution, classifying organisms, and ecology.

**Honors Biology** **2 cr**

**CRHS – SCI – DC (CSI: BIOL 201) – NCAA** **10/11/12**  
*Application/Teacher Recommendation*

Honors Biology is designed to provide a more challenging course for students interested in Biology. Students will go in depth into the topics of Cellular Biology, Photosynthesis, Respiration, Genetics, Evolution, Classification and Ecology. This is a dual credit course and students will register for BIOL 201 from CSI. Additionally, this course will prepare students for the AP Biology Exam and students may opt to take the AP Exam for possible college credit.

**AP Biology** **2 cr**  
**TFHS – SCI – DC (CSI: BIOL 201) – NCAA** **10/11/12**

*Application/Teacher Recommendation*

AP Biology is designed to provide a more challenging course for students interested in Biology. Students will go in depth into the topics of Cellular Biology, Photosynthesis, Respiration, Genetics, Evolution, Classification and Ecology. Additionally, this course will prepare students for the AP Biology Exam and students may opt to take the AP Exam for possible college credit.

**Human Structure and Function** **2 cr**  
**CRHS/TFHS – SCI – DC (CSI: BIOL 105) – NCAA** **10/11/12**

*B or better in Biology or Instructor Approval*

This course studies both the structure and function of organ systems of the human body, (circulatory, muscular, nervous, etc.), Laboratory dissections and experiments are used to illustrate the structure and functions of the various systems.

**Physical Science** **2 cr**  
**TFHS – SCI – NCAA** **11/12**

Physical Science is designed to give the non-science student an introduction to the basic principles of chemistry, Physics and Earth Science. Topics may include scientific method, structure of atoms and molecules, composition of matter, motion, forces, energy, heat, waves, electricity, magnetism and light.

**Physics** **2 cr**  
**CRHS/TFHS – SCI – NCAA** **11/12**

*Previous or concurrent enrollment in Algebra II*

The principles of physics are part of all that we do: seeing, hearing, talking, athletics, music, cars, TV, etc. Topics covered include motion, forces, gravity, momentum, energy, electricity, magnetism, sound and light.

**Astrophysics (Astronomy)** **2 cr**  
**TFHS – SCI – DC (CSI: PHYS 101) – NCAA** **11/12**

*C or better in Algebra I*

Astronomy is the study of the universe above the Earth’s atmosphere. This course will cover planets, stars, galaxies, black holes, the Big Bang Theory and more. Some nighttime observation will be required.

**AP Physics 1: Algebra-Based** **2 cr**  
**TFHS – SCI – NCAA** **11/12**

*Previous or concurrent enrollment in Precalculus*

This is equivalent to a first-semester college course in algebra-based physics. The course covers Newtonian mechanics (including rotational dynamics and angular momentum); work, energy, and power; and mechanical waves and sound. It will also introduce electric circuits. Students passing the AP Exam in the Spring may be awarded College Credit.

**Biology II** **2 cr**  
CRHS/TFHS – SCI –DC (CSI: BIOL 100) NCAA 11/12

*Biology*

Students will study many different types of living organisms; their systems and classifications. Students will analyze the structure, function and diversity of organisms. Topics by quarter include: microorganisms (bacteria, protists), botany, zoology, human body systems. This course will include several animal dissections which are a required part of the course. Students must be willing to participate.

**Environmental Science** **2 cr**  
CRHS – SCI – DC (CSI: BIOL 102) 11/12

Environmental Science provides students with the scientific principles, concepts, and methodologies required to understand the interrelationships of the natural world, to identify and analyze environmental problems both natural and man-made, to evaluate the relative risks associated with these problems, and to examine alternative solutions for resolving and/or preventing them. Environmental science is a multidisciplinary science.

**Chemistry** **2 cr**  
CRHS/TFHS – SCI – NCAA 11/12

*Previous or concurrent enrollment in Algebra Topics*

Chemistry is strongly recommended for those students who are planning to go to college. This course studies the properties of matter. Emphasis is on the metric system, chemical formulas, balancing equations, atomic structure, the mole, kinetics and gas laws. Laboratory experiments are conducted. Math skills are very important to be successful in chemistry.

**AP Chemistry** **2 cr**  
CRHS/TFHS – SCI – NCAA 11/12

*Honors Chemistry & Alg. II or higher or Instructor Approval*

This is a 2nd year Chemistry course. Need to have completed Honors Chemistry and be in Precalculus or higher, or with teacher approval. Topics include structure of matter, bonding and intermolecular forces, chemical reactions, kinetics, thermodynamics and chemical equilibrium. AP Exam is given in the spring for possible college credit.

**Honors Chemistry** **2 cr**  
CRHS/TFHS – SCI – DC (BSU/CSI: CHEM101/101L) – NCAA 10/11/12

*Previous or concurrent enrollment in Algebra II*

Honors Chemistry is a challenging course that will emphasize math calculations and lab experience. Atomic structure, chemical reactions, moles, kinetics, gas laws, pH and Stoichiometry will be covered. Four (4) college credits may be

earned for this course. CSI ALEKS Test required for Dual Credit admission. CSI Prerequisite: Math 108 or placement test score into Math 143. Corequisite: CHEM 101L. BSU Requirement: minimum 3.0 HS GPA.

**AP Environmental Science** **2 cr**  
TFHS – SCI- DC (CSI: BIOL 102) 11/12

*C or better in Biology or AP Biology*

The goal of the Environmental Science course is to provide students with the scientific principles, concepts, and methodologies required to understand the interrelationships of the natural world, to identify and analyze environmental problems both natural and human-made, to evaluate the relative risks associated with these problems, and to examine alternative solutions for resolving and/or preventing them. Students passing the AP Exam in the Spring may be awarded College Credit.

**SOCIAL STUDIES**

**History 9** **1 cr**  
CRHS/TFHS – SS – NCAA 9

9th Grade World Cultures Eastern Hemisphere. This class is designed to enable students to become well acquainted with various parts of the world — with special emphasis on the Eastern Hemisphere (Middle East, South Asia, East Asia and Southeast Asia). Focus will center on physical, historical and cultural geography, as well as Current events, and the 5 Major religions. For CRHS, this course is taken through IDLA in a computer lab.

**Honors History 9** **1 cr**  
TFHS – SS – NCAA 9

Covers same regions of focus as History 9. Added emphasis of primary sources for historical scrutiny and writing, deeper cultural understanding, and a more rigorous analysis of both the physical and political geography of the Eastern Hemisphere.

**U.S. History 10** **2 cr**  
CRHS/TFHS – SS – NCAA 10

United States History 10th is a survey course from the colonization and formation of the United States through Westward expansion of the late 1800s.

**U.S. History 11** **2 cr**  
CRHS/TFHS – SS – NCAA 11

United States History 11th is a survey course from U.S. Imperialism (1890s) to present day.

**Dual Credit U.S. History 11** **2 cr**  
CRHS/TFHS – SS – DC (CSI: HIST 111/112) – NCAA 11

*Application*

This course covers the beginnings of U.S. history to present day. It also has the option of taking concurrent credit through CSI.

**Psychology 101** **1.5 cr**  
CRHS/TFHS – SS – DC (CSI: PSYC 101) – NCAA 12

Psychology is a general survey of psychology principles including significant people, theories and human understanding. This course MUST be taken for Dual Credit.

**Student Leadership** **2 cr**  
 CRHS/TFHS – E 11/12  
*Elected Position*

This allows Student Council members to learn leadership skills, plan, organize advertise, and improve school activities.

**American Government** **2 cr**  
 CRHS/TFHS – SS – NCAA 12

This course provides students with an understanding of the structure, organization, and operation of American government.

**Advanced American Government** **2 cr**  
 CRHS/TFHS – SS – DC (CSI: POLS 101) – NCAA 12

*Application*

This course is an in depth focus on constitutional foundations, politics, three branches of government, civil rights, and civil liberties. At CRHS, this course MUST be taken for Dual Credit. At TFHS, Dual Credit is optional.

## SUPPORT SERVICES

**Consumer Math** **2 cr**  
 CRHS/TFHS – M 9/10/11/12

*Special Ed. Teacher Approval*

A course consisting of real world applications of fundamental and basic math skills including, basic purchases, money management and employment.

**Developmental Reading and Written Language I** **2 cr**  
 CRHS/TFHS – ENG 9/10

*Special Ed. Teacher Approval*

A comprehensive literacy intervention curriculum for 9th and 10th grade students who lack age or grade level mastery in reading, vocabulary, writing and grammar.

**Fundamentals of Algebra** **2 cr**  
 CRHS/TFHS – M 9/10/11/12

*Special Ed. Teacher Approval*

A Remedial course designed as a comprehensive review of the concepts of pre-algebra and basic algebra.

**Life Skills** **2 cr**  
 CRHS/TFHS – E 9/10/11/12

*Special Ed. Teacher Approval*

Life Skills is designed to address functional academics as well as comprehensive living skills. Key Concepts: reading, writing, math, social/communication skills, personal management, safety/health, leisure/recreational and self-advocacy.

**Personal Care Living Skills** **2 cr**  
 CRHS – E 9/10/11/12

*Special Ed Teacher Approval*

Personal Care Living Skills is a program designed to assist the IEP student in learning daily living skills, communication, mobility, social, and independent living skills.

**PTS** **1 cr**  
 CRHS/TFHS – E 9/10/11/12

*Special Ed. Teacher Approval*

Practical Transition Skills involves an integrated approach to functional academics and skill building in organizational/study skills, independent living and career/employment skills.

**Work Experience Release** **2 cr**  
 CRHS – E 10/11/12

*Special Ed Teacher Approval*

Work experience is a work-based program designed to assist the IEP student in bridging the gap between school and work. The student must have a paying job in the community.

**CAP** **2 cr**  
 CRHS – E 11/12

*Special Ed Teacher Approval*

College Adult Preparedness will assist Junior and Senior students in preparing for the transition from high school to college and adult life. It will offer opportunities for college visits, research on career and employment, life skills such as keeping a bank account, creating a budget, etc. as well as self-awareness.

**Developmental Reading and Written Language II** **2 cr**  
 CRHS/TFHS – ENG 11/12

*Special Ed. Teacher Approval*

This course is designed for 11th and 12th grade students who are lacking age or grade level skills in reading, writing, vocabulary, and grammar. Students will receive a comprehensive literacy curriculum with an emphasis on junior/senior research papers.

**Hire Learning** **2 cr**  
 CRHS – E 11/12

*Special Ed Teacher Approval*

Hire Learning is a work-based program designed to assist the IEP student in bridging the gap between school and work. Will provide student with a variety of real job experiences on CRHS/TFHS campus.

## WELDING

**Welding I** **1 cr**  
 TFHS – E 9/10/11

This course is designed to introduce the student to the basic skills required for ARC welding, MIG welding, TIG welding, oxyacetylene welding and cutting and Plasma cutting. This course will provide a wide range of topics related to the welding trade such as terminology as well as application of learned skills and techniques. Prerequisite: 9<sup>th</sup> grade approval only.

**Welding II** **2 cr**  
 TFHS – E 10/11/12

*C or higher in Welding I*

This course is a continuation of Welding 1; designed to expand the student's knowledge, improve learned skills, and encourage creativity. The student will continue to develop necessary skills and techniques using all four welding processes in all four positions flat, horizontal, vertical, and overhead. This course will

provide a wide range of topics related to the welding trade such as terminology, knowledge of the conceptual process of welding as well as application of learned skills and techniques.

**Welding III** **4 cr**  
 TFHS – E 11/12  
*C or higher in Welding II & Application*  
 This course is a continuation of Welding 2. Students design and create projects with welding skills.

## WORLD LANGUAGES

**French I** **2 cr**  
 CRHS/TFHS – HUM – NCAA 9/10/11/12  
*C or higher in English or Instructor Approval*  
 Students will begin to develop skills in all areas of language and culture.

**French II** **2 cr**  
 CRHS/TFHS – HUM – NCAA 10/11/12  
*C or higher in French I or Instructor Approval*  
 Students will continue a more intensive development of the target language and cultural understanding.

**French III** **2 cr**  
 CRHS/TFHS – HUM – NCAA 10/11/12  
*C or higher in French II or Instructor Approval*  
 Students will explore advanced levels of the target language and culture.

**French IV** **2 cr**  
 CRHS/TFHS – HUM – NCAA 11/12  
*C or higher in French III or Instructor Approval*  
 Students will explore advanced levels of the target language and culture.

**Spanish I** **2 cr**  
 CRHS/TFHS – HUM – NCAA 9/10/11/12  
*C or higher in English or Instructor Approval*  
 Students will begin to develop skills in all areas of language and culture.

**Spanish II** **2 cr**  
 CRHS/TFHS – HUM – NCAA 9/10/11/12  
*C or higher in Spanish I or Instructor Approval*  
 Students will continue a more intensive development of the target language and culture.

**Spanish III** **2 cr**  
 TFHS – HUM – NCAA 11/12  
*C or higher in Spanish II or Instructor Approval*  
 Students will explore advanced levels of the target language and cultural understanding.

**Dual Credit Spanish 101** **1 cr**  
 CRHS/TFHS – HUM – DC (CSI: SPAN 101) – NCAA 11/12  
 This class is designed for students learning beginning Spanish at the college level. Speaking, reading, writing and listening are part of the daily work which is completed both in the traditional

classroom setting and online. This class will cover basic material such as numbers, colors, and days of the week along with basic grammar. The class also covers different Cultural aspects and traditions of the Spanish speaking world. This class is recommended for juniors and seniors who are college bound and have not yet taken a foreign language as well as those students wanting to strengthen their Spanish grammar. The class is designed and taught according to CSI's foreign language department standards.

**Dual Credit Spanish 102** **1 cr**  
 CRHS/TFHS – HUM – DC (CSI: SPAN 102) – NCAA 11/12  
 Sp. 102 is a continuation of Sp.101. This class is designed for the student to continue learning Spanish vocabulary and grammar. Reading, writing, speaking and listening will still be emphasized in the traditional method as well as online. Spanish traditions and customs in Spanish speaking countries will continue to be taught. In the 102 level, students will be encouraged to orally communicate more in the classroom setting. This class is designed for those college bound students who wish to learn more Spanish grammar and vocabulary that is an everyday necessity, and for juniors and seniors who need another year of Spanish. The class is designed to be taught according to CSI's foreign language department.

**American Sign Language** **1 cr**  
 CRHS/TFHS – HUM – DC (CSI: SIGL 101) – NCAA 11/12  
*Instructor Approval*  
 This course creates a visual-gestural environment to introduce American Sign Language. The course will be conducted in the target language to provide students with the basic knowledge about ASL and Deaf Culture. The course will implement visual readiness activities to progress the students into employing correct linguistic features while producing commands, asking questions, and making simple statements. Fingerspelling is another component of the course. Appropriate cultural behaviors critical to conversation skills will be put into practice. Emphasis is on receptive skills, expressive skills, and cultural awareness. Videotaping and constructive feedback are necessary components of instruction. Required for majors. Recommend completion of ENGL 090.

**American Sign Language II** **1 cr**  
 CRHS/TFHS – HUM – DC (CSI: SIGL 102/102L) – NCAA 11/12  
*Instructor Approval and SIGL 101 with a "C" or higher.*  
*Corequisite: SIGL 102L*  
 This course builds off the basic skills developed in ASL 1 and focuses on developing accuracy and fluency in receptive and expressive skills. Additional linguistic features will be taught in order to enhance conversational skills. Spontaneous use of the language will expand the students' vocabulary through various discussions on daily life and world events. Supplementary information on Deaf Culture (people, history, and various group dynamics) will be discussed. Video tapings and constructive feedback are necessary components of instruction. Required for majors.