



# Phase 1A

FOR MORE INFORMATION,  
PLEASE CONTACT:

*Cathey Tracey*

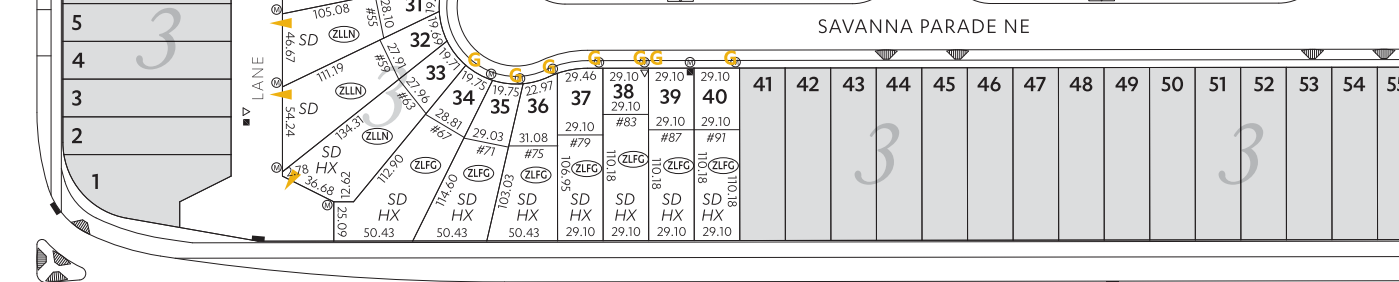
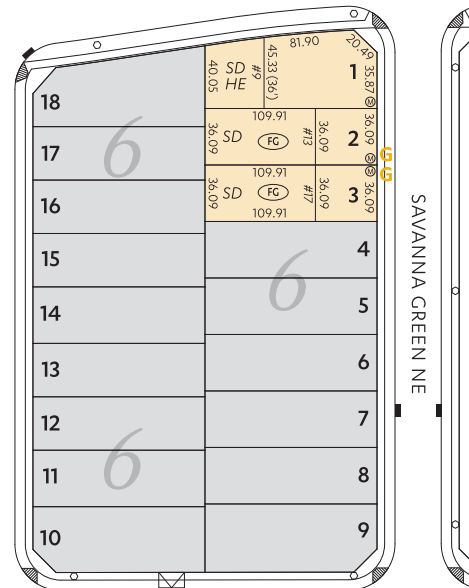
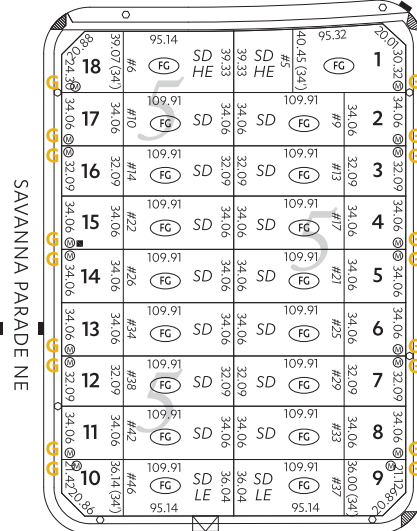
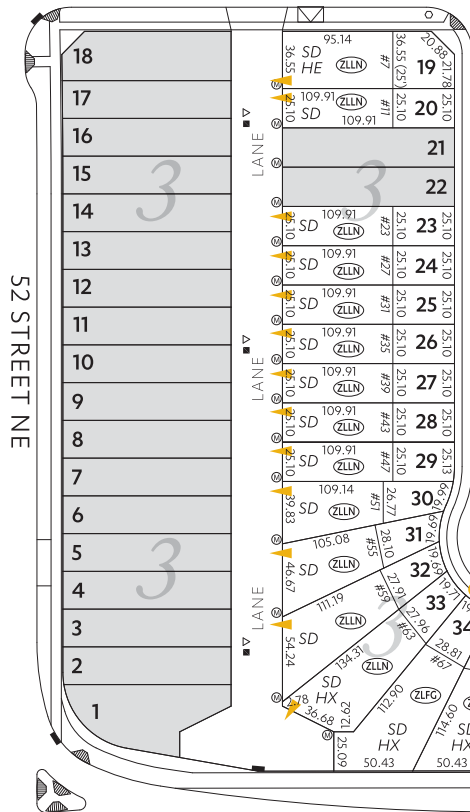
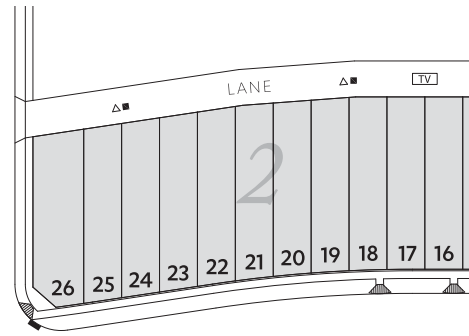
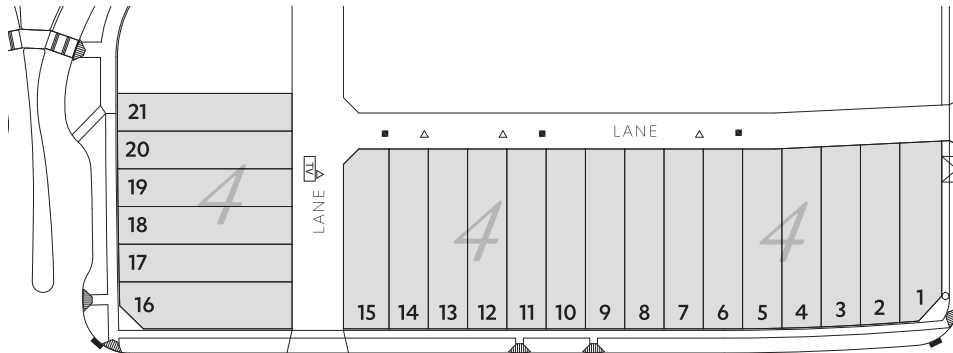
AREA MANAGER

**403-475-1510**

as of August 8, 2018

### LEGEND

- 20** Lot Number
- 12** Block Number
- #92** Municipal Address
- SD** Split Drainage
- TR** Transition
- BF** Back to Front
- HE** High Exposure Corner
- LE** Low Exposure Corner
- HX** High Exposure
- LN** Laned
- FC** Front Garage
- ZLLN** Zero Lot Line Laned
- ZLFC** Zero Lot Line Front Garage
- G** Garage Location
- ▶** Driveway Location
- Transformer
- △** Telus Pedestal
- ◻** Telus Service Vault
- TV** Shaw Cable TV Pullbox
- Ⓜ** Electric Switch Cubicle
- Ⓜ** Electric Pull Box
- Street Light
- ▬** Bus Zone
- ▬** Catch Basin
- ⊕** Fire Hydrant
- ✉** Mailbox
- Ⓜ** Meter Location
- ♿** Wheelchair Ramp



88 AVENUE NE

NOTE: This plan is prepared from a compilation of preliminary information as a convenience to prospective purchasers and may be subject to change without notice. In all cases, the original plans shall be referenced to confirm lot information. Excel Homes LP will not be responsible for any errors or omissions. Please speak with the area manager for more information.