

# INDIGENOUS MONITOR OVERVIEW REPORT

---

**Month: September 2020**

**Indigenous Monitor days on-site: 21**

**Project Region: Yellowhead (Spread 2)**

**Kilometre Posts (KPs) monitored:  
156–337**

## **Indigenous Monitors on the Trans Mountain Expansion Project – Overview**

The Trans Mountain Expansion Project (the Project) has retained Indigenous Monitors as integrated members of its construction Environmental Inspection team. Indigenous Monitors work with Environmental Inspectors to monitor compliance with mitigation measures to minimize impacts to traditional resource use and cultural/heritage impacts during construction. Indigenous Monitors have a strategic role in providing traditional knowledge directly and pragmatically to construction oversight practices and bring an Indigenous lens to daily environmental inspection activities.

This Overview Report provides highlights of the Indigenous Monitors' day-to-day work and key mitigation measures observed by the Monitors related to Project construction in the Yellowhead region. The purpose of this report is to provide an update on Indigenous Monitor activity to Indigenous groups.

During this reporting period, key Project activities in the Yellowhead Region involving Indigenous Monitors were focused around KP 156–337 and included monitoring environmental features, watercourse crossing reclamation activities and erosion and sediment control mitigation. Spread 2 pipeline construction commenced normal inspection activities after the summer of reduced activity.

**For more information: email [info@transmountain.com](mailto:info@transmountain.com) or call 1.866.514.6700.**

## **Trans Mountain COVID-19 – Our Response**

Trans Mountain is actively monitoring the COVID-19 situation with the help of federal, provincial and local agencies. Trans Mountain's top priority remains the health and safety of its workforce, their families and our communities. Trans Mountain and its construction contractors are working diligently together to adhere to all advice and direction from government and health officials, while ensuring the safe uninterrupted operation of the Trans Mountain Pipeline and the continued, safe construction of the Expansion Project. Measures being undertaken at construction sites include: following physical distancing guidelines, staggering work shifts and breaks; eliminating or minimizing in-person meetings; and enhancing cleaning and sanitizing; and ensuring workers orientation includes COVID 19 expectations, awareness and prevention.

**For more information: [transmountain.com/covid19](https://transmountain.com/covid19)**

### Watercourse Crossing Reclamation

Reclamation of watercourse crossings is an important step in returning disturbed sites to a stable condition similar to those recorded prior to construction activity.

The pictures shown top right to bottom show what Bench Creek (at KP 226) looked like during construction and reclamation as observed by an Indigenous Monitor.

Mitigation measures implemented during watercourse crossing reclamation include re-establishing watercourse bed and banks to a stable condition; re-establishing positive drainage across the worksite; preventing surface material loss due to soil erosion by wind and water; and establishing a vegetative cover compatible with surrounding vegetation and land uses, and deterring the proliferation of weeds.

The Indigenous Monitors inspected watercourse crossing reclamation activities, including monitoring of site housekeeping efforts and monitoring grading and soil transfer activity in previously excavated and backfilled areas. During reclamation, Indigenous Monitors inspected the Bench Creek area for erosion control measures like coconut matting, ensuring the banks are stable and the creek is functioning at or near pre-construction levels.



Bench Creek temporary travel way during construction.

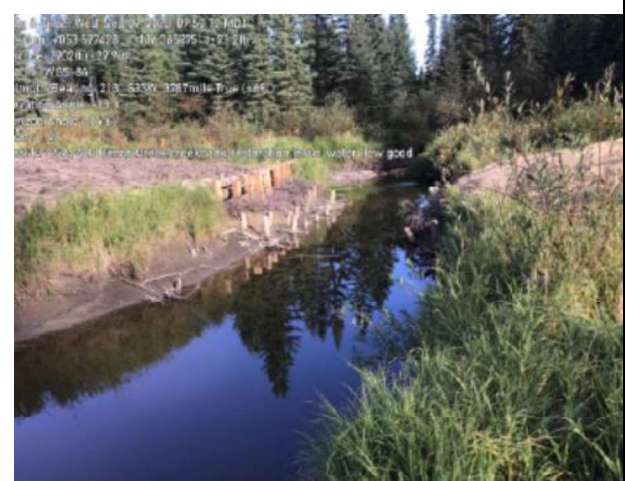


Bench Creek two months after removal of travel way.

### Regulatory Inspections

The Canada Energy Regulator (CER) along with the Indigenous Advisory Monitoring Committee (IAMC) conducted a site inspection within the Yellowhead Region. The inspection included visits to traditional land use sites and areas of watercourse restoration (e.g., Bench Creek).

The Indigenous Monitors participated in the CER/IAMC inspection and were active participants in discussions about the effectiveness of ongoing environmental mitigation and monitoring measures.



Bench Creek bank restoration.

### Environmental Features

Environmental features such as rare plants and rare ecological communities, wildlife species of concern, archeological features, Traditional Land Use (TLU) sites and any other sensitive environmental or cultural features that occur on or adjacent to the construction footprint are staked, flagged and sometimes fenced prior to commencing construction. The features are clearly marked so they can be protected during construction.

The Indigenous Monitors inspected environmentally sensitive areas to ensure the flagging/staking remains in place, the appropriate mitigations are being followed, such as clearly marking all identified areas and buffer zones are the correct distances.



Plant gathering area.

### Indigenous Monitor Request Dashboard

Indigenous Monitors are provided daily on-site field support from Environmental Inspectors and office support from Indigenous Monitor Coordinators. Indigenous Monitors can also make specific support requests or submit questions through their daily report. Examples include but are not limited to: request for Project reports, input from an environmental resource specialist or on-site support from an Elder or other cultural knowledge holder. Monthly requests and their completion status are noted below.

Status	Number and Type of Requests				
	Project Reports/Documents	Environmental Resource Specialists	Elder/Cultural Knowledge Holder	Other	Total
Total	0	0	0	0	0
Fulfilled	-	-	-	-	-
Outstanding	-	-	-	-	-

This report has been reviewed by the active Indigenous Monitor(s)

**CONTACT US:**  
Trans Mountain

✉ info@transmountain.com  
☎ 1.866.514.6700  
🌐 transmountain.com

🐦 @TransMtn    📺 youtube.com/transmtn    🔗

📦 PO Box 81018  
Burnaby, BC V5H 3B0

