

Le présent message contient des renseignements importants. Si vous avez besoin d'une traduction, veuillez communiquer avec info@transmountain.com.



TRANS MOUNTAIN

Construction Update Notice

WESTRDIGE MARINE TERMINAL: Update on Extended Work Hours

We're working in your neighbourhood of Burnaby, BC

March 2023 - August 2023*

As a neighbour of Trans Mountain's Westridge Marine Terminal (WMT), you are receiving this Update Notice to ensure that you are kept informed of construction activity at the Terminal as part of the Trans Mountain Expansion Project. Please visit transmountain.com/map to access the latest Project information and sign up for automatic updates.

Trans Mountain continues in-water and foreshore construction at WMT including pile driving for marine dock structures, electrical and utility work and other activities in preparation for the installation of vessel loading equipment and emergency response enhancements.

APPROVED EXTENDED WORK HOURS – WMT FORESHORE AREA

The Vancouver Fraser Port Authority (the port authority) recently approved a six-month extension to a limited scope of construction activities overnight at the Terminal plus a limited scope of work that will occur on Sundays. This extension permits the continuation of activities at the Terminal previously approved to occur 24 hours per day, Monday to Saturday. Some essential work will also occur on Sundays between 8:00 am and 5:00 pm and a limited number of Sunday nights from 5:00 pm to 7:00 am as described below. The six-month extension is effective March 1, 2023, until August 1, 2023.

All general construction activities related to the Project currently take place during regular construction hours between 7:00 am and 8:00 pm Monday to Saturday as stipulated under the port authority permit PER #19-162. Sunday and night work **will not** include pile driving operations; those activities will continue to occur only during daytime regular construction hours.

All work will adhere to the requirements and conditions originally outlined in port authority permit #19-162. This includes abiding by all noise, lighting and environmental requirements in the Project Permit Application as well as the Westridge Marine Terminal Environmental Protection Plan (CER Filing ID A6G2L1)¹ and Noise Management Plan (CER Filing ID A7I3K1)². All emergency plans and resources would be maintained through these extended work hours.

¹Westridge Environmental Protection Plan, Condition 81 [CER Filing ID A6G2L1]: <https://apps.cer-rec.gc.ca/REGDOCS/ItemView/3581455> (Accessed July 25, 2022)

²Westridge Marine Terminal Nightshift Noise Management Plan Addendum to Condition 80 [CER Filing ID A7I3K1]: <https://apps.cer-rec.gc.ca/REGDOCS/Search?dn=A7I3K1> (Accessed July 25, 2022)

**Dates and times are subject to change and construction work is subject to necessary approvals and permits.*



APPROVED NIGHT SHIFT ACTIVITIES

Foreshore Construction

Now that ground improvement works are complete, construction will continue to take place on the foreshore. The utility installation work will continue for an additional six-month period and include the following activities:

- Excavation of trenches, backfilling and compaction of fill
- Installation of utilities such as conduit, pipe, manholes, and sumps
- Operations to manage spoiled materials
- Concrete works and installation of structural steel
- Pipe fitting and welding
- Installation of electrical cable, devices, instruments, and lighting
- Hydrostatic testing
- Commissioning activities such as equipment energization, instrumentation, and pump testing

Rock Reef Complex Construction

The rock reef complex construction will take place across intertidal and subtidal zones of the WMT water lot lease. Each section of the reef will integrate three habitat types: nursery reefs, integrated reefs and adult reefs. The overall purpose of the reef types is to provide a variety of habitats offering benefits to a wide range of fish and invertebrate species. Construction on this scope will be complete in Spring 2023 and includes the following activities:

- Material delivery via barges
- Underwater placement of crushed bedding rock, rock mattresses, and reef rock; materials will be placed on the seafloor using cranes, a bottom-opening Bombay box, a clam bucket, or an excavator bucket.
- Maintenance and refueling

Efforts will be made to construct the rock reef complex from limited hours between 7:00 am and 10:00 pm Monday to Saturday.

APPROVED SUNDAY SHIFT ACTIVITIES

Hydrostatic Testing

Trans Mountain has identified a need to perform hydrostatic testing within the terminal property on Sunday day shifts due to exclusion zones and impacts on concurrent work activities. Hydrostatic testing will only occur during the Sunday day shift between 8:00 am and 5:00 pm.

Hydrostatic testing is a well-established industry practice used to confirm the ability of the pipeline to operate safely and determine if any repairs are needed. The process includes filling the segment of pipe with water to pre-determined limits of pressure, for an extended period.

During the test, the pipeline will be monitored by personnel with precise instrumentation to detect any signs of a release. If a release is detected, the test will be suspended, and the pipeline repaired. Trans



Mountain's personnel will remain on standby for the duration of the test to enable rapid mobilization and response as outlined in the Reactivation Hydrostatic Test Emergency Preparedness and Response Plan.

Rock Reef Complex Construction

To meet timelines mandated in the Fisheries and Oceans Canada (DFO) Fisheries Act Authorization (FAA) for WMT, Trans Mountain has identified that a Sunday day shift from 8:00 am to 5:00 pm is required. This will allow Trans Mountain to continue efforts to limit nighttime construction of the rock reef complex. These scopes will be limited to:

- Material delivery via barges
- Underwater placement of crushed bedding rock, rock mattresses, and reef rock; materials will be placed on the seafloor using cranes, a bottom-opening Bombay box, a clam bucket, or an excavator bucket.
- Maintenance and refueling

Additional Sunday Activities

Trans Mountain has also identified the need to complete other limited scopes of work on Sunday day shifts and for a limited number of Sunday night shifts from 5:00 pm to 7:00 am to meet the construction schedule. The Sunday night shifts may be needed between mid-April and early June. These scopes are limited to:

- Pipe fitting and welding
- Installation of electrical cable, devices, instruments, and lighting
- Commissioning activities such as equipment energization, instrumentation, and pump testing

PROPOSED MITIGATIONS TO MINIMIZE DISTURBANCE

Trans Mountain and its acoustic consultants have completed an assessment of the potential noise sources related to the construction activity mentioned above and anticipate that noise levels associated with this construction activity will remain within the nighttime Permissible Sound Levels outlined in the Project permit and the Westridge Noise Management Plan Night Shift Addendum which meet with BC Oil and Gas Commission Guidelines and were approved by the CER.

Trans Mountain continues to implement mitigation measures to minimize potential disturbance from construction activities:

- Where possible limit the use of generators and light plants
- Noise barriers to be deployed close to noisy activities to block effects on residential areas, including north shore areas. This includes the previously installed 12' sound wall at the Terminal to minimize the effects of drilling operations on the residential neighbourhood.
- Use of directional lighting to limit light pollution to the surrounding area (people/birds)
- Shut down of equipment, not in use and minimize vehicle use on site
- Continuous noise monitoring and deployment of noise mitigations as per the noise management plan
- Offsite parking with shuttle transportation to minimize vehicle traffic accessing the site.

Le présent message contient des renseignements importants. Si vous avez besoin d'une traduction, veuillez communiquer avec info@transmountain.com.



TRANSMOUNTAIN

Construction Update Notice

SITE LOCATION

Figure 1: Hydrostatic testing locations for new berths

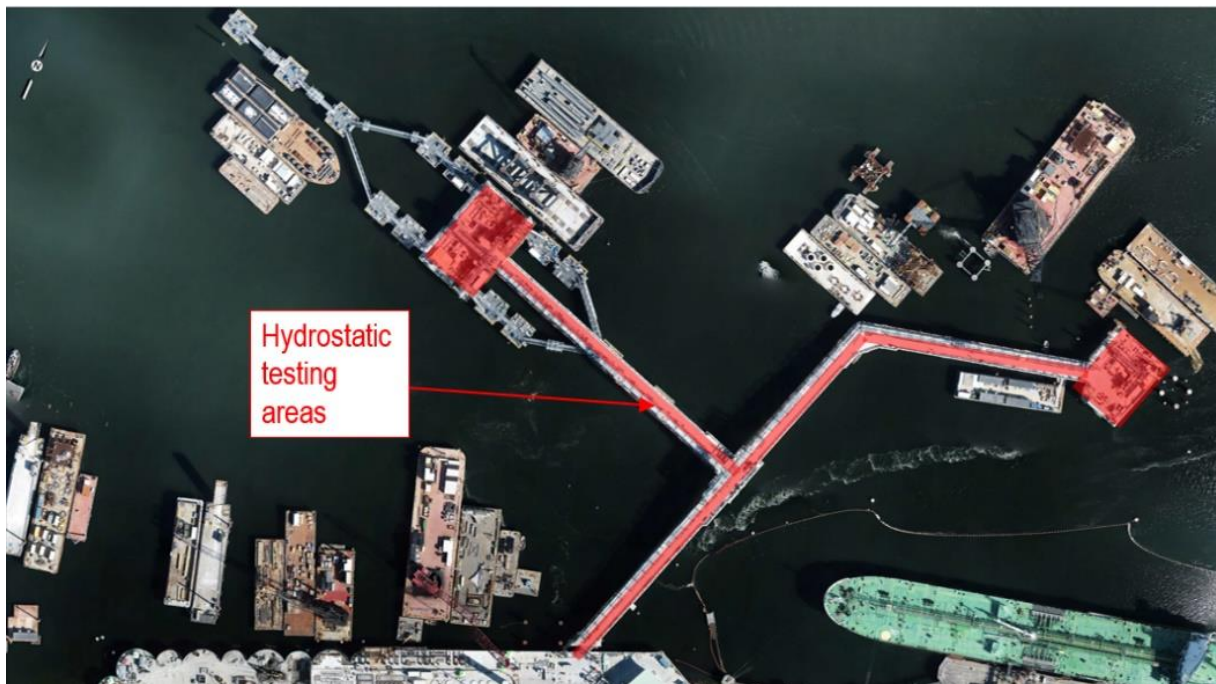
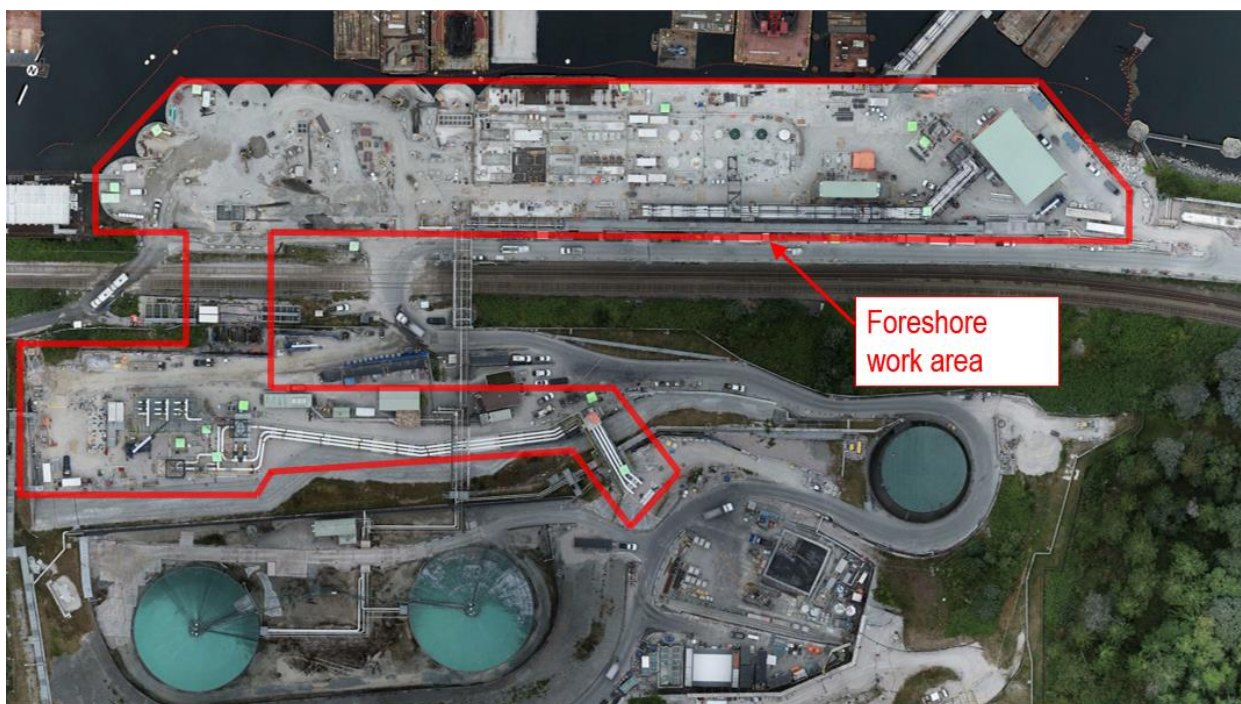


Figure 2: Expanded foreshore work area



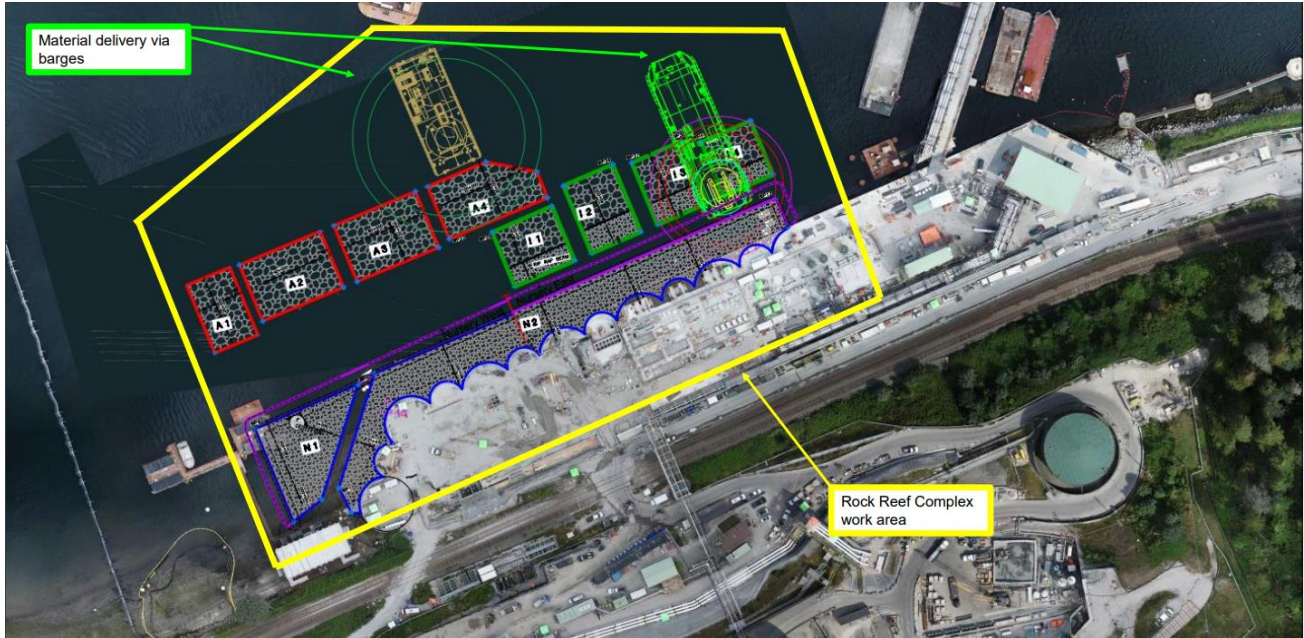
Le présent message contient des renseignements importants. Si vous avez besoin d'une traduction, veuillez communiquer avec info@transmountain.com.



TRANSMOUNTAIN

Construction Update Notice

Figure 3: Rock reef complex construction work area



Should you have concerns regarding this work, please contact is at **1.866.514.6700** or info@transmountain.com

For questions for the port authority's review of these proposed works, please call **604.665.9004** or email community.feedback@portvancouver.com

Visit our Westridge Marine Terminal web page at: transmountain.com/westridge-marine-terminal

CONTACT US:
Trans Mountain

info@transmountain.com

1.866.514.6700

transmountain.com

@TransMtn

youtube.com/transmtn

PO Box 81018
Burnaby, BC V5H 3B0

**Pipeline or construction
emergency?**

Call 24/7: **1.888.876.6711**