

INDIGENOUS MONITOR OVERVIEW REPORT

Month: August 2022

Project Region: Lower Mainland

Indigenous Monitor days on-site: 23

**Kilometre Posts (KPs) monitored:
Spread 7 KP 1165–1176**

Indigenous Monitors on the Trans Mountain Expansion Project – Overview

The Trans Mountain Expansion Project (the Project or TMEP) has retained Indigenous Monitors as integrated members of its construction Environmental Inspection team. Indigenous Monitors work with Environmental Inspectors to monitor compliance with mitigation measures to minimize impacts to traditional resource use and cultural/heritage impacts during construction. Indigenous Monitors have a strategic role in providing traditional knowledge directly and pragmatically to construction oversight practices and bring an Indigenous lens to daily environmental inspection activities.

This Overview Report provides highlights of the Indigenous Monitors' day-to-day work and key mitigation measures observed by the Monitors related to Project construction in the Lower Mainland. The purpose of this report is to provide an update on Indigenous Monitor activity to Indigenous groups.

During this reporting period, key Project activities in the Lower Mainland region involving Indigenous Monitors include construction at Westridge Marine Terminal (WMT), Burnaby Terminal and on Spread 7B. Activities included erosion and sediment control measures, construction housekeeping, wildlife management, watercourse crossings and monitoring at the Colony Farm Regional Park Temporary Workspace.

The Project Construction Progress Report (Condition 106) for August 2022, which reports environmental events and deficiencies in Tables 4 and 5 respectively, is found [here](#).

The Project has a process for sharing information related to potential Traditional Land Use (TLU) and Heritage Resource chance finds during construction. [Protecting TLU and Cultural Heritage Resources Fact Sheet \(link here\)](#) provides an overview of the chance find communication process. Applicable Indigenous groups are notified and engaged directly on potential chance finds.

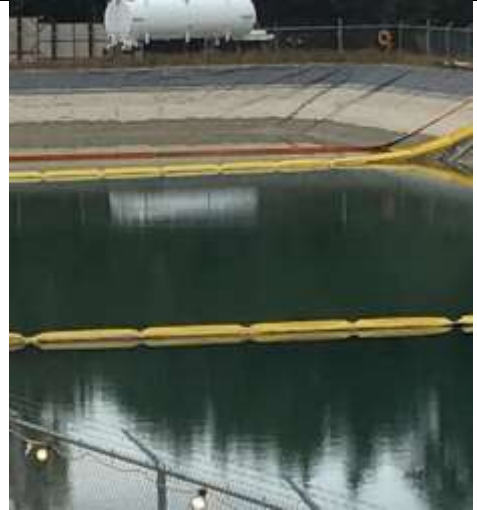
For more information: email info@transmountain.com or call 1.866.514.6700.

Erosion and Sediment Control

Erosion and sediment control (ESC) measures are used to reduce erosion and limit sediment transport across construction sites to sensitive environmental features.

At Burnaby Terminal and WMT, the Indigenous Monitors conducted daily inspections to verify ESC measures throughout the terminals were installed effectively as prescribed in the Environmental Protection Plan. This included inspecting berms and exposed slopes were securely covered with polyethene sheeting and hydroseed was correctly applied. Ditches and other water conveyance measures throughout the terminal and along the perimeter of the Project footprint were also inspected to ensure they were free of construction materials and debris.

The Indigenous Monitor observed the draining of the Intermediate Storm Water Retention Area (ISWRA). After the ISWRA was drained the remaining sediment was screened for amphibians before it was removed and transferred to the terminal's portal waste area. The Indigenous Monitor inspected this wildlife mitigation measure. No amphibians were discovered in the sediment.



Intermediate Storm Water Retention Area (ISWRA) being drained.



Sediment from construction remaining in the ISWRA after the water was drained and the amphibian sweep conducted.

Site Housekeeping

The Indigenous Monitors in the Lower Mainland regularly conduct inspections of construction areas for general housekeeping measures. This includes observing and documenting waste management practices and hazardous materials containment, as well as inspecting that spill kits are effectively placed and stocked with absorbent materials.

The Indigenous Monitor conducted housekeeping inspections at Burnaby Terminal and WMT. Indigenous Monitors also check that secondary containment is placed underneath machinery and stored hydrocarbons such as paint and gasoline. If a deficiency is observed, the contractor is notified by the Environmental Inspector and corrective actions are taken.



Bin used for the disposal of Japanese Knotweed removed at WMT, which is transported to an off-site Trans Mountain-approved facility.

Wildlife Management

While conducting site monitoring, the Indigenous Monitors record and report wildlife sightings to the Environmental Inspector. They also inspect signage and wildlife buffers to ensure they're effectively in place to prevent incidental contact. Indigenous Monitors also routinely observe and participate in wildlife sweeps and salvages for various species of wildlife.

At Burnaby Terminal, the Indigenous Monitor observed an amphibian salvage being conducted by the Resource Specialist in the existing firewater pond prior to the pond being decommissioned. More than 1,000 salamanders and two garter snakes were salvaged and relocated to the terminal's retention pond.



Salamanders salvaged from the existing firewater pond at Burnaby Terminal.

Watercourse Crossings

Mitigation measures required for in-stream construction include but are not limited to biosecurity cleaning of equipment, secondary containment of hydrocarbons, stream bed material, fish salvage, amphibian salvage, water quality monitoring and erosion and sediment control.

In isolated watercourse crossings, stream flow is rerouted around the natural watercourse for a short duration while trenched construction occurs across the watercourse. Once the trench is constructed and the pipe is installed, the trench is backfilled and the channel bed and banks are restored to their pre-existing condition. Watercourse diversion is typically limited to a few hours to a single day for smaller watercourses. During this type of construction, if the watercourse is fish-bearing, fisheries biologists salvage fish from the isolated area and release them downstream. Water quality is also monitored by Resource Specialists during construction in all fish-bearing watercourses.

At Holmes Creek (watercourse BC-783b) near KP 1175, the Indigenous Monitor observed the watercourse diversion isolation measures. Alongside the Environmental Inspector, they inspected the restoration of the creek bed prior to the release of the watercourse diversion, as well as the environmental feature signage. No concerns were reported.



Holmes Creek bed restored near KP 1175.

Colony Farm Regional Park Temporary Workspace

Construction activity is underway at the Colony Farm Regional Park Temporary Workspace near KP 1167. This work area is being used as a laydown yard and pullback area for the Fraser River horizontal directional drill (HDD).

To execute the Fraser River HDD, Trans Mountain's contractor requires a temporary workspace for staging pipe, to weld and to coat the drag section for the new pipe that will be pulled under the Fraser River.

The Indigenous Monitor observed and inspected various environmental mitigations at the temporary workspace, including erosion and sediment control measures, site housekeeping and secondary containment for equipment and machinery. The Indigenous Monitor and Environmental Inspector shared observations with the contractor that additional spill containment measures were needed to mitigate potential sediment transfer from the borehole pit area into a nearby fish-bearing watercourse. This discussion resulted in the installation of polyethylene sheeting along pit perimeter fencing and placement of sandbags for reinforcement.



Polyethylene sheeting installed for secondary containment underneath operating stationary equipment.



Spill containment measures including sandbags and polyethylene sheeting installed around borehole pit area.

Indigenous Monitor Request Dashboard

Indigenous Monitors are provided daily on-site field support from Environmental Inspectors and office support from Indigenous Monitor Coordinators. Indigenous Monitors can also make specific support requests or submit questions through their daily report. Examples include, but are not limited to, requests for Project reports, input from an environmental resource specialist or on-site support from an Elder or other cultural knowledge holder. Requests and their completion status are noted below.

Status	Rolling Total and Type of Requests				
	Project Reports/ Documents	Environmental Resource Specialists	Elder/Cultural Knowledge Holder	Other	Total
Total	3	0	0	0	3
Fulfilled	3	-	-	-	3
Outstanding	-	-	-	-	-

This report has been reviewed by the active Indigenous Monitor(s)

CONTACT US:
Trans Mountain

info@transmountain.com

1.866.514.6700

transmountain.com



[@TransMtn](https://twitter.com/TransMtn)


youtube.com/transmtm




 PO Box 81018
 Burnaby, BC V5H 3B0



TRANSMOUNTAIN