



TRANSMOUNTAIN

Monitoring Socio-Economic Impacts of Construction

Coquihalla Hope Region Highlights

Reporting Period: July–September 2021

Construction related to the Trans Mountain Expansion Project is underway in your region.

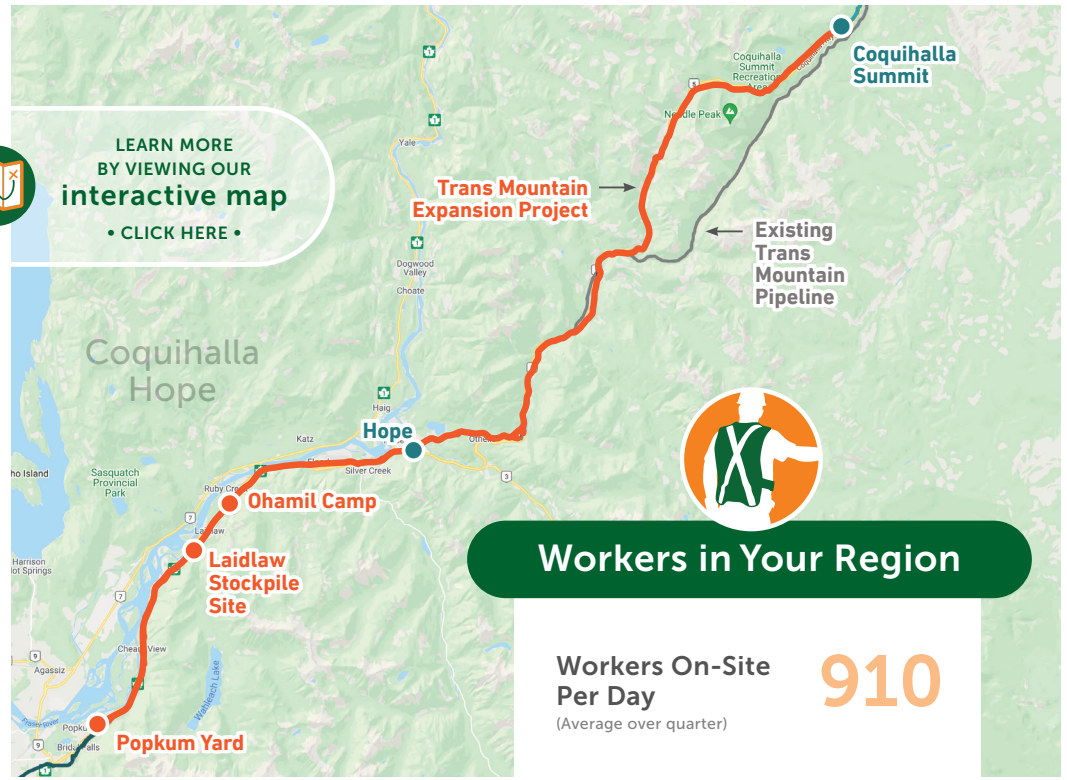


LEARN MORE BY VIEWING OUR interactive map
• CLICK HERE •

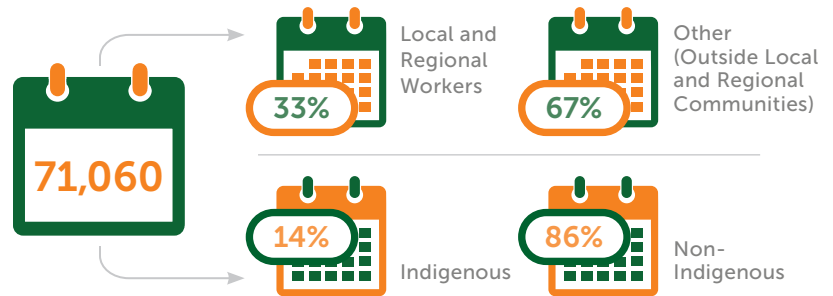
Health and safety for our workers, their families and communities is a top priority while maintaining safe construction activities during COVID-19. Trans Mountain and its Project contractors are adopting government and company health and safety measures to protect its workforce and ensure work can safely continue.

Trans Mountain is monitoring the impact of construction on pipeline communities through a series of indicators identified in the Socio-Economic Effects Monitoring Plan. This Project impact information is gathered for each three-month period in a regional Socio-Economic Monitoring Report. Highlights from the quarterly regional report are provided here.

Go to/click here transmountain.com/socio-economic-reports to view the complete Socio-Economic Monitoring Report for this region.



Three-Month Total of Worker Days On-Site in Reporting Period



Anticipated Worker Days On-Site in the Next Reporting Period*



Worker Accommodation Nights



12,660

At Home



37,020

Local Accommodation



21,380

Camp Community (1 camp in this region)



Total Living Out Allowance Paid to Workers



Worker Health and Medical Services

Number of Times Sent to Local Health Care Facility



Use of Ambulance or Other Public Emergency Transport



Vehicles

Vehicles Parked in Staging Area*
(Daily Average)

565



Workers Transported from Staging Area to Job Site
(Daily Average) 506



* Personal vehicles. No active TMEP yard/staging area during this period. Vehicles parked in Hope. Vehicle numbers based on average of mid- and end-of-month counts.



Construction Inquiries and Topics*

Trans Mountain is committed to addressing any complaints related to operations and construction.

Total number for this Quarter



Sensory Disturbances



Noise from vehicles in Ohamil Camp parking lot (e.g., car alarm).

Trans Mountain follows up on noise complaints received to ensure their relation to Project activity, and works with stakeholders/landowners to resolve where practicable. In this instance, the noise source was resolved. An after-hours phone line has been established at Ohamil Camp to ensure all camp-specific inquiries can be responded to.

Traffic



Complaints regarding damage to vehicles as a result of Coquihalla Highway realignment.

Project-related speeding and traffic around Laidlaw and Hope.

Contractors have a Traffic Management Plan addressing public protection measures, access roads/routes to the construction site and Traffic Control Plans for each work zone. Trans Mountain follows up with the contractor to ensure traffic-related requirements are followed.

Way of Life



Laidlaw resident concerned about observations of women walking along Laidlaw Road in vicinity of Ohamil Camp and potential for prostitution (unsubstantiated).

Trans Mountain has comprehensive Security Plans for all sites, including Ohamil Camp Community and stockpile site on Laidlaw Road. This involves multiple layers of security monitoring regarding any suspicious activity on or near sites. Trans Mountain Security team members meet regularly with local police detachments regarding any security matters that may intersect with Trans Mountain sites or its workforce. Trans Mountain will provide any assistance should the police request it. Trans Mountain's Code of Conduct requires Project workers to conduct themselves in an appropriate and lawful manner at all times, including during their off hours.

* Socio-economic topics related to community impacts only. Data in this report is reflective of activities specific to active construction of the Trans Mountain Expansion Project. Data does not reflect Trans Mountain's ongoing operations and maintenance or inquiries related to future construction activities.

† Inquiries from same individual/household on same topic are considered same inquiry. May be multiple inquiries on similar theme.

CONTACT US:
Trans Mountain Expansion Project

✉ info@transmountain.com
☎ 1.866.514.6700
🌐 transmountain.com

🐦 @TransMtn 📺 youtube.com/transmtn



📍 PO Box 81018, Burnaby, BC
V5H 3B0 CANADA



TRANS MOUNTAIN