

Construction related to the Trans Mountain Expansion Project is underway in your region.

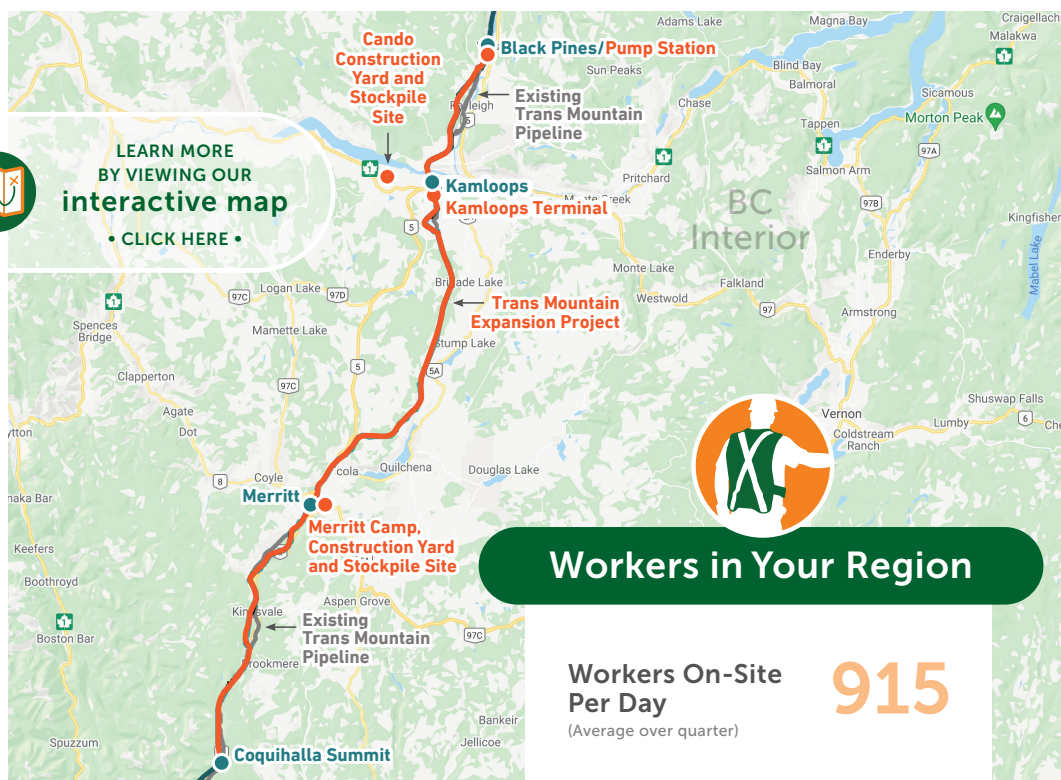
Health and safety for our workers, their families and communities is a top priority while maintaining safe construction activities during COVID-19. Trans Mountain and its Project contractors are adopting government and company health and safety measures to protect its workforce and ensure work can safely continue.

Trans Mountain is monitoring the impact of construction on pipeline communities through a series of indicators identified in the Socio-Economic Effects Monitoring Plan. This Project impact information is gathered for each three-month period in a regional Socio-Economic Monitoring Report. Highlights from the quarterly regional report are provided here.

Go to/click here transmountain.com/socio-economic-reports to view the complete Socio-Economic Monitoring Report for this region.



LEARN MORE
BY VIEWING OUR
interactive map
• CLICK HERE •

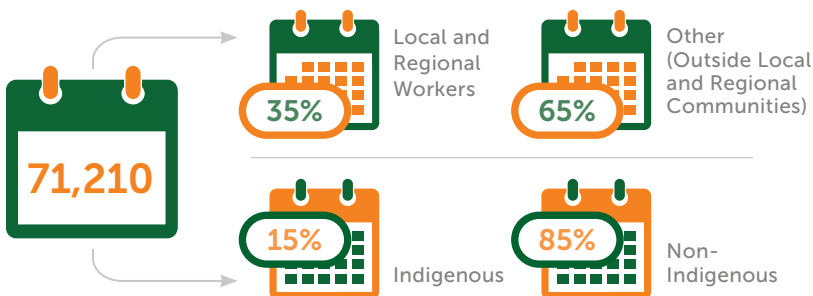


Workers in Your Region

Workers On-Site
Per Day
(Average over quarter)

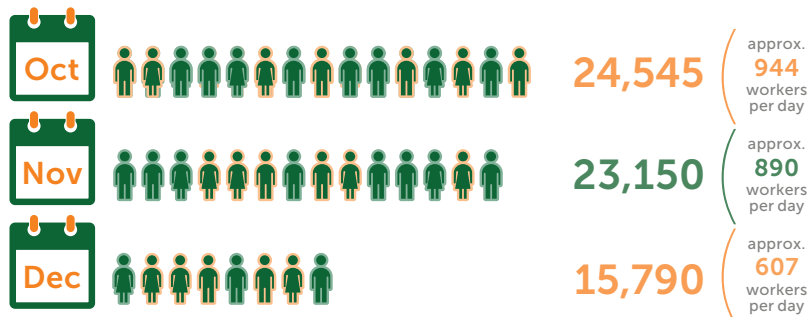
915

Three-Month
Total of
Worker Days
On-Site in
Reporting
Period



Anticipated
Worker Days
On-Site
in the Next
Reporting
Period*

*Estimate at end of reporting period; subject to change.



Worker Accommodation Nights



16,305

At Home



52,920

Local Accommodation



1,985

Camp Community



Total Living
Out Allowance
Paid to Workers



Worker Health and Medical Services

Number of
Times Sent to
Local Health
Care Facility



Use of
Ambulance
or Other Public
Emergency
Transport

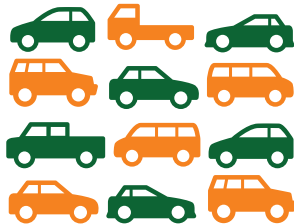


Vehicles

Vehicles Parked
in Staging Area*
(Daily Average)

497

* Personal vehicles.
Vehicle numbers based
on average of mid- and
end-of-month counts.



Workers Transported from
Staging Area to Job Site
(Daily Average)

816



Construction Inquiries and Topics*

Trans Mountain is committed to
addressing any complaints related
to operations and construction.

Total number
for this Quarter



Traffic



**Project-related speeding and dangerous driving in the
Knutsford and Westsyde Road areas.**

Contractors have a Traffic Management Plan addressing public protection measures, access roads/routes to the construction site and Traffic Control Plans for each work zone. Trans Mountain follows up with the contractor to ensure traffic-related requirements are followed.

Sensory
Disturbances



Project-related noise and dust near Black Pines and Westsyde Road.

Trans Mountain will follow up on dust and debris complaints to confirm their relation to Project activity. Trans Mountain is working to ensure compliance with bylaws and requirements. Trans Mountain will work with stakeholders to resolve and address such complaints where practical. Trans Mountain advised that sites are being watered, however, given the dry conditions the frequency will be increased.

* Socio-economic topics related to community impacts only. Data in this report is reflective of activities specific to active construction of the Trans Mountain Expansion Project. Data does not reflect Trans Mountain's ongoing operations and maintenance or inquiries related to future construction activities.

† Inquiries from same individual/ household on same topic are considered same inquiry. May be multiple inquiries on similar theme.

CONTACT US:

Trans Mountain

✉ info@transmountain.com

☎ 1.866.514.6700

🌐 transmountain.com

🐦 [@TransMtn](https://twitter.com/TransMtn)

📮 PO Box 81018, Burnaby, BC
V5H 3B0 CANADA

📺 youtube.com/transmtn

in



TRANSMOUNTAIN