

INDIGENOUS MONITOR OVERVIEW REPORT

Month: October 2021

Indigenous Monitor days on-site: 21

Project Region: Yellowhead, Spread 2

**Kilometre Posts (KPs) monitored:
KP 94–377**

Indigenous Monitors on the Trans Mountain Expansion Project – Overview

The Trans Mountain Expansion Project (the Project or TMEP) is retaining Indigenous Monitors as integrated members of its construction Environmental Inspection team. Indigenous Monitors work with Environmental Inspectors to monitor compliance with mitigation measures to minimize impacts to traditional resource use and cultural/heritage sites during construction. Indigenous Monitors have a strategic role in providing traditional knowledge directly and pragmatically to construction oversight practices and bring an Indigenous lens to daily environmental inspection activities.

This Overview Report provides highlights of the Indigenous Monitors' day-to-day work and key mitigation measures observed by the Monitors related to Project construction in the Yellowhead Region. The purpose of this report is to provide an update on Indigenous Monitor activity to Indigenous groups.

During this reporting period, key activities in the Yellowhead Region involving Indigenous Monitors took place from KP 134–377 in Spread 2 and included monitoring wildlife management, pump station inspections, soil salvage and Traditional Land Use (TLU) sites. The Project Construction Progress Report (Condition 106) for October 2021, which reports environmental events and deficiencies in Tables 4 and 5 respectively, is found [here](#).

The Project has a process for sharing information related to potential TLU and Heritage Resource chance finds during construction. The [Protecting TLU and Cultural Heritage Resources Fact Sheet \(link here\)](#) provides an overview of the chance find communication process. Applicable Indigenous groups are notified and engaged directly on potential chance finds.

For more information: email info@transmountain.com or call 1.866.514.6700.

Trans Mountain COVID-19 – Our Response

Trans Mountain is actively monitoring the COVID-19 situation with the help of federal, provincial and local agencies. Trans Mountain's top priority remains the health and safety of its workforce, their families and our communities.

For more information: transmountain.com/covid19

Wildlife Management

While conducting site monitoring, Indigenous Monitors participate in discussions with the Environmental Inspection team. Conversations pertain to wildlife protection strategies and inspected mitigation measures like environmental feature signage, buffers and animal travel way maintenance. Indigenous Monitors ensure these mitigations are in place.

A Project commitment is to report and record animal sightings and incorporate accommodation for regular animal movement through construction areas. Regular breaks in topsoil piles allow animals to move across the right-of way. Certain features such as a watercourse, roadway or visible animal trail, trigger the need for more frequent topsoil breaks. These are staked and marked by resource specialists and monitored by the Environment Team.

In October, Indigenous Monitors sighted a moose near the right-of-way and reported its location. Indigenous Monitors inspected the animal travel path in that area and confirmed that mitigations were in place. There were no further environmental concerns at the time of inspections.



Topsoil break/animal travel way.

Soil Salvage

During construction activities, Indigenous Monitors were on-site performing monitoring and inspection duties related to soils including ensuring equipment arrives clean on-site, soil piles are placed within the survey limits of the right-of-way, soil piles are properly labelled and that topsoil and transition piles have adequate buffers.

At KP337, Indigenous Monitors were involved in inspecting the salvage and placement of topsoil and subsoil and were available if any potential heritage resources or items of TLU interest were unearthed during soil stripping. During the inspection, the Indigenous monitors confirmed the soil piles were within the survey limits. No concerns were identified.



Topsoil removal KP 337.



Soil salvage pile staked/labelled KP 125

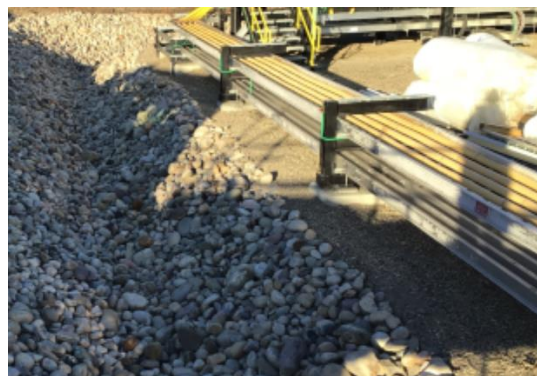
Pump Station Inspection

As part of the Trans Mountain Expansion Project, 12 new pump stations are being added to the pipeline system, 11 for the new pipeline and one for the existing pipeline. Pump stations are a critical component of the operations of the pipeline system. They contain electric motors to drive the pumps that maintain the pressure and flow rate in the pipeline.

In October, joint inspections were conducted by an Environmental Inspector and an Indigenous Monitor at Wolf Pump Station. The Facilities Environmental Protection Plan was reviewed and referenced during the inspection to ensure correct mitigations were identified. The inspection included observing the site's waste management procedures and disposal bins, use of secondary containment, and erosion and sediment control measures in place in and around the facility. No cultural or environmental concerns were recorded at the time of the inspection.



Wolf Pump Station KP 205.

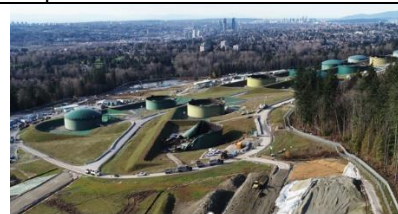


Wolf Pump Station KP 205.

TMEP Linewide Indigenous Monitor Meeting

Trans Mountain Indigenous Monitors from across the project gather annually for a team meeting to collaborate and discuss the TMEP IM program and topics of interest related to environmental inspection, monitoring and Indigenous interests.

On October 29, Indigenous Monitors from all TMEP spreads and terminal locations gathered via TEAMS web conference for a linewide meeting. This collaborative meeting covered many topics, including TMEP construction updates and milestones, support and information request mechanisms, and environmental skills development training/career progression opportunities. The Indigenous Monitors also prepared and presented information on their respective spread or location, including topics such as TLU protection, plant gathering and cultural use sites, reclamation, archaeological monitoring, erosion and sediment control, watercourse diversion, wildlife planning and mitigations, and offshore marine steel pile driving.



Erosion & Sediment Control
Creek Diversions



Westridge Marine Terminal
Mitigation Measures for Impact Pile Driving



Trans Mountain Expansion Project
Colony Farm

TLU Sites

During construction, cultural use areas are noted along the right-of-way. Such locations have been identified during TLU studies conducted by Indigenous groups prior to construction. As part of the Environmental Protection Plan, a TLU Sites Discovery Contingency Plan outlines steps to take if previously unidentified TLU sites are identified during construction.

Indigenous Monitors inspected previously identified TLU sites along the right-of-way, including but not limited to: TLU-7, TLU-8, TLU-9, TLU-12, TLU-13, TLU-14 and TLU-19. Mitigation measures in place included signage, flagging and documentation of any current use. Indigenous Monitors report deficiencies in these mitigations to an Environmental Inspector.

Indigenous Monitors assist, where possible, with corrective actions and confirm completion. An Indigenous Monitor noted the signage for TLU-19 was facing in the wrong direction at the east boundary. The Environmental Inspector entered the corrective action and signage was adjusted accordingly. There are no outstanding deficiencies at the above-mentioned sites.



Monitoring previously identified TLU sites along the right-of-way.

Indigenous Monitor Request Dashboard

Indigenous Monitors are provided with daily on-site field support from Environmental Inspectors and office support from Indigenous Monitor Coordinators. Indigenous Monitors can also make specific support requests or submit questions through their daily report. Examples include but are not limited to requests for Project reports, input from an environmental resource specialist or on-site support from an Elder or other cultural knowledge holder. Monthly requests and their completion status are noted below.

Status	Rolling Total and Type of Requests				
	Project Reports/Documents	Environmental Resource Specialists	Elder/Cultural Knowledge Holder	Other	Total
Total	6	1	5	-	12
Fulfilled	6	1	5	-	12
Outstanding	-	-	-	-	-

This report has been reviewed by the active Indigenous Monitor(s)

CONTACT US:

Trans Mountain
 info@transmountain.com
 1.866.514.6700
 transmountain.com

  @TransMtn

 [youtube.com/transmtn](https://www.youtube.com/transmtn)



 PO Box 81018
 Burnaby, BC V5H 3B0

