

**How to Play:**

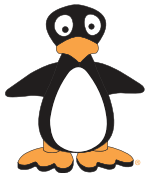
1. Shuffle the cards and place them face down in an array.
2. Players take turns flipping two cards face up.
3. If the cards (number of feet) add up to 10, the player keeps those cards.
4. If the cards do not add up to 10, they are turned face down.
5. The player plays until they do not have a make-ten match.
6. Play continues until all cards are removed.
7. The winner is the player with the most cards.

**Supplies:**

- 2 decks of JiJi Creature Cards

**For 2 to 4 Players**

## Make Ten Concentration



## Make Ten Concentration

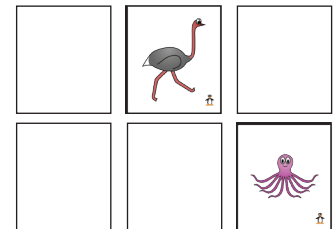
**For 2 to 4 Players**

**Supplies:**

- 2 decks of JiJi Creature Cards

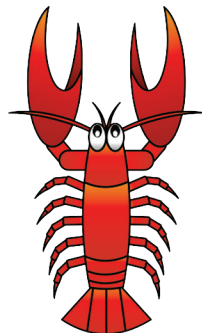
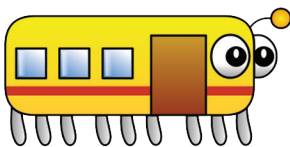
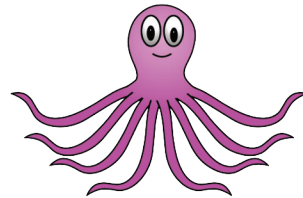
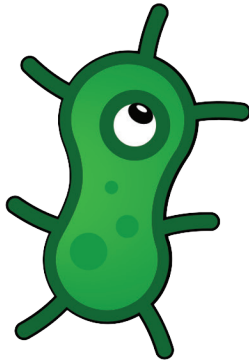
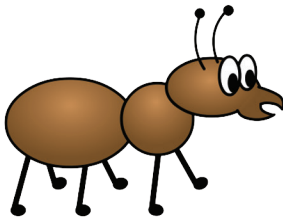
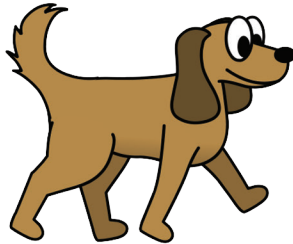
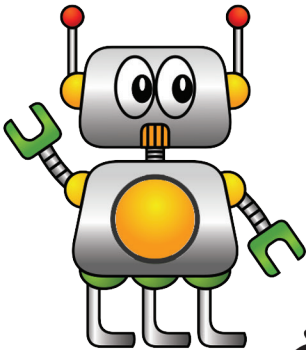
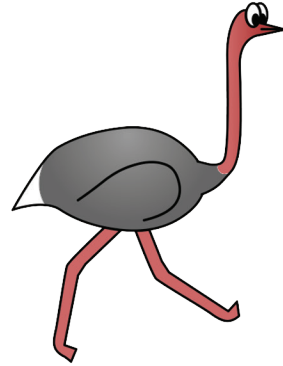
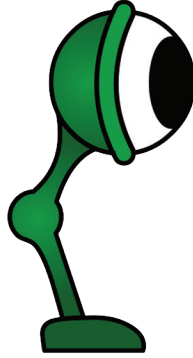
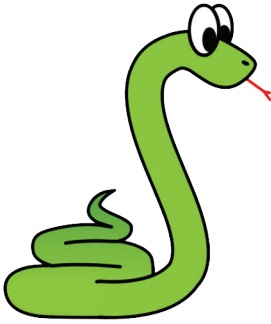
**How to Play:**

1. Shuffle the cards and place them face down in an array.
2. Players take turns flipping two cards face up.
3. If the cards (number of feet) add up to 10, the player keeps those cards.
4. If the cards do not add up to 10, they are turned face down.
5. The player plays until they do not have a make-ten match.
6. Play continues until all cards are removed.
7. The winner is the player with the most cards.





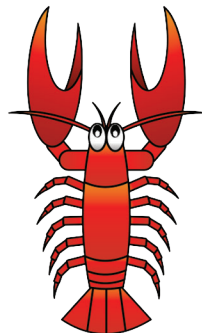
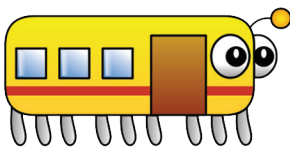
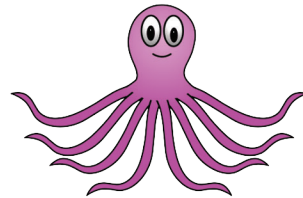
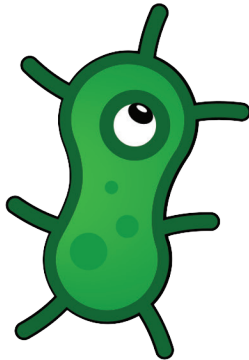
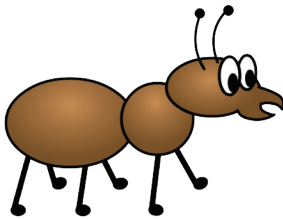
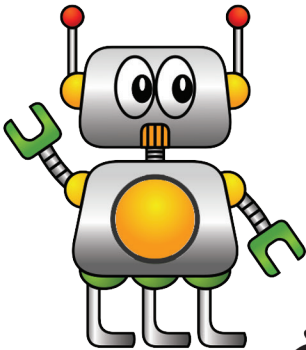
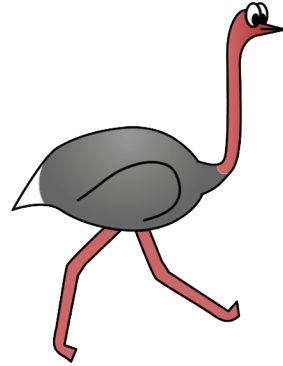
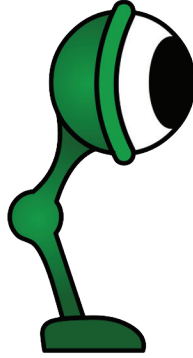
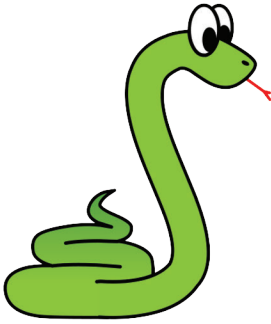
# ST Math Creatures Resources



STMath.



# ST Math Creatures Resources



STMath.