

# Tsunami Deployer SharePoint 2001 Exporter Guide

Version 2.6

© Copyright 2010. Tzunami Inc. All rights reserved.

All intellectual property rights in this publication are owned by Tzunami, Inc. and protected by United States copyright laws, other applicable copyright laws and international treaty provisions. Tzunami, Inc. retains all rights not expressly granted. No part of this publication may be reproduced in any form whatsoever or used to make any derivative work without prior written approval by Tzunami, Inc.

No representation of warranties for fitness for any purpose other than what is specifically stated in this guide is made either by Tzunami, Inc. or by its agents.

Tzunami, Inc. reserves the right to revise this publication, and/or make improvements or changes in the product(s) and/or the program(s) described in this documentation at any time without prior notice.

Any software on removable media described in this publication is furnished under a license agreement included with the product as a separate document. If you are unable to locate a copy, please contact Tzunami, Inc. and a copy will be forwarded to you.

Tzunami is either a registered trademark or a trademark of Tzunami, Inc. in the United States and/or other countries.

All other brand or product names are trademarks or registered trademarks of their respective companies.

For further information, you can contact Tzunami Inc at:

Tzunami Inc., 500 108th Ave NE, Suite 800

Bellevue, WA 98004, USA

Email: [sales@tzunami.com](mailto:sales@tzunami.com), [support@tzunami.com](mailto:support@tzunami.com)

Web: <http://www.tzunami.com>

# Table of Contents

- 1 About SharePoint 2001 Exporter..... 1**
  - Supported Types ..... 1
  - Security ..... 1
- 2 Installing the Exporter ..... 3**
- 3 Exporting from SharePoint 2001..... 5**
- 4 Extending the Exporter License ..... 7**



# 1 About SharePoint 2001 Exporter

SharePoint 2001 Exporter enables migrating SharePoint 2001 content into SharePoint Server 2010/SharePoint Foundation 2010 (SPS2010/SPF2010), Microsoft Office SharePoint Server 2007/Windows SharePoint Services 3.0 (MOSS/WSS3.0), or Microsoft SharePoint Portal Server 2003/Windows SharePoint Services 2.0 (SPS2003/WSS2.0) using Tsunami Deployer.

To load SharePoint 2001 content into Tsunami Deployer, you must first extract the content, using SharePoint 2001 Exporter, into TDX (Tsunami Deployer Export) and STDX (Separate Tsunami Deployer Export) files. You can then load this TDX file into a Deployer project.

**Note:** When working with Deployer on several machines, you can run an export on one machine and load the exported data on another.

## Supported Types

The following items are exported from SharePoint 2001:

- Folders.
- Documents.

## Security

In addition to the structure and items, SharePoint 2001 Exporter extracts security information of the folders containing those items. The following permissions are used in the exporter:

- Readers.
- Authors.
- Approvers.
- Coordinators.

Each item is assigned an ACL defining the permissions of the various members according to the roles they were assigned.

**Note:** The exporter automatically creates five default roles that are used during the deployment process. The roles include Readers (Readers permission), Authors (Authors and Readers permissions), Approvers (Approvers, Authors and Readers permissions), Only Approvers (Approvers permission), and Coordinators (Approvers, Authors, Coordinators and Readers permissions).



## 2 Installing the Exporter

SharePoint 2001 Exporter is installed during Tsunami Deployer installation. For instructions on installing Tsunami Deployer, refer to the *Tsunami Deployer Installation Guide*.

SharePoint 2001 Exporter requires the *Microsoft Office SharePoint Portal Server 2003 Client Components for Backward-Compatible Document Libraries*. You can find these Client Components on the SPS2003 Installation CD or at the following website:

<http://www.microsoft.com/downloads/details.aspx?FamilyID=DF39E250-F7AE-445A-AC9D-A80C9035ED6B&displaylang=en>.





# 3 Exporting from SharePoint 2001

The exporter enables you to export SharePoint 2001 content to a TDX file.

**Note:** When exporting, keep the following in mind:

**Export in small chunks.** When exporting from your source system, perform the export in small chunks of about 40K-50K files each that have a common business logic or some other logic.

**Ensure consistency.** Make sure that the content of the different exports does not overlap and that, while exporting, no changes are made to the source data.

**To export to a TDX file:**

1. In Tsunami Deployer, right-click in the SharePoint 2001 tab source store area and select **Export SharePoint 2001 to TDX**.

The Export SharePoint 2001 Data window appears for entering export information.

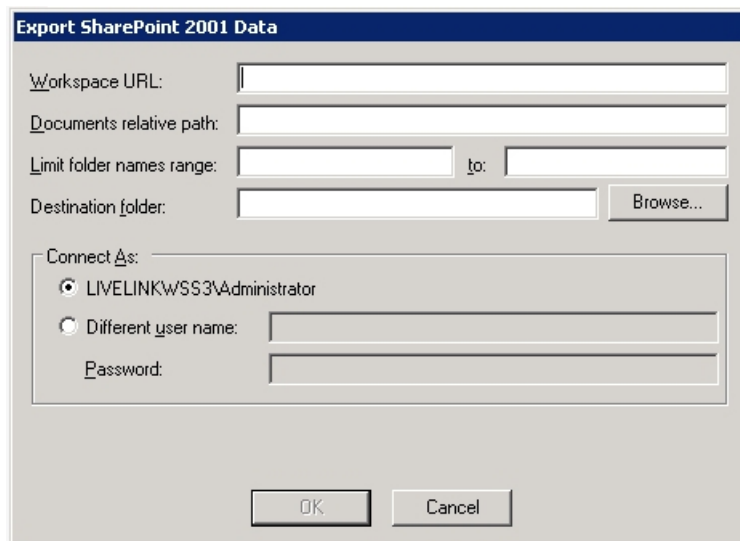


Figure 1: Export SharePoint 2001 Data Window

Table 1: Export SharePoint 2001 Data Window – Description of Fields

Field	Description
Workspace URL	Enter the full URL for the SharePoint 2001 workspace. For example, <a href="http://server/workspace">http://server/workspace</a> .
Documents relative path	Enter a relative path to the documents folder or any other subfolder to be exported. For example: /Documents.

Field	Description
Limit folder names range	If you want to export only certain folders, enter a range of names for folders to be extracted. For example, entering "a" to "k" will export all the folders beginning with a-k under the specified relative path.
Destination folder	Enter a location in the file system into which to export the files and generated TDX information.
Connect As	Specify the user credentials to use when connecting to SharePoint 2001. Select the currently logged-in user, or select <b>Different user name</b> and enter a user name and a password. The selected account must have Coordinator privileges in the workspace.

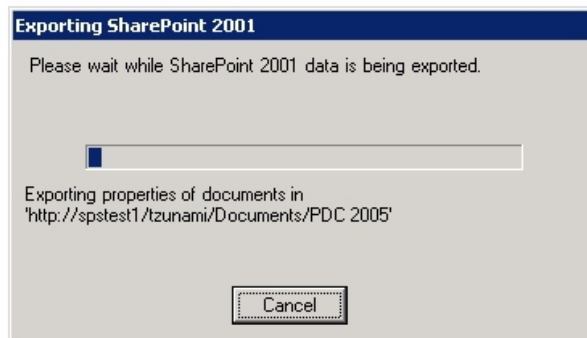
2. Click **OK** to start the extraction process. A progress window appears.

**Notes:** You can click **Cancel** at any time to cancel the export process.

If the export folder already exists, a warning appears, informing you that the destination folder already exists and if you continue all existing information will be deleted.

Clicking **OK** confirms the overwrite, and clicking **Cancel** returns you to the Export SharePoint 2001 Data Folder screen to change the destination folder.

An Exporting screen appears with a progress bar, and the export process begins.



*Figure 2: Exporter Progress Screen*

After the extraction process completes successfully, you are prompted to load the exported data into the current Tsunami Deployer project. Clicking **Yes** begins the process of loading the content from the previously exported TDX file into the project. For more information about loading sources, refer to the *Tsunami Deployer User Guide*.

## 4 Extending the Exporter License

Tsunami SharePoint 2001 Exporter uses a default license that can be used for evaluation purposes. This license is limited in the number of items that are exported. If the license does not match your evaluating needs, contact [support@tzunami.com](mailto:support@tzunami.com) for an extended license. For this purpose you will need to provide the Product Serial Code, and then enter the License Key you receive back from the Tsunami.

### To retrieve the Tsunami Product Serial Code:

1. Select **Start > Programs > Tsunami > Tsunami License Update**.  
Tsunami License Update window opens (Figure 3).

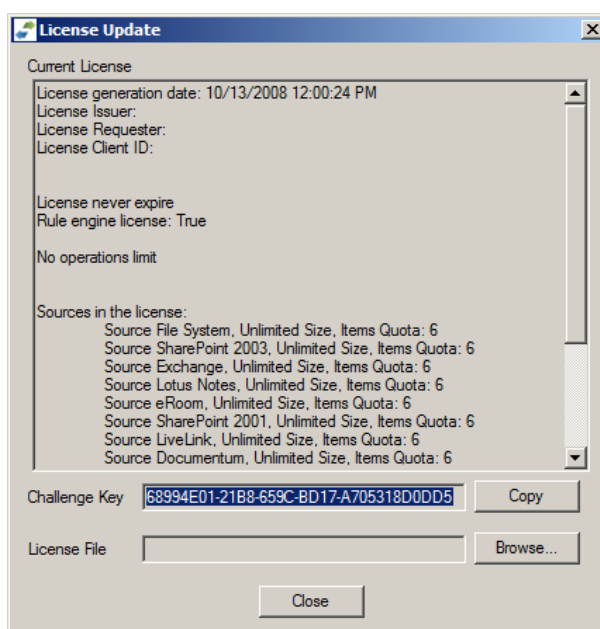


Figure 3: License Update window

2. Click **Copy**. This copies the Product Serial Code to the clipboard.
3. Paste the contents of the clipboard into an email and send it to the Tsunami Support Team at [support@tzunami.com](mailto:support@tzunami.com).

### To extend the Tsunami license:

4. Select **Start > Programs > Tsunami > Tsunami License Update**.  
Tsunami License Update window opens (Figure 3).
5. Click **Browse** and select the new License Key file received from the Tsunami Support Team.

**Note:** If an error message appears, contact the Tsunami Support Team at [support@tzunami.com](mailto:support@tzunami.com).