



Tsunami Deployer Installation Guide

Version 3.3

Table of Contents

PREFACE	IV
INTENDED AUDIENCE.....	IV
STRUCTURE	IV
CONVENTIONS	IV
TECHNICAL SUPPORT.....	V
COMMENTS AND SUGGESTIONS	V
1 PRE-REQUISITES FOR INSTALLING TZUNAMI DEPLOYER.....	1-1
1.1 INSTALLATION COMPONENTS OF TZUNAMI DEPLOYER.....	1-2
1.2 SYSTEM REQUIREMENTS	1-3
1.3 SOFTWARE REQUIREMENTS	1-3
1.4 NETWORK REQUIREMENTS	1-4
1.4.1 Communication between Deployer and Tzunami RS.....	1-4
1.4.2 Communication between LRS and Deployer/ RS	1-4
1.4.3 Communication between client machine and SPS2003/WSS2.0 Server.....	1-4
1.5 PERMISSION REQUIREMENTS	1-5
1.5.1 Tzunami Deployer	1-5
1.5.2 Tzunami Deployer Remote Service	1-7
2 INSTALLING TZUNAMI DEPLOYER AND SERVICE COMPONENTS.....	2-8
2.1 INSTALLING TZUNAMI DEPLOYER	2-9
2.2 INSTALLING TZUNAMI DEPLOYER SERVICE COMPONENTS.....	2-12
2.2.1 Tzunami Deployer Licensing Service	2-12
2.2.2 Tzunami Deployer Remote Service	2-12
2.2.3 Tzunami Link Resolver Service	2-18
2.3 UNINSTALL TZUNAMI DEPLOYER AND SERVICE COMPONENTS.....	2-24
2.3.1 Uninstallation using Installer	2-24
2.3.2 Uninstallation using Control Panel.....	2-24
2.3.3 Uninstallation using shortcuts	2-25
3 LICENSING INFORMATION	3-25
4 COPYRIGHT AND TRADEMARK.....	4-26

List of Tables

Table 1-1: Hardware Requirements.....	1-3
Table 1-2: Communication between Tzunami Deployer and Tzunami Remote Service.....	1-4
Table 1-3: Communication between LRS and Tzunami Deployer/RS	1-4
Table 1-4: Communication between Client Machine and SPS2003/WSS2.0 Server	1-5
Table 1-5: SharePoint Online Permissions	1-6
Table 1-6: SharePoint Portal Server 2003 Permissions.....	1-6
Table 2-1: Remote Service Settings	2-16
Table 2-2: Deployer Settings	2-23

List of Figures

Figure 2-1: Welcome Window	2-9
Figure 2-2:End-User Licensing Agreement Window	2-10
Figure 2-3: Custom Setup Window	2-10
Figure 2-4: Installing Tzunami Deployer	2-11
Figure 2-5: Installation Complete Window	2-11
Figure 2-6: Welcome Window	2-13
Figure 2-7: End-User Licensing Agreement Window	2-13
Figure 2-8: Custom Setup Window	2-14
Figure 2-9: Service Account Window	2-14
Figure 2-10: Installing Tzunami Deployer ServiceComponents	2-15
Figure 2-11: Installation Complete Window	2-15
Figure 2-12: Remote Service Setting Window	2-16
Figure 2-13: Tzunami Deployer Remote Service Properties Window.....	2-18
Figure 2-14: Tzunami Link Resolver Service Architecture.....	2-19
Figure 2-15: Welcome Window	2-20
Figure 2-16: End-User Licensing Agreement Window	2-20
Figure 2-17: Custom Setup Window	2-21
Figure 2-18: Installing Tzunami Deployer Link Resolver Service.....	2-21
Figure 2-19: Installation Complete Window	2-22
Figure 2-20: Deployer Settings Window	2-23

PREFACE

This preface provides the following information about this Tsunami Deployer Installation Guide:

- Intended Audience
- Structure
- Conventions
- Technical Support
- Comments and Suggestions

INTENDED AUDIENCE

This information is intended for:

- System Administrators who are responsible for setting migration environment using Tsunami Deployer.
- Project Managers and IT Managers who create and regulate usage of Tsunami Deployer, Tsunami Deployer Remote Service and Tsunami Link Resolver Service.

STRUCTURE

This Tsunami Deployer Installation Guide is organized as follows:

- **Preface** contains the overview of this manual.
- **Chapter 1 “Prerequisites for Installing Tsunami Deployer”** details the minimum system requirements, network requirements and permission requirements to install Tsunami Deployer.
- **Chapter 2 “Installing Tsunami Deployer and Service Components”** contains installation and configuration instructions for Tsunami Deployer, Tsunami Deployer Service Components.

CONVENTIONS

The following text conventions are used in this document:

- Commands and keywords are given in **boldface**.
- Terminal sessions, console screens, or system file names are displayed in **fixed width fonts**



Caution indicates that the described action might result in program malfunction or data loss.



Notes contain helpful suggestions about or references to materials not contained in this manual.



Tips provide information that might help you solve a problem.

TECHNICAL SUPPORT

Before contacting Tsunami Deployer Support team, ensure that you are referencing the latest copy of this user guide (Ctrl+Click to follow link) [Tsunami Deployer Installation Guide](#).

If you have searched our reference materials and the issue still persists, contact Tsunami Deployer Support Team at support@tsunami.com.

COMMENTS AND SUGGESTIONS

Your feedback is important to us and will help us to provide the most accurate and high quality information possible in our documentation. Send us comments or suggestions by email to support@tsunami.com. Be sure to include as much of the following as possible:

- The document title.
- The location that the document was accessed from (either downloaded from Tsunami web site or the Tsunami Deployer User Guide and Tsunami Deployer Installation Guide available in Tsunami Deployer).
- The section or chapter number and the original text found in the document.



When you send information to Tsunami Support Team, you grant Tsunami a non-exclusive right to use or distribute the information in any way it believes appropriate without incurring any obligation to you.

1 PRE-REQUISITES FOR INSTALLING TZUNAMI DEPLOYER

This chapter outlines the necessary software, network and security prerequisites needed to install Tzunami Deployer. It contains the following topics:

- *Tzunami Deployer Components*
- **Software Requirements**
- **Network Requirements**
- **Permission Requirements**

1.1 INSTALLATION COMPONENTS OF TZUNAMI DEPLOYER

Tsunami Inc. has different Tsunami Deployer components to perform the data migration from source ECM system to target SharePoint system. There are three types of component installer required to perform the data migration from source to target system.

1. **Tsunami Deployer** installer.

This component is used to create migration process, connecting to source and target system, modeling and deployment of content for migration and finally start migration. This component can be installed in any computer in the network.



The service required for migrating content to SharePoint Online (Office365) using Migration API is installed by default.

2. **Tsunami Deployer ServiceComponents** installer.

This installer includes three components.

- **Remote Service (RS):** Remote Service component required for the communication between SharePoint on premise system and Tsunami Deployer during connection and migration. It is required to be installed in SharePoint Server and is installed as Windows Service. The service should to run using the credential of farm administrator of SharePoint Server.

This component is visible to select during installation **only if SharePoint Server has already installed in the machine.**

This components should be installed in the SharePoint Server.

- **Licensing Service (LS):** Licensing service is used to manage the extended or purchased license from Tsunami Inc. for migration. This component can be installed in any machine in network and is installed as Windows Service. Tsunami Deployer/Remote Service should point to it. This component can be installed in any computer in the network.

- **Link Resolver Service (LRS):** Link Resolver Service is used to manage the links in migrated content to point to target source after migration. It can be installed in any machine in network and is installed as Windows Service. Tsunami Deployer should point to LRS.

This component can be installed in any computer in the network.

3. **Tsunami Exporter** separate installer for each Source ECM system.

Tsunami Inc. supports migration content from wide range of ECM Systems as well besides from SharePoint System and file sharing system. A separate installer for each supported ECM system is available. The installer can be installed in separate machine in network independent to Tsunami Deployer. However, the recommended practice is to install along with Tsunami Deployer, so that Tsunami Exporter can be run from the migration project in Tsunami Deployer.

This component can be installed in any computer in the network. We recommend to install in the computer where Tsunami Deployer is installed.



For Tsunami AquaLogic and Tsunami eRoom, installation should be installed in source ECM system. Then, the exporter content should be imported in Tsunami Deployer.

1.2 SYSTEM REQUIREMENTS

The following table lists the system requirements for Tsunami Deployer and Deployer Service Components.

Table 1-1: Hardware Requirements

Components	Minimum Requirements
Computer and processor	2GHz Pentium processor or equivalent
Memory	2 GB (Minimum); 4GB (Recommended)
Hard disk	80Mb (additional space will be required for the Tsunami Deployer projects, which may vary from 10 Mb to 20 GB).
Supported Architectures	x86 and x64
Network	Intranet/Internet access depending on connectivity requirements
Display	800 x 600, 256 colors (Minimum); 1024 x 768 high color, 32-bit (Recommended)
Microsoft .NET Framework	Microsoft .NET Framework 4.5 You can download Microsoft .NET Framework 4.5 from: https://www.microsoft.com/en-us/download/details.aspx?id=30653 Microsoft .NET Framework 4.0 You can download Microsoft .NET Framework 4.0 from: http://www.microsoft.com/download/en/details.aspx?id=17851 Microsoft .NET Framework 3.5 (including 3.0 and 2.0) You can download Microsoft .NET Framework 3.5 SP1 from: http://www.microsoft.com/en-us/download/details.aspx?id=22 http://www.microsoft.com/en-us/download/details.aspx?id=3005

1.3 SOFTWARE REQUIREMENTS

The following applications are required for Tsunami Deployer for SharePoint Online.

- Microsoft Online Service Sign-in Assistant
- Microsoft Azure Active Directory Module for Windows PowerShell

1.4 NETWORK REQUIREMENTS

Some services on the SharePoint Server must be enabled to run Tzunami Deployer smoothly. You must run following Windows Services on the SharePoint Server:

- Remote Registry
- Computer Browser
- Server

You must enable File and Printer Sharing for Microsoft Networks for all network connections used during communications between Deployer and the SharePoint Server to which Deployer connects.

You must disable Proxy Authentication even if it has exceptions set for local addresses or the SharePoint Server address specifically. If you wish to use Deployer to connect to a SharePoint farm through a Proxy Server, you must make certain specific configuration changes. Please contact Tzunami Support Team at support@tzunami.com for more information.

1.4.1 Communication between Deployer and Tzunami RS

The following table lists the ports that should be open for communication between Tzunami Deployer (client machine) and Tzunami Deployer Remote Service, which is installed on SharePoint Web Front-End servers.

Table 1-2: Communication between Tzunami Deployer and Tzunami Remote Service

Service/Application	Function	Ports	Protocols
Tzunami Deployer	Tzunami Deployer	10028	NET.TCP
Remote Service		11028	HTTP

1.4.2 Communication between LRS and Deployer/ RS

The following table lists the ports that should be open for communication between the Tzunami Link Resolver Service and Tzunami Deployer/Tzunami Deployer Remote Service.

Table 1-3: Communication between LRS and Tzunami Deployer/RS

Service/Application	Function	Ports	Protocols
Tzunami Link Resolver Service	Tzunami Deployer/ Tzunami Deployer Remote Service	9028	NET.TCP

1.4.3 Communication between client machine and SPS2003/WSS2.0 Server

The following table lists the ports that should be open for communication between the client machine and the SPS2003/WSS2.0 Server.

Table 1-4: Communication between Client Machine and SPS2003/WSS2.0 Server

Service/Application	Function	Ports	Protocols
SharePoint	Virtual Server (IIS Web site)	The defined ports of the Virtual Servers (default: 80)	TCP (HTTP)
	Central Administration Site	Varies for different SharePoint installations	TCP (HTTP)
NetBIOS	Name Service	137	TCP + UDP
	Datagram Service	138	UDP
	Session Service	139	TCP
	Microsoft Directory Services	445	TCP + UDP
SQL Server	Microsoft SQL Server (where relevant)	1433	TCP
	Microsoft SQL Server (where relevant)	1434	UDP
	MSDE (where relevant)	Varies for different SharePoint installations	
	JDL-DBKitchen	3086	TCP

1.5 PERMISSION REQUIREMENTS

1.5.1 Tsunami Deployer

1.5.1.1 Connecting to SharePoint Web Front End Server

The user connecting from Deployer to SharePoint Web Front End Server (where Tsunami Remote Service is installed) should have following permissions.

- The user running Tsunami Deployer needs to be a Local Administrator (to get Registry and File System access).
- The user provided in Tsunami Deployer must have permission to connect to the machine where Tsunami Deployer Remote Service is installed (unless the source Remote Service has problems downloading files from the source which results in the Deployer-provided credentials being used).

1.5.1.2 Connecting to SharePoint Online

When connecting to SharePoint Online, the user connecting to the SharePoint Online must have the following permissions:

Table 1-5: SharePoint Online Permissions

SharePoint Implementation	Tsunami Deployer (connect to SharePoint Online credential)
SharePoint Online	SharePoint Online Service Administrator, global administrator or top-level administrator for your organization.
SharePoint Site Collection	Site Owner or Site Collection Administrator

For information about the different accounts, refer to:

<http://onlinehelp.microsoft.com/en-us/office365-enterprises/ff637608.aspx>

1.5.1.3 Connecting to SPS2003/WSS2.0

When connecting to the SPS2003/WSS2.0 Server, the user connecting to the server must have the following permissions:

Table 1-6: SharePoint Portal Server 2003 Permissions

Permission Type	SPS2003/WSS2.0 as Source	SPS2003/WSS2.0 as Target
Administrative permissions on the SharePoint front-end machine (member of the local Administrators group)	+	+
Administrative permissions on the SharePoint sites	+	+
SQL Server Configuration Database	Read	Read
SQL Server Content Databases	Read	Read / Write
SQL Server stored procedures (SQL 2005 only)	Execute	Execute
Administrative share "\\<SharePoint machine>\c\$\Program Files\Common Files\Microsoft Shared\web server extensions" and all subfolders (In case not granted to the Administrators group)	Read	Read
Remote registry access to "Local Machine\SOFTWARE\Microsoft\Shared Tools\Web Server Extensions\" and all sub keys (In case not granted to the Administrators group).	Read	Read

1.5.2 Tsunami Deployer Remote Service

1.5.2.1 Connecting to SharePoint Web Front-End servers

When connecting to the SharePoint Web Front-End Server, you should provide Tsunami Deployer Remote Service with the **SharePoint Server Farm Account credentials** or following permissions.

The user running Tsunami Remote Service must have the following permissions:

- The user account must be a registered as Server Farm Account. This can be set up in SharePoint on the **Central Administration > Security > Configure Service Accounts**.

OR

- “Full Read” and “Full Control” rights *on relevant Web Applications*, including the Central Administration web application. This can be set up in SharePoint on the **Central Administration > Application Management > Manage Web Application** page for SharePoint Server 2010, SharePoint 2013, SharePoint 2016 and SharePoint 2019.
- The user must be a member of the *Farm Administrators group*. This can be set up in SharePoint on the **Central Administration > Security > Manage the Farm Administrative Group** page for SharePoint Server 2010, SharePoint 2013, SharePoint 2016 and SharePoint 2019.
- Read, Write and Execute permissions on the Configuration and relevant Content DB, similar to the Server Farm Account.
- The user must be a member of *Local Administrator group* on the machine where Tsunami Deployer Remote Service is installed.

For information about the different accounts, refer to:

<http://technet.microsoft.com/en-us/library/ee662513.aspx>

<https://technet.microsoft.com/en-us/library/cc678863.aspx>

2 INSTALLING TZUNAMI DEPLOYER AND SERVICE COMPONENTS

This chapter contains information about installing Tzunami Deployer, including the following topics:

- *Installing Tzunami Deployer*
- *Installing Tzunami Deployer Service Components*
- *Uninstall Tzunami Deployer and Service Components*
- *Licensing Information*

2.1 INSTALLING TZUNAMI DEPLOYER

This section of the guide provides you the comprehensive information for installing Tzunami Deployer. This manual also includes information about other related information and technical support.

Installing Tzunami Deployer is simple and easy. You can have it installed and running in no time. This guide will teach you how to install Tzunami Deployer for migrating contents from legacy ECM system to Microsoft SharePoint Products and Technologies.

To install Tzunami Deployer:

1. Unzip the zip file, and run **TzunamiDeployerSetup.msi**. The Tzunami Deployer setup wizard (Welcome window) will launch. To advance through the install wizard, click **Next** on the bottom of each screen.

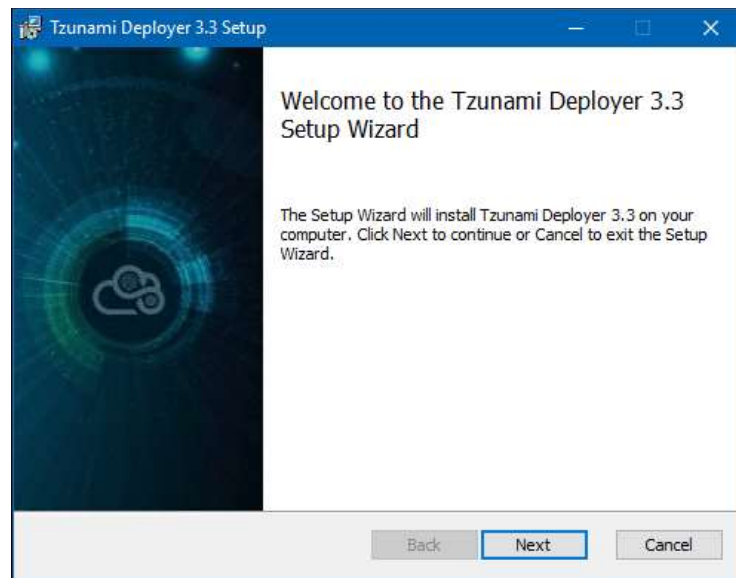


Figure 2-1: Welcome Window

2. In the End User Licensing Agreement panel, click "**I accept the terms in the License Agreement**" and click **Next** to continue installation.

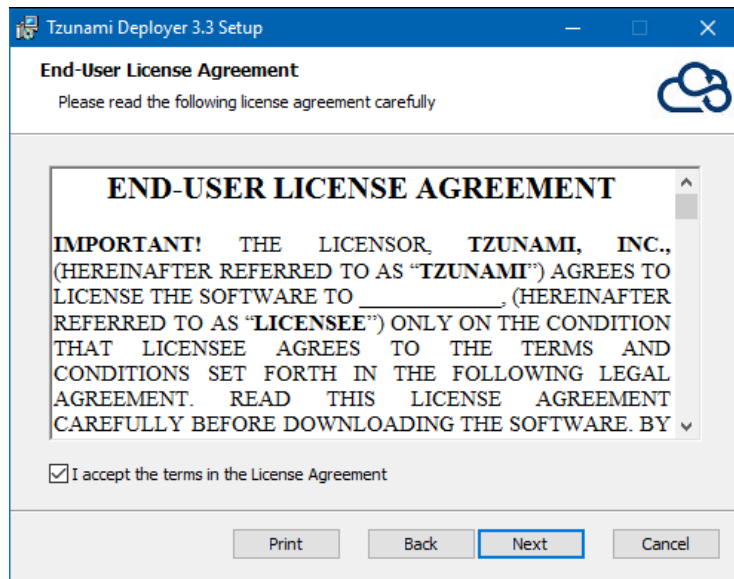


Figure 2-2:End-User Licensing Agreement Window



You are advised to read the terms of the license carefully before proceeding with the installation. If you decline the license terms, the installation cannot proceed.

3. In the Custom Setup panel, do one of the following:
 - To accept the default Destination Folder, click **Next**.
 - To change destination folder, click **Browse** and select a destination folder, click **OK**, and then click **Next**.

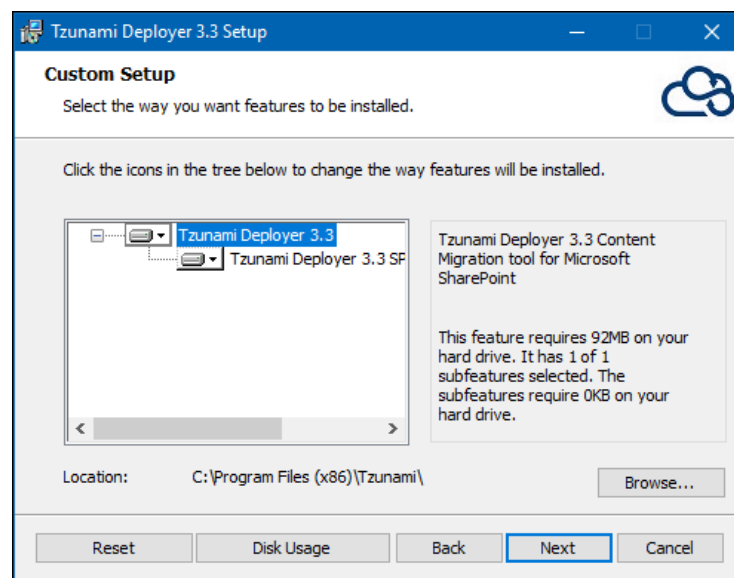


Figure 2-3: Custom Setup Window



By default **Tsunami Deployer 3.3 SPO Migration API Service** is selected. **Tsunami Deployer 3.3 SPO Migration API Service** is required for migrating to SharePoint Online using Migration API. To deselect the service and install Tsunami Deployer only, select **Tsunami Deployer 3.3 SPO Migration API Service** and choose **Entire Feature will be unavailable**.

4. In the Ready to install Tzunami Deployer 3.3 panel, click **Install**.

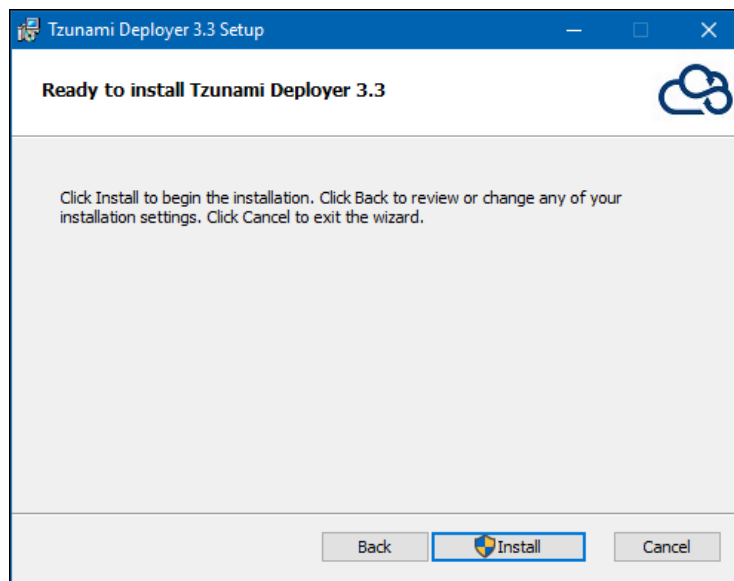


Figure 2-4: Installing Tzunami Deployer

5. Click **Finish** to exit the setup wizard.

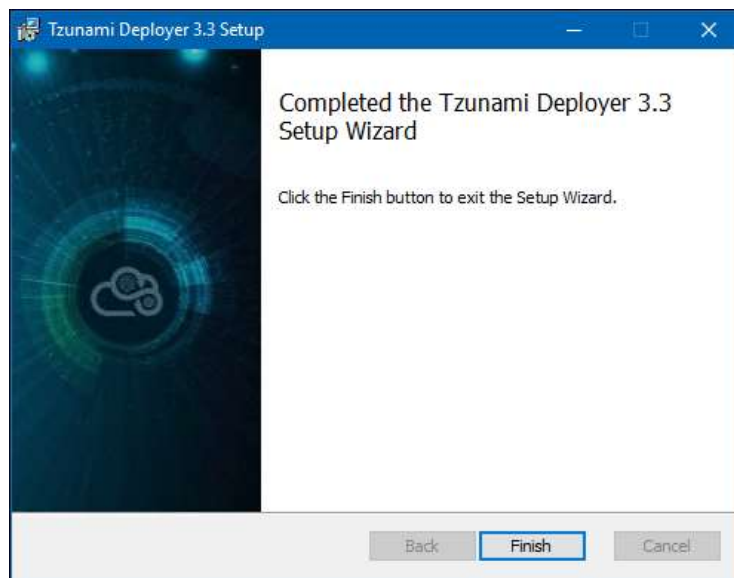


Figure 2-5: Installation Complete Window



When Tzunami Deployer is installed, it comes with a default license that can be used for evaluation purpose only. This license is limited in time and number of operations.

2.2 INSTALLING TZUNAMI DEPLOYER SERVICE COMPONENTS

Tsunami Deployer Service Components consist of three services:

- Tsunami Deployer Licensing Service
- Tsunami Deployer Remote Service
- Tsunami Link Resolver Service

2.2.1 Tsunami Deployer Licensing Service

The installation for the Tsunami Deployer Licensing Service is included in the same ZIP file as the Tsunami Deployer Remote Service.



Tsunami Deployer Licensing Service **MUST BE installed in order for Tsunami Deployer to be able to work.**

For more information about installation and configuration, see [Tsunami Deployer Licensing Guide](#).

2.2.2 Tsunami Deployer Remote Service

Tsunami Deployer Remote Service is a component that runs on the SharePoint Server and interacts with Tsunami Deployer in order to enable remote access to SharePoint servers.

When using Tsunami Deployer to migrate contents from SharePoint Server, you must install the Tsunami Deployer Remote Service on one of the SharePoint Web Front-End servers.



Tsunami Deployer Remote Service is required only when connecting to the SharePoint Web Front-End servers. It **IS NOT required when connecting to SPS2003/WSS2.0 and SharePoint Online.**

2.2.2.1 Installing Tsunami Deployer Remote Service

To install Tsunami Deployer Remote Service Component:

1. On one of the SharePoint Web Front-End servers unzip the zip file, and run **DeployerServiceComponentsSetup.msi**. The Tsunami Deployer 3.3 Service Components Setup Wizard (Welcome window) will be launch. To advance through the install wizard, click **Next** on the bottom of screen.

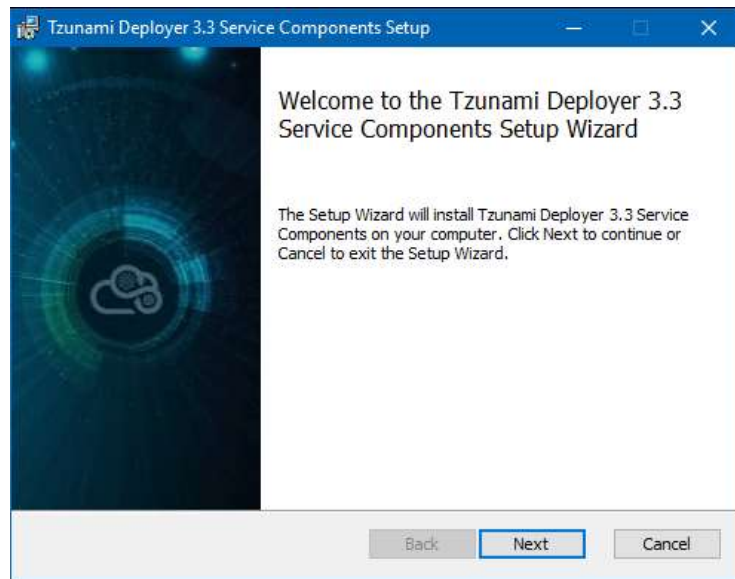


Figure 2-6: Welcome Window

2. In the **End User Licensing Agreement** panel, click **"I accept the terms in the License Agreement"** and click **Next** to continue installation.

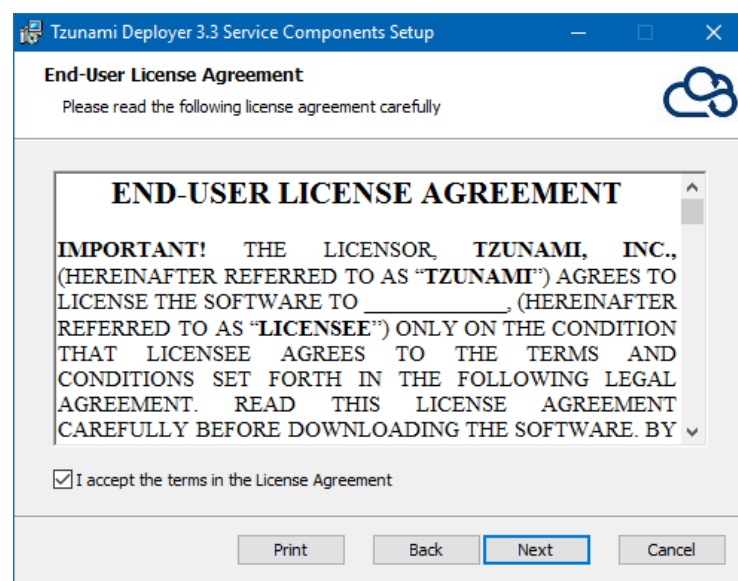


Figure 2-7: End-User Licensing Agreement Window



You are advised to read the terms of the license carefully before proceeding with the installation. If you decline the license terms, the installation cannot proceed.

3. In the **Custom Setup** panel, click **Deployer Remote Service** and do one of the following:
 - To accept the default Destination Folder, click **Next**.
 - To install in other location, click **Browse** and select a destination folder, click **OK** and then click **Next**.

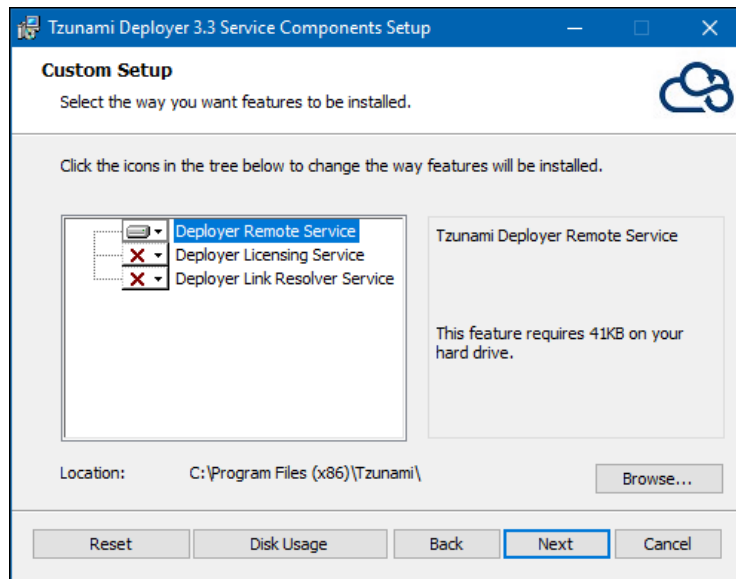


Figure 2-8: Custom Setup Window



To install **Tsunami Deployer Remote Service** only, click **Deployer Licensing Service** and choose **Entire Feature will be unavailable** and again click **Deployer Link Resolver Service** and choose **Entire Feature will be unavailable**.

4. In the **Service** account panel, provide the credential for the Tsunami Deployer Remote Service log on account, and click **Next**. For more information about the Username used for the Tsunami Deployer Remote Service, refer to **Connecting to SharePoint Web Front-End servers** on page 1-5.

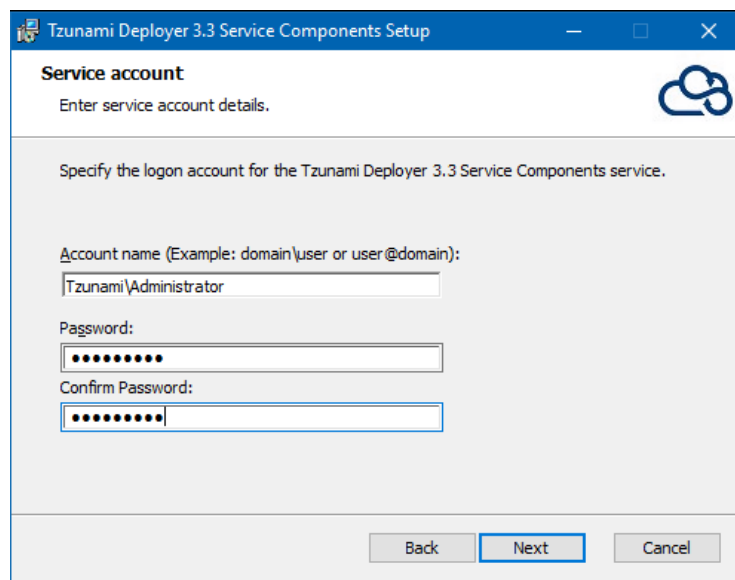


Figure 2-9: Service Account Window

5. In the Ready to install Tsunami Deployer ServiceComponents panel, click **Install**.

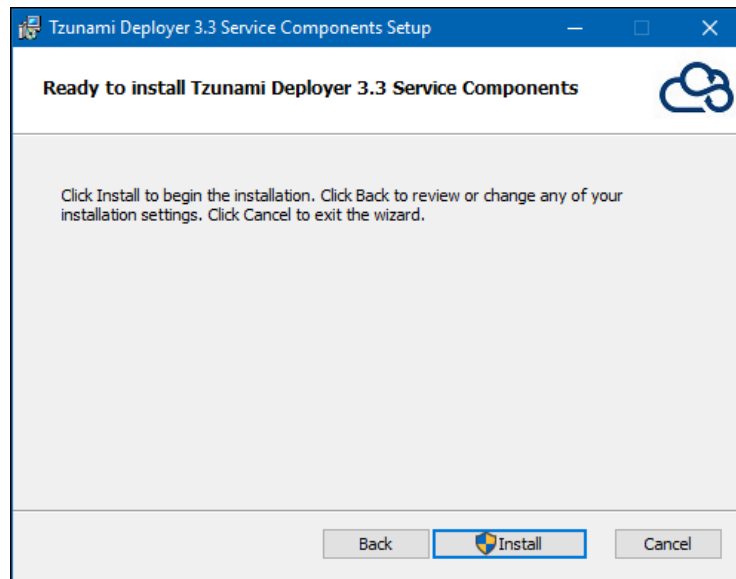


Figure 2-10: Installing Tsunami Deployer ServiceComponents

6. Click **Finish** to exit from the setup wizard.

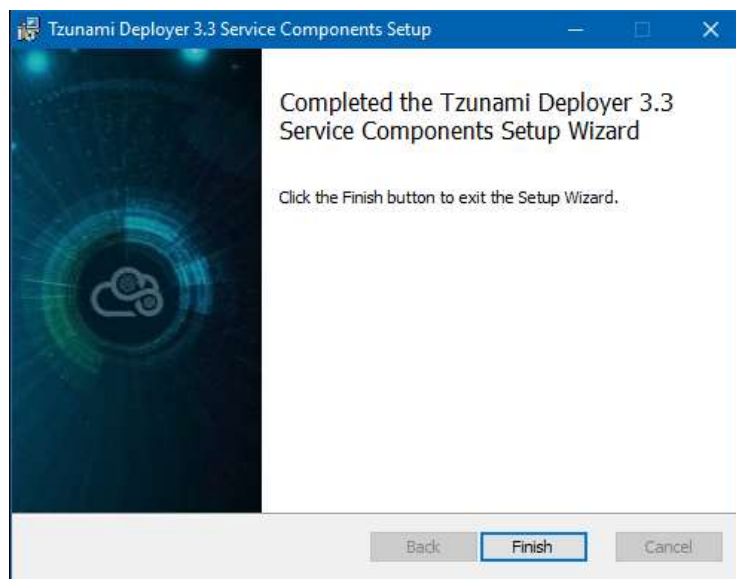
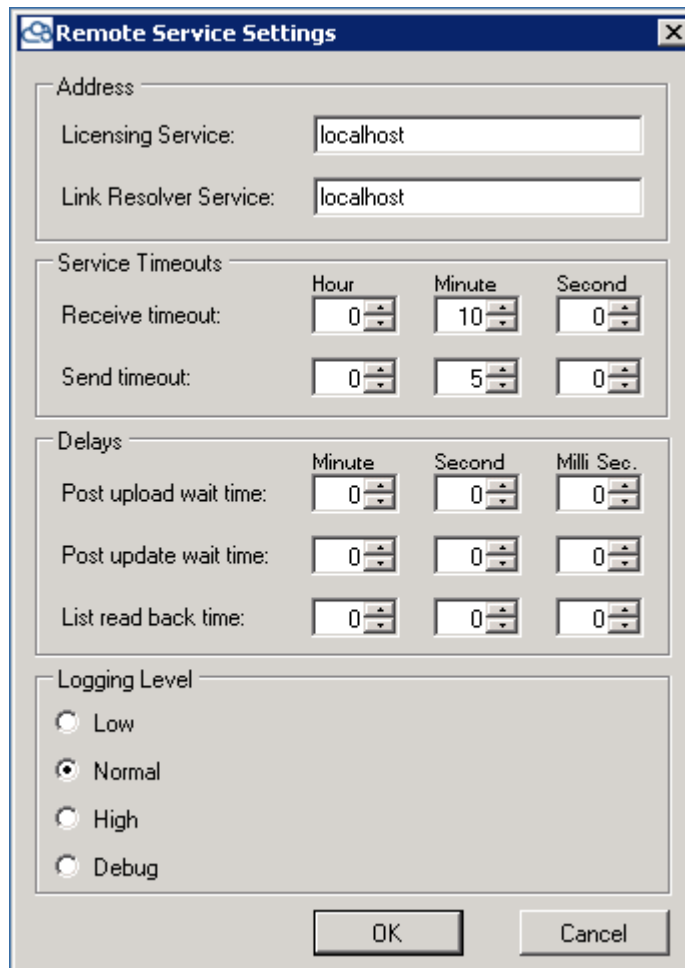


Figure 2-11: Installation Complete Window

Remote Service Settings window will appear.



If the Remote Service Settings window does not appear, click **Start > All Programs > Tsunami > Deployer 3.3 Remote Service > Settings Manager**. For more information, see *Configuring Tsunami Link Resolver Service to communicate with* on page 2-22.



The image shows a Windows-style dialog box titled "Remote Service Settings". It contains four main sections: "Address", "Service Timeouts", "Delays", and "Logging Level".

- Address:** Two text input fields. "Licensing Service:" contains "localhost". "Link Resolver Service:" contains "localhost".
- Service Timeouts:** Two rows of spinners. "Receive timeout:" has Hour: 0, Minute: 10, Second: 0. "Send timeout:" has Hour: 0, Minute: 5, Second: 0.
- Delays:** Three rows of spinners. "Post upload wait time:", "Post update wait time:", and "List read back time:" all have Minute: 0, Second: 0, and Milli Sec.: 0.
- Logging Level:** Four radio buttons: "Low", "Normal" (selected), "High", and "Debug".

At the bottom right are "OK" and "Cancel" buttons.

Figure 2-12: Remote Service Setting Window

7. Fill in the fields according to the information in the following table and click **OK**.

Table 2-1: Remote Service Settings

Field/Item	Description
Address	
Licensing Service	Enter the Server Name or IP address of the machine where the Tsunami Licensing Service is installed. For more information, see <i>Tsunami Licensing Service Guide</i> .
Link Resolver Service	Enter the Server Name or IP address of the machine where Link Resolver Service is installed. For more information about Link Resolver Service, refer to <i>Tsunami Link Resolver Service</i> on page 2-18.
Service Timeout	
Receive Timeout	Specify the duration that Remote Service waits to receive response for its request from Link Resolver Service and Tsunami Licensing Service.

Field/Item	Description
Send Timeout	Specify the duration that Remote Service waits for an operation to complete and send to Link Resolver Service and Tsunami Licensing Service.
Delay	
Post Upload wait time	Specify the time that Remote Service waits after uploading a document.
Post Update wait time	Specify the time that Remote Service waits after updating items property.
List read back time	Specify the time that Remote Service waits after creating a list or library.
Logging Level	Specify the verbosity of the Tsunami Deployer Remote Service logs. The higher the level you select, the more verbose the logs will be. It is recommended to leave this to Debug level.



If the service is not running, check the Windows Event Log for entries pertaining to the **Tsunami Deployer Remote Service**.

2.2.2.2 Changing Tsunami Deployer Remote Service Credentials

To change Tsunami Deployer Remote Service credentials:

1. Click **Start > Run** and enter **services.msc**. The Services window appears.
2. Right-click **Tsunami Deployer 3.3 Remote Service** and select **Properties**. The Tsunami Deployer Remote Service Properties window appears.

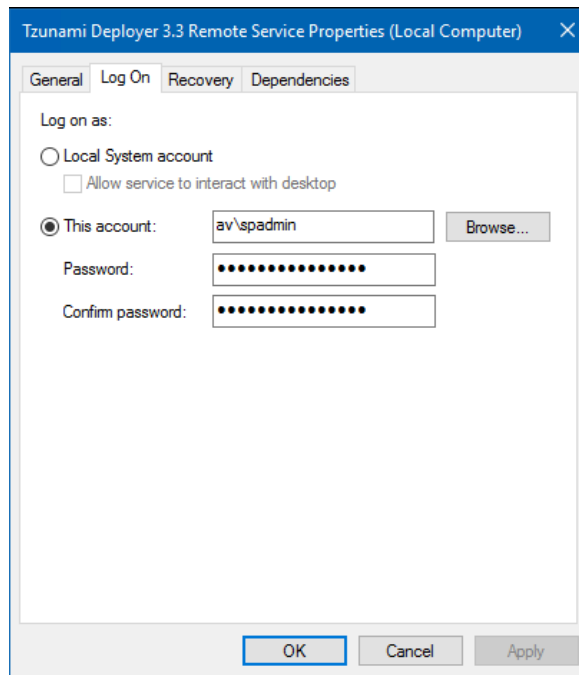


Figure 2-13: Tsunami Deployer Remote Service Properties Window

3. In the Log On tab, enter the user name and password. Use the same user name you enter in Tsunami Deployer when connecting to the SharePoint WFE Server. Make sure the user name has all the required permissions, as detailed in **Connecting to SharePoint Web Front End Server** on page 1-5.
4. Click **OK**.
5. In the Services window, right-click **Tsunami Deployer 3.3 Remote Service** and select **Restart**.

2.2.3 Tsunami Link Resolver Service

Tsunami Link Resolver Service is a component introduced for fixing links during migration. An item (say A) may contain a link to another item (say B) in the source. When A and B have been migrated to target SharePoint (let's say as A' and B'), the link in item A' should point to item B' in the target and not to item B in the source. This requires fixing of the link inside A to point to B' during migration. This is achieved using the Tsunami Link Resolver Service.

The Tsunami Link Resolver Service runs as a windows service. Tsunami Deployer and Tsunami Remote Services communicate with the Tsunami Link Resolver Service to get necessary information for fixing the links in the content during commit. A single instance of the Link Resolver Service should be installed. All Tsunami Deployer and Tsunami Deployer Remote Service should be configured to point to the Link Resolver Service.

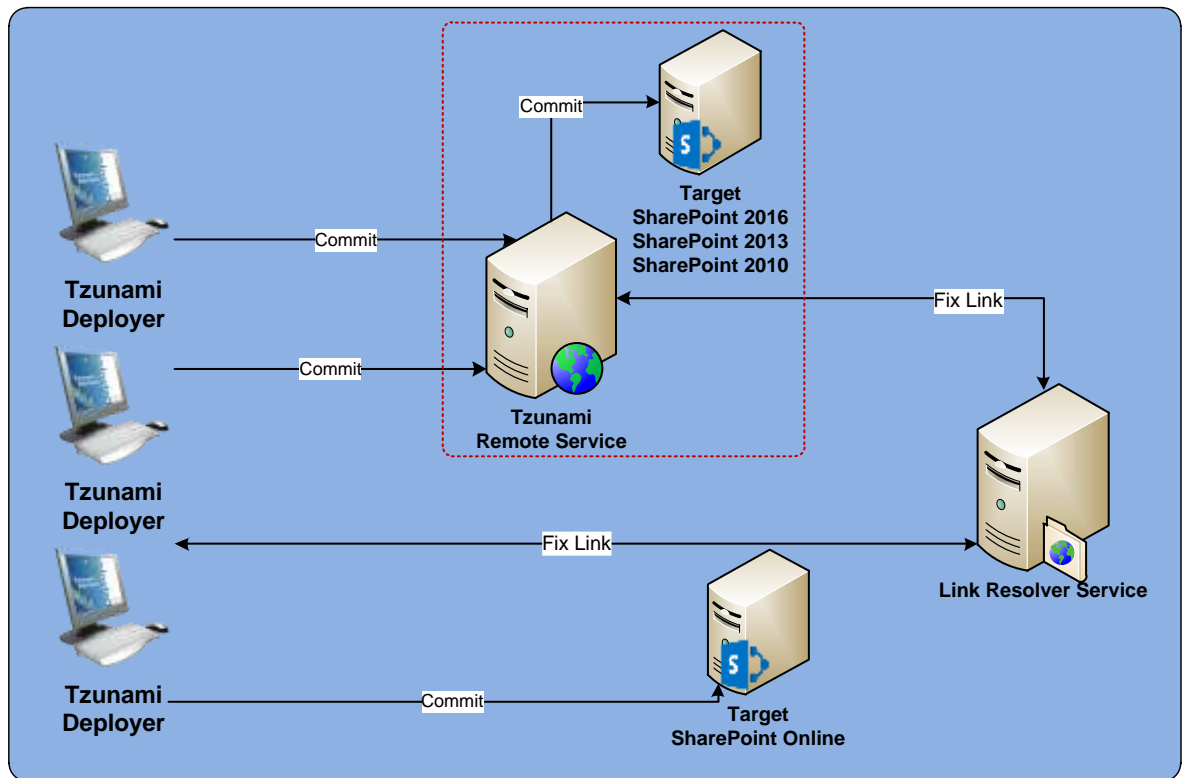


Figure 2-14: Tzunami Link Resolver Service Architecture

2.2.3.1 Installing Tzunami Link Resolver Service

To install Tzunami Link Resolver Service:

1. On one of the SharePoint front-end Web Servers or other server which can be accessible via system running Tzunami Deployer and Tzunami Remote Service, unzip the zip file, and run `DeployerServiceComponentsSetup.msi`. The Tzunami Deployer 3.3 Service Components Setup Wizard (Welcome window) will be launched. To advance through the install wizard, click **Next** on the bottom of each screen.

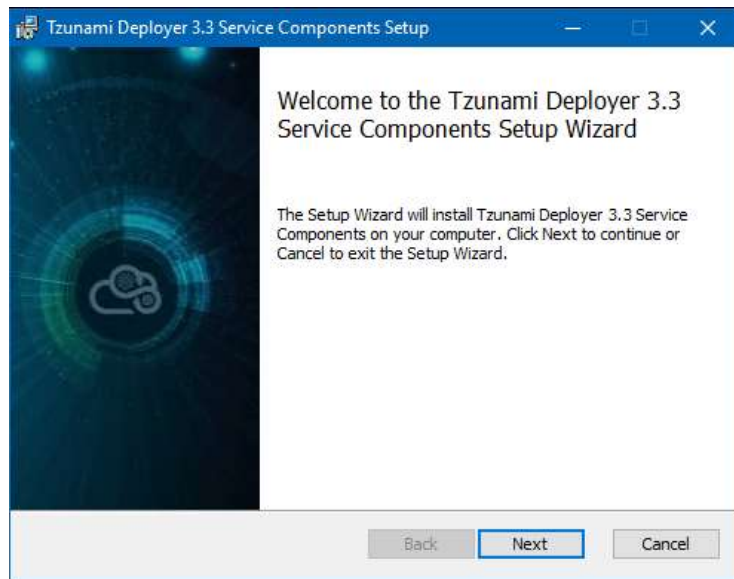


Figure 2-15: Welcome Window

2. In the End User Licensing Agreement panel, click **"I accept the terms in the License Agreement"** and click **Next** to continue installation.

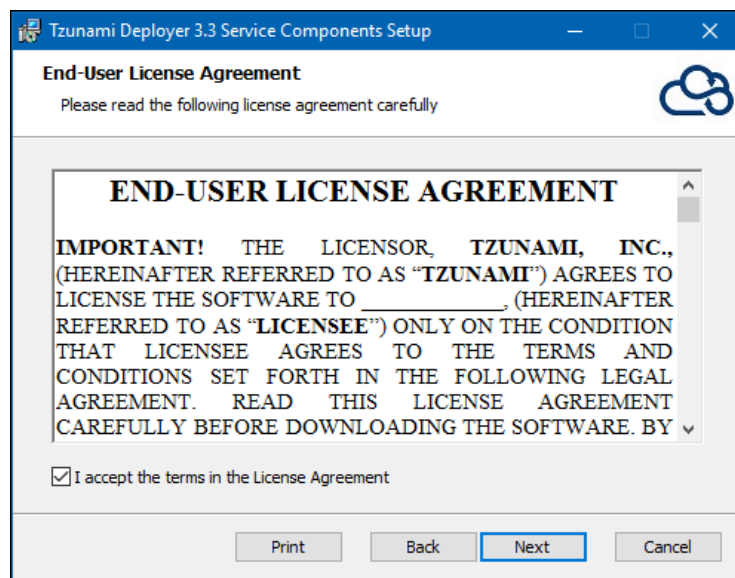


Figure 2-16: End-User Licensing Agreement Window



You are advised to read the terms of the license carefully before proceeding with the installation. If you decline the license terms, the installation cannot proceed.

3. In the Custom Setup panel, click **Deployer Remote Service** and do one of the following:
 - To accept the default Destination Folder, click **Next**.
 - To change the installation path, click **Browse** and select a destination folder, click **OK**, and then click **Next**.

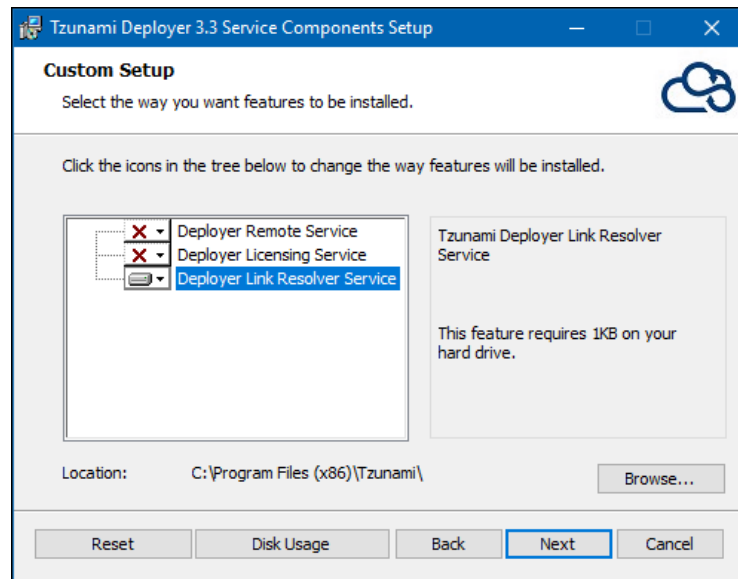


Figure 2-17: Custom Setup Window



To install **Tsunami Link Resolver Service** only, click **Deployer Link Resolver Service** and choose **Entire Feature will be installed in local hard drive** and make sure other components are not selected.

4. In the Ready to install Tzunami Deployer 3.3 Service Components panel, click **Install**.

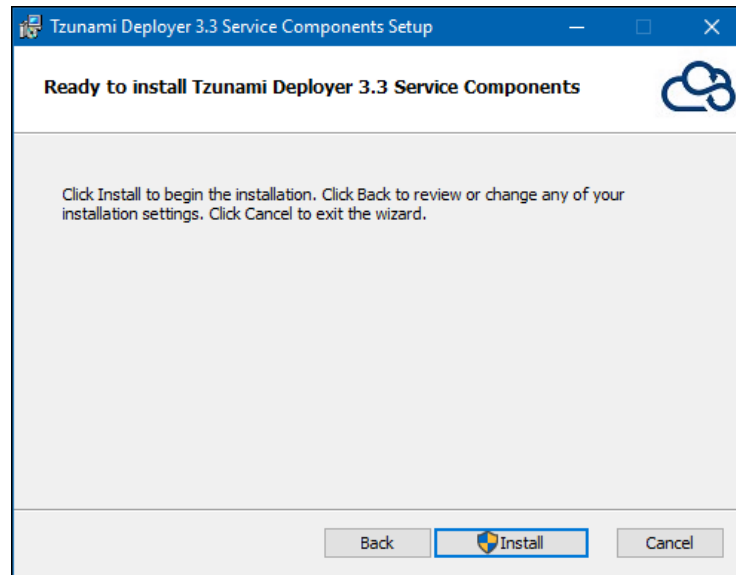


Figure 2-18: Installing Tzunami Deployer Link Resolver Service

5. Click **Finish** to exit from the setup wizard.

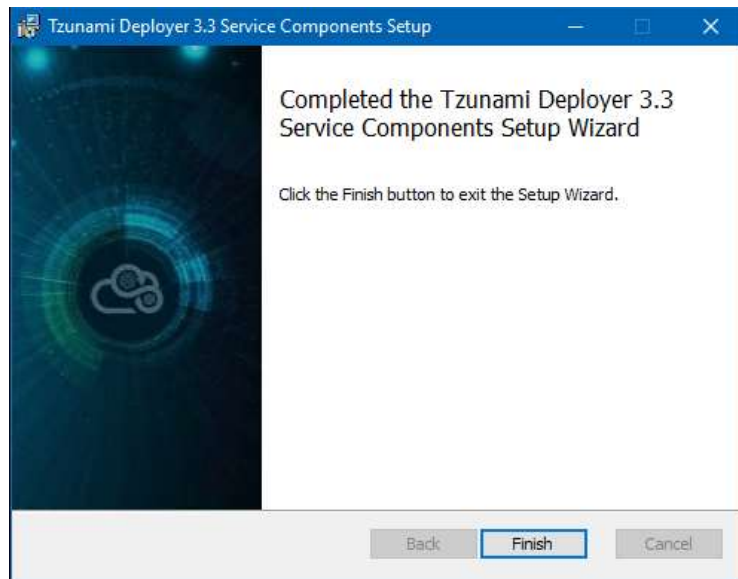


Figure 2-19: Installation Complete Window

2.2.3.2 Configuring Tsunami Link Resolver Service to communicate with Tsunami Remote Service

You should configure Tsunami Deployer Remote Service to communicate with Tsunami Link Resolver Service prior to starting commit to SharePoint Servers.

To configure Tsunami Deployer Remote Service

1. Click **Start > All Programs > Tsunami > Deployer 3.3 Remote Service > RS Configuration Tool**.
2. In **Link Resolver Service Address**, enter the Name or IP address of the machine where Tsunami Link Resolver Service is installed (**Figure 2-12**).
3. Click **OK** to Save.

2.2.3.3 Configuring Tsunami Link Resolver Service to communicate with Tsunami Deployer

You must configure Tsunami Deployer to communicate with Tsunami Link Resolver Service prior to starting commit to SharePoint Server 2010, SharePoint Server 2013, SharePoint Server 2016 and SharePoint Server 2019 (without using Remote Service).

To configure Tsunami Deployer

1. Click **Start > All Programs > Tsunami > Settings Manager 3.3**.
2. In **Link Resolver Service Address**, enter the Name or IP address of the machine where Tsunami Link Resolver Service is installed.

Figure 2-20: Deployer Settings Window

Table 2-2: Deployer Settings

Field/Item	Description
Address	
Licensing Service	Enter the Server Name or IP address of the machine where the Tsunami Licensing Service is installed. For more information, see <i>Tsunami Licensing Service Guide</i> .
Link Resolver Service	Enter the Server Name or IP address of the machine where Tsunami Link Resolver Service is installed.
Licensing Service	
Receive Timeout	Specify the duration that Tsunami Deployer waits to receive response for its request from Tsunami Licensing Service.
Send Timeout	Specify the duration that Tsunami Deployer waits for an operation to complete sent to Tsunami Licensing Service.
Link Resolver Service	
Receive Timeout	Specify the duration that Tsunami Deployer waits to receive response for its request from Link Resolver Service.
Send Timeout	Specify the duration that Tsunami Deployer waits for an operation to complete sent to Link Resolver Service.

3. Click **OK** to Save.

2.3 UNINSTALL TZUNAMI DEPLOYER AND SERVICE COMPONENTS

This section of the guide illustrates different ways to remove or uninstall Tzunami Deployer and Service Components. Here are the three different ways to uninstall Tzunami Deployer:

- Uninstallation using Installer
- Uninstallation using Control Panel
- Uninstallation using Uninstall shortcut

To uninstall Tzunami Deployer and Service Components, user needs to be a Local Administrator. Uninstalling Tzunami Deployer and Service Components is simple and easy. You can remove or uninstall it in no time. You don't need to reboot your computer once the uninstalling process is complete.



Tzunami log files, licensing information files etc. will remain after uninstalling Tzunami Deployer and Service Components. You can manually delete those files from your computer if needed. By default logs and licensing information's etc. are located at the "C:\Program Files (x86)\Tsunami\Deployer 3.3", or where Tzunami Deployer or Tzunami Deployer Service Components is installed. Tzunami Deployer Options information will be available in "C:\Users\<user>\AppData\Local\Tsunami_Inc" location. Tzunami Link Resolver data's and licensing service information are available in "C:\ProgramData\Tsunami" folder.

2.3.1 Uninstallation using Installer

To uninstall Tzunami Deployer and Tzunami Deployer Service Components using Installer

1. Close **Tzunami Deployer**.
2. Unzip the zip file, and run **TzunamiDeployerSetup.msi** or **DeployerServiceComponentsSetup.msi**. The Tzunami Deployer setup wizard (Welcome window) or Tzunami Deployer Service Components Setup wizard (Welcome window) will launch. To advance through the remove installation wizard, click "**Next**" at the bottom of the screen.
3. In the Change, repair or remove installation panel, click "**Remove**" button to proceed to remove the application from your system.
4. In the Ready to remove panel, click "**Remove**" to remove the application from your computer.
5. Click **Finish** to exit the setup wizard.



You can right-click Tzunami Deployer setup (**TzunamiDeployerSetup.msi** or **DeployerServiceComponentsSetup.msi**) file and select **Uninstall** to remove or uninstall the application from your computer.

2.3.2 Uninstallation using Control Panel

To uninstall Tzunami Deployer and Tzunami Deployer Service Components using Control Panel

1. Go to **Control Panel**.
2. Click **Programs > Programs and Features**.

3. Right-click the Tsunami Deployer 3.3 application you want to remove, and then click **Uninstall**.

2.3.3 Uninstallation using shortcuts

To uninstall Tsunami Deployer and Tsunami Deployer Service Components using Uninstall Shortcuts.

1. Go to **Start** menu.
2. Search for **Uninstall Tsunami Deployer 3.3** or **Uninstall Tsunami Deployer 3.3 Service Components**, then click.
3. Windows Installer window will prompt a message “**Are you sure you want to uninstall this product?**”
4. Click “**Yes**” to uninstall the application from your computer.

3 LICENSING INFORMATION

Tsunami Deployer Licensing Service provides project managers with the centralized point of management for the Tsunami Deployer licenses. To ensure successful migration, you must install and configure the Tsunami Deployer Licensing Service.

When committing a Tsunami Deployer project, Tsunami Deployer Licensing Service verifies current licenses to migrate source ECM contents to Target SharePoint list and libraries. For more information about installation and configuration, see [Tsunami Deployer Licensing Guide](#).

For any question regarding usage of Tsunami Licensing Service, or for updated licenses, please contact the Tsunami Support Team at support@tsunami.com.

4 COPYRIGHT AND TRADEMARK

© Copyright 2020. Tsunami Inc. All rights reserved.

All intellectual property rights in this publication are owned by Tsunami, Inc. and protected by United States copyright laws, other applicable copyright laws and international treaty provisions. Tsunami, Inc. retains all rights not expressly granted. No part of this publication may be reproduced in any form whatsoever or used to make any derivative work without prior written approval by Tsunami, Inc.

No representation of warranties for fitness for any purpose other than what is specifically stated in this guide is made either by Tsunami, Inc. or by its agents.

Tsunami, Inc. reserves the right to revise this publication, and/or make improvements or changes in the product(s) and/or the program(s) described in this documentation at any time without prior notice.

Any software on removable media described in this publication is furnished under a license agreement included with the product as a separate document. If you are unable to locate a copy, please contact Tsunami, Inc. and a copy will be forwarded to you.

Tsunami is either a registered trademark or a trademark of Tsunami, Inc. in the United States and/or other countries.

All other brand or product names are trademarks or registered trademarks of their respective companies.

For further information, you can contact Tsunami Inc. at:

Tsunami Inc.

601 108th Avenue, NE

Suite 1900

Bellevue, WA 98004, USA

Email: sales@tsunami.com, support@tsunami.com

Web: <http://www.tsunami.com>